

SOSS Undergraduate (UG) INDUCTION – EBS & PSYCHOLOGY: Tuesday, 5TH JANUARY 2021

SOSS (joint EBS & Psychology) sessions, EBS-only sessions, Psychology-only sessions

To access the induction sessions, click on the link provided below. OR go to the ‘Induction - Business Management’ Vision page (“Vision” is our virtual learning environment), then click on the ‘Live Induction Session’ tab on the left-side bar. There, you will see a full list of all Induction Sessions that you can attend.

Please note: all live sessions will be recorded, and videos will be uploaded on the Vision page afterwards. Thus, even if you cannot attend a live session, you can watch the recording later, as well as access all resources, links and information on the Induction page on Vision.

SOSS Dubai - January 2021 intake: EBS & PSYCHOLOGY (9 AM – 10 AM)			
Link: https://eu.bbcollab.com/guest/f520296b51e34f4cb7bf1f2d5ddbc30a			
8.45 – 9.00 AM	Students log-in	Dr Kirin Hilliar	Have opening slide ready, telling students that they are in the right place and we will be starting at 9am
9.00 – 9.10 AM	Welcome	Dr Kirin Hilliar	Let’s get to know each other.
9.10 – 9.35 AM	RBL	Dr Allyson Noble	Responsive Blended Learning (RBL)
9.35 – 9.45 AM	Our online learning environment: Vision	Dr Kirin Hilliar	Walk through a Vision page and how it is structured
9.45 – 9.55 AM	Where can I find...?	Dr Kirin Hilliar	Walk through the Induction Vision page and where to find everything

Break until 10am (stretch your legs, grab a cup of tea!) when separate sessions for EBS and Psychology students will take place.

SOSS Dubai - January 2021 intake: discipline-specific sessions (10 AM – 12 PM)					
New students EBS Dubai			New students PSYCHOLOGY Dubai		
Link: https://eu.bbcollab.com/guest/6413b344d66f42078ed7dc992817a2e2			Link: https://eu.bbcollab.com/guest/6744e9d5913f45fcb009f8249771f439		
10.00 – 10.40 AM	Welcome, introduction to the team, and program guidance	IBM/BBA Dr Rafal Sitko AEF Dr Esinath Ndiweni	10.00 – 10.10 AM	Welcome and meet the Psychology team	Psychology team
10.40 – 11.10 AM	Grade structure, personal tutor, lines of communication and timetable	Dr Sunita Mathur	10.10 – 10.30 AM	What will university be like? How will teaching take place?	Dr Mercedes Sheen
11.10 – 11.50 AM	Q&A	Dr Rafal Sitko Dr Sunita Mathur Dr Esinath Ndiweni Dr Marlene Muller	10.30 – 10.45 AM	Program structure, course registration and progression rules	Dr Minu Mathews
			10.45 - 10.55 AM	Understanding your timetable	Dr Kirin Hilliar
			10.55 – 11.00 AM	Role of Personal Tutor	Dr Cakil Agnew
			11.00 – 11.10 AM	Lines of communication and communication etiquette	Dr Minu Mathews
			11.10 – 11.50 AM	Q&A	Psychology team

There are other sessions taking place throughout the week you may wish to join if you are available regarding Clubs and Societies and other activities. There are also additional sessions running for Wellbeing, Library and Careers if you are unable to attend the scheduled sessions.

Date	Time	Activity/Session	Meeting Link
Monday 4th	5:30pm	Professional Services Overview	Click here to join the meeting
	6:15pm	Library Services	Click here to join the meeting
Tuesday 5th	1-3pm	Student Council introduction to clubs	Microsoft Teams Link
	3pm	Library Services	Click here to join the meeting
	6pm	Student Council	Microsoft Teams Link
Wednesday 6th	12pm	Professional Services Overview	Microsoft Teams Link
	1pm	Welcome to Careers	Click here to join the meeting
	2pm	Introduction to Wellbeing	Click here to join the meeting
	2:30pm	Library Services	Click Here to Join the meeting
	3pm	Introduction to Responsive Blended Learning	Click here to join the meeting (VISION)
	5:30pm	Introduction to Wellbeing	Click here to join the meeting
	6pm	Welcome to Careers	Click here to join the meeting
Thursday 7th	2pm	Student Council Scavenger hunt	http://www.instagram.com/hwudcouncil

The information above provides the programme schedule, including other details of the various events and student activities held during the Welcome Week(s).

All sessions will be delivered through either Microsoft Teams (MS Teams) or Vision (VLE).

Please check [VISION](#)* regularly for the latest and most updated schedule. *VISION is the University Virtual Learning Environment (VLE), which is a web-based platform for the digital aspects of courses of study and Induction.

The programme published here is based on the best available information at the time of printing and is subject to changes. Therefore, please ensure you check back regularly to see any updates.



For assistance, please contact log into your student portal and log an enquiry through [“ask HWU”](#) for the fastest response. Alternatively, you can email dubaistudentservices@hw.ac.uk.

Interim Campus Tours

Tours of our interim campus will be taking place during Induction week from Monday 4th January – Thursday 7th January

This is an opportunity to familiarize yourself with the university’s new surroundings, identify where your lectures will be taking place and start to make you feel part of the Heriot Watt community.

We hope you can join us in one of the tours. To sign up, please follow the link below:

[Interim Campus Tour](#)

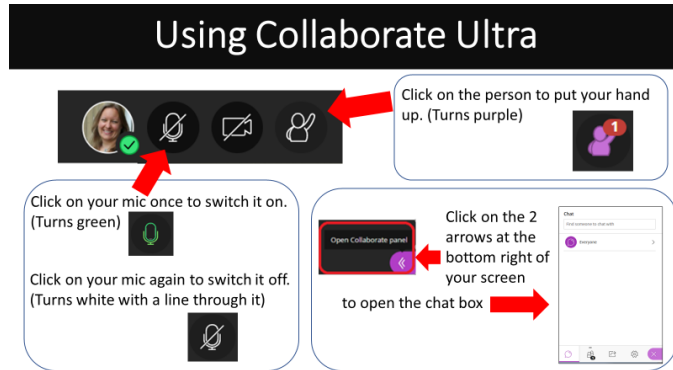
HOW TO ACCESS VISION

You can access [Vision](#) through the Vision tile on the Heriot-Watt [Student Portal](#).

Once you are logged in to Vision:

- Go to My Organisations where you will find the Induction organisation
- Click on the Induction link to take you to the Induction organisation
- Sign up to the appropriate campus group by clicking on the **Campus**
- **Groups Signup tab** on the left hand side and clicking on the appropriate campus sign up button - Dubai
- Explore the site and find out when your induction events are planned during welcome week 6th - 10th September.

Your school will be using Collaborate Ultra within the Vision site to deliver their Inductions, please see image which will show you basic instructions when in one of your induction meetings.



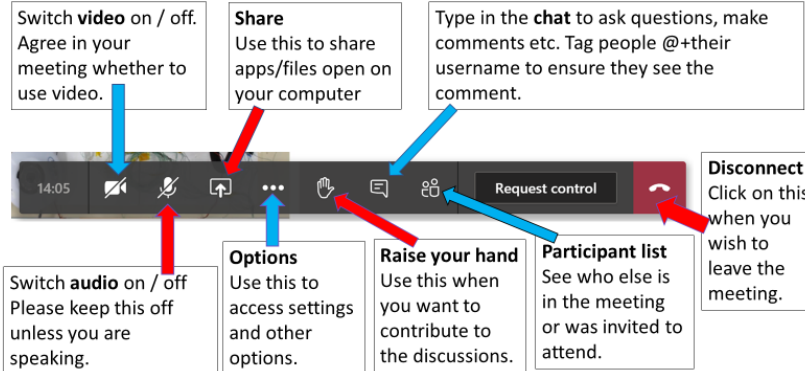
Microsoft Teams (MS Teams)

If your school is delivering their inductions through MS Teams you will need to click on the link provided in the 'How to Access' column.

This will take you straight to your programme page. Here you will be greeted by an academic from your school who will then take you through your induction.

Please see images below that will provide some basic information on how to use MS Teams.

Using Teams



Switch video on / off.
Agree in your meeting whether to use video.

Share
Use this to share apps/files open on your computer

Type in the **chat** to ask questions, make comments etc. Tag people @+their username to ensure they see the comment.

Switch audio on / off
Please keep this off unless you are speaking.

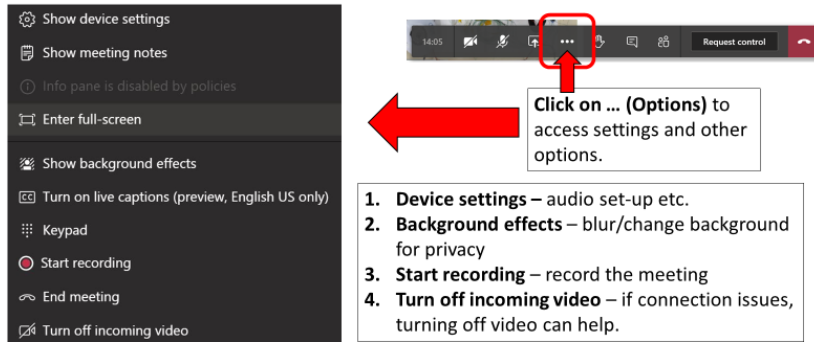
Options
Use this to access settings and other options.

Raise your hand
Use this when you want to contribute to the discussions.

Participant list
See who else is in the meeting or was invited to attend.

Disconnect
Click on this when you wish to leave the meeting.

Teams options



Show device settings
 Show meeting notes
 Info pane is disabled by policies
 Enter full-screen
 Show background effects
 Turn on live captions (preview, English US only)
 Keypad
 Start recording
 End meeting
 Turn off incoming video

Click on ... (Options) to access settings and other options.

- 1. Device settings** – audio set-up etc.
- 2. Background effects** – blur/change background for privacy
- 3. Start recording** – record the meeting
- 4. Turn off incoming video** – if connection issues, turning off video can help.

Help guide: https://download.microsoft.com/download/D/9/F/D9FE8B9E-22F5-47BF-A1AB-09539C41FCD0/Teams_QS.pdf