

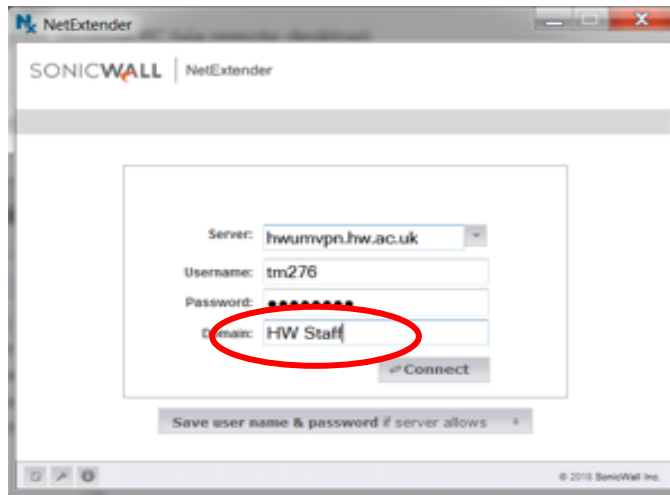
VPN User Guide: HW Managed Laptop (Malaysia)

The VPN is set up on all HWU managed laptops.

You can access the VPN from the HW VPN shortcut on the desktop.

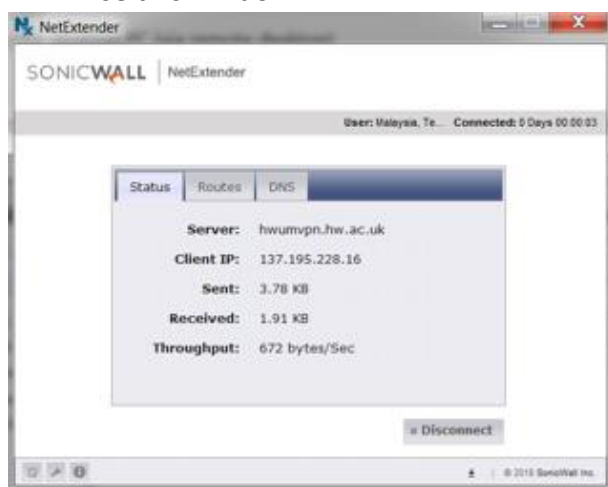
Log in to the VPN

1. **Double click** the HW VPN shortcut (Dell SonicWALL NetExtender) on your desktop
 2. Enter your **Username** and **Password**
 3. Click **Connect**
- **NOTE** – The Domain is case sensitive



The VPN will start to connect to the Server and will display the information on the right.

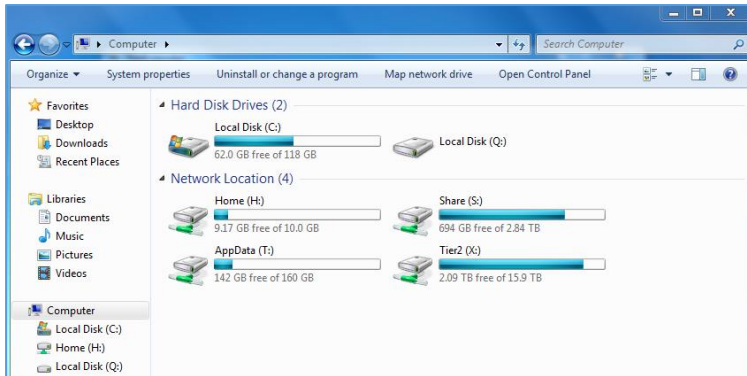
- Minimise this window



Navigate your folders

You can navigate your drives and folders from Windows Explorer.

- If any drives are marked with a red **X**, **double click** on the drive to connect and open.



Log out

When you have finished using the VPN you should disconnect.

1. **Right click** on the VPN icon in the Notification Area
2. Click **Disconnect**

