



# annual statistics 2015-2016

*[www.hw.ac.uk](http://www.hw.ac.uk)*



## Contents

	Page(s)
<b>1 PROFILE AT A GLANCE</b>	<b>3</b>
<b>2 STUDENT NUMBERS</b>	<b>5 – 21</b>
- Student numbers summary (On-campus Scotland)	5
- Undergraduate (On-campus Scotland)	6 – 8
- Postgraduate Taught Course (On-campus Scotland)	9 – 11
- Postgraduate Research (On-campus Scotland)	12 – 14
- On-campus Dubai	15 – 16
- On-campus Malaysia	17
- Undergraduate Exchange, Non-graduating and Visiting Students	18
- Student Domiciles	19 – 20
<b>3 TRANSNATIONAL DEGREE PROGRAMMES</b>	<b>21 – 22</b>
- Approved Learning Partners and Independent Distance Learning	21
- Approved Learning Partners	22
<b>4 UNDERGRADUATE STUDENT APPLICATIONS &amp; ADMISSIONS</b>	<b>23</b>
<b>5 DEGREES AWARDED</b>	<b>24 – 26</b>
- First and Higher Degrees (On-campus Scotland and International)	24 – 25
- First and Higher Degrees (On-campus Dubai and Malaysia)	26
<b>6 UNDERGRADUATE STUDENT PROGRESSION (ALL STUDENTS/FRESHERS ONLY, SCOTLAND, DUBAI AND MALAYSIA CAMPUSES)</b>	<b>27 – 31</b>
<b>7 GRADUATE FIRST DESTINATIONS (FIRST DEGREES)</b>	<b>32 – 33</b>
<b>8 NATIONAL STUDENT SURVEY RESULTS</b>	<b>34 – 35</b>
<b>9 STAFF NUMBERS</b>	<b>36</b>

**If you would like a large-print version of this document please contact the Secretariat, Tel: 0131 451 3365.**

## Notes

This report is published annually. Suggestions for future enhancements are welcome. Please direct any comments or enquiries to the Secretariat:

Lorna Kirkwood-Smith, Tel: 0131 451 3631, Email: [L.A.Kirkwood-Smith@hw.ac.uk](mailto:L.A.Kirkwood-Smith@hw.ac.uk) or  
Lisa Herlihy, Tel: 0131 451 3738, Email: [L.Herlihy@hw.ac.uk](mailto:L.Herlihy@hw.ac.uk)

Student numbers information is extracted from a 'snap-shot' of the student database at a census date in early December each year.

The report is available on the staff section of the University's web home page at <https://www.hw.ac.uk/documents/annual-statistics.pdf> and is included in the University's Freedom of Information Publication Scheme at: <https://www.hw.ac.uk/about/policies/foi.htm>

More detailed reporting may be available from contributing sections. Contact details are provided below.

October 2016

## CONTACTS

### **Academic Registry and Student Services:**

*Jean Campbell, Management Information Analyst, Ext: 3383, Email: [J.M.Campbell@hw.ac.uk](mailto:J.M.Campbell@hw.ac.uk)*

*Nick Thow, Director, Careers Advisory Service, Ext: 3392, Email: [N.W.Thow@hw.ac.uk](mailto:N.W.Thow@hw.ac.uk) (First Destination data)*

### **Secretariat:**

*Lorna Kirkwood-Smith, Head, Ext: 3631, Email: [L.A.Kirkwood-Smith@hw.ac.uk](mailto:L.A.Kirkwood-Smith@hw.ac.uk)*

*Lisa Herlihy, Assistant to the Secretariat, Ext: 3738, Email: [L.Herlihy@hw.ac.uk](mailto:L.Herlihy@hw.ac.uk)*

### **Student Recruitment:**

*Michael Bates, Director, Ext: 3450, Email: [M.Bates@hw.ac.uk](mailto:M.Bates@hw.ac.uk) (Recruitment and Admissions data)*

### **Edinburgh Business School:**

*Adrian Carberry, Administration Manager, Ext: 3938, Email: [A.Carberry@hw.ac.uk](mailto:A.Carberry@hw.ac.uk)*



## HERIOT-WATT UNIVERSITY: PROFILE AT A GLANCE

**Founded:** 1821. Granted university status by Royal Charter in 1966.

**Campus Locations:** Edinburgh, Galashiels, Orkney, Dubai, Malaysia

The University's main Edinburgh campus comprises 380 acres of parkland and incorporates the Edinburgh Research Park established in 1971 as the first science park of its kind in the UK. Around 40 companies are currently based on the Research Park. The University's Scottish Borders Campus at Netherdale in Galashiels is home to the School of Textiles and Design. The Campus is shared with Scottish Borders College.

The University's International Centre for Island Technology based in Stromness, Orkney Islands (Orkney Campus), is part of the University's School of Energy, Geoscience, Infrastructure, and Society. The Centre concentrates on renewable energy, particularly marine energy.

In 2011 Heriot-Watt University won a major international tender to establish a new purpose-built University Campus in Putrajaya, Malaysia. The Heriot-Watt Malaysia Campus will create opportunities for up to 4,000 undergraduate and postgraduate students to study degree-level programmes in science, business, engineering, mathematics and design. Student numbers have been growing rapidly since the first student enrolments early in 2013. The new campus building was formally opened in autumn 2014.

### Student population:

#### On-campus (Edinburgh, Orkney):-

- 6,091 undergraduate (including exchange and visiting students)
- 1,385 postgraduate taught course
- 826 postgraduate research

#### On-campus (Scottish Borders Campus)

- 550 undergraduate (including exchange and visiting students)
- 17 postgraduate taught course
- 18 postgraduate research

#### On-campus (Dubai)

- 2,468 undergraduate
- 1,1226 postgraduate taught course
- 6 postgraduate research

#### On-campus (Malaysia)

- 724 undergraduate
- 194 postgraduate taught course

One-third of the University's on-campus students studying in Scotland are from outside of the UK, making Heriot-Watt one of the most internationally diversified of any UK universities.

**Transnational programmes** (independent study in 150 countries worldwide or through a network of 53 Approved Learning Partners (ALPs) and collaborative partners. In HESA reporting year ending 31 July 2015 there were:

- 7,650 active matriculated ALP students
- 4,783 active matriculated independent (distance learning) students
- Including all active students (registered or not yet registered for full degree programmes) a population of more than 18,000 transnational programme students.

### Staff population: Total: 2,141 (headcount) of which:-

#### On-campus (Scottish Campuses):-

- 556 academic staff
- 235 research staff
- 1,151 staff in all other categories

#### On-campus (Dubai Campus):-

- 71 academic
- 20 staff in all other categories

#### On-campus (Malaysia Campus):-

- 67 academic staff
- 95 staff in all other categories



**STUDENT NUMBERS (ON-CAMPUS IN SCOTLAND): 2013/14 - 2015/16**

**UNDERGRADUATE students by attendance level and gender**

	2015/16					2014/15					2013/14						
	ft	pt	Total	%	% change yr/yr	ft	pt	Total	%	% change yr/yr	ft	pt	Total	%	% change yr/yr		
<b>Total</b>	<b>6,526</b>	<b>99</b>	<b>6,625</b>	<b>100</b>	<b>2</b>	<b>Total</b>	<b>6,420</b>	<b>83</b>	<b>6,503</b>	<b>100</b>	<b>4</b>	<b>Total</b>	<b>6,179</b>	<b>94</b>	<b>6,273</b>	<b>100</b>	<b>8</b>
Female	2,832	26	2,858	43	0	Female	2,826	28	2,854	44	4	Female	2,706	32	2,738	44	10
Male	3,694	73	3,767	57	3	Male	3,594	55	3,649	56	3	Male	3,473	62	3,535	56	7

Includes home students on a year abroad or on placement as part of their studies.

Excludes registered incoming exchange, non-graduating and visiting students. These are detailed on page 18.

**POSTGRADUATE TAUGHT COURSE students by attendance level and gender**

	2015/16					2014/15					2013/14						
	ft	pt	Total	%	% change yr/yr	ft	pt	Total	%	% change yr/yr	ft	pt	Total	%	% change yr/yr		
<b>Total</b>	<b>1,283</b>	<b>119</b>	<b>1,402</b>	<b>100</b>	<b>-1</b>	<b>Total</b>	<b>1,305</b>	<b>110</b>	<b>1,415</b>	<b>100</b>	<b>2</b>	<b>Total</b>	<b>1,288</b>	<b>94</b>	<b>1,382</b>	<b>100</b>	<b>-3</b>
Female	508	55	563	40	-2	Female	523	52	575	41	7	Female	498	40	538	39	-6
Male	775	64	839	60	0	Male	782	58	840	59	0	Male	790	54	844	61	-1

Excludes staff registrations for the Postgraduate Certificate in Academic Practice.

Excludes very small numbers of registered incoming exchange, non-graduating and other visiting students.

**POSTGRADUATE RESEARCH students by attendance level and gender**

	2015/16					2014/15					2013/14						
	ft	pt	Total	%	% change yr/yr	ft	pt	Total	%	% change yr/yr	ft	pt	Total	%	% change yr/yr		
<b>Total</b>	<b>776</b>	<b>68</b>	<b>844</b>	<b>100</b>	<b>14</b>	<b>Total</b>	<b>677</b>	<b>66</b>	<b>743</b>	<b>100</b>	<b>3</b>	<b>Total</b>	<b>663</b>	<b>61</b>	<b>724</b>	<b>100</b>	<b>10</b>
Female	259	21	280	33	19	Female	213	22	235	32	4	Female	205	21	226	31	18
Male	517	47	564	67	11	Male	464	44	508	68	2	Male	458	40	498	69	6

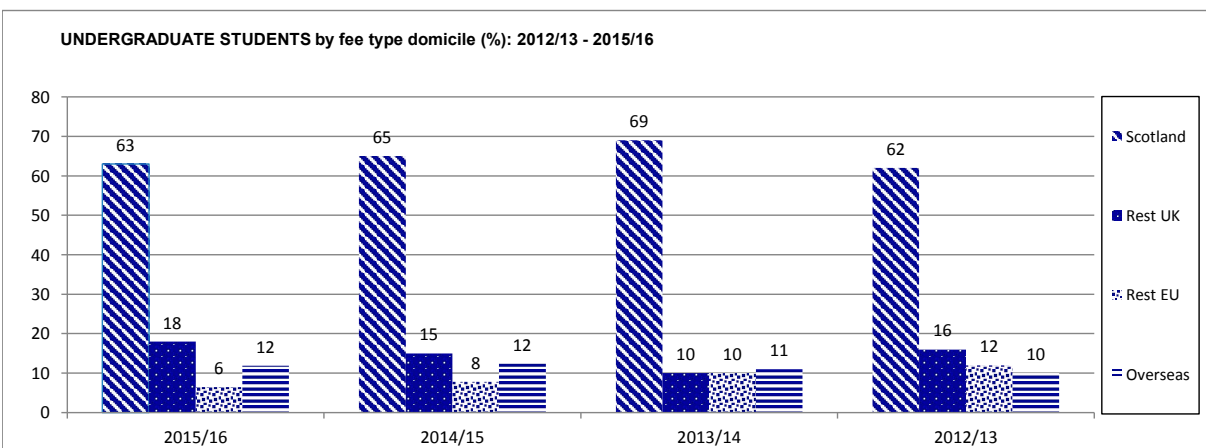
Excludes small numbers of active registered students recorded as "writing up".

Excludes small numbers of registered incoming exchange, non-graduating and visiting scholars.

**ALL STUDENTS by fees status (Scotland, Rest of UK, other EU, overseas)**

	2015/16					2014/15					2013/14						
	UG	PGT	PGR	Total	% change yr/yr	UG	PGT	PGR	Total	% change yr/yr	UG	PGT	PGR	Total	% change yr/yr		
<b>Total</b>	<b>6,625</b>	<b>1,387</b>	<b>844</b>	<b>8,856</b>	<b>2</b>	<b>Total</b>	<b>6,503</b>	<b>1,415</b>	<b>743</b>	<b>8,661</b>	<b>3</b>	<b>Total</b>	<b>6,273</b>	<b>1,382</b>	<b>724</b>	<b>8,379</b>	<b>6</b>
SCO	4,064	237	159	4,460	2	SCO	4,011	209	165	4,385	-9	SCO	4,319	252	225	4,796	20
RUK	1,346	65	91	1,502	16	RUK	1,180	56	57	1,293	97	RUK	602	51	5	658	-37
EU	430	340	211	981	-4	EU	507	342	173	1,022	-9	EU	623	357	143	1,123	0
OS	785	745	383	1,913	-2	OS	805	808	348	1,961	9	OS	729	722	351	1,802	5

Refer to inclusions/exclusions listed above.





**UNDERGRADUATE STUDENTS BY SCHOOL/PROGRAMME, ATTENDANCE LEVEL AND GENDER: 2013/14 - 2015/16**  
On-campus - Scotland

	2015/16				2014/15				2013/14						
	Gender	ft	pt	Total	%	Gender	ft	pt	Total	%	Gender	ft	pt	Total	%
<b>UNIVERSITY TOTAL</b>		<b>6,526</b>	<b>99</b>	<b>6,625</b>		<b>6,420</b>	<b>83</b>	<b>6,503</b>		<b>6,179</b>	<b>94</b>	<b>6,273</b>			
<b>ENERGY, GEOSCIENCE, INFRASTRUCTURE &amp; SOCIETY</b>		<b>798</b>	<b>7</b>	<b>805</b>	<b>27</b>	<b>752</b>	<b>6</b>	<b>758</b>	<b>26</b>	<b>699</b>	<b>30</b>	<b>729</b>	<b>27</b>		
Architectural Engineering	F	57		57	48	F	55		55	46	F	41	2	43	42
	M	62	1	63	52	M	62	2	64	54	M	54	6	60	58
<b>Total</b>		<b>119</b>	<b>1</b>	<b>120</b>		<b>117</b>	<b>2</b>	<b>119</b>		<b>95</b>	<b>8</b>	<b>103</b>			
Civil Engineering	F	78	1	79	19	F	72	1	73	18	F	83	2	85	22
	M	334	1	335	81	M	322	2	324	82	M	296	9	305	78
<b>Total</b>		<b>412</b>	<b>2</b>	<b>414</b>		<b>394</b>	<b>3</b>	<b>397</b>		<b>379</b>	<b>11</b>	<b>390</b>			
Construction Management & Surveying	F	20		20	14	F	16		16	12	F	20	1	21	16
	M	120	4	124	86	M	119	1	120	88	M	108	6	114	84
<b>Total</b>		<b>140</b>	<b>4</b>	<b>144</b>		<b>135</b>	<b>1</b>	<b>136</b>		<b>128</b>	<b>7</b>	<b>135</b>			
Urban Studies	F	60		60	47	F	51		51	48	F	45	1	46	46
	M	67		67	53	M	55		55	52	M	52	3	55	54
<b>Total</b>		<b>127</b>		<b>127</b>		<b>106</b>		<b>106</b>		<b>97</b>	<b>4</b>	<b>101</b>			
<b>ENGINEERING &amp; PHYSICAL SCIENCES</b>		<b>1,612</b>	<b>45</b>	<b>1,657</b>	<b>23</b>	<b>1,571</b>	<b>26</b>	<b>1,597</b>	<b>23</b>	<b>1,582</b>	<b>25</b>	<b>1,607</b>	<b>22</b>		
Chemical Engineering	F	109		109	29	F	112		112	32	F	105		105	30
	M	264	1	265	71	M	234	3	237	68	M	245	3	248	70
<b>Total</b>		<b>373</b>	<b>1</b>	<b>374</b>		<b>346</b>	<b>3</b>	<b>349</b>		<b>350</b>	<b>3</b>	<b>353</b>			
Chemistry	F	116		116	41	F	115		115	44	F	117	1	118	46
	M	166		166	59	M	146		146	56	M	140		140	54
<b>Total</b>		<b>282</b>		<b>282</b>		<b>261</b>		<b>261</b>		<b>257</b>	<b>1</b>	<b>258</b>			
Combined Studies (BSc/BEng)	F	24	2	26	31	F	24	4	28	32	F	28	7	35	34
	M	50	9	59	69	M	47	13	60	68	M	57	10	67	66
<b>Total</b>		<b>74</b>	<b>11</b>	<b>85</b>		<b>71</b>	<b>17</b>	<b>88</b>		<b>85</b>	<b>17</b>	<b>102</b>			
Electrical, Electronic & Computer Engineering	F	19	2	21	9	F	20		20	9	F	19	1	20	9
	M	195	30	225	91	M	207	2	209	91	M	196	1	197	91
<b>Total</b>		<b>214</b>	<b>32</b>	<b>246</b>		<b>227</b>	<b>2</b>	<b>229</b>		<b>215</b>	<b>2</b>	<b>217</b>			
Mechanical Engineering	F	53		53	12	F	51		51	11	F	43		43	10
	M	379		379	88	M	395	2	397	89	M	403	2	405	90
<b>Total</b>		<b>432</b>		<b>432</b>		<b>446</b>	<b>2</b>	<b>448</b>		<b>446</b>	<b>2</b>	<b>448</b>			
Physics	F	47	1	48	20	F	41		41	18	F	37		37	16
	M	190		190	80	M	179	2	181	82	M	192		192	84
<b>Total</b>		<b>237</b>	<b>1</b>	<b>238</b>		<b>220</b>	<b>2</b>	<b>222</b>		<b>229</b>		<b>229</b>			
<b>LIFE SCIENCES</b>		<b>842</b>	<b>32</b>	<b>874</b>	<b>62</b>	<b>893</b>	<b>27</b>	<b>920</b>	<b>64</b>	<b>818</b>	<b>20</b>	<b>838</b>	<b>64</b>		
Biology	F	213	11	224	51	F	242	2	244	53	F	217	10	227	53
	M	208	11	219	49	M	205	9	214	47	M	195	7	202	47
<b>Total</b>		<b>421</b>	<b>22</b>	<b>443</b>		<b>447</b>	<b>11</b>	<b>458</b>		<b>412</b>	<b>17</b>	<b>429</b>			
Applied Psychology	F	316	4	320	74	F	328	14	342	74	F	303	1	304	77
	M	105	6	111	26	M	117	2	119	26	M	88	2	90	23
<b>Total</b>		<b>421</b>	<b>10</b>	<b>431</b>		<b>445</b>	<b>16</b>	<b>461</b>		<b>391</b>	<b>3</b>	<b>394</b>			
Sport & Exercise Science	F					F	1		1	100	F	8		8	53
	M					M					M	7		7	47
<b>Total</b>						<b>1</b>		<b>1</b>			<b>15</b>		<b>15</b>		
<b>MANAGEMENT &amp; LANGUAGES</b>		<b>1,745</b>	<b>10</b>	<b>1,755</b>	<b>51</b>	<b>1,692</b>	<b>18</b>	<b>1,710</b>	<b>50</b>	<b>1,636</b>	<b>12</b>	<b>1,648</b>	<b>50</b>		
Accountancy & Finance	F	206	1	207	45	F	189	2	191	43	F	168	1	169	42
	M	248	2	250	55	M	248	4	252	57	M	229	1	230	58
<b>Total</b>		<b>454</b>	<b>3</b>	<b>457</b>		<b>437</b>	<b>6</b>	<b>443</b>		<b>397</b>	<b>2</b>	<b>399</b>			
Combined Studies (BA)	F	10		10	29	F	15		15	38	F	12		12	41
	M	23	2	25	62	M	22	3	25	62	M	15	2	17	59
<b>Total</b>		<b>33</b>	<b>2</b>	<b>35</b>		<b>37</b>	<b>3</b>	<b>40</b>		<b>27</b>	<b>2</b>	<b>29</b>			
Economics	F	70		70	29	F	65		65	27	F	73		73	28
	M	174		174	71	M	173	1	174	73	M	185	2	187	72
<b>Total</b>		<b>244</b>		<b>244</b>		<b>238</b>	<b>1</b>	<b>239</b>		<b>258</b>	<b>2</b>	<b>260</b>			
Languages	F	307	2	309	80	F	296	3	299	79	F	291	2	293	78
	M	76	1	77	20	M	78		78	21	M	82	1	83	22
<b>Total</b>		<b>383</b>	<b>3</b>	<b>386</b>		<b>374</b>	<b>3</b>	<b>377</b>		<b>373</b>	<b>3</b>	<b>376</b>			
Management	F	286		286	47	F	261		261	46	F	250	1	251	48
	M	324	2	326	53	M	304	5	309	54	M	272	2	274	52
<b>Total</b>		<b>610</b>	<b>2</b>	<b>612</b>		<b>565</b>	<b>5</b>	<b>570</b>		<b>522</b>	<b>3</b>	<b>525</b>			
Management (Scottish Borders Campus)	F	5		5	56	F	12		12	55	F	21		21	50
	M	4		4	44	M	10		10	45	M	21		21	50
<b>Total</b>		<b>9</b>		<b>9</b>		<b>22</b>		<b>22</b>		<b>42</b>		<b>42</b>			
Foundation English/Interpreting Studies	F	5		5	42	F	10		10	53	F	10		10	59
	M	7		7	58	M	9		9	47	M	7		7	41
<b>Total</b>		<b>12</b>		<b>12</b>		<b>19</b>		<b>19</b>		<b>17</b>		<b>17</b>			
<b>MATHEMATICAL &amp; COMPUTER SCIENCES</b>		<b>997</b>	<b>4</b>	<b>1,001</b>	<b>33</b>	<b>945</b>	<b>3</b>	<b>948</b>	<b>33</b>	<b>883</b>	<b>6</b>	<b>889</b>	<b>33</b>		
Actuarial Mathematics & Statistics	F	152		152	43	F	142		142	41	F	123		123	37
	M	201		201	57	M	203	1	204	59	M	205	2	207	63
<b>Total</b>		<b>353</b>		<b>353</b>		<b>345</b>	<b>1</b>	<b>346</b>		<b>328</b>	<b>2</b>	<b>330</b>			
Computer Science	F	20	1	21	8	F	23		23	9	F	28		28	11
	M	251	2	253	92	M	234	2	236	91	M	222		222	89
<b>Total</b>		<b>271</b>	<b>3</b>	<b>274</b>		<b>257</b>	<b>2</b>	<b>259</b>		<b>250</b>		<b>250</b>			
Mathematics	F	154		154	41	F	149		149	43	F	141	1	142	46
	M	219	1	220	59	M	194		194	57	M	164	3	167	54
<b>Total</b>		<b>373</b>	<b>1</b>	<b>374</b>		<b>343</b>		<b>343</b>		<b>305</b>	<b>4</b>	<b>309</b>			
<b>TEXTILES &amp; DESIGN</b>		<b>532</b>	<b>1</b>	<b>533</b>	<b>95</b>	<b>567</b>	<b>3</b>	<b>570</b>	<b>94</b>	<b>561</b>	<b>1</b>	<b>562</b>	<b>93</b>		
Combined Studies	F	5		5	100	F	5		5	100	F	5	1	6	100
	M					M					M				
<b>Total</b>		<b>5</b>		<b>5</b>		<b>5</b>		<b>5</b>		<b>5</b>	<b>1</b>	<b>6</b>			
Textiles & Design	F	500	1	501	95	F	531	2	533	94	F	518		518	93
	M	27		27	5	M	31	1	32	6	M	38		38	7
<b>Total</b>		<b>527</b>	<b>1</b>	<b>528</b>		<b>562</b>	<b>3</b>	<b>565</b>		<b>556</b>		<b>556</b>			

Percentage totals for Schools relate to the female population.  
Note inclusions/exclusions detailed on page 5.



UNDERGRADUATE STUDENTS BY SCHOOL/PROGRAMME AND FEE TYPE (Scottish, Rest of UK, EU, Overseas): 2013/14 - 2015/16  
On-campus - Scotland

SCHOOL/Programme	2015/16												2014/15												2013/14														
	SCO			RUK			EU			OS			SCO			RUK			EU			OS			SCO			RUK			EU			OS					
	ft	pt	Tot	ft	pt	Tot	ft	pt	Tot	ft	pt	Tot	ft	pt	Tot	ft	pt	Tot	ft	pt	Tot	ft	pt	Tot	ft	pt	Tot	ft	pt	Tot	ft	pt	Tot	ft	pt	Tot			
<b>SCHOOL/PROGRAMME</b>																																							
<b>UNIVERSITY TOTAL</b>	4,043	147	4,190	1,210	10	1,220	421	9	430	783	2	785	6,625	4,162	61	4,223	964	7	971	497	10	507	797	5	802	6,503	4,249	70	4,319	599	3	602	610	13	623	721	8	729	6,273
<b>ENERGY, GEOSCIENCE, INFRASTRUCTURE &amp; SOCIETY</b>	567	4	571	96	3	99	76	6	76	59	2	59	805	547	6	553	71	7	71	75	19	75	59	59	788	535	22	557	38	1	39	74	5	79	52	2	54	729	
Architectural Engineering	70	1	71	12	1	13	18	1	18	19	1	19	120	67	2	69	13	13	19	19	18	18	18	119	52	5	57	8	1	9	20	20	15	2	17	103			
Civil Engineering	292	1	293	65	1	66	28	27	27	27	27	414	283	3	286	48	31	48	48	31	32	32	397	287	8	295	25	2	27	37	3	40	30	40	30	30	390		
Construction Management & Surveying	111	3	114	11	1	12	10	8	8	8	8	144	109	1	110	8	8	12	12	6	6	6	136	113	5	118	2	2	10	2	12	3	4	3	4	135			
Urban Studies	94		94	8		8	20	5	20	5	5	127	88		88	2	2	13	13	3	3	3	106	83	4	87	3	3	7	4	4	4	4	4	101				
<b>ENGINEERING &amp; PHYSICAL SCIENCES</b>	1,066	106	1,172	248	1	249	106	7	113	123	123	1,657	1,085	22	1,107	219	2	221	125	2	127	142	142	1,597	1,151	20	1,171	128	1	129	154	4	158	149	4	149	1,607		
Chemical Engineering	227	1	228	86	17	103	17	17	43	43	43	374	235	3	238	50	50	19	19	42	42	42	349	249	3	252	26	26	21	21	54	54	54	54	363				
Chemistry	162		162	90		90	26	4	26	4	4	282	153		153	76	76	28	28	4	4	4	281	166		166	52	52	37	37	2	2	2	2	288				
Combined Studies (BSc/BEng)	40	8	48	18	1	19	6	2	8	10	10	85	41	13	54	11	2	13	8	2	10	11	11	88	57	13	70	6	1	7	13	3	16	9	102				
Electrical, Electronic & Computer Engineering	166	27	193	16	1	17	18	5	23	14	14	246	161	2	163	9	9	30	27	27	27	229	153	1	154	6	6	29	1	30	27	27	27	217					
Mechanical Engineering	291	69	360	16	23	39	23	49	49	49	49	432	321	2	323	44	44	27	27	54	54	448	340	2	342	22	22	30	30	54	54	54	54	448					
Physics	180	1	181	38	3	41	16	3	19	3	3	238	174	2	176	29	29	13	13	4	4	222	186	16	202	16	16	24	24	3	3	3	3	229					
<b>LIFE SCIENCES</b>	579	25	604	181	5	186	29	2	31	53	53	874	640	20	660	143	4	147	54	3	57	56	56	920	600	15	615	94	1	95	72	4	76	52	4	52	838		
Biology	281	17	298	100	4	104	13	1	14	27	27	443	318	10	328	67	1	68	31	31	31	31	468	306	13	319	35	1	36	41	3	44	30	30	429				
Applied Psychology	298	8	306	81	1	82	16	1	17	26	26	431	321	10	331	76	3	79	23	3	26	25	25	461	279	2	281	59	59	31	1	32	22	22	394				
Sport & Exercise Science	1		1			1			1		1	1	1		1		1		1		1	1	1	1	1	15		15		15		15		15		15			
<b>MANAGEMENT &amp; LANGUAGES</b>	916	8	924	402	402	402	112	112	112	315	2	317	1,755	956	9	965	300	1	301	135	3	138	301	5	306	1,710	987	8	995	203	203	176	268	4	272	1,648			
Accountancy & Finance	231	2	233	70	70	70	23	130	1	131	131	457	247	3	250	42	42	23	1	24	125	2	127	443	253	253	23	23	33	33	33	33	88	2	90	399			
Combined Studies (BA)	17	2	19	6	1	7	1	9	9	9	9	35	21	2	23	2	2	2	1	3	12	12	12	40	13	2	15	6	6	6	6	8	8	8	8	29			
Economics	90		90	102		102	17	35	35	35	35	244	93	93	76	76	24	24	45	1	46	46	239	119	1	120	60	60	29	29	50	1	51	260					
Languages	244	3	247	82	82	82	53	4	57	4	4	386	252	2	254	59	1	60	61	2	2	2	377	266	3	269	42	42	64	64	1	1	1	1	376				
Management	325	1	326	142	142	142	18	125	1	126	126	612	323	2	325	121	121	24	1	25	97	2	99	570	297	2	299	78	78	44	44	103	1	104	525				
Management (Scottish Borders Campus)	9		9			9			9		9	9	20	20	20	20	1	1	1	1	1	1	22	39	2	41	39	39	2	2	2	2	1	1	42				
Foundation English/Interpreting Studies												12	12	12	12	12	12	12	12	12	12	12	19	19	19	19	19	19	19	19	19	19	19	19	19	19	17		
<b>MATHEMATICAL &amp; COMPUTER SCIENCES</b>	500	3	503	228	1	229	56	213	56	213	213	1,001	499	2	501	179	56	1	57	211	211	211	948	537	4	541	102	102	62	62	182	2	184	869					
Actuarial Mathematics & Statistics	117		117	63		63	17	156	156	156	156	353	118	1	119	61	61	14	14	14	152	152	346	140	140	39	39	11	11	138	2	140	330						
Computer Science	213	3	216	20	20	20	20	18	18	18	274	195	1	196	13	13	26	1	27	23	23	23	269	196	196	186	6	6	33	33	15	15	15	15	280				
Mathematics	170		170	145		145	19	39	39	39	374	186	186	105	105	16	16	36	36	36	36	343	201	4	205	57	57	18	18	29	29	29	29	309					
<b>TEXTILES &amp; DESIGN</b>	415	1	416	55	55	55	42	42	42	20	20	533	435	2	437	52	52	52	52	52	52	28	570	439	1	440	34	34	70	70	18	18	18	18	562				
Combined Studies	1	1	2	3	3	3	3	3	3	3	3	5	2	2	2	2	2	2	2	2	2	5	5	5	5	5	5	5	5	5	5	5	5	5	5	6			
Textiles & Design	414	1	415	52	52	52	42	42	42	19	19	528	433	2	435	51	51	51	51	51	51	27	565	436	1	437	34	34	68	68	18	18	18	18	556				

Note inclusions/exclusions detailed on page 5.

**UNDERGRADUATE FRESHER STUDENTS BY GENDER: 2013/14 - 2015/16**  
On-campus - Scotland

	2015/16		2014/15		2013/14				
	Gender	%	Gender	%	Gender	%			
<b>UNIVERSITY TOTAL</b>		<b>1,827</b>	<b>43</b>		<b>1,799</b>	<b>43</b>		<b>2,131</b>	<b>45</b>
<b>ENERGY, GEOSCIENCE, INFRASTRUCTURE &amp; SOCIETY</b>		<b>226</b>	<b>25</b>		<b>248</b>	<b>22</b>		<b>196</b>	<b>27</b>
Architectural Engineering	F	10	37	F	14	42	F	18	53
	M	17	63	M	19	58	M	16	47
<b>Total</b>		<b>27</b>			<b>33</b>			<b>34</b>	
Civil Engineering	F	19	18	F	17	13	F	18	17
	M	87	82	M	114	87	M	87	83
<b>Total</b>		<b>106</b>			<b>131</b>			<b>105</b>	
Construction Management & Surveying	F	4	10	F	4	9	F	5	14
	M	37	90	M	43	91	M	30	86
<b>Total</b>		<b>41</b>			<b>47</b>			<b>35</b>	
Urban Studies	F	23	44	F	19	51	F	12	55
	M	29	56	M	18	49	M	10	45
<b>Total</b>		<b>52</b>			<b>37</b>			<b>22</b>	
<b>ENGINEERING &amp; PHYSICAL SCIENCES</b>		<b>420</b>	<b>20</b>		<b>393</b>	<b>23</b>		<b>491</b>	<b>24</b>
Chemical Engineering	F	19	20	F	25	30	F	32	30
	M	77	80	M	59	70	M	76	70
<b>Total</b>		<b>96</b>			<b>84</b>			<b>108</b>	
Chemistry	F	29	36	F	30	41	F	37	41
	M	51	64	M	43	59	M	53	59
<b>Total</b>		<b>80</b>			<b>73</b>			<b>90</b>	
Combined Studies (BSc/BEng)	F	4	22	F	9	37	F	13	43
	M	14	78	M	15	63	M	17	57
<b>Total</b>		<b>18</b>			<b>24</b>			<b>30</b>	
Electrical, Electronic & Computer Engineering	F	1	2	F	3	6	F	12	18
	M	65	98	M	51	94	M	56	82
<b>Total</b>		<b>66</b>			<b>54</b>			<b>68</b>	
Mechanical Engineering	F	12	13	F	14	15	F	11	11
	M	78	87	M	77	85	M	93	89
<b>Total</b>		<b>90</b>			<b>91</b>			<b>104</b>	
Physics	F	18	26	F	11	16	F	14	15
	M	52	74	M	56	84	M	77	85
<b>Total</b>		<b>70</b>			<b>67</b>			<b>91</b>	
<b>LIFE SCIENCES</b>		<b>204</b>	<b>59</b>		<b>253</b>	<b>59</b>		<b>361</b>	<b>61</b>
Biology	F	47	44	F	58	49	F	83	48
	M	61	56	M	60	51	M	91	52
<b>Total</b>		<b>108</b>			<b>118</b>			<b>174</b>	
Applied Psychology	F	74	77	F	91	67	F	137	73
	M	22	23	M	44	33	M	50	27
<b>Total</b>		<b>96</b>			<b>135</b>			<b>187</b>	
<b>MANAGEMENT &amp; LANGUAGES</b>		<b>517</b>	<b>51</b>		<b>420</b>	<b>50</b>		<b>585</b>	<b>51</b>
Accountancy & Finance	F	58	43	F	59	46	F	70	51
	M	77	57	M	69	54	M	66	49
<b>Total</b>		<b>135</b>			<b>128</b>			<b>136</b>	
Combined Studies (BA)	F			F			F		
	M			M			M	1	100
<b>Total</b>								<b>1</b>	
Economics	F	26	34	F	8	21	F	23	28
	M	51	66	M	31	79	M	60	72
<b>Total</b>		<b>77</b>			<b>39</b>			<b>83</b>	
Languages	F	80	78	F	70	80	F	101	77
	M	23	22	M	18	20	M	31	23
<b>Total</b>		<b>103</b>			<b>88</b>			<b>132</b>	
Management	F	96	51	F	64	43	F	87	44
	M	94	49	M	84	57	M	113	57
<b>Total</b>		<b>190</b>			<b>148</b>			<b>200</b>	
Management (Scottish Borders Campus)	F			F			F	8	50
	M			M			M	8	50
<b>Total</b>								<b>16</b>	
Foundation English/Interpreting Studies	F	5	42	F	10	59	F	10	59
	M	7	58	M	7	41	M	7	41
<b>Total</b>		<b>12</b>			<b>17</b>			<b>17</b>	
<b>MATHEMATICAL &amp; COMPUTER SCIENCES</b>		<b>293</b>	<b>34</b>		<b>315</b>	<b>32</b>		<b>317</b>	<b>34</b>
Actuarial Mathematics & Statistics	F	52	47	F	55	43	F	52	41
	M	58	53	M	74	57	M	74	59
<b>Total</b>		<b>110</b>			<b>129</b>			<b>126</b>	
Computer Science	F	8	10	F	5	7	F	9	10
	M	70	90	M	70	93	M	83	90
<b>Total</b>		<b>78</b>			<b>75</b>			<b>92</b>	
Mathematics	F	39	37	F	40	36	F	47	47
	M	66	63	M	71	64	M	52	53
<b>Total</b>		<b>105</b>			<b>111</b>			<b>99</b>	
<b>TEXTILES &amp; DESIGN</b>		<b>167</b>	<b>94</b>		<b>170</b>	<b>96</b>		<b>181</b>	<b>91</b>
Textiles & Design	F	157	94	F	163	96	F	165	91
	M	10	6	M	7	4	M	16	9

Percentage totals for Schools relate to the female population.  
Note inclusions/exclusions detailed on page 5.

POSTGRADUATE TAUGHT COURSE STUDENTS BY SCHOOL/PROGRAMME, ATTENDANCE LEVEL AND GENDER 2013/14 - 2015/16  
On-campus - Scotland

	2015/16				2014/15				2013/14						
	Gender	ft	pt	Total	%	Gender	ft	pt	Total	%	Gender	ft	pt	Total	%
<b>UNIVERSITY TOTAL</b>		<b>1,283</b>	<b>119</b>	<b>1,402</b>			<b>1,305</b>	<b>110</b>	<b>1,415</b>			<b>1,288</b>	<b>94</b>	<b>1,382</b>	
<b>ENERGY, GEOSCIENCE, INFRASTRUCTURE &amp; SOCIETY</b>		<b>302</b>	<b>48</b>	<b>350</b>	<b>29</b>		<b>311</b>	<b>34</b>	<b>345</b>	<b>29</b>		<b>408</b>	<b>26</b>	<b>434</b>	<b>27</b>
Architectural Engineering	F	6	3	9	64	F	4	2	6	33	F	10	1	11	39
	M	5		5	36	M	9	3	12	67	M	15	2	17	61
<b>Total</b>		<b>11</b>	<b>3</b>	<b>14</b>			<b>13</b>	<b>5</b>	<b>18</b>			<b>25</b>	<b>3</b>	<b>28</b>	
Civil Engineering	F	9	5	14	21	F	15	1	16	30	F	7	2	9	14
	M	46	8	54	79	M	36	2	38	70	M	54	1	55	86
<b>Total</b>		<b>55</b>	<b>13</b>	<b>68</b>			<b>51</b>	<b>3</b>	<b>54</b>			<b>61</b>	<b>3</b>	<b>64</b>	
Construction Management & Surveying	F	7	7	14	29	F	12	6	18	31	F	13	4	17	28
	M	27	7	34	71	M	34	7	41	69	M	38	5	43	72
<b>Total</b>		<b>34</b>	<b>14</b>	<b>48</b>			<b>46</b>	<b>13</b>	<b>59</b>			<b>51</b>	<b>9</b>	<b>60</b>	
Urban Studies	F	27	9	36	46	F	21	8	29	19	F	17	3	20	9
	M	33	9	42	54	M	25	4	29	19	M	27	7	34	15
<b>Total</b>		<b>60</b>	<b>18</b>	<b>78</b>			<b>46</b>	<b>12</b>	<b>58</b>			<b>44</b>	<b>10</b>	<b>54</b>	
Petroleum Engineering	F	29		29	20	F	31	1	32	21	F	59	1	60	26
	M	113		113	80	M	124		124	79	M	168		168	74
<b>Total</b>		<b>142</b>		<b>142</b>			<b>155</b>	<b>1</b>	<b>156</b>			<b>227</b>	<b>1</b>	<b>228</b>	
<b>ENGINEERING &amp; PHYSICAL SCIENCES</b>		<b>124</b>	<b>7</b>	<b>131</b>	<b>18</b>		<b>145</b>	<b>6</b>	<b>151</b>	<b>15</b>		<b>142</b>	<b>5</b>	<b>147</b>	<b>24</b>
Chemical Engineering	F	4		4	20	F	3		3	15	F	4		4	27
	M	16		16	80	M	17		17	85	M	11		11	73
<b>Total</b>		<b>20</b>		<b>20</b>			<b>20</b>		<b>20</b>			<b>15</b>		<b>15</b>	
Chemistry	F					F					F	3		3	50
	M					M					M	3		3	50
<b>Total</b>												<b>6</b>		<b>6</b>	
Electrical, Electronic & Computer Engineering	F	11		11	17	F	11		11	16	F	14		14	24
	M	50	2	52	83	M	59	59	84	84	M	44	44	76	76
<b>Total</b>		<b>61</b>	<b>2</b>	<b>63</b>			<b>70</b>	<b>70</b>	<b>70</b>			<b>58</b>		<b>58</b>	
Mechanical Engineering	F	7	1	8	19	F	6	1	7	13	F	12		12	19
	M	31	4	35	81	M	40	5	45	87	M	45	5	50	81
<b>Total</b>		<b>38</b>	<b>5</b>	<b>43</b>			<b>46</b>	<b>6</b>	<b>52</b>			<b>57</b>	<b>5</b>	<b>62</b>	
Physics	F					F	2		2	22	F	2		2	33
	M	5		5	100	M	7	7	7	78	M	4	4	4	67
<b>Total</b>		<b>5</b>		<b>5</b>			<b>9</b>	<b>9</b>	<b>9</b>			<b>6</b>		<b>6</b>	
<b>LIFE SCIENCES</b>		<b>126</b>	<b>11</b>	<b>137</b>	<b>40</b>		<b>140</b>	<b>18</b>	<b>158</b>	<b>41</b>		<b>131</b>	<b>10</b>	<b>141</b>	<b>39</b>
Biology	F	37	4	41	35	F	44	8	52	41	F	28	5	33	30
	M	72	4	76	65	M	72	3	75	59	M	75	1	76	70
<b>Total</b>		<b>109</b>	<b>8</b>	<b>117</b>			<b>116</b>	<b>11</b>	<b>127</b>			<b>103</b>	<b>6</b>	<b>109</b>	
Applied Psychology	F	12	2	14	70	F	6	6	12	39	F	19	3	22	69
	M	5	1	6	30	M	18	1	19	61	M	9	1	10	31
<b>Total</b>		<b>17</b>	<b>3</b>	<b>20</b>			<b>24</b>	<b>7</b>	<b>31</b>			<b>28</b>	<b>4</b>	<b>32</b>	
<b>MANAGEMENT &amp; LANGUAGES</b>		<b>501</b>	<b>29</b>	<b>530</b>	<b>52</b>		<b>489</b>	<b>27</b>	<b>516</b>	<b>56</b>		<b>393</b>	<b>26</b>	<b>419</b>	<b>55</b>
Accountancy & Finance	F	46	1	47	40	F	56	1	57	49	F	39	2	41	48
	M	69	1	70	60	M	60		60	51	M	44		44	52
<b>Total</b>		<b>115</b>	<b>2</b>	<b>117</b>			<b>116</b>	<b>1</b>	<b>117</b>			<b>83</b>	<b>2</b>	<b>85</b>	
Economics	F	2		2	25	F					F				
	M	6		6	75	M	2		2	100	M				
<b>Total</b>		<b>8</b>		<b>8</b>			<b>2</b>		<b>2</b>						
Languages	F	59	4	63	75	F	48	5	53	73	F	35	5	40	78
	M	18	3	21	25	M	19	1	20	27	M	10	1	11	22
<b>Total</b>		<b>77</b>	<b>7</b>	<b>84</b>			<b>67</b>	<b>6</b>	<b>73</b>			<b>45</b>	<b>6</b>	<b>51</b>	
Management	F	155	11	166	52	F	172	7	179	55	F	146	5	151	53
	M	146	9	155	48	M	132	13	145	45	M	119	13	132	47
<b>Total</b>		<b>301</b>	<b>20</b>	<b>321</b>			<b>304</b>	<b>20</b>	<b>324</b>			<b>265</b>	<b>18</b>	<b>283</b>	
<b>MATHEMATICAL &amp; COMPUTER SCIENCES</b>		<b>213</b>	<b>9</b>	<b>222</b>	<b>40</b>		<b>200</b>	<b>12</b>	<b>212</b>	<b>39</b>		<b>188</b>	<b>9</b>	<b>197</b>	<b>39</b>
Actuarial Mathematics & Statistics	F	59	1	60	52	F	58	1	59	50	F	46		46	41
	M	55		55	48	M	60		60	50	M	65	1	66	59
<b>Total</b>		<b>114</b>	<b>1</b>	<b>115</b>			<b>118</b>	<b>1</b>	<b>119</b>			<b>111</b>	<b>1</b>	<b>112</b>	
Computer Science	F	16	2	18	29	F	14	1	15	21	F	15	2	17	31
	M	41	4	45	71	M	47	9	56	79	M	32	6	38	69
<b>Total</b>		<b>57</b>	<b>6</b>	<b>63</b>			<b>61</b>	<b>10</b>	<b>71</b>			<b>47</b>	<b>8</b>	<b>55</b>	
Mathematics	F	10		10	23	F	8		8	36	F	14		14	47
	M	32	2	34	77	M	13	1	14	64	M	16		16	53
<b>Total</b>		<b>42</b>	<b>2</b>	<b>44</b>			<b>21</b>	<b>1</b>	<b>22</b>			<b>30</b>		<b>30</b>	
<b>TEXTILES &amp; DESIGN</b>		<b>15</b>	<b>2</b>	<b>17</b>	<b>82</b>		<b>12</b>	<b>1</b>	<b>13</b>	<b>77</b>		<b>14</b>		<b>14</b>	<b>93</b>
Textiles & Design	F	12	2	14	82	F	9	1	10	77	F	13		13	93
	M	3		3	18	M	3		3	23	M	1		1	7
<b>EDINBURGH BUSINESS SCHOOL</b>		<b>2</b>	<b>13</b>	<b>15</b>	<b>20</b>		<b>8</b>	<b>12</b>	<b>20</b>	<b>30</b>		<b>12</b>	<b>18</b>	<b>30</b>	<b>30</b>
Edinburgh Business School	F		3	3	20	F	3	3	6	30	F	2	7	9	30
	M	2	10	12	80	M	5	9	14	70	M	10	11	21	70

Percentage totals for Schools/Institutes relate to the female population.  
Note inclusions/exclusions detailed on page 5.

POSTGRADUATE TAUGHT COURSE STUDENTS BY SCHOOL/PGI/PROGRAMME AND FEE TYPE (Scottish, Rest of UK, EU, Overseas) 2013/14 - 2015/16  
On-campus - Scotland

SCHOOL/Programme	2015/16						2014/15						2013/14																											
	SCO	RUK	EU	OS	Full	Tot	SCO	RUK	EU	OS	Full	Tot	SCO	RUK	EU	OS	Full	Tot																						
<b>UNIVERSITY TOTAL</b>	179	66	245	61	5	66	305	36	341	739	11	750	1,402	149	63	212	50	5	55	313	30	343	793	12	805	1,415	192	60	252	47	4	51	335	22	357	714	8	722	1,382	
<b>ENERGY, GEOSCIENCE, INFRASTRUCTURE &amp; SOCIETY</b>	54	29	83	29	5	34	62	14	76	157	157	350	1,402	31	17	48	6	5	11	36	10	46	83	1	84	189	44	18	62	4	2	6	43	5	48	90	206			
Architectural Engineering	3	3	6	1	1	3	4	3	4	14	4	14	1,402	2	4	6	3	1	4	8	8	8	8	18	18	10	2	12	2	1	1	3	13	13	28	28				
Civil Engineering	15	7	22	2	3	5	19	3	22	19	19	68	1,402	13	1	14	3	2	5	15	15	20	20	54	54	14	3	17	1	1	21	21	25	25	64	64				
Construction Management & Surveying	6	11	17	3	3	6	3	9	19	19	48	48	1,402	4	9	13	1	1	8	3	11	33	34	59	59	8	8	16	1	1	10	1	11	32	32	60	60			
Urban Studies	16	8	24	7	2	9	7	8	15	30	30	78	1,402	12	3	15	2	3	5	10	6	16	22	58	58	12	5	17	2	2	4	10	3	13	20	20	54	54		
Petroleum Engineering	14	8	24	7	2	9	7	8	15	30	30	78	1,402	12	3	15	2	3	5	10	6	16	22	58	58	12	5	17	2	2	4	10	3	13	20	20	54	54		
<b>ENGINEERING &amp; PHYSICAL SCIENCES</b>	15	5	20	1	1	39	2	41	69	69	131	131	1,402	18	5	23	5	5	11	36	10	46	83	1	84	189	17	4	21	3	3	61	1	62	61	147	147			
Chemical Engineering	3	3	6	1	1	7	7	10	10	20	20	20	1,402	6	6	14	6	6	14	14	14	14	14	20	20	5	5	1	1	5	5	5	5	4	4	15	15			
Chemistry	2	1	3	3	3	14	1	15	45	45	63	63	1,402	2	2	2	19	19	19	19	19	49	49	70	70	2	2	2	2	18	18	18	18	38	38	58	58			
Electrical, Electronic & Computer Engineering	7	4	11	1	1	18	1	19	12	12	43	43	1,402	12	5	17	23	1	24	11	11	11	52	52	52	8	4	12	2	2	33	1	34	14	14	62	62			
Mechanical Engineering	3	3	6	3	3	12	2	12	2	2	5	5	1,402	4	4	4	3	3	3	3	3	2	2	9	9	2	2	2	2	2	2	2	2	2	2	2	2	6	6	
Physics	44	7	51	12	12	30	3	33	40	41	137	137	1,402	46	12	58	15	15	26	6	32	53	53	158	158	36	7	43	16	16	25	3	28	54	54	141	141			
Biology	38	5	43	11	11	27	2	29	33	34	117	117	1,402	40	7	47	14	14	19	4	23	43	43	127	127	29	3	32	13	13	18	3	21	43	43	109	109			
Applied Psychology	6	2	8	1	1	3	1	4	7	7	20	20	1,402	6	5	11	1	1	7	2	9	10	10	31	31	7	4	11	3	3	7	7	7	7	11	11	32	32		
<b>MANAGEMENT &amp; LANGUAGES</b>	43	11	54	8	8	140	15	155	310	313	530	530	1,402	24	12	36	5	5	136	9	145	324	6	330	330	26	14	40	3	3	120	9	129	244	3	247	247	419	419	
Accountancy & Finance	10	1	11	2	2	21	21	82	1	83	117	117	1,402	3	3	3	22	22	22	22	91	91	92	117	117	7	1	8	8	22	1	23	54	54	85	85				
Economics	1	1	2	2	2	7	7	7	7	7	8	8	1,402	2	2	2	2	2	2	2	2	2	2	2	2	2	2	2	2	2	2	2	2	2	2	2	2	2	2	
Languages	9	1	10	4	4	32	5	37	32	33	84	84	1,402	9	1	10	3	3	28	3	31	27	29	73	73	3	3	6	2	2	19	2	21	21	21	21	22	22	51	51
Management	23	9	32	2	2	87	10	97	189	190	321	321	1,402	12	11	23	2	2	86	6	92	204	3	207	207	16	10	26	1	1	79	6	85	169	2	171	171	283	283	
<b>MATHEMATICAL &amp; COMPUTER SCIENCES</b>	20	7	27	10	10	33	33	150	2	152	222	222	1,402	13	7	20	6	6	41	3	44	140	2	142	142	30	5	35	8	8	37	3	40	113	1	114	114	197	197	
Actuarial Mathematics & Statistics	5	5	4	4	4	6	6	99	1	100	115	115	1,402	8	8	8	3	3	11	11	96	96	97	119	119	11	1	12	7	7	17	17	17	17	76	76	112	112		
Computer Science	6	5	11	3	3	15	15	33	1	34	63	63	1,402	4	6	10	2	2	21	3	24	34	1	35	35	10	4	14	1	1	12	3	15	24	1	25	25	55	55	
Mathematics	9	2	11	3	3	12	12	18	18	44	44	44	1,402	1	1	2	1	1	9	9	10	10	10	22	22	9	9	9	9	8	8	8	8	13	13	20	20	54	54	
<b>TEXTILES &amp; DESIGN</b>	2	2	2	2	2	1	1	2	12	1	13	17	17	3	3	3	1	1	1	1	8	8	8	13	13	2	2	2	2	2	2	2	2	2	2	2	2	2	2	2
<b>EDINBURGH BUSINESS SCHOOL</b>	1	7	8	1	1	1	1	1	1	4	5	15	15	1	10	11	1	1	4	1	5	2	1	3	20	3	12	15	2	2	1	1	2	8	3	11	30	30		

Note inclusions/exclusions detailed on page 5.

POSTGRADUATE TAUGHT COURSE FRESHER STUDENTS BY GENDER 2013/14 - 2015/16

On-campus - Scotland

	2015/16			2014/15			2013/14		
	Gender	Total	%	Gender	Total	%	Gender	Total	%
<b>UNIVERSITY TOTAL</b>		<b>1,248</b>	<b>40</b>		<b>1,274</b>	<b>40</b>		<b>1,264</b>	<b>38</b>
<b>ENERGY, GEOSCIENCE, INFRASTRUCTURE &amp; SOCIETY</b>		<b>323</b>	<b>27</b>		<b>170</b>	<b>36</b>		<b>189</b>	<b>29</b>
Architectural Engineering	F	7	58	F	6	38	F	10	38
	M	5	42	M	10	63	M	16	62
<b>Total</b>		<b>12</b>			<b>16</b>			<b>26</b>	
Civil Engineering	F	12	19	F	16	30	F	8	13
	M	50	81	M	37	70	M	53	87
<b>Total</b>		<b>62</b>			<b>53</b>			<b>61</b>	
Construction Management & Surveying	F	12	28	F	13	27	F	17	30
	M	31	72	M	35	73	M	39	70
<b>Total</b>		<b>43</b>			<b>48</b>			<b>56</b>	
Petroleum Engineering	F	27	20	F	29	19	F	58	26
	M	111	80	M	123	81	M	168	74
<b>Total</b>		<b>138</b>			<b>152</b>			<b>226</b>	
Urban Studies	F	29	43	F	27	51	F	19	41
	M	39	57	M	26	49	M	27	59
<b>Total</b>		<b>68</b>			<b>53</b>			<b>46</b>	
<b>ENGINEERING &amp; PHYSICAL SCIENCES</b>		<b>112</b>	<b>18</b>		<b>131</b>	<b>15</b>		<b>124</b>	<b>23</b>
Chemical Engineering	F	4	21	F	3	15	F	4	31
	M	15	79	M	17	85	M	9	69
<b>Total</b>		<b>19</b>			<b>20</b>			<b>13</b>	
Chemistry	F			F			F	3	60
	M			M			M	2	40
<b>Total</b>								<b>5</b>	
Electrical, Electronic & Computer Engineering	F	9	18	F	7	13	F	9	22
	M	40	82	M	46	87	M	32	78
<b>Total</b>		<b>49</b>			<b>53</b>			<b>41</b>	
Mechanical Engineering	F	7	18	F	7	14	F	11	19
	M	32	82	M	42	86	M	48	81
<b>Total</b>		<b>39</b>			<b>49</b>			<b>59</b>	
Physics	F			F	2	22	F	2	33
	M	5	100	M	7	78	M	4	67
<b>Total</b>		<b>5</b>			<b>9</b>			<b>6</b>	
<b>LIFE SCIENCES</b>		<b>130</b>	<b>39</b>		<b>147</b>	<b>37</b>		<b>138</b>	<b>38</b>
Biology	F	39	35	F	46	38	F	31	29
	M	74	65	M	74	62	M	76	71
<b>Total</b>		<b>113</b>			<b>120</b>			<b>107</b>	
Applied Psychology	F	12	71	F	9	33	F	21	68
	M	5	29	M	18	67	M	10	32
<b>Total</b>		<b>17</b>			<b>27</b>			<b>31</b>	
<b>MANAGEMENT &amp; LANGUAGES</b>		<b>449</b>	<b>53</b>		<b>441</b>	<b>56</b>		<b>377</b>	<b>55</b>
Accountancy & Finance	F	40	41	F	51	47	F	39	48
	M	58	59	M	57	53	M	43	52
<b>Total</b>		<b>98</b>			<b>108</b>			<b>82</b>	
Economics	F	2	25	F			F		
	M	6	75	M	2	100	M		
<b>Total</b>		<b>8</b>			<b>2</b>				
Languages	F	59	76	F	43	73	F	36	78
	M	19	24	M	16	27	M	10	22
<b>Total</b>		<b>78</b>			<b>59</b>			<b>46</b>	
Management	F	136	51	F	154	57	F	131	53
	M	129	49	M	118	43	M	118	47
<b>Total</b>		<b>265</b>			<b>272</b>			<b>249</b>	
<b>MATHEMATICAL &amp; COMPUTER SCIENCES</b>		<b>211</b>	<b>40</b>		<b>200</b>	<b>40</b>		<b>179</b>	<b>39</b>
Actuarial Mathematics & Statistics	F	59	52	F	59	50	F	43	43
	M	55	48	M	60	50	M	58	57
<b>Total</b>		<b>114</b>			<b>119</b>			<b>101</b>	
Computer Science	F	16	29	F	13	22	F	15	30
	M	39	71	M	47	78	M	35	70
<b>Total</b>		<b>55</b>			<b>60</b>			<b>50</b>	
Mathematics	F	10	24	F	8	38	F	12	43
	M	32	76	M	13	62	M	16	57
<b>Total</b>		<b>42</b>			<b>21</b>			<b>28</b>	
<b>TEXTILES &amp; DESIGN</b>		<b>16</b>	<b>81</b>		<b>13</b>	<b>77</b>		<b>14</b>	<b>93</b>
Textiles & Design	F	13	81	F	10	77	F	13	93
	M	3	19	M	3	23	M	1	7
<b>EDINBURGH BUSINESS SCHOOL</b>		<b>7</b>	<b>14</b>		<b>20</b>	<b>30</b>		<b>17</b>	<b>24</b>
Edinburgh Business School	F	1	14	F	6	30	F	4	24
	M	6	86	M	14	70	M	13	76

Percentage totals for Schools/Institutes relate to the female population.

Note inclusions/exclusions detailed on page 5.

POSTGRADUATE RESEARCH STUDENTS BY SCHOOL/PROGRAMME, ATTENDANCE LEVEL AND GENDER: 2013/14 - 2015/16

On-campus - Scotland

	2015/16				2014/15				2013/14						
	Gender	ft	pt	Total	%	Gender	ft	pt	Total	%	Gender	ft	pt	Total	%
<b>UNIVERSITY TOTAL</b>		<b>776</b>	<b>68</b>	<b>844</b>		<b>677</b>	<b>66</b>	<b>743</b>			<b>663</b>	<b>61</b>	<b>727</b>		
<b>ENERGY, GEOSCIENCE, INFRASTRUCTURE &amp; SOCIETY</b>		<b>201</b>	<b>37</b>	<b>238</b>	<b>30</b>	<b>184</b>	<b>35</b>	<b>219</b>	<b>26</b>		<b>199</b>	<b>35</b>	<b>237</b>	<b>25</b>	
Civil Engineering	F	12	1	13	36	F	11	1	12	36	F	9	3	12	36
	M	23		23	64	M	21		21	64	M	20	1	21	64
<b>Total</b>		<b>35</b>	<b>1</b>	<b>36</b>		<b>32</b>	<b>1</b>	<b>33</b>			<b>29</b>	<b>4</b>	<b>33</b>		
Construction Management & Surveying	F	14	6	20	34	F	10	4	14	25	F	11	2	13	20
	M	23	15	38	66	M	28	14	42	75	M	42	9	51	80
<b>Total</b>		<b>37</b>	<b>21</b>	<b>58</b>		<b>38</b>	<b>18</b>	<b>56</b>			<b>53</b>	<b>11</b>	<b>64</b>		
Petroleum Engineering	F	21		21	20	F	14	1	15	17	F	15	3	18	18
	M	71	11	82	80	M	65	10	75	83	M	66	11	80	82
<b>Total</b>		<b>92</b>	<b>11</b>	<b>103</b>		<b>79</b>	<b>11</b>	<b>90</b>			<b>81</b>	<b>14</b>	<b>98</b>		
Urban Studies	F	17	1	18	44	F	14	1	15	38	F	15	2	17	40
	M	20	3	23	56	M	21	4	25	62	M	21	4	25	60
<b>Total</b>		<b>37</b>	<b>4</b>	<b>41</b>		<b>35</b>	<b>5</b>	<b>40</b>			<b>36</b>	<b>6</b>	<b>42</b>		
<b>ENGINEERING &amp; PHYSICAL SCIENCES</b>		<b>344</b>	<b>7</b>	<b>351</b>	<b>27</b>	<b>280</b>	<b>7</b>	<b>287</b>	<b>22</b>		<b>241</b>	<b>7</b>	<b>248</b>	<b>25</b>	
Chemical Engineering	F	12		12	36	F	9		9	33	F	10		10	42
	M	19	2	21	64	M	17	1	18	67	M	14		14	58
<b>Total</b>		<b>31</b>	<b>2</b>	<b>33</b>		<b>26</b>	<b>1</b>	<b>27</b>			<b>24</b>		<b>24</b>		
Chemistry	F	20		20	45	F	15		15	41	F	13		13	46
	M	24		24	55	M	22		22	59	M	15		15	54
<b>Total</b>		<b>44</b>		<b>44</b>		<b>37</b>		<b>37</b>			<b>28</b>		<b>28</b>		
Electrical, Electronic & Computer Engineering	F	20	1	21	23	F	10	1	11	19	F	9	1	10	26
	M	68	2	70	77	M	43	3	46	81	M	25	3	28	74
<b>Total</b>		<b>88</b>	<b>3</b>	<b>91</b>		<b>53</b>	<b>4</b>	<b>57</b>			<b>34</b>	<b>4</b>	<b>38</b>		
Mechanical Engineering	F	8	1	9	19	F	7	1	8	18	F	8	1	9	18
	M	38		38	81	M	37		37	82	M	39	1	40	82
<b>Total</b>		<b>46</b>	<b>1</b>	<b>47</b>		<b>44</b>	<b>1</b>	<b>45</b>			<b>47</b>	<b>2</b>	<b>49</b>		
Physics	F	32		32	24	F	21		21	17	F	20		20	18
	M	103	1	104	76	M	99	1	100	83	M	88	1	89	82
<b>Total</b>		<b>135</b>	<b>1</b>	<b>136</b>		<b>120</b>	<b>1</b>	<b>121</b>			<b>108</b>	<b>1</b>	<b>109</b>		
<b>LIFE SCIENCES</b>		<b>55</b>	<b>4</b>	<b>59</b>	<b>58</b>	<b>42</b>	<b>5</b>	<b>47</b>	<b>59</b>		<b>53</b>	<b>5</b>	<b>58</b>	<b>57</b>	
Biology	F	17	3	20	61	F	10	3	13	54	F	17	1	18	55
	M	12	1	13	39	M	11		11	46	M	14	1	15	45
<b>Total</b>		<b>29</b>	<b>4</b>	<b>33</b>		<b>21</b>	<b>3</b>	<b>24</b>			<b>31</b>	<b>2</b>	<b>33</b>		
Life Sciences	F	12		12	67	F	11		11	69	F	8		8	53
	M	6		6	33	M	4	1	5	31	M	6	1	7	47
<b>Total</b>		<b>18</b>		<b>18</b>		<b>15</b>	<b>1</b>	<b>16</b>			<b>14</b>	<b>1</b>	<b>15</b>		
Psychology	F	3		3	43	F	3	1	4	80	F	4	2	6	67
	M	4		4	57	M	1		1	20	M	3		3	33
<b>Total</b>		<b>7</b>		<b>7</b>		<b>4</b>	<b>1</b>	<b>5</b>			<b>7</b>	<b>2</b>	<b>9</b>		
Sport & Exercise Science	F				100	F				100	F				100
	M	1		1		M	2		2		M	1		1	
<b>Total</b>		<b>1</b>		<b>1</b>		<b>2</b>		<b>2</b>			<b>1</b>		<b>1</b>		
<b>MANAGEMENT &amp; LANGUAGES</b>		<b>75</b>	<b>9</b>	<b>84</b>	<b>50</b>	<b>82</b>	<b>10</b>	<b>92</b>	<b>53</b>		<b>69</b>	<b>7</b>	<b>76</b>	<b>49</b>	
Accountancy & Finance	F	7		7	47	F	7		7	41	F	5	1	6	33
	M	8		8	53	M	8	2	10	59	M	11	1	12	67
<b>Total</b>		<b>15</b>		<b>15</b>		<b>15</b>	<b>2</b>	<b>17</b>			<b>16</b>	<b>2</b>	<b>18</b>		
Economics	F	6		6	43	F	7		7	41	F	4		4	31
	M	6	2	8	57	M	9	1	10	59	M	9		9	69
<b>Total</b>		<b>12</b>	<b>2</b>	<b>14</b>		<b>16</b>	<b>1</b>	<b>17</b>			<b>13</b>		<b>13</b>		
Languages	F	13	3	16	84	F	16	1	17	94	F	14	1	15	79
	M	3		3	16	M	1		1	6	M	2	2	4	21
<b>Total</b>		<b>16</b>	<b>3</b>	<b>19</b>		<b>17</b>	<b>1</b>	<b>18</b>			<b>16</b>	<b>3</b>	<b>19</b>		
Management	F	12	1	13	36	F	14	4	18	45	F	11	1	12	46
	M	20	3	23	64	M	20	2	22	55	M	13	1	14	54
<b>Total</b>		<b>32</b>	<b>4</b>	<b>36</b>		<b>34</b>	<b>6</b>	<b>40</b>			<b>24</b>	<b>2</b>	<b>26</b>		
<b>MATHEMATICAL &amp; COMPUTER SCIENCES</b>		<b>85</b>	<b>9</b>	<b>94</b>	<b>24</b>	<b>75</b>	<b>7</b>	<b>82</b>	<b>32</b>		<b>88</b>	<b>6</b>	<b>94</b>	<b>30</b>	
Actuarial Mathematics & Statistics	F	3		3	20	F	4		4	25	F	5		5	26
	M	10	2	12	80	M	10	2	12	75	M	12	2	14	74
<b>Total</b>		<b>13</b>	<b>2</b>	<b>15</b>		<b>14</b>	<b>2</b>	<b>16</b>			<b>17</b>	<b>2</b>	<b>19</b>		
Computer Science	F	7	1	8	25	F	7	1	8	24	F	9	1	10	24
	M	19	5	24	75	M	22	3	25	76	M	29	2	31	76
<b>Total</b>		<b>26</b>	<b>6</b>	<b>32</b>		<b>29</b>	<b>4</b>	<b>33</b>			<b>38</b>	<b>3</b>	<b>41</b>		
Mathematics	F	11	1	12	26	F	13	1	14	42	F	12	1	13	38
	M	35		35	74	M	19		19	58	M	21		21	62
<b>Total</b>		<b>46</b>	<b>1</b>	<b>47</b>		<b>32</b>	<b>1</b>	<b>33</b>			<b>33</b>	<b>1</b>	<b>34</b>		
<b>TEXTILES &amp; DESIGN</b>		<b>16</b>	<b>2</b>	<b>18</b>	<b>78</b>	<b>14</b>	<b>2</b>	<b>16</b>	<b>75</b>		<b>13</b>	<b>1</b>	<b>14</b>	<b>50</b>	
Textiles & Design	F	12	2	14	78	F	10	2	12	75	F	6	1	7	50
	M	4		4	22	M	4		4	25	M	7		7	50

Percentage totals for Schools/Institutes relate to the female population.  
Note inclusions/exclusions detailed on page 5.



POSTGRADUATE RESEARCH STUDENTS BY SCHOOL/PROGRAMME AND FEE TYPE (Scottish, Rest of UK, EU, Overseas): 2013/14 - 2015/16  
On-campus - Scotland

SCHOOL/Programme	2015/16						2014/15						2013/14																									
	SCO		RUK		EU		OS		RUK		EU		OS		SCO		RUK		EU		OS																	
	ft	pt	ft	pt	ft	pt	ft	pt	ft	pt	ft	pt	ft	pt	ft	pt	ft	pt	ft	pt	ft	pt																
<b>UNIVERSITY TOTAL</b>	137	22	159	89	2	91	199	12	211	351	32	383	844	149	22	171	55	4	59	169	13	182	383	842	833	209	29	238	5	137	16	153	393	30	423	819		
<b>ENERGY, GEOSCIENCE, INFRASTRUCTURE &amp; SOCIETY</b>	19	8	27	10	1	11	20	2	22	152	26	178	238	20	8	28	7	1	8	19	2	21	138	24	162	219	36	12	48	2	15	5	20	146	18	164	234	
Civil Engineering	4	4	1	1	5	3	12	5	26	13	33	33	36	4	4	1	1	2	4	4	4	23	23	23	33	7	2	9	1	1	2	21	1	22	33			
Construction Management & Surveying	7	3	10	2	2	2	1	3	26	17	43	58	6	2	8	2	2	4	4	26	16	42	56	10	3	13	1	1	5	5	37	8	45	64				
Petroleum Engineering	2	2	4	3	3	9	9	78	9	87	103	103	3	3	6	2	2	8	1	9	66	7	73	90	9	4	13	8	2	10	64	8	72	95				
Urban Studies	6	3	9	5	5	4	1	5	22	22	41	41	7	3	10	2	2	3	1	4	23	1	24	40	10	3	13	1	1	2	3	24	1	25	42			
<b>ENGINEERING &amp; PHYSICAL SCIENCES</b>	73	3	76	53	53	117	2	119	101	2	103	351	69	3	72	36	36	93	2	95	82	2	84	287	98	2	100	1	1	67	4	71	75	1	76	248		
Chemical Engineering	3	2	5	3	3	12	7	6	13	6	6	33	5	1	6	2	2	7	7	12	12	12	27	27	8	8	1	1	5	5	10	10	24	24				
Chemistry	17	17	14	14	7	7	6	6	6	6	6	44	15	15	8	8	8	8	8	8	6	6	37	37	17	17	17	17	6	6	5	5	28	28				
Electrical, Electronic & Computer Engineering	11	11	7	7	7	37	2	39	33	1	34	91	8	8	2	2	26	2	28	17	2	19	57	57	8	8	8	10	3	13	16	1	17	38	38			
Mechanical Engineering	9	1	10	1	1	14	14	22	22	47	47	47	10	1	11	2	2	12	12	20	20	20	45	45	13	1	14	12	1	13	22	22	49	49				
Physics	33	33	28	28	28	47	27	1	28	136	136	136	31	1	32	22	22	40	40	40	27	27	121	121	52	1	53	34	34	34	34	22	22	109	109			
<b>LIFE SCIENCES</b>	13	2	15	6	6	20	1	21	16	1	17	59	10	2	12	4	1	5	14	1	15	14	1	15	47	23	4	27	1	10	10	19	1	20	58	58		
Biology	5	2	7	5	5	6	1	7	13	1	14	33	4	1	5	3	3	3	3	4	4	11	1	12	24	12	1	13	1	2	2	16	1	17	33	33		
Life Sciences	2	2	1	1	1	12	12	3	3	3	3	18	2	2	1	1	2	9	9	9	3	3	16	16	6	1	7	7	7	7	7	7	1	1	15	15		
Psychology	5	5	5	5	5	5	5	5	5	5	5	15	2	2	2	2	2	2	2	2	2	2	6	6	5	5	5	5	5	5	5	5	5	5	9	9		
Sport & Exercise Science	1	1	1	1	1	1	1	1	1	1	1	3	2	2	2	2	2	2	2	2	2	2	2	2	2	2	2	2	2	2	2	2	2	2	2	1	1	
<b>MANAGEMENT &amp; LANGUAGES</b>	16	5	21	6	6	18	3	21	35	1	36	84	22	3	25	6	1	7	19	4	23	35	2	37	92	18	3	21	19	2	21	32	2	34	76	76		
Accountancy & Finance	1	1	1	1	1	2	2	2	11	11	15	15	1	1	1	1	1	1	1	1	1	1	1	1	1	2	1	3	1	1	1	1	1	1	1	1	1	
Economics	4	1	5	1	1	7	1	8	4	1	5	19	2	2	2	1	4	1	5	9	9	9	17	17	2	2	2	2	2	2	2	2	2	2	2	2	2	
Languages	11	4	15	4	4	7	1	8	4	1	5	19	5	5	5	1	5	1	6	6	6	6	18	18	4	2	6	4	1	5	8	1	5	8	8	19	19	
Management	11	4	15	4	4	7	1	8	4	1	5	19	14	3	17	3	1	4	9	2	11	8	8	40	40	10	10	10	8	1	9	6	1	7	26	26		
<b>MATHEMATICAL &amp; COMPUTER SCIENCES</b>	13	2	15	14	1	15	22	4	26	36	2	38	94	21	1	22	1	1	16	3	19	38	2	40	82	23	3	26	1	18	3	21	46	46	94	94		
Actuarial Mathematics & Statistics	1	1	1	1	1	3	1	4	9	1	10	15	3	3	3	3	3	3	3	3	3	3	9	10	16	3	1	4	3	1	4	11	11	19	19			
Computer Science	4	1	5	1	1	2	6	3	9	15	1	16	32	7	7	7	1	1	6	2	8	16	1	17	33	10	1	11	9	2	11	19	19	41	41			
Mathematics	8	1	9	13	13	13	13	13	12	12	47	47	11	1	12	1	8	8	8	8	8	13	13	33	33	10	1	11	1	6	6	6	6	6	6	16	16	
<b>TEXTILES &amp; DESIGN</b>	3	2	5	5	2	2	2	2	11	11	18	18	4	2	6	6	6	6	6	6	6	6	6	10	10	16	2	1	3	3	3	3	3	3	3	3	11	11

Note inclusions/exclusions detailed on page 5.

**POSTGRADUATE RESEARCH FRESHER STUDENTS BY GENDER: 2013/14 - 2015/16**  
**On-campus - Scotland**

	2015/16			2014/15			2013/14		
	Gender	Total	%	Gender	Total	%	Gender	Total	%
<b>UNIVERSITY TOTAL</b>		<b>182</b>	<b>35</b>		<b>186</b>	<b>31</b>		<b>170</b>	<b>37</b>
<b>ENERGY, GEOSCIENCE, INFRASTRUCTURE &amp; SOCIETY</b>		<b>30</b>	<b>43</b>		<b>36</b>	<b>25</b>		<b>37</b>	<b>30</b>
Civil Engineering	F	2	40	F	4	67	F	3	38
	M	3	60	M	2	33	M	5	62
<b>Total</b>		<b>5</b>			<b>6</b>			<b>8</b>	
Construction Management & Surveying	F	4	44	F	1	20	F	2	29
	M	5	56	M	4	80	M	5	71
<b>Total</b>		<b>9</b>			<b>5</b>			<b>7</b>	
Petroleum Engineering	F	4	36	F	3	14	F	2	14
	M	7	64	M	18	86	M	12	86
<b>Total</b>		<b>11</b>			<b>21</b>			<b>14</b>	
Urban Studies	F	3	60	F	1	25	F	4	50
	M	2	40	M	3	75	M	4	50
<b>Total</b>		<b>5</b>			<b>4</b>			<b>8</b>	
<b>ENGINEERING &amp; PHYSICAL SCIENCES</b>		<b>96</b>	<b>29</b>		<b>77</b>	<b>19</b>		<b>55</b>	<b>22</b>
Chemical Engineering	F	4	44	F			F	2	29
	M	5	56	M	8	100	M	5	71
<b>Total</b>		<b>9</b>			<b>8</b>			<b>7</b>	
Chemistry	F	8	62	F	5	36	F	2	29
	M	5	38	M	9	64	M	5	71
<b>Total</b>		<b>13</b>			<b>14</b>			<b>7</b>	
Electrical, Electronic & Computer Engineering	F	7	20	F	3	13	F	1	14
	M	28	80	M	20	87	M	6	86
<b>Total</b>		<b>35</b>			<b>23</b>			<b>7</b>	
Mechanical Engineering	F	1	11	F	1	10	F	3	38
	M	8	89	M	9	90	M	5	62
<b>Total</b>		<b>9</b>			<b>10</b>			<b>8</b>	
Physics	F	8	27	F	6	27	F	4	15
	M	22	73	M	16	73	M	22	85
<b>Total</b>		<b>30</b>			<b>22</b>			<b>26</b>	
<b>LIFE SCIENCES</b>		<b>9</b>	<b>67</b>		<b>11</b>	<b>73</b>		<b>12</b>	<b>92</b>
Biology	F	6	75	F	4	80	F	5	83
	M	2	25	M	1	20	M	1	17
<b>Total</b>		<b>8</b>			<b>5</b>			<b>6</b>	
Life Sciences	F			F	4	80	F	3	100
	M			M	1	20	M		
<b>Total</b>					<b>5</b>			<b>3</b>	
Psychology	F			F			F	3	100
	M	1	100	M			M		
<b>Total</b>		<b>1</b>						<b>3</b>	
Sport & Exercise Science	F			F			F		
	M			M	1		M		
<b>Total</b>					<b>1</b>				
<b>MANAGEMENT &amp; LANGUAGES</b>		<b>17</b>	<b>53</b>		<b>24</b>	<b>54</b>		<b>28</b>	<b>68</b>
Accountancy & Finance	F	1	33	F	3	50	F	2	40
	M	2	67	M	3	50	M	3	60
<b>Total</b>		<b>3</b>			<b>6</b>			<b>5</b>	
Economics	F	2	100	F	2	50	F	3	43
	M			M	2	50	M	4	57
<b>Total</b>		<b>2</b>			<b>4</b>			<b>7</b>	
Languages	F	2	50	F	3	100	F	9	100
	M	2	50	M			M		
<b>Total</b>		<b>4</b>			<b>3</b>			<b>9</b>	
Management	F	4	50	F	5	45	F	5	71
	M	4	50	M	6	55	M	2	29
<b>Total</b>		<b>8</b>			<b>11</b>			<b>7</b>	
<b>MATHEMATICAL &amp; COMPUTER SCIENCES</b>		<b>26</b>	<b>15</b>		<b>13</b>	<b>38</b>		<b>21</b>	<b>33</b>
Actuarial Mathematics & Statistics	F	1	33	F			F	1	20
	M	2	67	M			M	4	80
<b>Total</b>		<b>3</b>						<b>5</b>	
Computer Science	F			F	1	25	F	4	44
	M	5	100	M	3	75	M	5	56
<b>Total</b>		<b>5</b>			<b>4</b>			<b>9</b>	
Mathematics	F	3	17	F	4	44	F	2	29
	M	15	83	M	5	56	M	5	71
<b>Total</b>		<b>18</b>			<b>9</b>			<b>7</b>	
<b>TEXTILES &amp; DESIGN</b>		<b>4</b>	<b>100</b>		<b>4</b>	<b>100</b>		<b>3</b>	<b>33</b>
Textiles & Design	F	4	100	F	4	100	F	1	33
	M			M			M	2	67

Percentage totals for Schools/Institutes relate to the female population.  
 Note inclusions/exclusions detailed on page 5.

**UNDERGRADUATE STUDENTS BY SCHOOL/PROGRAMME, ATTENDANCE LEVEL AND GENDER: 2012/13 - 2015/16**  
**On-campus - Dubai**

SCHOOL/Programme	2015/16					2014/15					2013/14					2012/13					
	Gender	ft	pt	Total	%	Gender	ft	pt	Total	%	Gender	ft	pt	Total	%	Gender	ft	pt	Total	%	
<b>UNIVERSITY TOTAL</b>		<b>2,431</b>	<b>37</b>	<b>2,468</b>		<b>2,411</b>	<b>56</b>	<b>2,467</b>		<b>2,371</b>	<b>10</b>	<b>2,381</b>		<b>2,153</b>	<b>28</b>	<b>2,181</b>					
<b>ENERGY, GEOSCIENCE, INFRASTRUCTURE &amp; SOCIETY</b>		<b>214</b>	<b>3</b>	<b>217</b>	<b>42</b>	<b>183</b>	<b>7</b>	<b>190</b>	<b>44</b>	<b>207</b>	<b>4</b>	<b>211</b>	<b>36</b>	<b>171</b>	<b>26</b>	<b>197</b>	<b>31</b>				
Architectural Engineering	F	53	1	54	65	F	58	5	63	76	F	55		55	70	F	37		37	69	
	M	29		29	35	M	20		20	24	M	23	1	24	30	M	15	2	17	31	
		<b>82</b>	<b>1</b>	<b>83</b>		<b>78</b>	<b>5</b>	<b>83</b>		<b>78</b>	<b>1</b>	<b>79</b>		<b>52</b>	<b>2</b>	<b>54</b>					
Architecture	F	18		18	72	F					F					F					
	M	7		7	28	M					M					M					
		<b>25</b>		<b>25</b>																	
Civil Engineering	F	18	1	19	17	F	20	1	21	20	F	20		20	17	F	23		23	20	
	M	89	1	90	83	M	85		85	80	M	98	1	99	83	M	85	5	90	80	
		<b>107</b>	<b>2</b>	<b>109</b>		<b>105</b>	<b>1</b>	<b>106</b>		<b>118</b>	<b>1</b>	<b>119</b>		<b>108</b>	<b>5</b>	<b>113</b>					
Construction Management & Surveying	F					F					F	1	1	2	15	F			2	7	
	M					M		1	1	100	M	10	1	11	85	M	11	17	28	93	
								<b>1</b>	<b>1</b>			<b>11</b>	<b>2</b>	<b>13</b>		<b>11</b>	<b>19</b>	<b>30</b>			
<b>ENGINEERING &amp; PHYSICAL SCIENCES</b>		<b>603</b>	<b>1</b>	<b>604</b>	<b>16</b>	<b>620</b>	<b>1</b>	<b>621</b>	<b>13</b>	<b>643</b>	<b>643</b>	<b>13</b>	<b>616</b>	<b>616</b>	<b>11</b>						
Chemical Engineering	F	9		9	45	F					F					F					
	M	11		11	55	M					M					M					
		<b>20</b>		<b>20</b>																	
Combined Studies (EPS)	F	4		4	10	F	5		5	8	F					F					
	M	37		37	90	M	57		57	92	M	47		47	100	M	31		31	100	
		<b>41</b>		<b>41</b>		<b>62</b>		<b>62</b>		<b>47</b>	<b>47</b>		<b>31</b>	<b>31</b>		<b>31</b>		<b>31</b>			
Degree Entry Prog. in Engineering	F	28		28	25	F	21		21	17	F	23		23	17	F	16		16	12	
	M	85		85	75	M	104	1	105	83	M	109		109	83	M	121		121	88	
		<b>113</b>		<b>113</b>		<b>125</b>	<b>1</b>	<b>126</b>		<b>132</b>	<b>132</b>		<b>137</b>	<b>137</b>		<b>137</b>		<b>137</b>			
Electrical, Electronic & Computer Eng	F	32		32	25	F	28		28	21	F	35		35	23	F	28		28	20	
	M	97		97	75	M	104		104	79	M	115		115	77	M	113		113	80	
		<b>129</b>		<b>129</b>		<b>132</b>		<b>132</b>		<b>150</b>	<b>150</b>		<b>141</b>	<b>141</b>		<b>141</b>		<b>141</b>			
Mechanical Engineering	F	23		23	8	F	24		24	8	F	28		28	9	F	24		24	8	
	M	277	1	278	92	M	277		277	92	M	286		286	91	M	283		283	92	
		<b>300</b>	<b>1</b>	<b>301</b>		<b>301</b>		<b>301</b>		<b>314</b>	<b>314</b>		<b>307</b>	<b>307</b>		<b>307</b>		<b>307</b>			
<b>LIFE SCIENCES</b>		<b>159</b>		<b>159</b>	<b>86</b>	<b>137</b>		<b>137</b>	<b>89</b>	<b>101</b>		<b>101</b>	<b>85</b>	<b>54</b>		<b>54</b>		<b>54</b>	<b>80</b>		
Psychology	F	137		137	86	F	122		122	89	F	86		86	85	F	43		43	80	
	M	22		22	14	M	15		15	11	M	15		15	15	M	11		11	20	
		<b>159</b>		<b>159</b>		<b>137</b>		<b>137</b>		<b>101</b>	<b>101</b>		<b>54</b>	<b>54</b>		<b>54</b>		<b>54</b>			
<b>MANAGEMENT &amp; LANGUAGES</b>		<b>1,088</b>	<b>15</b>	<b>1,103</b>	<b>45</b>	<b>1,099</b>	<b>31</b>	<b>1,130</b>	<b>45</b>	<b>1,133</b>	<b>1</b>	<b>1,134</b>	<b>43</b>	<b>1,083</b>		<b>1,083</b>		<b>42</b>			
Accountancy & Finance	F	194		194	48	F	203	1	204	50	F	177		177	46	F	185		185	43	
	M	213		213	52	M	206	1	207	50	M	208		208	54	M	249		249	57	
		<b>407</b>		<b>407</b>		<b>409</b>	<b>2</b>	<b>411</b>		<b>385</b>	<b>385</b>		<b>434</b>	<b>434</b>		<b>434</b>		<b>434</b>			
Degree Entry Prog. in Management	F	45		45	49	F	60		60	51	F	71		71	51	F	53		53	46	
	M	47		47	51	M	58		58	49	M	68		68	49	M	61		61	54	
		<b>92</b>		<b>92</b>		<b>118</b>		<b>118</b>		<b>139</b>	<b>139</b>		<b>114</b>	<b>114</b>		<b>114</b>		<b>114</b>			
Management	F	254	1	255	42	F	243	5	248	41	F	243		243	40	F	215		215	40	
	M	335	14	349	58	M	329	24	353	59	M	366	1	367	60	M	320		320	60	
		<b>589</b>	<b>15</b>	<b>604</b>		<b>572</b>	<b>29</b>	<b>601</b>		<b>609</b>	<b>1</b>	<b>610</b>		<b>535</b>	<b>535</b>		<b>535</b>		<b>535</b>		
<b>MATHEMATICAL &amp; COMP SCIENCES</b>		<b>120</b>	<b>9</b>	<b>129</b>	<b>29</b>	<b>114</b>	<b>2</b>	<b>116</b>	<b>29</b>	<b>81</b>	<b>5</b>	<b>86</b>	<b>29</b>	<b>54</b>	<b>2</b>	<b>56</b>	<b>23</b>				
Computer Science	F	37		37	29	F	34		34	29	F	24	1	25	29	F	13		13	23	
	M	83	9	92	71	M	80	2	82	71	M	57	4	61	71	M	41	2	43	77	
<b>TEXTILES</b>		<b>247</b>	<b>9</b>	<b>256</b>	<b>91</b>	<b>258</b>	<b>15</b>	<b>273</b>	<b>92</b>	<b>206</b>		<b>206</b>	<b>93</b>	<b>175</b>		<b>175</b>	<b>93</b>				
Degree Entry Prog. in Textiles & Design	F	27		27	77	F	49		49	94	F	29		29	91	F	26		26	87	
	M	8		8	23	M	3		3	6	M	3		3	9	M	4		4	13	
		<b>35</b>		<b>35</b>		<b>52</b>		<b>52</b>		<b>32</b>	<b>32</b>		<b>30</b>	<b>30</b>		<b>30</b>		<b>30</b>			
Textiles and Design	F	199	8	207	94	F	190	13	203	92	F	162		162	93	F	137		137	94	
	M	13	1	14	6	M	16	2	18	8	M	12		12	7	M	8		8	6	
		<b>212</b>	<b>9</b>	<b>221</b>		<b>206</b>	<b>15</b>	<b>221</b>		<b>174</b>	<b>174</b>		<b>145</b>	<b>145</b>		<b>145</b>		<b>145</b>			

The above numbers are excluded from student numbers reported on previous pages.  
 Percentage totals for Schools relate to the female population.

**POSTGRADUATE TAUGHT STUDENTS BY SCHOOL/PROGRAMME, ATTENDANCE LEVEL AND GENDER: 2012/13 - 2015/16**  
**On-campus - Dubai**

SCHOOL/Programme	2015/16				2014/15				2013/14				2012/13			
	ft	pt	Tot	%	ft	pt	Tot	%	ft	pt	Tot	%	ft	pt	Tot	%
<b>UNIVERSITY TOTAL</b>	<b>391</b>	<b>835</b>	<b>1,226</b>		<b>364</b>	<b>805</b>	<b>1,169</b>		<b>408</b>	<b>694</b>	<b>1,102</b>		<b>339</b>	<b>661</b>	<b>1,000</b>	
<b>ENERGY, GEOSCIENCE, INFRASTRUCTURE &amp; SOCIETY</b>	<b>158</b>	<b>441</b>	<b>599</b>	<b>13</b>	<b>165</b>	<b>407</b>	<b>572</b>	<b>11</b>	<b>168</b>	<b>332</b>	<b>500</b>	<b>12</b>	<b>149</b>	<b>306</b>	<b>455</b>	<b>13</b>
Civil Engineering	F 5	4	9	11	F 6	6	12	15	F 7	6	13	17	F 2	6	8	17
	M 27	48	75	89	M 22	46	68	85	M 21	43	64	83	M 17	22	39	83
	<b>32</b>	<b>52</b>	<b>84</b>		<b>28</b>	<b>52</b>	<b>80</b>		<b>28</b>	<b>49</b>	<b>77</b>		<b>19</b>	<b>28</b>	<b>47</b>	
Construction Management & Surveying	F 12	34	46	11	F 14	26	40	10	F 11	19	30	10	F 13	23	36	12
	M 68	304	372	89	M 71	273	344	90	M 65	216	281	90	M 50	213	263	88
	<b>80</b>	<b>338</b>	<b>418</b>		<b>85</b>	<b>299</b>	<b>384</b>		<b>76</b>	<b>235</b>	<b>311</b>		<b>63</b>	<b>236</b>	<b>299</b>	
Petroleum Engineering	F 7	2	9	20	F 6	1	7	10	F 5	3	8	11	F 4	2	6	8
	M 25	11	36	80	M 38	23	61	90	M 49	17	66	89	M 55	18	73	92
	<b>32</b>	<b>13</b>	<b>45</b>		<b>44</b>	<b>24</b>	<b>68</b>		<b>54</b>	<b>20</b>	<b>74</b>		<b>59</b>	<b>20</b>	<b>79</b>	
Urban Studies	F 5	8	13	25	F 1	5	6	15	F 3	7	10	26	F 1	8	9	30
	M 9	30	39	75	M 7	27	34	85	M 7	21	28	74	M 7	14	21	70
	<b>14</b>	<b>38</b>	<b>52</b>		<b>8</b>	<b>32</b>	<b>40</b>		<b>10</b>	<b>28</b>	<b>38</b>		<b>8</b>	<b>22</b>	<b>30</b>	
<b>ENGINEERING &amp; PHYSICAL SCIENCES</b>	<b>34</b>	<b>72</b>	<b>106</b>	<b>17</b>	<b>30</b>	<b>83</b>	<b>113</b>	<b>13</b>	<b>42</b>	<b>83</b>	<b>125</b>	<b>18</b>	<b>33</b>	<b>73</b>	<b>106</b>	<b>13</b>
Mechanical Engineering	F 10	8	18	17	F 4	11	15	13	F 11	11	22	18	F 9	5	14	13
	M 24	64	88	83	M 26	72	98	87	M 31	72	103	82	M 24	68	92	87
	<b>34</b>	<b>72</b>	<b>106</b>		<b>30</b>	<b>83</b>	<b>113</b>		<b>42</b>	<b>83</b>	<b>125</b>		<b>33</b>	<b>73</b>	<b>106</b>	
<b>LIFE SCIENCES</b>	<b>15</b>	<b>19</b>	<b>34</b>	<b>79</b>	<b>15</b>	<b>12</b>	<b>27</b>	<b>70</b>	<b>20</b>	<b>12</b>	<b>32</b>	<b>59</b>	<b>13</b>	<b>12</b>	<b>25</b>	<b>68</b>
Psychology	F 15	12	27	79	F 11	8	19	70	F 9	10	19	59	F 10	7	17	68
	M 7	7	14	21	M 4	4	8	30	M 11	2	13	41	M 3	5	8	32
	<b>15</b>	<b>19</b>	<b>34</b>		<b>15</b>	<b>12</b>	<b>27</b>		<b>20</b>	<b>12</b>	<b>32</b>		<b>13</b>	<b>12</b>	<b>25</b>	
<b>MANAGEMENT &amp; LANGUAGES</b>	<b>146</b>	<b>147</b>	<b>293</b>	<b>38</b>	<b>101</b>	<b>150</b>	<b>251</b>	<b>37</b>	<b>121</b>	<b>154</b>	<b>275</b>	<b>39</b>	<b>107</b>	<b>159</b>	<b>266</b>	<b>38</b>
Accountancy & Finance	F 7	17	24	43	F 11	17	28	50	F 9	13	22	39	F 9	8	17	35
	M 16	16	32	57	M 11	17	28	50	M 19	15	34	61	M 13	18	31	65
	<b>23</b>	<b>33</b>	<b>56</b>		<b>22</b>	<b>34</b>	<b>56</b>		<b>28</b>	<b>28</b>	<b>56</b>		<b>22</b>	<b>26</b>	<b>48</b>	
Management	F 48	39	87	37	F 24	40	64	33	F 34	51	85	39	F 32	52	84	39
	M 75	75	150	63	M 55	76	131	67	M 59	75	134	61	M 53	81	134	61
	<b>123</b>	<b>114</b>	<b>237</b>		<b>79</b>	<b>116</b>	<b>195</b>		<b>93</b>	<b>126</b>	<b>219</b>		<b>85</b>	<b>133</b>	<b>218</b>	
<b>MATHEMATICAL &amp; COMP SCIENCES</b>	<b>19</b>	<b>30</b>	<b>49</b>	<b>31</b>	<b>30</b>	<b>25</b>	<b>55</b>	<b>33</b>	<b>43</b>	<b>24</b>	<b>67</b>	<b>28</b>	<b>24</b>	<b>33</b>	<b>57</b>	<b>25</b>
Computer Science	F 8	7	15	31	F 9	9	18	33	F 14	5	19	28	F 4	10	14	25
	M 11	23	34	69	M 21	16	37	67	M 29	19	48	72	M 20	23	43	75
<b>EBS (MBA)</b>	<b>19</b>	<b>126</b>	<b>145</b>	<b>28</b>	<b>23</b>	<b>128</b>	<b>151</b>	<b>23</b>	<b>14</b>	<b>89</b>	<b>103</b>	<b>18</b>	<b>13</b>	<b>78</b>	<b>91</b>	<b>19</b>
Edinburgh Business School	F 10	31	41	28	F 8	27	35	23	F 3	16	19	18	F 5	12	17	19
	M 9	95	104	72	M 15	101	116	77	M 11	73	84	82	M 8	66	74	81

The above numbers are excluded from student numbers reported on previous pages.  
 Percentage totals for Schools relate to the **female** population.

**POSTGRADUATE RESEARCH STUDENTS BY SCHOOL/PROGRAMME, ATTENDANCE LEVEL AND GENDER: 2015/16**  
**On-campus - Dubai**

SCHOOL/Programme	2015/16			
	ft	pt	Tot	%
<b>UNIVERSITY TOTAL</b>	<b>4</b>	<b>2</b>	<b>6</b>	
<b>Engineering &amp; Physical Sciences</b>	<b>2</b>		<b>2</b>	
Mechanical Engineering	F 1		1	50
	M 1		1	50
<b>Management &amp; Languages</b>	<b>1</b>		<b>1</b>	
Management	F 1		1	100
	M			
<b>Energy, Geoscience, Infrastructure &amp; Society</b>	<b>1</b>	<b>2</b>	<b>3</b>	
Civil Engineering	F			
	M 1		1	100
Construction Management & Surveying	F	2	2	100
	M			

**UNDERGRADUATE STUDENTS BY SCHOOL/  
PROGRAMME, ATTENDANCE LEVEL AND GENDER:  
2015/16**

**On-campus - Malaysia**

SCHOOL/Programme	2015/16			
	Gender	ft	pt	Total %
<b>UNIVERSITY TOTAL</b>		<b>723</b>	<b>1</b>	<b>724</b>
<b>ENERGY, GEOSCIENCE, INFRASTRUCTURE &amp; SOCIETY</b>		<b>62</b>	<b>1</b>	<b>63 32</b>
Civil Engineering	F	1	1	5
	M	21	21	95
		<b>22</b>	<b>22</b>	
Construction Management & Surveying	F	19	19	46
	M	21	1	22 54
		<b>40</b>	<b>1</b>	<b>41</b>
<b>ENGINEERING &amp; PHYSICAL SCIENCES</b>		<b>215</b>	<b>215</b>	<b>23</b>
Chemical Engineering	F	41	41	29
	M	100	100	71
		<b>141</b>	<b>141</b>	
Electrical, Electronic & Computer Eng	F	4	4	31
	M	9	9	69
		<b>13</b>	<b>13</b>	
Mechanical Engineering	F	4	4	7
	M	57	57	93
		<b>61</b>	<b>61</b>	
<b>LIFE SCIENCES</b>		<b>12</b>	<b>12</b>	<b>75</b>
Applied Psychology	F	9	9	75
	M	3	3	25
		<b>12</b>	<b>12</b>	
<b>MANAGEMENT &amp; LANGUAGES</b>		<b>73</b>	<b>73</b>	<b>48</b>
Accountancy & Finance	F	6	6	33
	M	12	12	67
		<b>18</b>	<b>18</b>	
Management	F	29	29	53
	M	26	26	47
		<b>55</b>	<b>55</b>	
<b>MATHEMATICAL &amp; COMP SCIENCES</b>		<b>106</b>	<b>106</b>	<b>47</b>
Actuarial Mathematics and Statistics	F	50	50	47
	M	56	56	53
		<b>106</b>	<b>106</b>	
<b>UNIVERSITY WIDE</b>		<b>255</b>	<b>255</b>	<b>40</b>
Malaysia Foundation Programme	F	102	102	40
	M	153	153	60
		<b>255</b>	<b>255</b>	

The above numbers are excluded from student numbers reported on previous pages.

**POSTGRADUATE TAUGHT STUDENTS BY SCHOOL/  
PROGRAMME, ATTENDANCE LEVEL AND GENDER:  
2015/16**

**On-campus - Malaysia**

SCHOOL/Programme	2015/16				
	Gender	ft	pt	Tot	%
<b>UNIVERSITY TOTAL</b>		<b>63</b>	<b>131</b>	<b>194</b>	
<b>ENERGY, GEOSCIENCE, INFRASTRUCTURE &amp; SOCIETY</b>		<b>34</b>	<b>41</b>	<b>75</b>	<b>27</b>
Construction Management & Surveying	F	3	4	7	29
	M	8	9	17	71
		<b>11</b>	<b>13</b>	<b>24</b>	
Petroleum Engineering	F	5	8	13	25
	M	18	20	38	75
		<b>23</b>	<b>28</b>	<b>51</b>	
<b>ENGINEERING &amp; PHYSICAL SCIENCES</b>		<b>8</b>	<b>6</b>	<b>14</b>	<b>29</b>
Mechanical Engineering	F	2	2	4	29
	M	6	4	10	71
		<b>8</b>	<b>6</b>	<b>14</b>	
<b>LIFE SCIENCES</b>		<b>10</b>	<b>6</b>	<b>16</b>	<b>94</b>
Psychology	F	9	6	15	94
	M	1	1	1	6
		<b>10</b>	<b>6</b>	<b>16</b>	
<b>MANAGEMENT &amp; LANGUAGES</b>		<b>11</b>	<b>7</b>	<b>18</b>	<b>50</b>
Management	F	5	4	9	50
	M	6	3	9	50
		<b>11</b>	<b>7</b>	<b>18</b>	
<b>EBS (MBA)</b>			<b>71</b>	<b>71</b>	<b>35</b>
Edinburgh Business School	F		25	25	35
	M		46	46	65
			<b>71</b>	<b>71</b>	

The above numbers are excluded from student numbers reported on previous pages.

**UNDERGRADUATE INCOMING EXCHANGE, NON-GRADUATING AND VISITING STUDENTS: 2013/14 - 2015/16**

SCHOOL/Programme	2015/16						2014/15						2013/14								
	EU/UK			OS			EU/UK			OS			EU/UK			OS					
	ft	pt	Tot	ft	pt	Tot	ft	pt	Tot	ft	pt	Tot	ft	pt	Tot	ft	pt	Tot			
<b>UNIVERSITY TOTAL</b>	146	39	185	40		40	225	136	23	159	70		70	229	138	39	177	44	44	221	
ENERGY, GEOSCIENCE, INFRASTRUCTURE & SOCIETY	4		4	10		10	14	9		9	38		38	47	9		9	25		25	34
ENGINEERING & PHYSICAL SCIENCES	20	39	59	4		4	63	20	23	43	6		6	49	26	37	63				63
LIFE SCIENCES																					
MANAGEMENT & LANGUAGES	118		118	16		16	134	103		103	15		15	118	97		97	11		11	108
MATHEMATICAL & COMP SCIENCES	2		2	4		4	6	4		4	3		3	7	4		4	4		4	8
TEXTILES & DESIGN	2		2	6		6	8				8		8	8	2	2	4	4		4	8

The above numbers are excluded from student numbers reported on previous pages.

The EU/UK numbers includes the following number of UK students: 2014/15 - 0, 2013/14 - 2.

**UNDERGRADUATE FRESHER STUDENTS: DOMICILES 2012/13 - 2015/16**

On-campus - Scotland

Academic year of entry	Year 1	Year 2	Year 3	Year 4	Year 5	Total: All Years 2015/16	2014/15	2013/14	2012/13
<b>UNIVERSITY TOTAL</b>	1,468	209	149	1		1,827	1,799	2,131	1,775
<b>UK Total</b>	1,291	163	82			1,536	1,501	1,717	1,347
Scotland	933	130	77			1,140	1,088	1,331	1,013
Rest of UK	358	33	5			396	413	386	334
<b>EU Total</b>	56	4	9			69	53	135	193
France	5		7			12	11	31	76
Spain	8					8	8	6	5
Germany	5		2			7	2	14	10
Italy	6					6	3	6	8
Ireland	5	1				6	1		
Sweden	4					4	4	6	1
Greece	3	1				4	3	8	17
Poland	4					4	3	5	11
Cyprus	3					3	3	7	12
Czech Republic	2	1				3	1	3	2
Belgium	2					2	1	1	2
Portugal	2					2		1	2
<b>Other EU</b>	7	1				8	13	47	47
<b>Overseas non-EU Total</b>	121	42	58	1		222	245	279	235
China	21	18	55	1		95	96	64	48
Norway	31	1				32	26	38	46
Malaysia	7	8				15	27	36	30
Saudi Arabia	5	2				7	7	5	3
Hong Kong	6					6	8	3	7
USA	5	1				6	2	7	3
UAE	4	1				5	6	9	5
India	3	2				5	4	10	7
Kazakhstan	3	2				5	2	7	5
Azerbaijan	4					4	3		3
South Africa	3		1			4	2	2	3
Qatar	4					4		1	3
Oman	2	1				3	7	43	23
Russia	1	2				3	5	2	3
Singapore		2	1			3	1	4	2
Ukraine	2					2	1	3	
Zimbabwe	2					2	1	1	3
Canada	2					2		3	
Morocco	2					2			1
<b>Other Overseas non-EU</b>	14	2	1			17	47	41	40



**POSTGRADUATE TAUGHT COURSE FRESHER STUDENTS: DOMICILES 2012/13 - 2015/16**  
**On-campus - Scotland (ranked by population size)**

Academic year of entry	2015/16 Total	2014/15 Total	2013/14 Total	2012/13 Total
<b>UNIVERSITY TOTAL</b>	<b>1,238</b>	<b>1,254</b>	<b>1,264</b>	<b>1,279</b>
<b>UK</b>	<b>340</b>	<b>262</b>	<b>326</b>	<b>288</b>
Scotland	260	207	248	178
Rest of UK	80	55	78	110
<b>EU</b>	<b>250</b>	<b>271</b>	<b>275</b>	<b>309</b>
Germany	59	68	58	68
Greece	52	55	74	127
France	40	44	53	35
Italy	24	15	16	4
Spain	21	23	26	21
Ireland	9	13		
Poland	6	4	8	11
Finland	6	1	2	2
Austria	5	6	2	6
Portugal	5	1	4	2
Other EU	23	41	32	33
<b>Overseas non-EU</b>	<b>648</b>	<b>721</b>	<b>658</b>	<b>701</b>
China	268	302	248	312
India	37	34	44	38
Thailand	30	41	37	46
Malaysia	21	33	36	27
Oman	21	12	6	13
U.S.A.	19	20	27	16
Nigeria	17	33	40	36
Saudi Arabia	16	20	17	7
Ghana	13	13	12	17
Kazakhstan	12	20	10	23
Russia	12	6	11	5
Taiwan	12	7	4	12
Canada	10	8	11	9
Other Overseas non-EU	160	172	155	140

Figures exclude small numbers of Edinburgh Business School fresher students.

**POSTGRADUATE RESEARCH FRESHER STUDENTS: DOMICILES 2012/13 - 2015/16**  
**On-campus - Scotland (ranked by population size)**

Academic year of entry	2015/16	2014/15	2013/14	2012/13
<b>UNIVERSITY TOTAL</b>	<b>183</b>	<b>167</b>	<b>156</b>	<b>145</b>
<b>UK</b>	<b>100</b>	<b>72</b>	<b>62</b>	<b>73</b>
Scotland	61	55	47	32
Rest of UK	39	17	15	41
<b>EU</b>	<b>35</b>	<b>34</b>	<b>30</b>	<b>22</b>
Spain	8	6	5	3
Italy	8	5	5	1
Germany	5	7	3	2
Greece	2	5	3	9
Netherlands	2	2	1	
France	2	3		1
Other EU	8	6	13	3
<b>Overseas non-EU</b>	<b>48</b>	<b>59</b>	<b>64</b>	<b>50</b>
Saudi Arabia	4	8	1	2
China	4	6	6	8
India	4	5	4	2
Iran	3	4	4	4
Pakistan	3	2	2	
Other Overseas non-EU	30	34	47	34

**NON-UK DOMICILED STUDENTS (UG, PGT, PGR) BY COUNTRY: 2011/12 - 2015/16**  
On-campus - Scotland

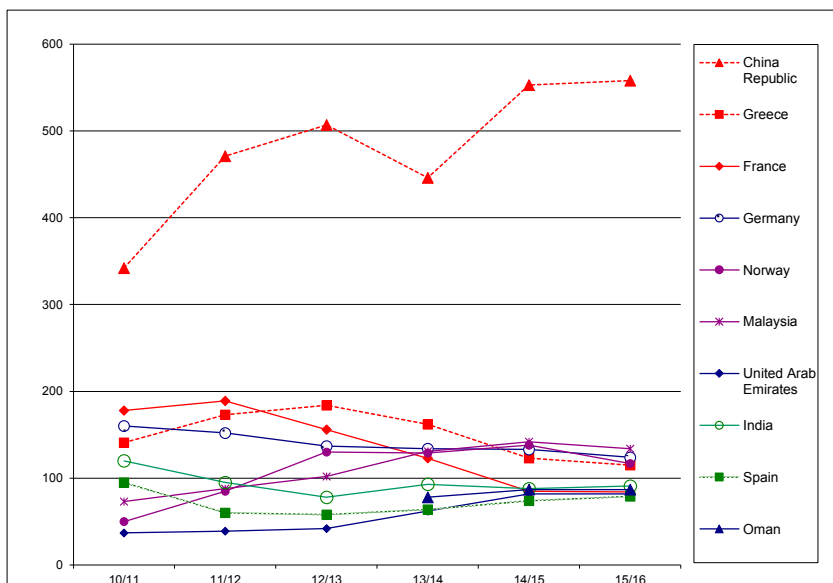
CONTINENT/COUNTRY	2015/16	%	2014/15	%	2013/14	%	2012/13	%	2011/12	%
<b>UNIVERSITY TOTAL</b>	<b>2,690</b>	<b>100</b>	<b>2,457</b>	<b>100</b>	<b>2,745</b>	<b>100</b>	<b>2,435</b>	<b>100</b>	<b>2,686</b>	<b>100</b>
China	558	21	533	22	446	16	507	21	471	18
Malaysia	134	5	142	6	131	5	102	4	88	3
Germany	123	5	133	5	134	5	137	6	152	6
Norway	116	4	138	6	129	5	130	5	85	3
Greece	115	4	123	5	162	6	184	8	173	6
India	91	3	88	4	93	3	78	3	95	4
Oman	87	3	87	4	78	3	50	2	24	1
France*	84	3	85	3	123	4	156	6	189	7
UAE	82	3	82	3	62	2	42	2	39	1
Spain	79	3	74	3	64	2	58	2	60	2
Italy	76	3	62	3	60	2	45	2	45	2
Nigeria	66	2	91	4	94	3	77	3	91	3
Saudi Arabia	62	2	73	3	78	3	89	4	120	4
USA	46	2	44	2	49	2	31	1	32	1
Thailand	44	2	56	2	52	2	57	2	74	3
Poland	36	1	46	2	45	2	55	2	56	2
Ireland	35	1	51	2	68	2	66	3	96	4
Cyprus	32	1	45	2	38	1	38	2	26	1
Iran	32	1	31	1	33	1	30	1	41	2
Kazakhstan	30	1	42	2	33	1	44	2	60	2
Russia	30	1	24	1	26	1	21	1	19	1
Lithuania	27	1	49	2	56	2	54	2	51	2
Hong Kong	26	1	26	1	19	1	25	1	18	1
Libya	24	1	20	1	24	1	24	1	47	2
Canada	24	1	19	1	19	1	16	1	8	~
Bulgaria	23	1	31	1	37	1	31	1	24	1
Netherlands	20	1	24	1	20	1	10	~	15	1
Sweden	20	1	15	1	16	1	21	1	28	1
Pakistan	18	1	22	1	26	1	21	1	24	1
Ghana	18	1	18	1	19	1	21	1	26	1
Switzerland	18	1	18	1	19	1	18	1	8	~
South Africa	18	1	11	~	11	~	~	~	5	~
Qatar	16	1	13	~	11	~	9	~	7	~
Portugal	16	1	12	~	13	~	6	~	8	~
Indonesia	16	1	9	~	11	~	15	1	8	~
Latvia	15	1	24	1	24	1	28	1	23	1
Egypt	15	1	15	1	15	1	12	1	8	~
Azerbaijan	15	1	14	1	7	~	~	~	3	~
Finland	14	1	20	1	26	1	27	1	23	1
Turkey	14	1	~	~	7	~	~	~	6	~
Hungary	13	~	15	1	15	1	8	~	6	~
Kuwait	13	~	13	~	16	1	13	1	9	~
Taiwan	13	~	9	~	6	~	~	~	19	1
Romania	13	~	10	~	10	~	8	~	9	~
<b>OTHER EUROPE</b>	<b>75</b>									
<b>OTHER AFRICA</b>	<b>76</b>									
<b>OTHER ASIA</b>	<b>93</b>									
<b>OTHER AMERICAS</b>	<b>71</b>									
<b>OTHER AUSTRALIA</b>	<b>8</b>									

Percentages are expressed as a proportion of the non-UK total.  
Top 10 domiciles by population size are highlighted in each year prior to 2015/16.  
UK dependent countries are not included.

\*Including any French dependencies.

Grouped 'other' data by continent is reported for 2014/15 and earlier years in the relevant annual publications for each year.  
Inclusions/exclusions detailed on page 5 apply. Note that total non-UK numbers in this report will not match exactly those indicated on page 5 which assigns students to 'other EU' and 'overseas' categories on the basis of the 'fees status' assigned to the student.

**Top 10 domiciles by population size (on-campus students studying in Scotland): trends 2010/11 - 2015/16**



ALL TRANSNATIONAL DEGREE PROGRAMME STUDENTS BY MODE OF STUDY AND DOMICILE ACTIVE IN THE HESA REPORTING YEAR 2014/15

	EGIS			EPS			SLS			MACS			SML			IPE			TEX			EBS			TOTALS		
	ALP	IDL	TOT	ALP	IDL	TOT	ALP	IDL	TOT	ALP	IDL	TOT	ALP	IDL	TOT	ALP	IDL	TOT	ALP	IDL	TOT	ALP	IDL	TOT	ALP	IDL	TOT
	769	809	1,578	322	89	411	125	186	311	553	32	1,886	222	1,003	1,225	47	47	47	3,956	2,684	6,622	7,650	4,783	12,433	404	324	728
United Kingdom	12	283	275	23	23	46	4	62	62	338	4	342	243	243	243	47	47	47	1,188	22	1,210	1,450	38	1,488	1,188	22	1,210
Trinidad & Tobago	84	5	89							174		174															
South Africa	14	14	28							520		520															
Singapore	460	6	466							42		42															
Egypt	15	15	30																								
Nigeria	58	58	116							6		6															
Uganda	4	4	8																								
Bangladesh										300		300															
Canada	17	17	34																								
Greece	40	2	42	100	2	102	2	2	2	4		4															
Azerbaijan	6	6	12	222																							
USA	15	15	30																								
Hong Kong	56	7	63							111		111															
Zambia	7	7	14																								
Jamaica	65	3	68							40		40															
Norway	7	7	14																								
Norway	7	7	14																								
Malurtius	6	6	12																								
Australia	26	26	52																								
Ukraine																											
United Arab Emirates	54	54	108							16		16															
Switzerland	5	5	10																								
Malaysia	24	10	34																								
Germany	3	3	6																								
Russia	2	2	4																								
Ireland	35	35	70																								
China	3	3	6																								
Malta	4	4	8																								
Saudi Arabia	18	18	36																								
India	12	12	24																								
Kenya	1	1	2																								
Zimbabwe	3	3	6																								
Sweden	2	2	4																								
Catar	37	37	74																								
Sri Lanka	6	6	12																								
Portugal																											
Ghana	10	10	20																								
Maldives																											
Oman	19	19	38																								
Mexico	2	2	4																								
Pakistan	12	12	24																								
Jordan	1	1	2																								
Boswana	15	15	30																								
Bahrain	28	3	31																								
Iran	3	3	6																								
Denmark	4	4	8																								
Kuwait	8	8	16																								
France	1	1	2																								
Malawi	1	1	2																								
Spain	2	2	4																								
Syria																											
Tanzania																											
Ethiopia	2	2	4																								
<b>OTHER AFRICA</b>	7	7	14																								
<b>OTHER AMERICAS</b>	16	16	32																								
<b>OTHER ASIA</b>	23	23	46																								
<b>OTHER AUSTRALIA</b>	5	5	10																								
<b>OTHER EUROPE</b>	19	19	38																								

Notes: ALP = Study with an Approved Learning Partner IDL = Study by Independent Distance Learning.

Student numbers include students registered on degree courses who were active in the HESA defined reporting year from 1 August 2014 to 31 July 2015.

The above figures do not include a substantial number of students who have commenced study with Edinburgh Business School but who have not yet applied for matriculation to the full degree course.

APPROVED LEARNING PARTNERS DEGREE PROGRAMME STUDENTS 2014/15

	ALP	SLS	EGIS	EPS	MACS	SML	TEX	IFE	EBS	Total
<b>UNIVERSITY TOTAL</b>		<b>125</b>	<b>824</b>	<b>267</b>	<b>553</b>	<b>1,654</b>	<b>47</b>	<b>222</b>	<b>3,958</b>	<b>7,650</b>
Australia	University of Queensland*							49		49
Azerbaijan	Baku Higher Oil School*			201						201
	TTE Petrofac Ltd			21				29		50
<b>Azerbaijan Total</b>										<b>251</b>
Bahrain	Bahrain Training Institute		28							28
Bangladesh	BiMS College					300				300
China	Tianjin University of Science & Technology*	50								50
	University of Petroleum, East China							16		16
<b>China Total</b>										<b>66</b>
Costa Rica	Universidad Para la Cooperacion Internacional								3	3
Cyprus	Frederick Institute of Technology				1					1
Denmark	Fokus								3	3
Egypt	Ain Shams University								33	33
Egypt	American University in Cairo								428	428
Germany	Corporate Coaching Institute								55	55
Greece	iCon Training International Ld		40						122	162
	Technological Educational Institute of Athens*		32							32
	Technological Educational Institute of Piraeus*		23	45						68
<b>Greece Total</b>										<b>262</b>
Hong Kong	Cyber University								26	26
	Hong Kong - Continuous Professional Education		40							40
	Hong Kong College of Engineering		16							16
	Hong Kong University School of Professional and Continuing Education								11	11
	The Hong Kong Poly University					111			1	112
<b>Hong Kong Total</b>										<b>205</b>
Iran	ICTEC (Tehran)				1				2	3
Ireland	Griffith College								42	42
Israel	Ramat-Gan College								5	5
Jamaica	B&B University College Ltd	15	65			40			91	211
Jordan	Al-Ahliyya Amman University*								19	19
Malaysia	Imperia Institute of Technology		24							24
Maldives	Clique College					62				62
Mauritius	Glamis Business School					27			157	184
Mexico	Escuela Bancaria y Comercial*								32	32
Nigeria	Executive Development Centre								62	62
Norway	Hoyskolen Kristiania Nettstudier								170	170
Portugal	IsPG Instituto do Petroleo e Gas (GALP) Lisbon							42		42
Russia	Gubkin Russian State University							8		8
	Tomsk Polytechnic University							78		78
<b>Russia Total</b>										<b>86</b>
Serbia	English School of Business Belgrade	5							16	21
Singapore	Ascensia Academy								13	13
	EASB East Asia Institute of Management								117	117
	Trent Global College of Technology and Management		460							460
	Uptrend Education Pte Ltd	9				42				51
<b>Singapore Total</b>										<b>641</b>
South Africa	CTI (various campuses)				551	520				1,071
Sri Lanka	Oxford College of Business	42				19				61
	Saegis Campus (Private) Ltd					5				5
<b>Sri Lanka Total</b>										<b>66</b>
Swaziland	Mananga Centre For Regional Integration and Management Development								2	2
Sweden	Executive Management Institute								66	66
Switzerland	FHNW University of Applied Sciences*								105	105
Trinidad & Tobago	School of HE Ltd (San Fernando)	4	84			109				197
	School of HE Ltd (San Juan)					65				65
	School of Business and Computer Science								1,188	1,188
<b>Trinidad &amp; Tobago Total</b>										<b>1,450</b>
Uganda	Management and Accountancy Training Co.Ltd								349	349
Ukraine	Institute of Political Science								162	162
United Arab Emirates	Dubai (ALP)					16				16
United Kingdom	Fife College		12							12
USA	Network of Excellence in Training (NExT)								103	103
Zambia	Zambian Institute for Capacity Building (ZICAB)								171	171

\*Note: asterisked partners are collaborative partners rather than ALPs but students are located with the partner for the duration of their studies.

CONVERSION RATES OF UNDERGRADUATE APPLICATIONS TO ENTRANTS 2011 - 2015 ENTRY

UK/EU Applicants

SCHOOL/Programme	Applications					Entrants					Conversion Apps to Entrants %				
	2015	2014	2013	2012	2011	2015	2014	2013	2012	2011	2015	2014	2013	2012	2011
<b>UNIVERSITY TOTAL</b>	<b>12,549</b>	<b>12,098</b>	<b>12,076</b>	<b>10,822</b>	<b>9,495</b>	<b>1,601</b>	<b>1,571</b>	<b>1,916</b>	<b>1,542</b>	<b>1,634</b>	<b>13</b>	<b>13</b>	<b>16</b>	<b>14</b>	<b>17</b>
<b>ENERGY, GEOSCIENCE, INFRASTRUCTURE &amp; SOCIETY</b>	<b>1,287</b>	<b>1,050</b>	<b>908</b>	<b>859</b>	<b>1,040</b>	<b>212</b>	<b>233</b>	<b>179</b>	<b>206</b>	<b>211</b>	<b>16</b>	<b>22</b>	<b>20</b>	<b>24</b>	<b>20</b>
Architectural Engineering	193	163	146	159	151	22	30	30	34	28	11	18	21	21	19
Civil Engineering	671	591	520	466	550	100	124	92	116	95	15	21	18	25	17
Construction Management & Surveying	198	171	176	177	241	40	43	34	35	58	20	25	19	20	24
Urban Studies	225	125	66	57	98	50	36	23	21	30	22	29	35	37	31
<b>ENGINEERING &amp; PHYSICAL SCIENCES</b>	<b>3,888</b>	<b>3,860</b>	<b>3,507</b>	<b>2,948</b>	<b>2,556</b>	<b>399</b>	<b>367</b>	<b>451</b>	<b>436</b>	<b>429</b>	<b>10</b>	<b>10</b>	<b>13</b>	<b>15</b>	<b>17</b>
Chemical Engineering	998	994	766	515	432	89	71	98	83	85	9	7	13	16	20
Chemistry	723	694	710	621	469	78	73	90	92	78	11	11	13	15	17
Combined Studies (BSc)	38	48	57	53	64	8	7	9	7	12	21	15	16	13	19
Electrical, Electronic & Computer Engineering	386	388	400	332	300	63	50	67	65	62	16	13	17	20	21
Mechanical Engineering	1,106	1,105	972	873	787	82	85	83	102	112	7	8	9	12	14
Physics	540	514	495	453	401	69	65	87	73	64	13	13	18	16	16
BEng Engineering	97	117	107	101	103	10	16	17	14	16	10	14	16	14	16
<b>LIFE SCIENCES</b>	<b>1,636</b>	<b>1,701</b>	<b>1,813</b>	<b>1,634</b>	<b>1,258</b>	<b>192</b>	<b>240</b>	<b>345</b>	<b>131</b>	<b>230</b>	<b>12</b>	<b>14</b>	<b>19</b>	<b>8</b>	<b>18</b>
Biological Sciences	766	790	859	681	555	102	112	163	65	138	13	14	19	10	25
Psychology	870	911	954	953	703	90	128	182	66	92	10	14	19	7	13
<b>MANAGEMENT &amp; LANGUAGES</b>	<b>3,186</b>	<b>2,920</b>	<b>3,325</b>	<b>3,121</b>	<b>2,384</b>	<b>410</b>	<b>322</b>	<b>494</b>	<b>390</b>	<b>422</b>	<b>13</b>	<b>11</b>	<b>15</b>	<b>12</b>	<b>18</b>
Accountancy & Finance	691	641	630	624	532	108	92	112	81	93	16	14	18	13	17
Economics	404	345	485	511	283	58	34	72	64	59	14	10	15	13	21
Languages	656	684	594	568	456	100	87	133	101	122	15	13	22	18	27
Management	1,435	1,249	1,376	1,238	931	144	109	163	122	112	10	9	12	10	12
Management (Scottish Borders Campus)	1	240	180	182		14	22	36			6	12	20		
<b>MATHEMATICAL &amp; COMPUTER SCIENCES</b>	<b>1,762</b>	<b>1,624</b>	<b>1,438</b>	<b>1,176</b>	<b>1,151</b>	<b>225</b>	<b>240</b>	<b>239</b>	<b>190</b>	<b>152</b>	<b>13</b>	<b>15</b>	<b>17</b>	<b>16</b>	<b>13</b>
Actuarial Mathematics & Statistics	302	298	271	253	267	55	76	66	60	46	18	26	24	24	17
Computer Science	802	664	600	413	412	73	66	87	47	53	9	10	15	11	13
Mathematics	658	662	567	510	472	97	98	86	83	53	15	15	15	16	11
<b>TEXTILES &amp; DESIGN</b>	<b>790</b>	<b>943</b>	<b>1,085</b>	<b>1,084</b>	<b>1,106</b>	<b>163</b>	<b>169</b>	<b>208</b>	<b>189</b>	<b>190</b>	<b>21</b>	<b>18</b>	<b>19</b>	<b>17</b>	<b>17</b>

Overseas Applicants

SCHOOL/Programme	Applications					Entrants					Conversion Apps to Entrants %				
	2015	2014	2013	2012	2011	2015	2014	2013	2012	2011	2014	2014	2013	2012	2011
<b>UNIVERSITY TOTAL</b>	<b>1540</b>	<b>1375</b>	<b>1396</b>	<b>1161</b>	<b>946</b>	<b>213</b>	<b>261</b>	<b>287</b>	<b>228</b>	<b>208</b>	<b>14</b>	<b>19</b>	<b>21</b>	<b>20</b>	<b>22</b>
<b>ENERGY, GEOSCIENCE, INFRASTRUCTURE &amp; SOCIETY</b>	<b>165</b>	<b>128</b>	<b>150</b>	<b>98</b>	<b>103</b>	<b>13</b>	<b>49</b>	<b>41</b>	<b>14</b>	<b>18</b>	<b>8</b>	<b>38</b>	<b>27</b>	<b>14</b>	<b>17</b>
Architectural Engineering	25	19	37	20	17	5	2	6	4	4	20	11	16	20	24
Civil Engineering	79	66	59	56	52	5	41	34	8	8	6	62	58	14	15
Construction Management & Surveying	45	34	43	17	26	1	4	1	1	2	2	12	2	6	8
Urban Studies	16	9	11	5	8	2	2		1	4	13	22		20	50
<b>ENGINEERING &amp; PHYSICAL SCIENCES</b>	<b>394</b>	<b>355</b>	<b>377</b>	<b>217</b>	<b>205</b>	<b>21</b>	<b>32</b>	<b>64</b>	<b>41</b>	<b>28</b>	<b>5</b>	<b>9</b>	<b>17</b>	<b>19</b>	<b>14</b>
Chemical Engineering	160	167	163	75	70	7	13	30	13	14	4	8	18	17	20
Chemistry	21	24	17	16	17	2	6		4	2	10	25		25	12
Combined Studies (BSc)	2		5	3	2	0		1						20	
Electrical, Electronic & Computer Engineering	61	35	64	26	35	3	4	10	2	3	5	11	16	8	9
Mechanical Engineering	121	108	106	70	66	8	7	22	18	6	7	6	21	26	9
Physics	18	11	13	21	11	1	2		2	3	6	18		10	27
BEng Engineering	11	10	9	6	4	0		1	2					11	33
<b>LIFE SCIENCES</b>	<b>71</b>	<b>87</b>	<b>82</b>	<b>79</b>	<b>63</b>	<b>12</b>	<b>14</b>	<b>16</b>	<b>19</b>	<b>12</b>	<b>17</b>	<b>16</b>	<b>20</b>	<b>24</b>	<b>19</b>
Biological Sciences	35	46	41	36	40	6	7	10	11	6	17	15	24	31	15
Psychology	36	41	41	43	23	6	7	6	8	6	17	17	15	19	26
<b>MANAGEMENT &amp; LANGUAGES</b>	<b>468</b>	<b>412</b>	<b>414</b>	<b>398</b>	<b>295</b>	<b>95</b>	<b>81</b>	<b>83</b>	<b>83</b>	<b>87</b>	<b>20</b>	<b>20</b>	<b>20</b>	<b>21</b>	<b>29</b>
Accountancy & Finance	124	146	105	79	81	27	37	25	16	23	22	25	24	20	28
Economics	74	65	69	93	43	19	5	11	24	16	26	8	16	26	37
Languages	21	17	8	19	6	3	1	1	1	1	14	6	13	5	17
Management	249	184	207	180	127	46	38	45	42	45	18	21	22	23	35
Management (Scottish Borders Campus)			25	27	38			1		2				4	5
<b>MATHEMATICAL &amp; COMPUTER SCIENCES</b>	<b>404</b>	<b>339</b>	<b>333</b>	<b>318</b>	<b>241</b>	<b>68</b>	<b>76</b>	<b>77</b>	<b>62</b>	<b>56</b>	<b>17</b>	<b>22</b>	<b>23</b>	<b>19</b>	<b>23</b>
Actuarial Mathematics & Statistics	296	243	244	241	180	55	52	60	48	41	19	21	25	20	23
Computer Science	50	38	39	30	29	5	11	5	2	8	10	29	13	7	28
Mathematics	58	58	50	47	32	8	13	12	12	7	14	22	24	26	22
<b>TEXTILES &amp; DESIGN</b>	<b>38</b>	<b>54</b>	<b>40</b>	<b>51</b>	<b>39</b>	<b>4</b>	<b>9</b>	<b>6</b>	<b>9</b>	<b>7</b>	<b>11</b>	<b>17</b>	<b>15</b>	<b>18</b>	<b>18</b>

FIRST DEGREES & OTHER AWARDS: 2013 - 2015 - Scottish Campus

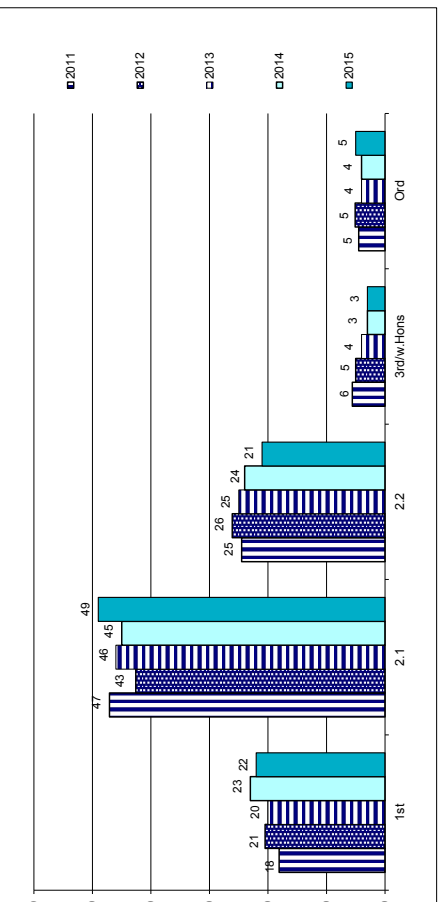
SCHOOL/Programme	2015										2014										2013																											
	EFD			Honours			%EFD, % 1,2,1 1,2,1			Ord			Yr3			Yr4			3rd			2.2			%EFD, % 1,2,1 1,2,1			Ord			Yr3			Yr4			3rd			2.2			%EFD, % 1,2,1 1,2,1			Total		
	1st	2.1	HE	1st	2.1	HE	1st	2.1	HE	1st	2.1	HE	1st	2.1	HE	1st	2.1	HE	1st	2.1	HE	1st	2.1	HE	1st	2.1	HE	1st	2.1	HE	1st	2.1	HE	1st	2.1	HE	1st	2.1	HE	1st	2.1	HE	1st	2.1	HE	1st	2.1	HE
<b>UNIVERSITY TOTAL</b>	165	239	529	75	71	58	27	2	8	1	37	9	136	65	1,516	190	210	421	73	68	225	32	41	147	126	58	1,450	162	212	482	71	66	267	47	41	124	93	56	1,994									
<b>ENERGY, GEOSCIENCE, INFRASTRUCTURE &amp; SOCIETY</b>	39	13	39	71	58	27	2	8	1	37	9	136	65	1,516	190	210	421	73	68	225	32	41	147	126	58	1,450	162	212	482	71	66	267	47	41	124	93	56	1,994										
Architectural Engineering	4	2	4	63	50	6					4	3	23		3	3	64	55	5			2	1	1	1	18	6	2	13	78	71	5	1	1	1	2	30											
Built Environment (General)													9		3	3	64	55	5			2	1	1	1	1	18	6	2	13	78	71	5	1	1	1	2	30										
Civil Engineering	35	1	9	75	40	9	6				16	3	79		49	4	9	77	41	17	1	1	1	1	1	9	96	45	2	7	89	56	5	1	1	4	4	70										
Construction Management & Surveying	5	15	67	67	8	1	1	1	1	5	2	38		4	6	25	69	69	9	2	3	2	1	4	4	52	3	30	60	60	20	2	1	4	3	63												
Urban Studies	5	11	73	73	4	1	1	1	1	3	1	26		4	4	23	73	73	6	2	1	1	1	4	4	28	7	14	81	81	5	5	1	4	2	28												
<b>ENGINEERING &amp; PHYSICAL SCIENCES</b>	117	23	41	69	44	51	13	13	13	9	29	15	316	138	138	13	41	74	46	46	11	7	43	41	17	317	104	23	34	70	46	46	15	7	39	29	13	310										
Chemical Engineering	36	4	63	15	16	5	2	3	3	2	65		31	2	59	8	15	6	2	1	1	1	1	1	1	61	24	4	55	15	19	3	1	2	2	55												
Chemistry	16	4	65	27	7	2	2	3	3	9	4	43		24	1	70	36	8	1	1	1	1	1	1	1	7	60	19	4	76	50	4	2	1	14	9	53											
Electrical, Electronic & Comp Eng	18	7	4	76	55	3	1	5	3	3	1	46		12	4	77	67	4	3	2	2	5	7	2	4	41	7	1	4	71	50	3	2	6	7	30												
Mechanical Engineering	40	11	21	73	55	20	3	3	3	5	2	105		39	6	21	79	60	14	2	2	5	7	1	1	97	42	14	19	76	61	15	4	2	5	6	112											
Physics	7	4	7	75	65	4	1	1	1	6	4	34		22	2	5	65	56	3	2	2	2	8	3	5	50	13	2	3	72	42	4	3	2	4	3	34											
Combined Studies (BS&BEEng)	1	1	1	22	22	1	1	1	1	3	6	6	24		2	2	50	50	2	1	1	2	2	2	2	4	38	2	1	38	38	1	1	3	12	2	4	28										
<b>LIFE SCIENCES</b>	32	106	78	78	25	2	12	4	27	12	220		220	28	73	72	72	33	1	5	10	9	16	16	16	174	15	76	64	64	41	4	6	7	14	6	169											
Biology	16	57	76	76	14	2	7	3	14	7	120		120	14	33	66	66	21	1	2	4	5	9	9	9	89	7	28	52	52	22	4	6	1	7	3	78											
Psychology	16	48	80	80	11	5	1	13	5	99		99	12	33	63	63	83	7	2	5	4	5	4	5	4	68	2	32	71	71	14	4	1	6	3	58												
Spot & Exercise Science	1	100	100							1			1	2	7	60	60	5	1	1	1	1	1	1	1	17	6	16	81	81	5	1	5	1	6	3	33											
<b>MANAGEMENT &amp; LANGUAGES</b>	69	216	81	81	52	3	13	37	19	15	424		424	58	131	76	76	46	2	13	65	24	11	350	54	183	71	71	71	74	10	13	52	21	13	420												
Accountancy & Finance	19	68	81	81	18	2	14	4	6	131		131	18	25	70	70	14	4	19	6	1	19	6	1	87	14	60	77	77	18	4	11	3	1	111													
Economics	11	39	93	93	4	10	5	5	74		74	7	19	93	93	1	1	9	6	3	46	6	3	46	6	90	1	32	22	68	68	14	6	6	7	3	6											
Languages	14	39	71	71	18	2	2	4	1	80		80	11	37	73	73	15	1	2	3	4	3	4	3	76	13	29	65	65	19	2	2	5	2	58													
Management	25	65	86	86	9	6	6	5	1	117		117	22	44	79	79	12	1	5	23	7	4	4	118	18	65	73	73	25	4	2	15	6	2	72													
Management (Scottish Borders Campus)										6		6																																				
Combined Studies (BA)	5	42	42	3	1	3	1	3	1	2	16		16	6	55	55	4	1	5	1	5	1	5	1	16	2	2	17	17	5	3	2	8	1	13	1	15											
<b>MATHEMATICAL &amp; COMP SCIENCES</b>	9	73	60	79	78	30	6	2	1	17	6	204		204	10	68	76	75	29	10	8	7	35	2	293	7	70	71	74	73	32	41	8	13	10	10	233											
Actuarial Mathematics & Statistics	36	20	77	77	15	2	4	3	80		80	3	4	35	25	75	75	14	5	1	3	6	1	90	1	32	22	68	68	14	6	6	7	3	6	97												
Computer Science	6	15	18	83	80	4	2	2	5	1	53		53	6	11	24	29	76	5	1	3	5	5	1	60	6	8	19	67	63	10	4	2	4	9	6	63											
Mathematics	3	22	22	78	77	11	2	1	8	2	71		71	4	22	21	79	73	10	5	1	1	14	1	79	30	30	87	87	8	1	2	1	2	1	4	4											
<b>TEXTILES &amp; DESIGN</b>	28	67	67	67	36	6	5	18	7	8	177		177	26	54	66	66	34	4	3	13	16	2	16	3	156	36	64	68	68	39	6	3	11	10	10	3	170										
Textiles & Design	28	67	67	67	36	6	5	18	7	8	177		177	26	54	66	66	34	4	3	13	16	2	16	3	156	36	64	68	68	39	6	3	11	10	10	3	170										
Combined Studies										1		1		1	50	50									5																							

Notes: EFD = Enhanced First Degree. % EFD, 1st, 2.1 provides the percentage of combined EFD/12.1 degree awards against the total combined EFD and Honours (4 year) awards.  
 % 1, 2.1 provides the percentage of combined 1st and 2.1 degree awards against the total Honours (4 year) awards.

FIRST DEGREES AND OTHER AWARDS (INTERNATIONAL PROGRAMMES) 2013 - 2015

SCHOOL/Programme	2015			2014			2013		
	Ord	Other	Total	Ord	Other	Total	Ord	Other	Total
<b>UNIVERSITY TOTAL</b>	1,569	37	29	1,635	1,831	1,297			
<b>ENERGY, GEOSCIENCE, INFRASTRUCTURE &amp; SOCIETY</b>	244	244	339	485					
Architectural Engineering	2	2	12	6					
Construction Management & Surveying	242	242	322	454					
Urban Studies			5	25					
<b>ENGINEERING &amp; PHYSICAL SCIENCES</b>	4	4							
Chemical Engineering	4	4							
<b>LIFE SCIENCES</b>	10	10	7	1					
Psychology	10	10	7	1					
<b>MANAGEMENT &amp; LANGUAGES</b>	860	33	29	922	870	690			
Accountancy & Finance	2	1	3						
Management	59	2	1	62	870	690			
Management Programme	799	31	27	857					
<b>MATHEMATICAL &amp; COMP SCIENCES</b>	436	436	600	112					
Computer Science	436	436	600	112					
<b>TEXTILES &amp; DESIGN</b>	19	19	15						

Degree Classifications 2011 - 2015 (% of total) (excludes enhanced first degrees) - Scottish Campus





HIGHER DEGREES AND OTHER AWARDS: 2013 - 2015 - Scottish Campus

SCHOOL/Programme	2015							2014							2013									
	PhD & Engd	MPhil	Taught Master	PgDip	PgCert	Total	PhD & Engd	MPhil	Taught Master	PgDip	PgCert	Total	PhD & Engd	MPhil	Taught Master	PgDip	PgCert	Total	PhD & Engd	MPhil	Taught Master	PgDip	PgCert	Total
<b>UNIVERSITY TOTAL</b>	147	5	1,109	60	101	1,422	88	2	1,103	90	85	1,368	93	3	1,050	94	91	1,331	93	3	1,050	94	91	1,331
<b>ENERGY, GEOSCIENCE, INFRASTRUCTURE &amp; SOCIETY</b>	39		364	12	58	473	21	1	321	28	63	434	23		328	27	52	428	23		328	27	52	428
Architectural Engineering			25		1	26			16	1	1	18			20		1	21			20		1	21
Civil Engineering	4		54	2	2	62	5		47	5	3	60	3		50	4	3	37	3		50	5	3	37
Construction Management & Surveying	7		45	1	4	57	6		50	2		58	6		50	5	1	62	6		50	5	1	62
Petroleum Engineering	17		191	5	50	263	8	1	154	15	58	236	11		174	8	43	236	11		174	8	43	236
Urban Studies	11		49	4	1	65	2		54	5	1	62	3		55	10	4	72	3		55	10	4	72
<b>ENGINEERING &amp; PHYSICAL SCIENCES</b>	63	5	124	4	1	197	41	1	153	2	2	199	37	2	150	3	1	193	37	2	150	3	1	193
Chemical Engineering	5		14			19	4		11			15	3		8			11	3		8			11
Chemistry	11	1	7			19	7		13			20	4	1	9	1		15	4	1	9	1		15
Electrical, Electronic & Computer Engineering	8	3	43	1		55	5	1	57		1	64	5		38	1		44	5		38	1		44
Mechanical Engineering	18		53	3	1	75	5		61	2	1	69	11	1	87	1		100	11	1	87	1		100
Physics	21	1	7			29	20		11			31	14		8	1		23	14		8	1		23
<b>LIFE SCIENCES</b>	11		128	6	5	150	8		102	8		118	9		107	10	4	130	9		107	10	4	130
Biology	9		109	1	2	121	6		81	2		89	7		77	5	2	91	7		77	5	2	91
Life Sciences General	1					1	1					1	1					1	1					1
Psychology	1		19	5	3	28	1		21	6		28	1		30	5	2	38	1		30	5	2	38
<b>MANAGEMENT &amp; LANGUAGES</b>	10		362	22	2	396	4		387	40	12	443	7		318	42	8	375	7		318	42	8	375
Accountancy and Finance	3		81	4		88	2		102	14	2	120	2		84	6	1	93	2		84	6	1	93
Economics	1		44	8	1	56			61	6		67	4		34	6		4	4		34	6		4
Languages	3		237	10	1	251	2		224	20	10	256	1		200	30	7	238	1		200	30	7	238
<b>MATHEMATICAL &amp; COMPUTER SCIENCES</b>	22		117	16	5	160	13		115	9	6	143	10		131	11	5	157	10		131	11	5	157
Actuarial Mathematics & Statistics	3		61	11	1	76	2		52	6	4	64	1		75	8	1	85	1		75	8	1	85
Computer Science	8		40	4	1	53	6		41	2	1	50	6		38	3		50	6		38	3		50
Mathematics	11		16	1	3	31	5		22	1	1	29	3		18	1		22	3		18	1		22
<b>ACADEMIC LEARNING AND DEVELOPMENT</b>					30	30					2	2						20						20
<b>TEXTILES &amp; DESIGN</b>	2		14			16	1		25	3		29	7	1	18	1		28	7	1	18	1		28

Notes: Small numbers of campus based and consortium MBA graduates are included in the external Edinburgh Business School programmes total below.

HIGHER DEGREES AND OTHER AWARDS - INTERNATIONAL PROGRAMMES\*: 2013 - 2015 (\*\*independent distance learners/ supported learners through ALP network)

SCHOOL/Programme	2015							2014							2013											
	PhD & DBA	Taught Master	PgDip	Pg Cert	Total	PhD & DBA	Taught Master	PgDip	Pg Cert	Total	PhD & DBA	Taught Master	PgDip	Pg Cert	Total	PhD & DBA	Taught Master	PgDip	Pg Cert	Total	PhD & DBA	Taught Master	PgDip	Pg Cert	Total	
<b>UNIVERSITY TOTAL</b>	10	1,374	70	76	1,530	13	1,029	71	138	1,251	16	1,398	51	55	1,520	16	1,398	51	55	1,520	16	1,398	51	55	1,520	
<b>ENERGY, GEOSCIENCE, INFRASTRUCTURE &amp; SOCIETY</b>		278	66	52	396		247	65	106	418		241	42	45	331		241	42	45	331		241	42	45	331	
Architectural Engineering		8	3		12		7	2	2	11		9	1	2	12		9	1	2	12		9	1	2	12	
Civil Engineering		66	11	8	85		42	7	19	68		41	5	11	57		41	5	11	57		41	5	11	57	
Construction Management & Surveying		109	26	9	144		98	21	33	152		81	24	32	137		81	24	32	137		81	24	32	137	
Petroleum Engineering		81	25	33	139		88	26	50	164		95	8		106		95	8		106		95	8		106	
Urban Studies		14	1		16		12	8	2	22		15	3		18		15	3		18		15	3		18	
Built Environment (general)					1			1		1					1					1					1	
<b>ENGINEERING &amp; PHYSICAL SCIENCES</b>		44	4	17	65		62		21	83		78	7		87		78	7		87		78	7		87	
Chemical Engineering				16	16				20	20					20					20					20	
Mechanical Engineering		44	4	1	49		62	1	1	63		78	7		87		78	7		87		78	7		87	
<b>LIFE SCIENCES</b>		15		2	17		12	6	9	27		10	7	7	20		10	7	7	20		10	7	7	20	
Biology		7		7	14		7	7	8	15		9	2	4	16		9	2	4	16		9	2	4	16	
Psychology		8		2	10		5	6	1	12		1	1	3	4		1	1	3	4		1	1	3	4	
<b>MATHEMATICAL &amp; COMPUTER SCIENCES</b>		2		2	4		2	2	1	3		1	1	2	4		1	1	2	4		1	1	2	4	
Computer Science		2		2	4		2	2	1	3		1	1	2	4		1	1	2	4		1	1	2	4	
<b>TEXTILES &amp; DESIGN</b>																										
<b>EDINBURGH BUSINESS SCHOOL (Masters/Doctorates)</b>	10	1,035		5	1,045	13	706		1	719	9	1,068			1,077											1,077
Academic Practice					5				1	1					3											3

**FIRST DEGREES AND OTHER AWARDS: 2013 - 2015 - Dubai Campus**

SCHOOL/Programme	2015						2014						2013						Total												
	Honours		% 1,2/		3rd		Ord from Hons		Ord Yr 3		Other Dip HE		Total		Honours		% 1,2/			3rd		Ord from Hons		Ord Yr 3		Other Cert HE Dip HE		Total			
	1st	2.1	2.1	2.2	2.2	3rd	Ord from Hons	Ord Yr 3	Other Cert HE Dip HE	Total	1st	2.1	2.1	2.2	2.2	3rd	Ord from Hons	Ord Yr 3		Other Cert HE Dip HE	Total	1st	2.1	2.1	2.2	2.2	3rd	Ord from Hons	Ord Yr 3	Other Cert HE Dip HE	Total
UNIVERSITY TOTAL	29	46	53	46	9	11	438	55	29	663	15	31	44	42	10	6	397	50	13	564	15	25	53	21	7	8	332	41	15	464	
ENERGY, GEOSCIENCE, INFRASTRUCTURE & SOCIETY	4	7	50	8	3	3	14	12	3	51	2	2	29	8	2	2	10	2	2	28	2	5	78	2		29	8	2	48		
Architectural Engineering																															
Civil Engineering	2	4	60	3	1	1	2	3	3	15										2	2							2	2	2	
Construction Management & Surveying	2	3	42	5	2	2	8	9	3	32	2	2	25	8	2	2	4	6	6	20	2	5	78	2		7	6	2	24		
ENGINEERING & PHYSICAL SCIENCES	17	19	55	19	5	5	58	17	9	149	13	21	51	24	7	2	75	10	2	154	10	10	50	9	3	8	45	5	95		
Electrical, Electronic & Computer Engineering	4	6	59	4	3	3	14	2	2	35	5	7	48	9	4	28	3	1	57	4	5	53	3	2	3	20	2	37			
Mechanical Engineering	13	13	54	15	2	5	26	4	2	80	8	14	52	15	3	2	41	4	1	88	6	5	50	6	1	4	24	5	56		
Combined Studies (BScBEng)							18	11	5	34							6	3	9							1	1	2	2		
LIFE SCIENCES	1	6	54	4	1	1	8	1	2	24							3	2	2	7											
Psychology	1	6	54	4	1	1	8	1	2	24							3	2	2	7											
MANAGEMENT & LANGUAGES	3	9	50	10	2	2	309	21	11	365	8	42	9	1	1	283	22	5	329	3	9	57	6	3		229	24	8	282		
Accountancy & Finance	2	7	60	5	1	1	126	4	2	147	6	75	2			119	8	1	136	3	5	67	4			91	10	1	114		
Management	1	2	33	5	1	1	183	17	9	218	2	18	7	1	1	164	14	4	193							138	14	7	168		
MATHEMATICAL & COMPUTER SCIENCES																															
Computer Science																															
TEXTILES & DESIGN	4	5	75	3	3	29	1	3	45								21	10	4	37											

**HIGHER DEGREES AND OTHER AWARDS: 2013 - 2015 - Dubai Campus**

SCHOOL/Programme	2015			2014			2013			Total	
	Taught Master	PgDip	PgCent	Taught Master	PgDip	PgCent	Taught Master	PgDip	PgCent		
UNIVERSITY TOTAL	422	89	49	386	96	43	525	259	58	28	345
ENERGY, GEOSCIENCE, INFRASTRUCTURE & SOCIETY	213	24	21	187	31	20	238	157	27	16	200
Civil Engineering	31	5	8	44	19	1	4	24	4	1	5
Construction Management & Surveying	120	14	10	144	101	19	134	99	14	13	126
Petroleum Engineering	47	4	2	53	55	10	66	47	10	57	
Urban Studies	15	1	1	17	12	1	14	7	3	2	12
ENGINEERING & PHYSICAL SCIENCES	63	3	4	70	48	2	1	51	29	1	30
Mechanical Engineering	63	3	4	70	48	2	1	51	29	1	30
LIFE SCIENCES	10	13	5	28	7	8	5	20	6	1	8
Psychology	10	13	5	28	7	8	5	20	6	1	8
MANAGEMENT & LANGUAGES	104	41	15	160	109	49	14	172	56	25	9
Accountancy and Finance	30	4	1	35	19	3	3	25	14	5	2
Management	74	37	14	125	90	46	11	147	42	20	7
MATHEMATICAL & COMPUTER SCIENCES	32	8	4	44	35	6	3	44	11	4	17
Computer Science	32	8	4	44	35	6	3	44	11	4	17

**FIRST DEGREES AND OTHER AWARDS 2015 - Malaysia Campus**

SCHOOL/Programme	2015		Total
	Dip HE	Found. Prog.	
UNIVERSITY TOTAL	1	58	59
MATHEMATICAL & COMPUTER SCIENCES	1	1	1
Actuarial Mathematics & Statistics	1	1	1
CROSS-UNIVERSITY	56	58	58

**HIGHER DEGREES AND OTHER AWARDS 2015 - Malaysia Campus**

SCHOOL/Programme	2015		Total
	Taught Master	Pg Dip	
UNIVERSITY TOTAL	12	1	13
ENERGY, GEOSCIENCE, INFRASTRUCTURE & SOCIETY	5	5	5
Construction Management & Surveying	2	2	2
Petroleum Engineering	3	3	3
ENGINEERING & PHYSICAL SCIENCES	4	1	5
Mechanical Engineering	4	1	5
LIFE SCIENCES	1	1	1
Psychology	1	1	1
MANAGEMENT & LANGUAGES	2	2	2
Management	2	2	2

UNDERGRADUATE STUDENT PROGRESSION: 2012/13 to 2015/16

ALL YEARS: On-campus - Scotland

SCHOOL: Programme	2014/15 to 2015/16				2013/14 to 2014/15				2012/13 to 2013/14				Total							
	Awarded degree/ or eligible for other qualification	% of total	Continuing as registered students in	Withdrawn from the University	Total	Awarded degree/ or eligible for other qualification	% of total	Continuing as registered students in	Withdrawn from the University	Total	Awarded degree/ or eligible for other qualification	% of total		Continuing as registered students in	Withdrawn from the University					
<b>UNIVERSITY TOTAL</b>	1,517	23	4,873	74	186	3	5,576	23	4,744	75	186	3	6,366	27	4,199	71	141	2	5,913	
<b>ENERGY, GEOSCIENCE, INFRASTRUCTURE &amp; SOCIETY</b>	150	19	594	77	28	4	772	28	509	68	28	4	744	26	538	71	20	3	758	
Architectural Engineering	21	18	93	78	5	4	119	17	79	77	6	6	103	34	31	70	63	7	111	
Civil Engineering	69	17	328	81	8	2	405	26	278	70	17	4	397	77	21	287	77	10	374	
Construction Management & Surveying	35	26	96	70	6	4	137	39	84	60	2	1	141	63	38	102	61	1	166	
Urban Studies	25	23	77	69	9	8	111	31	68	66	3	3	103	26	24	79	74	2	107	
<b>ENGINEERING &amp; PHYSICAL SCIENCES</b>	327	20	1,255	77	45	3	1,627	21	1,233	75	60	4	1,634	22	1,150	75	49	3	1,529	
Chemical Engineering	70	20	273	77	10	3	353	16	284	78	20	6	363	58	18	258	79	11	327	
Chemistry	47	18	212	79	9	3	268	23	198	75	6	2	264	55	23	181	74	8	344	
Combined Studies (BSc/BEng)	20	23	63	72	5	6	88	38	57	57	5	5	100	33	28	78	67	6	117	
Electrical, Electronic & Computer Engineering	44	19	181	78	6	3	231	39	170	77	11	5	220	34	18	152	79	6	192	
Mechanical Engineering	110	24	342	75	7	2	459	20	360	78	5	1	459	114	25	340	74	5	459	
Physics	36	16	184	81	8	4	228	22	164	72	13	6	228	36	19	141	74	13	190	
<b>LIFE SCIENCES</b>	221	24	678	74	22	2	921	20	662	78	19	2	848	185	27	484	71	8	677	
Biology	116	25	336	73	8	2	460	20	336	77	12	3	436	85	25	256	74	5	346	
Psychology	104	23	342	74	14	3	460	16	325	82	7	2	396	66	23	212	75	3	281	
Sport & Exercise Science	1	100					1	94	1	6			16	34	68	16	32		50	
<b>MANAGEMENT &amp; LANGUAGES</b>	434	25	1,249	73	34	2	1,717	20	1,295	78	41	2	1,665	438	28	1,060	69	40	3	1,538
Accountancy & Finance	134	30	308	68	8	2	450	20	317	78	11	3	408	115	32	234	65	13	4	362
Combined Studies (BA)	15	45	18	55			33	47	15	50	1	3	30	32	78	8	20	1	2	41
Economics	74	30	169	69	1		244	16	211	81	7	3	260	60	23	199	75	6	2	265
Languages	82	21	292	76	9	2	383	18	307	79	11	3	390	72	21	259	76	8	2	339
Management	123	21	446	76	16	3	585	21	410	77	10	2	534	146	31	317	67	9	2	472
Management (Scottish Borders Campus)	6	27	16	73			22	16	35	81	1	2	43	13	22	43	73	3	5	59
<b>MATHEMATICAL &amp; COMPUTER SCIENCES</b>	205	21	724	75	33	3	962	26	643	72	21	2	899	232	28	578	70	13	2	823
Actuarial Mathematics & Statistics	80	23	253	74	9	3	342	28	230	71	4	1	324	73	24	224	75	3	1	300
Computer Science	53	20	197	75	12	5	262	25	181	71	10	4	254	64	28	160	71	1	1	225
Mathematics	72	20	274	77	12	3	358	26	232	72	7	2	321	95	32	194	65	9	3	298
<b>TEXTILES &amp; DESIGN</b>	180	31	373	65	24	4	577	27	402	70	17	3	576	188	32	389	66	11	2	588
Combined Studies	2	33	4	67			6	83	1	17			6	2	40	3	60			5
Textiles & Design	178	31	369	65	24	4	571	27	401	70	17	3	570	186	32	386	66	11	2	583

Includes full and part-time students. Includes home students on a year abroad as part of their studies. Excludes registered incoming exchange and non-graduating students.

Withdrawal figures include those who have left the University for either academic or personal reasons.

"Other qualifications" include the Diploma and the Certificate of Higher Education.

UNDERGRADUATE STUDENT PROGRESSION: 2012/13 - 2015/16

FRESHERS ONLY: On-campus - Scotland

SCHOOL: Programme	2014/15 to 2015/16				2013/14 to 2014/15				2012/13 to 2013/14						
	Awarded degree/ awarded or eligible for other qualification	% of total	Continuing as registered students in 2015/16	Withdrawn from the University	Total	Awarded degree/ awarded or eligible for other qualification	% of total	Continuing as registered students in 2014/15	Withdrawn from the University	Total	Awarded degree/ awarded or eligible for other qualification	% of total	Continuing as registered students in 2013/14	Withdrawn from the University	Total
<b>UNIVERSITY TOTAL</b>	39	2	1,606	89	1,797	63	3	1,917	90	2,131	98	6	1,572	88	1,778
<b>ENERGY, GEOSCIENCE, INFRASTRUCTURE &amp; SOCIETY</b>	6	2	218	88	247	6	3	170	86	198	7	3	194	89	217
Architectural Engineering			30	91	33	1	3	29	88	33	3	8	29	78	37
Civil Engineering	4	3	118	91	130	3	3	88	83	106	3	2	112	90	124
Construction Management & Surveying	1	2	40	87	46	1	3	34	94	36	1	3	33	94	35
Urban Studies	1	3	30	79	38	1	4	19	83	23	3	13	20	95	21
<b>ENGINEERING &amp; PHYSICAL SCIENCES</b>	6	1	359	89	402	21	4	420	86	490	31	6	415	85	487
Chemical Engineering	1	1	74	87	85	7	2	95	88	108	2	2	88	90	98
Chemistry	1	1	66	87	76	7	8	79	88	90	13	14	75	79	95
Combined Studies (BSc/BEng)	2	8	20	83	24	7	23	18	60	30	4	17	17	74	23
Electrical, Electronic & Computer Engineering			51	91	56			57	84	68	4	6	59	86	69
Mechanical Engineering	1	1	86	93	92	2	2	99	94	105	2	2	117	94	124
Physics	1	1	62	90	69	5	6	72	81	89	6	8	59	76	78
<b>LIFE SCIENCES</b>	3	1	233	91	255	7	2	338	94	361	5	3	141	93	152
Biology	2	2	111	93	119	4	2	162	93	175	3	4	71	92	77
Psychology	1	1	122	90	136	3	2	176	95	186	2	3	70	93	75
<b>MANAGEMENT &amp; LANGUAGES</b>	13	3	367	90	408	18	3	531	92	580	26	6	420	89	472
Accountancy & Finance	3	2	118	91	129	5	4	127	90	141	3	3	83	86	97
Combined Studies (BA)			37	93	40	1	1	78	94	83	1	100	81	92	1
Economics	2	5	78	90	87	1	1	126	94	134	2	2	96	96	88
Languages	2	2	78	90	87	1	1	126	94	134	7	5	96	96	100
Management	6	4	134	88	152	11	5	183	90	204	15	9	147	89	166
Management (Scottish Borders Campus)								16	94	17	5	25	13	65	20
<b>MATHEMATICAL &amp; COMPUTER SCIENCES</b>	2	1	286	91	313	4	1	294	93	316	10	4	233	92	252
Actuarial Mathematics & Statistics			123	96	128			121	97	125	2	2	104	96	108
Computer Science	1	1	63	83	76	2	2	83	90	92	5	10	44	88	50
Mathematics	1	1	100	92	109	2	2	90	91	99	3	3	85	90	94
<b>TEXTILES &amp; DESIGN</b>	9	5	143	83	172	7	4	164	88	186	19	10	169	85	198
Textiles & Design	9	5	143	83	172	7	4	164	88	186	19	10	169	85	198

Includes full- and part-time students. Includes home students on a year abroad as part of their studies. Excludes registered incoming exchange and non-graduating students.

Withdrawal figures include those who have left the University for either academic or personal reasons.

"Other qualifications" include the Diploma and the Certificate of Higher Education.

Totals also include new entrants to year 2 and above.

UNDERGRADUATE STUDENT PROGRESSION (Split UK and EU/other overseas): 2014/15 to 2015/16

ALL YEARS: On-campus - Scotland

SCHOOL - Programme	Awarded degree/ awarded or deemed eligible for other qualification			Continuing as registered students in 2015/16			Withdrawn from the University			Total							
	UK % of total	EU & Overseas % of total	Total	UK % of total	EU & Overseas % of total	Total	UK % of total	EU & Overseas % of total	Total	UK % of total	EU & Overseas % of total	Total					
<b>UNIVERSITY TOTAL</b>	1,119	398	1,517	3,984	76	889	4,873	163	3	23	2	186	5,266	80	1,310	20	6,576
<b>ENERGY, GEOSCIENCE, INFRASTRUCTURE &amp; SOCIETY</b>	121	29	150	489	77	105	594	26	4	2	1	28	636	82	136	18	772
Architectural Engineering	11	13	21	67	82	26	93	4	5	1	3	5	82	69	37	31	119
Civil Engineering	55	16	69	280	82	48	328	7	2	1	2	8	342	84	63	16	405
Construction Management & Surveying	32	27	35	80	68	16	96	6	5	5	6	6	118	86	19	14	137
Urban Studies	23	24	25	62	66	15	77	9	10	9	9	9	94	85	17	15	111
<b>ENGINEERING &amp; PHYSICAL SCIENCES</b>	262	65	327	1,057	78	198	1,255	39	3	6	2	45	1,358	83	269	17	1,627
Chemical Engineering	61	21	70	222	77	51	273	7	2	3	5	10	290	82	63	18	353
Chemistry	42	18	47	186	79	26	212	8	3	1	3	9	236	88	32	12	268
Combined Studies (BSc/BEng)	16	24	20	47	69	16	63	5	7	5	7	5	68	77	20	23	88
Electrical, Electronic & Computer Engineering	23	13	44	148	85	33	181	4	2	2	4	6	175	76	56	24	231
Mechanical Engineering	87	23	110	284	75	58	342	7	2	2	7	7	378	82	81	18	459
Physics	33	16	36	170	81	14	184	8	4	4	8	8	211	93	17	7	228
<b>LIFE SCIENCES</b>	179	22	221	604	75	74	678	21	3	1	1	22	804	87	117	13	921
Biology	91	23	116	298	75	38	336	7	2	1	2	8	396	86	64	14	460
Psychology	87	21	104	306	75	36	342	14	3	3	14	14	407	88	53	12	460
Sport & Exercise Science	1	100	1										1	100			1
<b>MANAGEMENT &amp; LANGUAGES</b>	279	22	434	972	76	277	1,249	30	2	4	1	34	1,281	75	436	25	1,717
Accountancy & Finance	88	30	134	201	68	107	308	8	3	8	8	8	297	66	153	34	450
Combined Studies (BA)	6	32	15	13	68	5	18						19	58	14	42	33
Economics	36	20	74	139	79	30	169	1	1	1	28	1	176	72	68	28	244
Languages	61	19	82	249	78	43	292	8	3	1	2	9	318	83	65	17	383
Management	83	18	123	355	79	91	446	13	3	3	2	16	451	77	134	23	585
Management (Scottish Borders Campus)	5	25	6	15	75	1	16						20	91	2	9	22
<b>MATHEMATICAL &amp; COMPUTER SCIENCES</b>	130	19	205	536	77	188	724	26	4	7	3	33	692	72	270	28	962
Actuarial Mathematics & Statistics	28	16	80	142	80	111	253	7	4	2	1	9	177	52	165	48	342
Computer Science	36	17	53	165	78	32	197	10	5	2	4	12	211	81	51	19	262
Mathematics	66	22	72	229	75	45	274	9	3	3	6	12	304	85	54	15	358
<b>TEXTILES &amp; DESIGN</b>	148	30	180	326	66	47	373	21	4	3	4	24	495	86	82	14	577
Combined Studies	1	33	2	2	67	2	4						3	50	3	50	6
Textiles & Design	147	30	178	324	66	45	369	21	4	3	4	24	492	86	79	14	571

Includes full- and part-time students. Includes home students on a year abroad as part of their studies. Excludes registered incoming exchange and non-graduating students.

Withdrawal figures include those who have left the University for either academic or personal reasons.

Other qualifications include the Diploma and the Certificate of Higher Education.

**UNDERGRADUATE STUDENT PROGRESSION: 2012/13 to 2015/16**  
**ALL YEARS: On-campus - Dubai**

SCHOOL: Programme	2014/15 to 2015/16			2013/14 to 2014/15			2012/13 to 2013/14			Total						
	Awarded degree/ or eligible for other qualification % of total	Continuing as registered students in 2015/16 % of total	Withdrawn from the University % of total	Total	Awarded degree/ or eligible for other qualification % of total	Continuing as registered students in 2014/15 % of total	Withdrawn from the University % of total	Total	Awarded degree/ or eligible for other qualification % of total		Continuing as registered students in 2013/14 % of total	Withdrawn from the University % of total				
<b>UNIVERSITY TOTAL</b>	612	27	1,537	69	84	4	2,233	101	5	2,165	26	1,321	67	146	7	1,985
<b>ENERGY, GEOSCIENCE, INFRASTRUCTURE &amp; SOCIETY</b>	33	18	146	79	6	3	185	12	6	213	50	24	141	19	9	210
Architectural Engineering	13	16	67	82	2	2	82	5	6	72	88	5	53	95		56
Civil Engineering	19	19	79	77	4	4	102	34	29	82	69	3	119	84	15	122
Construction Management & Surveying	1	100					1	7	58	1	8	4	24	75	4	32
<b>ENGINEERING &amp; PHYSICAL SCIENCES</b>	151	30	342	67	14	3	507	152	29	354	68	16	347	71	24	487
Combined Studies (BSc/BEng)	37	54	28	41	3	4	68	13	28	31	67	2	46	7	26	15
Electrical, Electronic & Computer Engineering	31	23	103	76	2	1	136	59	38	92	60	3	154	38	27	99
Mechanical Engineering	83	27	211	70	9	3	303	80	25	231	72	11	322	74	13	4
<b>LIFE SCIENCES</b>	28	20	108	77	5	4	141	9	9	91	87	5	105	1	2	52
Psychology	28	20	108	77	5	4	141	9	9	91	87	5	105	1	2	52
<b>MANAGEMENT &amp; LANGUAGES</b>	321	30	696	66	38	4	1,055	368	35	629	60	52	1,049	312	31	624
Accountancy & Finance	139	33	277	65	10	2	426	141	35	254	63	6	401	131	29	303
Management	182	29	419	67	28	4	629	227	35	375	58	46	648	181	33	321
<b>MATHEMATICAL &amp; COMPUTER SCIENCES</b>	28	23	86	72	6	5	120	10	11	74	81	7	8	91	2	4
Computer Science	28	23	86	72	6	5	120	10	11	74	81	7	8	91	2	4
<b>TEXTILES &amp; DESIGN</b>	51	23	159	71	15	7	225	40	22	136	74	9	185	37	22	111
Textiles & Design	51	23	159	71	15	7	225	40	22	136	74	9	185	37	22	111

Includes full- and part-time students. Excludes registered incoming exchange and non-graduating students. Withdrawal figures include those who have left the University for either academic or personal reasons.

**UNDERGRADUATE STUDENT PROGRESSION: 2012/13 to 2015/16**  
**FRESHERS ONLY: On-Campus - Dubai**

SCHOOL: Programme	2014/15 to 2015/16			2013/14 to 2014/15			2012/13 to 2013/14			Total						
	Awarded degree/ or eligible for other qualification % of total	Continuing as registered students in 2015/16 % of total	Withdrawn from the University % of total	Total	Awarded degree/ or eligible for other qualification % of total	Continuing as registered students in 2014/15 % of total	Withdrawn from the University % of total	Total	Awarded degree/ or eligible for other qualification % of total		Continuing as registered students in 2013/14 % of total	Withdrawn from the University % of total				
<b>UNIVERSITY TOTAL</b>	64	8	670	84	64	8	798	100	12	701	81	68	869	84	10	671
<b>ENERGY, GEOSCIENCE, INFRASTRUCTURE &amp; SOCIETY</b>	1	2	48	89	5	9	54	13	16	62	75	8	83	10	11	70
Architectural Engineering	1	4	23	88	2	26	26	1	3	25	81	5	31	1	3	33
Civil Engineering			25	89	3	11	28	6	14	36	84	1	43	1	2	35
Construction Management & Surveying								6	67	1	11	2	9	8	73	2
<b>ENGINEERING &amp; PHYSICAL SCIENCES</b>	13	9	122	85	9	6	144	17	9	148	83	14	179	14	7	166
Electrical, Electronic & Computer Engineering	7	14	41	84	1	2	49	13	23	41	72	3	57	10	16	46
Mechanical Engineering	6	6	81	85	8	8	95	4	3	107	88	11	122	4	3	120
<b>LIFE SCIENCES</b>	1	2	49	89	5	9	55	1	2	52	93	3	56			39
Psychology	1	2	49	89	5	9	55	1	2	52	93	3	56			39
<b>MANAGEMENT &amp; LANGUAGES</b>	42	10	344	83	29	7	415	65	15	333	77	34	432	57	14	300
Accountancy & Finance	6	4	139	90	9	6	154	9	7	119	90	4	132	7	5	133
Management	36	14	205	79	20	8	261	56	19	214	71	30	300	50	20	167
<b>MATHEMATICAL &amp; COMPUTER SCIENCES</b>	1	2	37	86	5	12	43	1	2	39	87	5	45	1	2	33
Computer Science	1	2	37	86	5	12	43	1	2	39	87	5	45	1	2	33
<b>TEXTILES &amp; DESIGN</b>	6	7	70	80	11	13	87	3	4	67	91	4	74	2	3	63
Textiles & Design	6	7	70	80	11	13	87	3	4	67	91	4	74	2	3	63

Includes full- and part-time students. Excludes registered incoming exchange and non-graduating students. Withdrawal figures include those who have left the University for either academic or personal reasons. Totals also include new entrants to year 2 and above.



**UNDERGRADUATE STUDENT PROGRESSION: 2014/15 to 2015/16**  
**ALL YEARS: On-Campus - Malaysia**

SCHOOL: Programme

	2014/15 to 2015/16 Awarded degree/ awarded or eligible for other qualification % of total	Continuing as registered students in 2015/16 % of total	Withdrawn from the University % of total	Total
<b>UNIVERSITY TOTAL</b>	<b>1</b>	<b>102</b>	<b>12</b>	<b>115</b>
<b>ENERGY, GEOSCIENCE, INFRASTRUCTURE &amp; SOCIETY</b>		<b>11</b>	<b>2</b>	<b>13</b>
<b>ENGINEERING &amp; PHYSICAL SCIENCES</b>		<b>47</b>	<b>6</b>	<b>53</b>
Chemical Engineering		30	6	36
Mechanical Engineering		17	17	17
<b>MANAGEMENT &amp; LANGUAGES</b>		<b>11</b>	<b>1</b>	<b>12</b>
Management		11	1	12
<b>MATHEMATICAL &amp; COMPUTER SCIENCES</b>	<b>1</b>	<b>33</b>	<b>3</b>	<b>37</b>
Actuarial Mathematics & Statistics	1	33	3	37

Includes full- and part-time students. Excludes registered incoming exchange and non-graduating students.  
 Withdrawal figures include those who have left the University for either academic or personal reasons.

**UNDERGRADUATE STUDENT PROGRESSION: 2014/15 to 2015/16**  
**FRESHERS ONLY: On-Campus - Malaysia**

SCHOOL: Programme

	2014/15 to 2015/16 Awarded degree/ awarded or eligible for other qualification % of total	Continuing as registered students in 2015/16 % of total	Withdrawn from the University % of total	Total
<b>UNIVERSITY TOTAL</b>	<b>1</b>	<b>102</b>	<b>12</b>	<b>115</b>
<b>ENERGY, GEOSCIENCE, INFRASTRUCTURE &amp; SOCIETY</b>		<b>11</b>	<b>2</b>	<b>13</b>
<b>ENGINEERING &amp; PHYSICAL SCIENCES</b>		<b>47</b>	<b>6</b>	<b>53</b>
Chemical Engineering		30	6	36
Mechanical Engineering		17	17	17
<b>MANAGEMENT &amp; LANGUAGES</b>		<b>11</b>	<b>1</b>	<b>12</b>
Management		11	1	12
<b>MATHEMATICAL &amp; COMPUTER SCIENCES</b>	<b>1</b>	<b>33</b>	<b>3</b>	<b>37</b>
Actuarial Mathematics & Statistics	1	33	3	37

Includes full- and part-time students. Excludes registered incoming exchange and non-graduating students.  
 Withdrawal figures include those who have left the University for either academic or personal reasons.  
 Figures also include new entrants to year 2 and above.

## GRADUATE FIRST DESTINATIONS (FIRST DEGREES): 2011/12 - 2014/15

SCHOOL/DIVISION	2014/15 (January 2016 census)										2013/14 (January 2015 census)															
	No. of Known Dest. (KD)	No. in Emp.	% of KD	No. in Further Study	% of KD	% in Emp./Study (note 1)	Not Available/Not Seeking	% of KD	Seeking	% of KD	Total in Emp.	Graduate-level employment % in Level/Job (note 2)	No. of Known Dest. (KD)	No. in Emp.	% of KD	No. in Further Study	% of KD	% in Emp./Study (note 1)	Not Available/Not Seeking	% of KD	Seeking	% of KD	Total in Emp.	Graduate-level employment % in Level/Job (note 2)		
<b>UNIVERSITY TOTAL</b>	685	542	79	89	13	95	33	5	34	5	542	447	82	739	580	78	81	11	95	43	6	35	5	580	452	78
<b>ENERGY, GEOSCIENCE, INFRASTRUCTURE &amp; SOCIETY</b>	83	74	89	3	4	95	2	2	4	5	74	69	93	115	101	88	6	5	97	5	4	3	101	88	87	
Architectural Engineering	5	4	80	1	20	100					4	4	100	5	5	100			100				5	4	80	
Construction Management & Surveying	22	22	100			100					22	22	100	39	37	95	1	3	100	1	3		37	35	95	
Civil Engineering	39	32	82	2	5	92	2	5	3	8	32	28	88	57	47	82	4	7	96	4	2		47	39	83	
Urban Studies	17	16	94			94		1	6	6	16	15	94	14	12	86	1	7	93	1			12	10	83	
<b>LIFE SCIENCES</b>	74	59	80	23	31	94	9	12	5	7	59	40	68	92	58	63	22	24	93	6	7	6	58	39	67	
Biological Sciences	31	31	100	14	45	92	4	13	4	13	31	25	81	48	29	60	12	25	89	2	4	5	29	25	86	
Applied Psychology	42	28	67	8	19	97	5	12	1	2	28	15	54	32	19	59	10	31	97	2	6	1	19	10	53	
Sport & Exercise Science	1			1	100	100								12	10	83			100	2	17		10	4	40	
<b>ENGINEERING &amp; PHYSICAL SCIENCES</b>	155	113	73	28	18	92	2	1	12	8	113	100	88	170	124	73	26	15	93	9	5	11	6	124	94	76
Chemical Engineering	43	34	79	6	14	93		3	7		34	33	97	37	30	81			88	3	8	4	30	28	93	
Chemistry	19	12	63	6	32	100	1	5			12	10	83	31	18	58	10	32	97	2	6	1	18	11	61	
Mechanical Engineering	62	49	79	5	8	87		8	13		49	41	84	49	41	84	5	10	94		3	6	41	36	88	
Physics	15	3	20	10	67	93	1	7	1	7	3	2	67	25	12	48	8	32	87	2	8	3	12	6	50	
Electrical, Electronic & Computer Engineering	13	12	92	1	8	100					12	12	100	18	17	94	1	6	100				17	11	65	
Combined Studies	3	3	100			100					3	2	67	10	6	60	2	20	100	2	20		6	2	33	
<b>MANAGEMENT &amp; LANGUAGES</b>	180	151	79	23	12	96	9	5	7	4	151	124	82	144	117	81	12	8	94	7	5	8	6	117	91	78
Accountancy & Finance	62	56	90	5	8	100	1	2			56	49	88	34	29	85	3	9	97	1	3	1	29	24	83	
Economics	19	15	79	4	21	100					15	14	93	20	19	95	1	5	100	1	5		19	16	84	
Management	56	38	68	7	13	90	6	11	5	9	38	31	82	42	28	67	4	10	86	5	12	5	28	20	71	
Management (Scottish Borders Campus)	5	5	100			100					5	3	60	5	4	80	1	20	100				4	2	50	
Languages	44	33	75	7	16	95	2	5	2	5	33	24	73	39	33	85	3	8	95		2	5	33	25	76	
Combined Studies	4	4	100			100					4	3	75	4	4	100			100				4	4	100	
<b>MATHEMATICAL &amp; COMPUTER SCIENCES</b>	77	59	77	9	12	94	5	6	4	5	59	50	85	120	98	82	7	6	95	10	8	5	4	98	80	82
Actuarial Mathematics & Statistics	18	14	78	1	6	88	1	6	2	11	14	14	100	42	38	90	2	5	100	2	5		38	32	84	
Computer Science	26	20	77	5	19	96		4	1	4	20	17	85	35	31	89	1	3	97	2	6	1	31	28	90	
Mathematics	33	25	76	3	9	97	4	12	1	3	25	19	76	43	29	67	4	9	89	6	14	4	29	20	69	
<b>TEXTILES &amp; DESIGN</b>	106	86	81	3	3	98	6	6	2	2	86	64	74	98	82	84	8	8	98	6	6	2	82	60	73	
Combined Studies														1	1	100			100				1	1	100	
Textiles	106	86	81	3	3	98	6	6	2	2	86	64	74	97	81	84	8	8	98	6	6	2	81	59	73	

The census date for graduate first destinations is 6 months following graduation.

'Employed' includes those due to start employment within the next month. 'Other' includes those who are not available for employment because of travel, family commitments, health or other reasons.

Note 1: This is the percentage of those in employment and/or further study as against the aggregated total who are in employment and/or further study or reported as 'seeking'.

Note 2: Graduate Employment is based on the SOC 2000 classification of occupations for studying the graduate labour market (Institute for Employment Research, Warwick).

SCHOOL/DIVISION	2012/13 (January 2014 census)											2011/12 (January 2013 census)														
	No. of Known Dest. (KD)	No. in Emp.	% of KD	No. in Further Study	% of KD	% in Emp./Study (note 1)	Not Available/Not Seeking	% of KD	Seeking	% of KD	Total in Emp. (note 2)	% in Graduate-Level Job	No. of Known Dest. (KD)	No. in Emp.	% of KD	No. in Further Study	% of KD	% in Emp./Study (note 1)	Not Available/Not Seeking	% of KD	Seeking	% of KD	Total in Emp. (note 2)	% in Graduate-Level Job		
<b>UNIVERSITY TOTAL</b>	830	637	77	119	14	94	22	3	52	6	625	473	76	797	590	74	129	16	94	30	4	47	6	797	467	59
<b>ENERGY, GEOSCIENCE, INFRASTRUCTURE &amp; SOCIETY</b>	114	99	87	11	10	98	2	2	2	2	99	86	87	120	100	83	6	5	93	6	5	8	7	120	94	78
Architectural Engineering	13	10	77	2	15	92			1	8	10	9	90	12	11	92			92		1	1	8	12	10	83
Construction Management & Surveying	46	41	89	2	4	98	2	4	1	2	41	35	85	50	40	80	2	4	89	3	6	5	10	50	38	76
Civil Engineering	38	35	92	3	8	100					35	32	91	40	35	88	2	5	97	2	5	1	3	40	33	83
Urban Studies	17	13	76	4	24	100					13	10	77	18	14	78	2	11	94	1	6	1	6	18	13	72
<b>LIFE SCIENCES</b>	107	72	67	24	22	93	4	4	7	7	72	40	56	113	65	58	30	27	91	9	8	9	8	113	35	31
Biological Sciences	43	26	61	12	28	90	1	2	4	9	26	16	62	53	29	55	12	23	84	4	8	8	15	53	18	34
Psychology	37	24	65	11	30	95	2	5	2	5	24	12	50	20	13	65	3	15	94	3	15	1	5	20	8	40
Sport & Exercise Science	27	22	81	1	4	96	3	11	1	4	22	12	55	40	23	58	15	38	100	2	5			40	9	23
<b>ENGINEERING &amp; PHYSICAL SCIENCES</b>	168	114	68	40	24	92	1	1	13	8	114	93	82	152	97	64	44	29	95	2	1	8	5	152	78	51
Chemical Engineering	40	31	78	8	20	98			1	2	31	27	87	33	27	82	5	15	97		1	3	33	24	73	
Chemistry	26	13	50	11	42	92			2	8	13	7	54	26	13	50	12	46	100				26	8	31	
Mechanical Engineering	67	52	78	11	16	94	4	6	4	6	52	47	90	52	35	67	14	27	94		3	6	52	31	60	
Physics	15	5	33	9	60	93			1	7	5	2	40	21	9	43	9	43	90	1	2	10	21	4	19	
Electrical, Electronic & Computer Engineering	12	9	75	1	8	91	1	8	1	8	9	8	89	17	12	71	3	18	94	1	6	1	6	17	11	65
Combined Studies	8	4	50			50			4	50	4	2	50	3	1	33	1	33	67				33	3		
<b>MANAGEMENT &amp; LANGUAGES</b>	169	133	79	16	9	93	9	5	11	7	133	91	68	185	137	74	25	14	92	9	5	14	8	185	105	57
Accountancy & Finance	47	43	91	2	4	100	2	4			43	31	72	47	35	74	5	11	93	4	9	3	6	47	26	55
Economics	23	17	74	3	13	100	3	13			17	13	76	18	13	72	1	6	82	1	6	3	17	18	11	61
Management	55	46	84	3	5	94	3	5	3	5	46	31	67	74	55	74	11	15	93	3	4	5	7	74	39	53
Management (Scottish Borders Campus)	4	3	75			75			1	25	3	1	33	3	3	100								3	2	67
Languages	35	23	66	7	20	88	1	3	4	11	23	14	61	39	28	72	7	18	92	1	3	3	8	39	25	64
Combined Studies	5	1	20	1	20	40			3	60	1	1	100	4	3	75	1	25	100				4	2	50	
<b>MATHEMATICAL &amp; COMPUTER SCIENCES</b>	137	106	77	21	15	93			10	7	94	80	85	123	94	76	20	16	94	2	2	7	6	123	78	63
Actuarial Mathematics & Statistics	36	31	86	4	11	97			1	3	31	27	87	40	34	85	5	13	100	1	3			40	34	85
Computer Science	39	32	82	4	10	92			3	8	32	26	81	36	26	72	4	11	86	1	3	5	14	36	23	64
Mathematics	62	43	69	13	21	90			6	10	31	27	87	47	34	72	11	23	96		2	4	47	21	45	
<b>TEXTILES &amp; DESIGN</b>	135	113	84	7	5	93	6	4	9	7	113	83	73	104	97	93	4	4	99	2	2	1	1	104	77	74
Combined Studies	1	1	100			100					1			1	1	100			100					1	1	100
Textiles	134	112	84	7	5	93	6	4	9	7	112	83	74	103	96	93	4	4	99	2	2	1	1	103	76	74

The census date for graduate first destinations is 6 months following graduation. 'Employed' includes those due to start employment within the next month. 'Other' includes those who are not available for employment because of travel, family commitments, health or other reasons.

Note 1: This is the percentage of those in employment and/or further study as against the aggregated total who are in employment and/or further study or reported as 'seeking'.

Note 2: Graduate Employment is based on the SOC 2000 classification of occupations for studying the graduate labour market (Institute for Employment Research, Warwick).



		1. Staff are good at explaining things.	2. Staff have made the subject interesting.	3. Staff are enthusiastic about what they are teaching.	4. The course is intellectually stimulating.	5. The criteria used in marking have been clear in advance.	6. Assessment arrangements and marking have been fair.	7. Feedback on my work has been prompt.	8. I have received detailed comments on my work.	9. Feedback on my work has helped me clarify things I did not understand.	10. I have received sufficient advice and support with my studies.	11. I have been able to contact staff when I needed to.	12. Good advice was available when I needed to make study choices.	13. The timetable works efficiently as far as my activities are concerned.	14. Any changes in the course or teaching have been communicated effectively.	15. The course is well organised and is running smoothly.	16. The library resources and services are good enough for my needs.	17. I have been able to access general IT resources when I needed to.	18. I have been able to access specialised equipment, facilities or rooms when I needed.	19. The course has helped me to present myself with confidence.	20. My communication skills have improved.	21. As a result of the course, I feel confident in tackling unfamiliar problems.	22. Overall Satisfaction	Average (22 Questions)						
<b>ENERGY, GEOSCIENCE, INFRASTRUCTURE &amp; SOCIETY</b> Building (Construction & Management Surveying)	2015	88	92	85	78	88	88	65	77	69	88	85	92	92	92	78	77	81	77	83	88	81	81	96	85					
	2014	86	91	84	87	81	71	75	62	72	86	91	84	74	75	69	78	78	91	97	87	81	78	75	78	80				
	2013	86	95	70	95	85	77	90	90	73	60	88	85	90	89	86	84	85	90	77	78	73	83	80	88	83				
	2012	81	90	76	84	76	61	67	65	63	47	82	84	64	86	90	80	78	92	90	98	87	76	67	84	78	86	77		
	2015	89	96	84	87	89	71	73	78	76	60	89	89	60	84	73	86	82	93	84	79	76	80	82	91	81				
	2014	86	94	79	89	81	82	91	83	91	70	74	86	87	91	85	98	89	94	89	96	79	74	81	83	92	86	86		
	2013	96	100	93	99	92	88	94	93	86	81	87	93	96	93	90	91	96	95	97	97	95	93	94	97	99	93			
	2012	90	98	84	94	85	83	80	89	82	83	81	91	93	93	87	90	92	88	91	92	91	95	90	92	97	90			
	2015	87	90	86	86	86	72	81	86	67	71	57	78	71	89	95	86	86	76	81	86	60	83	81	86	81	86	80		
	2014	86	87	87	91	78	77	66	78	81	87	75	85	91	87	84	81	59	84	69	85	87	87	81	94	82	84	82		
	2013	81	89	74	81	78	81	89	78	89	77	72	88	89	85	89	84	85	88	78	88	94	89	100	93	81	85			
	2012	96	96	96	92	100	93	88	96	96	96	88	93	92	92	96	95	100	92	92	95	92	96	91	88	92	92	96	94	
<b>ENGINEERING &amp; PHYSICAL SCIENCES</b> Chemistry	2015	94	96	87	96	99	88	87	89	91	83	88	92	87	93	97	93	91	88	100	87	82	89	89	97	91				
	2014	92	95	95	92	87	86	89	87	86	82	87	92	91	100	84	93	85	94	92	84	85	82	85	82	85	90			
	2013	96	100	91	95	100	92	91	91	94	88	97	98	97	97	100	95	88	100	97	92	88	91	97	100	95				
	2012	97	97	97	97	97	94	93	97	92	92	96	94	97	90	95	94	93	97	90	87	94	97	91	94	97	94			
	2015	91	95	85	89	97	61	66	85	39	54	61	86	81	90	86	75	83	70	72	82	82	81	83	93	97	89	93	97	81
	2014	96	100	91	92	100	81	94	89	68	75	81	90	91	88	89	94	89	93	91	97	85	91	96	94	97	97	100	90	
	2013	93	100	88	94	91	85	89	89	83	82	85	94	100	97	85	95	100	97	89	92	94	92	89	93	91	94	94	92	
	2012	97	96	96	100	96	88	96	87	80	88	90	95	96	96	93	92	96	83	96	94	100	93	89	96	100	93	96	96	93
	2015	72	76	76	64	72	56	76	80	36	44	44	82	80	88	79	73	72	72	76	81	84	76	83	74	67	75	79	72	71
	2014	93	96	91	96	91	80	91	85	78	60	87	92	96	100	81	91	87	91	96	91	90	94	91	96	91	96	100	100	90
	2013	76	79	66	74	84	74	74	77	74	70	71	71	72	90	54	78	80	79	75	87	94	89	80	76	70	80	80	85	77
	2012	81	87	66	79	91	74	70	74	81	66	77	74	70	91	62	86	89	85	83	89	91	91	87	73	70	74	74	83	79
2015	94	96	90	96	94	68	77	80	62	54	64	93	90	99	91	87	84	89	87	93	96	91	91	93	90	94	94	93	86	
2014	95	100	89	94	97	73	76	92	65	62	68	94	92	98	92	91	86	94	94	90	97	94	85	84	86	86	97	88		
2013	89	97	83	94	83	68	74	81	64	55	69	87	88	90	83	85	91	87	79	84	87	82	82	87	87	82	92	83		
2012	92	94	89	94	93	82	82	92	79	73	83	93	94	96	90	90	91	92	88	93	97	93	89	96	95	97	96	98	91	
2015	83	87	64	91	91	77	69	82	73	82	81	89	87	96	85	84	82	91	78	84	82	87	82	82	84	82	80	87	83	
2014	86	84	81	92	88	71	81	78	61	65	73	86	88	96	74	82	92	80	73	85	84	89	83	87	84	84	92	88	82	
2013	95	97	95	95	94	84	81	87	94	76	85	89	86	97	82	91	94	91	88	91	94	90	89	89	87	90	88	94	90	
2012	93	94	94	85	97	84	80	87	93	75	81	88	81	97	86	91	97	94	82	91	97	90	86	89	87	91	86	88	89	
<b>MATHEMATICAL &amp; COMPUTER SCIENCES</b> Maths and Statistics (Mathematics & AMS)	2015	90	97	82	93	90	75	91	70	65	76	89	87	95	85	88	77	91	95	79	73	74	68	78	95	83				
	2014	90	95	80	93	92	77	84	79	71	73	87	85	86	82	89	84	76	83	75	76	76	72	80	92	83				
	2013	92	97	86	92	93	81	77	90	89	73	76	92	89	98	88	91	85	92	95	82	79	79	72	80	98	86			
	2012	93	99	86	92	93	81	76	93	87	72	79	89	86	98	85	87	80	89	84	75	72	73	79	97	86				
	2015	87	97	82	82	87	68	74	71	55	71	85	81	97	77	84	89	84	79	91	86	95	89	83	79	87	84	92		
	2014	82	93	69	86	79	75	80	89	66	68	72	83	84	91	76	80	72	87	81	94	92	98	90	91	95	93	84	93	84
2013	85	93	80	88	80	75	82	82	76	70	65	87	91	96	76	85	85	92	78	88	93	95	86	85	84	85	85			
2012	67	93	61	61	61	43	50	54	48	34	28	69	73	77	57	61	71	59	54	71	69	77	66	73	65	73	61	62		

**STAFF: 2013 - 2015**

**ALL STAFF BY CONTRACT TYPE: AT END DECEMBER 2015**  
**Scottish Campuses**

GRADE RANGE	End December 2015					End December 2014					End December 2013				
	ft/pt	Gender	No	% of category	% of all staff	ft/pt	Gender	No	% of category	% of all staff	ft/pt	Gender	No	% of category	% of all staff
<b>University Total</b>			<b>1942</b>					<b>1913</b>					<b>1870</b>		
Professional			<b>165</b>		<b>8</b>			<b>150</b>		<b>8</b>			<b>149</b>		<b>8</b>
	ft	F	27	16	1	ft	F	23	15	1	ft	F	21	14	1
		M	112	70	6		M	104	70	5		M	110	74	6
	pt	F	3	2		pt	F	3	2		pt	F	2	1	1
		M	23	14	1		M	20	13	1		M	16	11	1
Academic (non-professional)			<b>391</b>		<b>20</b>			<b>407</b>		<b>21</b>			<b>391</b>		<b>21</b>
	ft	F	105	27	5	ft	F	104	26	5	ft	F	92	24	5
		M	228	57	12		M	235	57	12		M	232	59	12
	pt	F	37	9	2	pt	F	39	10	2	pt	F	39	10	2
		M	21	5	1		M	29	7	2		M	28	7	1
Research			<b>235</b>		<b>12</b>			<b>216</b>		<b>11</b>			<b>212</b>		<b>11</b>
	ft	F	61	26	3	ft	F	47	22	2	ft	F	45	21	2
		M	151	64	8		M	128	59	7		M	149	70	8
	pt	F	10	4	1	pt	F	15	7	1	pt	F	7	3	5
		M	13	6	1		M	26	12	1		M	11	5	1
Professional			<b>545</b>		<b>28</b>			<b>529</b>		<b>28</b>			<b>539</b>		<b>29</b>
	ft	F	195	36	10	ft	F	186	35	10	ft	F	190	35	10
		M	248	46	13		M	231	44	12		M	245	45	13
	pt	F	87	16	4	pt	F	89	17	5	pt	F	86	16	5
		M	15	3	1		M	23	4	1		M	18	3	1
Secretarial/Clerical			<b>293</b>		<b>15</b>			<b>308</b>		<b>16</b>			<b>264</b>		<b>14</b>
	ft	F	132	45	7	ft	F	144	47	8	ft	F	128	48	7
		M	37	13	2		M	36	12	2		M	17	6	1
	pt	F	116	40	6	pt	F	116	38	6	pt	F	108	41	6
		M	8	3			M	12	3	1		M	11	4	1
Technical			<b>40</b>		<b>2</b>			<b>33</b>		<b>2</b>			<b>36</b>		<b>2</b>
	ft	F	6	15		ft	F	4	12		ft	F	4	11	
		M	28	70	1		M	23	70	1		M	25	69	1
	pt	F	3	8		pt	F	3	9		pt	F	7	19	
		M	3	8			M	3	9			M			
Craft / Manual			<b>273</b>		<b>14</b>			<b>270</b>		<b>14</b>			<b>279</b>		<b>15</b>
	ft	F	49	18	3	ft	F	47	17	2	ft	F	43	15	2
		M	112	41	6		M	105	39	5		M	111	40	6
	pt	F	96	35	5	pt	F	100	37	5	pt	F	110	39	6
		M	16	6	1		M	18	7	1		M	15	5	1

**Dubai Campus**

GRADE RANGE	End December 2015					End December 2014					End December 2013				
	ft/pt	Gender	No	% of category	% of all staff	ft/pt	Gender	No	% of category	% of all staff	ft/pt	Gender	No	% of category	% of all staff
<b>University Total</b>			<b>91</b>					<b>137</b>					<b>66</b>		
Professional			<b>2</b>		<b>2</b>			<b>56</b>		<b>41</b>			<b>2</b>		<b>3</b>
	ft	F				ft	F	24	43	18	ft	F	1	50	2
		M	2	100	2		M	32	57	23		M	1	50	2
	pt	F				pt	F				pt	F			
		M					M					M			
Academic (non-professional)			<b>69</b>		<b>76</b>			<b>59</b>		<b>43</b>			<b>50</b>		<b>76</b>
	ft	F	28	41	31	ft	F	24	41	18	ft	F	20	40	30
		M	41		45		M	35	59	26		M	29	58	44
	pt	F				pt	F				pt	F	1	2	2
		M					M					M			
Professional			<b>12</b>		<b>13</b>			<b>13</b>		<b>9</b>			<b>9</b>		<b>14</b>
	ft	F	6	50	7	ft	F	8	62	6	ft	F	6	67	9
		M	6	50	7		M	5	38	4		M	3	33	5
	pt	F				pt	F				pt	F			
		M					M					M			
Secretarial/Clerical			<b>7</b>		<b>8</b>			<b>8</b>		<b>6</b>			<b>5</b>		<b>8</b>
	ft	F	6	86	7	ft	F	4	50	3	ft	F	2	40	3
		M	1	14	1		M	1	13	1		M	3	60	5
	pt	F				pt	F	3	37	2	pt	F			
		M					M					M			
Technical			<b>1</b>		<b>1</b>			<b>1</b>							
	ft	F	1	100	1	ft	F	1	100		ft	F			
		M					M					M			
	pt	F				pt	F				pt	F			
		M					M					M			

**Malaysia Campus**

GRADE RANGE	End December 2015					End December 2014					End December 2013				
	ft/pt	Gender	No	% of category	% of all staff	ft/pt	Gender	No	% of category	% of all staff	ft/pt	Gender	No	% of category	% of all staff
<b>University Total</b>			<b>152</b>					<b>92</b>					<b>32</b>		
Professional			<b>1</b>		<b>100</b>										
	ft	F				ft	F				ft	F			
		M	1	100			M					M			
	pt	F				pt	F				pt	F			
		M					M					M			
Academic (non-professional)			<b>66</b>		<b>72</b>			<b>41</b>		<b>100</b>			<b>7</b>		<b>22</b>
	ft	F	34	52	22	ft	F	19	46	21	ft	F	7	100	22
		M	32	48	21		M	22	54	24		M	7	100	22
	pt	F				pt	F				pt	F			
		M					M					M			
Professional			<b>45</b>		<b>30</b>			<b>26</b>		<b>28</b>			<b>22</b>		<b>69</b>
	ft	F	35	78		ft	F	20	77	21	ft	F	14	64	44
		M	10	22	7		M	6	23	7		M	7	32	22
	pt	F				pt	F				pt	F	1	5	3
		M					M					M			
Secretarial/Clerical			<b>36</b>		<b>24</b>			<b>22</b>		<b>24</b>			<b>3</b>		<b>9</b>
	ft	F	29	81	19	ft	F	18	82	20	ft	F	3	100	9
		M	7	19	5		M	4	18	4		M	3	100	9
	pt	F				pt	F				pt	F			
		M					M					M			
Technical			<b>4</b>		<b>3</b>			<b>3</b>		<b>3</b>					
	ft	F	1	25	1	ft	F	1	33	1	ft	F			
		M	3	75	2		M	2	67	2		M			
	pt	F				pt	F				pt	F			
		M					M					M			



# Contact us

## HERIOT-WATT UNIVERSITY

### Edinburgh Campus

Edinburgh EH14 4AS

☎ 0131 449 5111

### Scottish Borders Campus

Galashiels TD1 3HF

☎ 0870 050 5152

### Orkney Campus

Old Academy, Back Road, Stromness

Orkney Islands

Scotland KW16 3AW

☎ 01856 850 605

### Dubai Campus

Dubai International Academic City

PO Box 294345

Dubai

UAE

☎ 00 971 4 435 8700

### Heriot-Watt University Malaysia

No 1 Jalan Venna P5/2

Precinct 5

62200 Putrajaya

Malaysia

☎ 00 60 3 8894 3888

## MARKETING AND COMMUNICATIONS

☎ 0131 451 3242

@ pr@hw.ac.uk

## STUDENT RECRUITMENT SERVICE

☎ 0131 451 3451

@ edu.liaison@hw.ac.uk

## RESEARCH AND ENTERPRISE SERVICES

☎ 0131 451 3192

@ res@hw.ac.uk