

annual statistics 2014-2015



## Contents

	Page(s)
<b>1 PROFILE AT A GLANCE</b>	<b>3</b>
<b>2 STUDENT NUMBERS</b>	<b>5 – 19</b>
- Student numbers summary (On-campus Scotland)	5
- Undergraduate (On-campus Scotland)	6 – 8
- Postgraduate Taught Course (On-campus Scotland)	9 – 11
- Postgraduate Research (On-campus Scotland)	12 – 14
- On-campus Dubai	15 – 16
- Undergraduate Exchange, Non-graduating and Visiting Students	17
- Student Domiciles	17 – 19
<b>3 TRANSNATIONAL DEGREE PROGRAMMES</b>	<b>20 – 21</b>
- Approved Learning Partners and Independent Distance Learning	20
- Approved Learning Partners	21
<b>4 UNDERGRADUATE STUDENT APPLICATIONS &amp; ADMISSIONS</b>	<b>22</b>
<b>5 DEGREES AWARDED</b>	<b>23 – 25</b>
- First and Higher Degrees (On-campus Scotland and International)	23 – 24
- First and Higher Degrees (On-campus Dubai)	25
<b>6 UNDERGRADUATE STUDENT PROGRESSION (ALL STUDENTS/ FRESHERS ONLY, SCOTLAND AND DUBAI CAMPUSES)</b>	<b>26 – 29</b>
<b>7 GRADUATE FIRST DESTINATIONS (FIRST DEGREES)</b>	<b>30 – 31</b>
<b>8 NATIONAL STUDENT SURVEY RESULTS</b>	<b>32 – 33</b>
<b>9 STAFF NUMBERS</b>	<b>34</b>

**If you would like a large print version of this document please contact the Secretariat, Tel: 0131 451 3365.**

## Notes

This report is published annually. Suggestions for future enhancements are welcome. Please direct any comments or enquiries to the Secretariat:

Lorna Kirkwood-Smith, Tel: 0131 451 3631, Email: [L.A.Kirkwood-Smith@hw.ac.uk](mailto:L.A.Kirkwood-Smith@hw.ac.uk) or  
Sam Roger, Tel: 0131 451 3365, Email: [S.S.Roger@hw.ac.uk](mailto:S.S.Roger@hw.ac.uk)

Student numbers information is extracted from a 'snap-shot' of the student database at a census date in early December each year.

The report is available on the staff section of the University's web home page at [www.hw.ac.uk/documents/annual\\_statistics.pdf](http://www.hw.ac.uk/documents/annual_statistics.pdf) and is included in the University's Freedom of Information Publication Scheme at: [www.hw.ac.uk/foi/](http://www.hw.ac.uk/foi/)

More detailed reporting may be available from contributing sections. Contact details are provided below.

July 2015

## CONTACTS

### **Academic Registry and Student Services:**

Jean Campbell, Management Information Analyst, Ext: 3383, Email: [J.M.Campbell@hw.ac.uk](mailto:J.M.Campbell@hw.ac.uk)  
Nick Thow, Director, Careers Advisory Service, Ext: 3392, Email: [N.W.Thow@hw.ac.uk](mailto:N.W.Thow@hw.ac.uk) (First Destination data)

### **Secretariat:**

Lorna Kirkwood-Smith, Head, Ext: 3631, Email: [L.A.Kirkwood-Smith@hw.ac.uk](mailto:L.A.Kirkwood-Smith@hw.ac.uk)  
Sam Roger, Assistant to the Secretariat, Ext 3365, Email: [S.S.Roger@hw.ac.uk](mailto:S.S.Roger@hw.ac.uk)

### **Recruitment & Admissions:**

Michael Bates, Director, Ext: 3450, Email: [M.Bates@hw.ac.uk](mailto:M.Bates@hw.ac.uk) (Recruitment and Admissions data)

### **Edinburgh Business School:**

Adrian Carberry, Administration Manager, Ext: 3938, Email: [A.Carberry@hw.ac.uk](mailto:A.Carberry@hw.ac.uk)

## HERIOT-WATT UNIVERSITY: PROFILE AT A GLANCE

**Founded:** 1821. Granted university status by Royal Charter in 1966.

**Campus Locations:** Edinburgh, Galashiels, Orkney, Dubai, Malaysia

The University's main Edinburgh campus comprises 380 acres of parkland and incorporates the Edinburgh Research Park established in 1971 as the first science park of its kind in the UK. In excess of 40 companies are currently based on the Research Park. The University's Scottish Borders Campus at Netherdale in Galashiels is home to the School of Textiles and Design. The Campus is shared with Scottish Borders College.

The University's International Centre for Island Technology based in Stromness, Orkney Islands (Orkney Campus), is part of the University's School of Life Sciences. The Centre concentrates on renewable energy, particularly marine energy.

In November 2011, Heriot-Watt University won a major international tender to establish a new purpose-built University Campus in Putrajaya, Malaysia. The Heriot-Watt Malaysia Campus will create opportunities for up to 4,000 undergraduate and postgraduate students to study degree-level programmes in science, business, engineering, mathematics and design. The Campus has been open since early 2013 offering a range of postgraduate programmes and the Undergraduate Foundation Programme. Substantial growth in undergraduate and postgraduate programmes has taken place since autumn 2014 when the new campus building formally opened.

### Student population:

#### On-campus (Edinburgh, Orkney):-

- 6,132 undergraduate (including exchange and visiting students)
- 1,402 postgraduate taught course
- 727 postgraduate research

#### On-campus (Scottish Borders Campus)

- 600 undergraduate (including exchange and visiting students)
- 13 postgraduate taught course
- 16 postgraduate research

#### On-campus (Dubai)

- 2,467 undergraduate
- 1,169 postgraduate taught course

#### On-campus (Malaysia)

- 297 undergraduate
- 121 postgraduate taught course

More than one third of the University's 'on campus' students studying in Scotland are from outside of the UK making Heriot-Watt one of the most internationally diversified of any UK universities.

**Transnational programmes** (independent study in 144 countries worldwide or through a network of 46 Approved Learning Partners (ALPs). In HESA reporting year ending 31 July 2014 there were:

- 9,749 active matriculated ALP students
- 4,941 active matriculated independent (distance learning) students

Including all active students (registered or not yet registered for full degree programmes), the University had a population of more than 18,000 transnational programme students.

**Staff population:** Total: 2,142 (headcount) of which:-

#### On-Campus (Scottish Campus):-

- 557 academic
- 216 research staff
- 529 professional (non academic)
- 611 other staff (incl non standard contract staff)

#### On-Campus (Dubai Campus):-

- 115 academic
- 13 professional (non academic)
- 9 other staff (incl non standard contract staff)

#### On-Campus (Malaysia Campus):-

- 41 academic
- 51 other staff (incl non standard contract staff)



## STUDENT NUMBERS (ON CAMPUS IN SCOTLAND): 2012/13 - 2014/15

## UNDERGRADUATE students by attendance level and gender

	2014/15					2013/14					2012/13						
	ft	pt	Total	%	% change yr/yr	ft	pt	Total	%	% change yr/yr	ft	pt	Total	%	% change yr/yr		
<b>Total</b>	<b>6,420</b>	<b>83</b>	<b>6,503</b>	<b>100</b>	<b>4</b>	<b>Total</b>	<b>6,179</b>	<b>94</b>	<b>6,273</b>	<b>100</b>	<b>8</b>	<b>Total</b>	<b>5,706</b>	<b>94</b>	<b>5,800</b>	<b>100</b>	<b>3</b>
Female	2,826	28	2,854	44	4	Female	2,706	32	2,738	44	10	Female	2,465	30	2,495	43	5
Male	3,594	55	3,649	56	3	Male	3,473	62	3,535	56	7	Male	3,241	64	3,305	57	1

Includes home students on a year abroad or on placement as part of their studies.

Excludes registered incoming exchange, non-graduating and visiting students. These are detailed on page 17.

## POSTGRADUATE TAUGHT COURSE students by attendance level and gender

	2014/15					2013/14					2012/13						
	ft	pt	Total	%	% change yr/yr	ft	pt	Total	%	% change yr/yr	ft	pt	Total	%	% change yr/yr		
<b>Total</b>	<b>1,305</b>	<b>110</b>	<b>1,415</b>	<b>100</b>	<b>2</b>	<b>Total</b>	<b>1,288</b>	<b>94</b>	<b>1,382</b>	<b>100</b>	<b>-3</b>	<b>Total</b>	<b>1,308</b>	<b>112</b>	<b>1,420</b>	<b>100</b>	<b>-3</b>
Female	523	52	575	41	7	Female	498	40	538	39	-6	Female	523	47	570	40	-3
Male	782	58	840	59		Male	790	54	844	61	-1	Male	785	65	850	60	-4

Excludes staff registrations for the Postgraduate Certificate in Academic Practice.

Excludes very small numbers of registered incoming exchange, non-graduating and other visiting students.

## POSTGRADUATE RESEARCH students by attendance level and gender

	2014/15					2013/14					2012/13						
	ft	pt	Total	%	% change yr/yr	ft	pt	Total	%	% change yr/yr	ft	pt	Total	%	% change yr/yr		
<b>Total</b>	<b>677</b>	<b>66</b>	<b>743</b>	<b>100</b>	<b>3</b>	<b>Total</b>	<b>663</b>	<b>61</b>	<b>724</b>	<b>100</b>	<b>10</b>	<b>Total</b>	<b>608</b>	<b>52</b>	<b>660</b>	<b>100</b>	<b>18</b>
Female	213	22	235	32	4	Female	205	21	226	31	18	Female	176	16	192	29	18
Male	464	44	508	68	2	Male	458	40	498	69	6	Male	432	36	468	71	18

Excludes small numbers of active registered students recorded as "writing up".

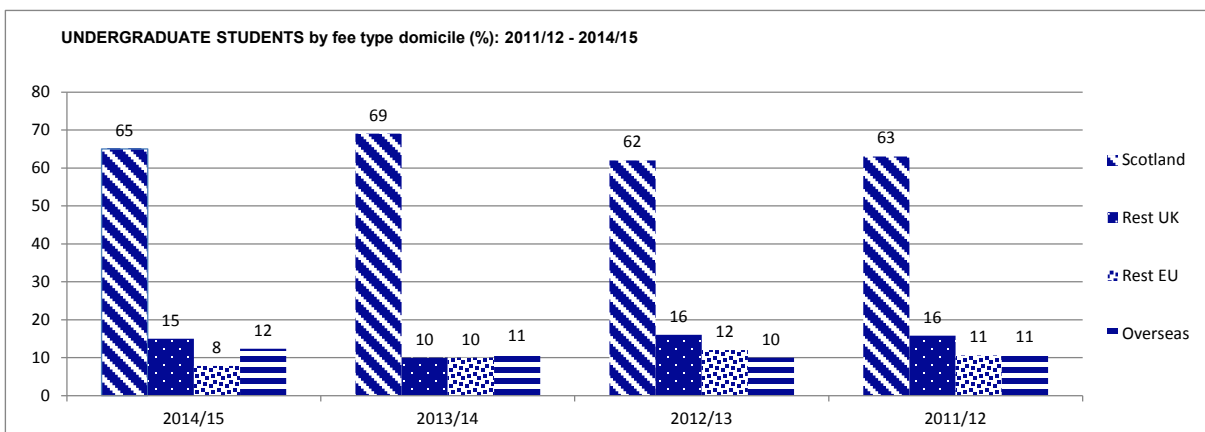
Excludes small numbers of registered incoming exchange, non-graduating and visiting scholars.

## ALL STUDENTS by fees status (Scotland, Rest of UK, other EU, overseas)

	2014/15					2013/14					2012/13						
	UG	PGT	PGR	Total	% change yr/yr	UG	PGT	PGR	Total	% change yr/yr	UG	PGT	PGR	Total	% change yr/yr		
<b>Total</b>	<b>6,503</b>	<b>1,415</b>	<b>743</b>	<b>8,661</b>	<b>3</b>	<b>Total</b>	<b>6,273</b>	<b>1,382</b>	<b>724</b>	<b>8,379</b>	<b>6</b>	<b>Total</b>	<b>5,800</b>	<b>1,420</b>	<b>660</b>	<b>7,880</b>	<b>3</b>
SCO	4,011	209	165	4,385	-9	SCO	4,319	252	225	4,796	20	SCO	3,587	261	155	4,003	
RUK	1,180	56	57	1,293	97	RUK	602	51	5	658	-37	RUK	912	61	70	1,043	
EU	507	342	173	1,022		EU	623	357	143	1,123		EU	665	330	124	1,119	-3
OS	805	808	348	1,961	9	OS	729	722	351	1,802	5	OS	636	768	311	1,715	5

Refer to inclusions/exclusions listed above.

In 2012/13 the reporting methodology was changed to differentiate Scottish students and rest of the UK (RUK).









**UNDERGRADUATE FRESHER STUDENTS BY GENDER: 2012/13 - 2014/15**  
On-campus - Scotland

	2014/15		2013/14		2012/13				
	Gend	%	Gend	%	Gend	%			
<b>UNIVERSITY TOTAL</b>		<b>1,799</b>	<b>43</b>	<b>2,131</b>	<b>45</b>	<b>1,775</b>	<b>45</b>		
<b>BUILT ENVIRONMENT</b>		<b>248</b>	<b>22</b>	<b>196</b>	<b>27</b>	<b>217</b>	<b>26</b>		
Architectural Engineering	F	14	42	F	18	53	F	13	35
	M	19	58	M	16	47	M	24	65
<b>Total</b>		<b>33</b>		<b>34</b>		<b>37</b>			
Civil Engineering	F	17	13	F	18	17	F	28	23
	M	114	87	M	87	83	M	94	77
<b>Total</b>		<b>131</b>		<b>105</b>		<b>122</b>			
Construction Management & Surveying	F	4	9	F	5	14	F	9	25
	M	43	91	M	30	86	M	27	75
<b>Total</b>		<b>47</b>		<b>35</b>		<b>36</b>			
Urban Studies	F	19	51	F	12	55	F	6	27
	M	18	49	M	10	45	M	16	73
<b>Total</b>		<b>37</b>		<b>22</b>		<b>22</b>			
<b>ENGINEERING &amp; PHYSICAL SCIENCES</b>		<b>393</b>	<b>23</b>	<b>491</b>	<b>24</b>	<b>480</b>	<b>25</b>		
Chemical Engineering	F	25	30	F	32	30	F	31	32
	M	59	70	M	76	70	M	65	68
<b>Total</b>		<b>84</b>		<b>108</b>		<b>96</b>			
Chemistry	F	30	41	F	37	41	F	48	51
	M	43	59	M	53	59	M	47	49
<b>Total</b>		<b>73</b>		<b>90</b>		<b>95</b>			
Combined Studies (BSc/BEng)	F	9	38	F	13	43	F	6	24
	M	15	63	M	17	57	M	19	76
<b>Total</b>		<b>24</b>		<b>30</b>		<b>25</b>			
Electrical, Electronic & Computer Engineering	F	3	6	F	12	18	F	3	4
	M	51	94	M	56	82	M	66	96
<b>Total</b>		<b>54</b>		<b>68</b>		<b>69</b>			
Mechanical Engineering	F	14	15	F	11	11	F	14	12
	M	77	85	M	93	89	M	104	88
<b>Total</b>		<b>91</b>		<b>104</b>		<b>118</b>			
Physics	F	11	16	F	14	15	F	16	21
	M	56	84	M	77	85	M	61	79
<b>Total</b>		<b>67</b>		<b>91</b>		<b>77</b>			
<b>LIFE SCIENCES</b>		<b>253</b>	<b>59</b>	<b>361</b>	<b>61</b>	<b>151</b>	<b>68</b>		
Biology	F	58	49	F	83	48	F	46	61
	M	60	51	M	91	52	M	30	39
<b>Total</b>		<b>118</b>		<b>174</b>		<b>76</b>			
Psychology	F	91	67	F	137	73	F	57	76
	M	44	33	M	50	27	M	18	24
<b>Total</b>		<b>135</b>		<b>187</b>		<b>75</b>			
<b>MANAGEMENT &amp; LANGUAGES</b>		<b>420</b>	<b>50</b>	<b>585</b>	<b>51</b>	<b>478</b>	<b>49</b>		
Accountancy & Finance	F	59	46	F	70	51	F	42	45
	M	69	54	M	66	49	M	52	55
<b>Total</b>		<b>128</b>		<b>136</b>		<b>94</b>			
Combined Studies (BA)	F			F			F		
	M			M	1	100	M		
<b>Total</b>				<b>1</b>					
Economics	F	8	21	F	23	28	F	17	20
	M	31	79	M	60	72	M	70	80
<b>Total</b>		<b>39</b>		<b>83</b>		<b>87</b>			
Languages	F	70	80	F	101	77	F	80	81
	M	18	20	M	31	23	M	19	19
<b>Total</b>		<b>88</b>		<b>132</b>		<b>99</b>			
Management	F	64	43	F	87	44	F	80	49
	M	84	57	M	113	57	M	83	51
<b>Total</b>		<b>148</b>		<b>200</b>		<b>163</b>			
Management (Scottish Borders Campus)	F			F	8	50	F	12	55
	M			M	8	50	M	10	45
<b>Total</b>				<b>16</b>		<b>22</b>			
Foundation English/Interpreting Studies	F	10	59	F	10	59	F	5	
	M	7	41	M	7	41	M	8	
<b>Total</b>		<b>17</b>		<b>17</b>		<b>13</b>			
<b>MATHEMATICAL &amp; COMPUTER SCIENCES</b>		<b>315</b>	<b>32</b>	<b>317</b>	<b>34</b>	<b>253</b>	<b>38</b>		
Actuarial Mathematics & Statistics	F	55	43	F	52	41	F	48	44
	M	74	57	M	74	59	M	60	56
<b>Total</b>		<b>129</b>		<b>126</b>		<b>108</b>			
Computer Science	F	5	7	F	9	10	F	5	10
	M	70	93	M	83	90	M	45	90
<b>Total</b>		<b>75</b>		<b>92</b>		<b>50</b>			
Mathematics	F	40	36	F	47	47	F	43	45
	M	71	64	M	52	53	M	52	55
<b>Total</b>		<b>111</b>		<b>99</b>		<b>95</b>			
<b>TEXTILES &amp; DESIGN</b>		<b>170</b>	<b>96</b>	<b>181</b>	<b>91</b>	<b>196</b>	<b>93</b>		
Textiles & Design	F	163	96	F	165	91	F	183	93
	M	7	4	M	16	9	M	13	7

Percentage totals for Schools relate to the female population.  
Note inclusions/exclusions detailed on page 5.



POSTGRADUATE TAUGHT COURSE STUDENTS BY SCHOOL/PG/PROGRAMME AND FEE TYPE 2012/13 - 2014/15  
On-campus - Scotland

SCHOOL/Programme	2014/15										2013/14										2012/13																	
	SCO		UK		EU		OS		Full Tot		SCO		UK		EU		OS		Full Tot		SCO		UK		EU		OS		Full Tot									
	ft	pt	ft	pt	ft	pt	ft	pt	ft	pt	ft	pt	ft	pt	ft	pt	ft	pt	ft	pt	ft	pt	ft	pt	ft	pt	ft	pt	ft	pt								
<b>UNIVERSITY TOTAL</b>	149	63	212	50	55	313	30	343	793	12	805	1,415	192	60	252	47	4	51	335	22	357	714	8	722	1,382	176	85	261	55	6	61	313	17	330	764	4	788	1,420
<b>BUILT ENVIRONMENT</b>	31	17	48	6	5	11	36	10	46	83	1	84	189	44	18	62	4	2	6	43	5	48	90	90	206	31	47	78	6	6	39	6	45	113	1	114	243	
Architectural Engineering	2	4	6		3	1	4	8		8		8	18	10	2	12		2	1	3	13		13	28	2	6	8		7	1	8	9		9	25			
Civil Engineering	13	1	14	3	2	5	15	20		20	54	14	3	17	1	1	21	21	25		25	64	11	8	19	1	1	22	1	23	31	31	31	74		74		
Construction Management & Surveying	4	9	13	1	1	8	3	11	33	1	34	59	8	8	16	1	1	10	11	32		32	60	7	11	18	1	3	3	35	35	57		57				
Urban Studies	12	3	15	2	3	5	10	6	16	22	22	58	12	5	17	2	2	4	10	3	13	20	20	54	11	22	33	4	4	7	4	11	38	1	39	87		
<b>ENGINEERING &amp; PHYSICAL SCIENCES</b>	18	5	23				51	1	52	76	76	151	17	4	21	3	3	61	1	62	61	61	147	147	28	2	30	6	6	54	71	54	71	161		161		
Chemical Engineering					6	6	14		14	20		20	5	5	1	1	5	5	4		4	15	15	4	4	4	1	1	1	1	1	5	5	11		11		
Chemistry					19	19	49		49	70		70	2	2			18	18	38		38	58	58	10	10	2	2	13	13	34	34	59		59				
Electrical, Electronic & Computer Engineering	12	5	17		23	1	24	11		11	52	8	4	12	2	2	33	1	34	14		14	62	7	2	9	2	2	31	23	23	65		65				
Mechanical Engineering	4		4		3	3	2		2	9		9	2	2			2	2	2		2	6	6	2	2	2	2	1	1	4	4	2	2	9		9		
Physics	46	12	58	15	15	26	6	32	53	53	158	36	7	43	16	16	25	3	28	54		54	141	31	4	35	11	1	12	20	1	21	56	1	57	125		
Biology	40	7	47	14	14	19	4	23	43	43	127	29	3	32	13	13	18	3	21	43		43	109	6	2	8	1	1	6	6	16	16	31		31			
Psychology	6	5	11	1	1	7	2	9	10	10	31	7	4	11	3	3	7	7	11		11	32	25	2	27	11	11	14	1	15	40	1	41	94		94		
<b>MANAGEMENT &amp; LANGUAGES</b>	24	12	36	5	5	136	9	145	324	6	330	516	26	14	40	3	3	120	9	129	244	3	247	419	32	13	45	13	1	14	128	8	136	284	479		479	
Accountancy & Finance	3		3		22	22	91	1	92	117		117	7	1	8		22	1	23	54		54	85	6	2	8	3	3	35	1	36	77		77	124			
Economics					2	2		2		2		2																								0		
Languages	9	1	10	3	3	28	3	31	27	2	29	73	3	3	6	2	2	19	2	21	21	1	22	51	9	2	11	4	1	5	24	24	36	76		76		
Management	12	11	23	2	2	86	6	92	204	3	207	324	16	10	26	1	1	79	6	85	169	2	171	283	17	9	26	6	6	69	7	76	171	171	279			
<b>MATHEMATICAL &amp; COMPUTER SCIENCES</b>	13	7	20	6	6	41	3	44	140	2	142	212	30	5	35	8	8	37	3	40	113	1	114	197	17	6	23	8	8	32	1	33	115	115	179			
Actuarial Mathematics & Statistics	8		8	3	3	11	11	96	1	97	119	11	1	12	7	7	17	17	76		76	112	9	1	10	6	6	11	1	12	70	70	98		98			
Computer Science	4	6	10	2	2	21	3	24	34	1	35	71	10	4	14	1	1	12	3	15	24	1	25	55	4	2	6	6	13	13	32	32	51		51			
Mathematics	1	1	2	1	1	9	9	10		10	22	9	9	9	9	8	8	8	8	13		13	30	4	3	7	2	2	8	8	13	13	30		30			
<b>TEXTILES &amp; DESIGN</b>	3		3	1	1			8	1	9	13	2		2	2	4	4	4	4	8	8	8	14	6	6	6	6	4	4	4	4	17	17	27		27		
<b>PETROLEUM ENGINEERING</b>	13	0	13	16	0	16	19	0	19	107	1	108	156	34		34	13	13	44		44	136	1	137	228	29		29	10	10	35	35	100	100	174			
<b>EDINBURGH BUSINESS SCHOOL</b>	1	10	11	1	1	4	1	5	2	1	3	20	3	12	15	2	2	1	1	2	8	3	11	30	2	13	15	1	4	5	1	2	8	2	10	32		

Note inclusions/exclusions detailed on page 5.  
In 2012/13 the reporting methodology was changed to differentiate Scottish students and rest of the UK.

POSTGRADUATE TAUGHT COURSE FRESHER STUDENTS BY GENDER 2012/13 - 2014/15

On-campus - Scotland

	2014/15			2013/14			2012/13		
	Gend	Total	%	Gend	Total	%	Gend	Total	%
<b>UNIVERSITY TOTAL</b>		<b>1,274</b>	<b>40</b>		<b>1,264</b>	<b>38</b>		<b>1,279</b>	<b>41</b>
<b>BUILT ENVIRONMENT</b>		<b>170</b>	<b>36</b>		<b>189</b>	<b>29</b>		<b>185</b>	<b>30</b>
Architectural Engineering	F	6	38	F	10	38	F	9	43
	M	10	63	M	16	62	M	12	57
<b>Total</b>		<b>16</b>			<b>26</b>			<b>21</b>	
Civil Engineering	F	16	30	F	8	13	F	12	20
	M	37	70	M	53	87	M	47	80
<b>Total</b>		<b>53</b>			<b>61</b>			<b>59</b>	
Construction Management & Surveying	F	13	27	F	17	30	F	13	26
	M	35	73	M	39	70	M	37	74
<b>Total</b>		<b>48</b>			<b>56</b>			<b>50</b>	
Urban Studies	F	27	51	F	19	41	F	21	38
	M	26	49	M	27	59	M	34	62
<b>Total</b>		<b>53</b>			<b>46</b>			<b>55</b>	
<b>ENGINEERING &amp; PHYSICAL SCIENCES</b>		<b>131</b>	<b>15</b>		<b>124</b>	<b>23</b>		<b>136</b>	<b>19</b>
Chemical Engineering	F	3	15	F	4	31	F	3	27
	M	17	85	M	9	69	M	8	73
<b>Total</b>		<b>20</b>			<b>13</b>			<b>11</b>	
Chemistry	F			F	3	60	F	5	38
	M			M	2	40	M	8	62
<b>Total</b>					<b>5</b>			<b>13</b>	
Electrical, Electronic & Computer Engineering	F	7	13	F	9	22	F	4	10
	M	46	87	M	32	78	M	36	90
<b>Total</b>		<b>53</b>			<b>41</b>			<b>40</b>	
Mechanical Engineering	F	7	14	F	11	19	F	11	17
	M	42	86	M	48	81	M	52	83
<b>Total</b>		<b>49</b>			<b>59</b>			<b>63</b>	
Physics	F	2	22	F	2	33	F	3	33
	M	7	78	M	4	67	M	6	67
<b>Total</b>		<b>9</b>			<b>6</b>			<b>9</b>	
<b>LIFE SCIENCES</b>		<b>147</b>	<b>37</b>		<b>138</b>	<b>38</b>		<b>119</b>	<b>46</b>
Biology	F	46	38	F	31	29	F	42	46
	M	74	62	M	76	71	M	49	54
<b>Total</b>		<b>120</b>			<b>107</b>			<b>91</b>	
Psychology	F	9	33	F	21	68	F	13	46
	M	18	67	M	10	32	M	15	54
<b>Total</b>		<b>27</b>			<b>31</b>			<b>28</b>	
<b>MANAGEMENT &amp; LANGUAGES</b>		<b>441</b>	<b>56</b>		<b>377</b>	<b>55</b>		<b>453</b>	<b>55</b>
Accountancy & Finance	F	51	47	F	39	48	F	59	48
	M	57	53	M	43	52	M	63	52
<b>Total</b>		<b>108</b>			<b>82</b>			<b>122</b>	
Economics	F			F			F		
	M	2	100	M			M		
<b>Total</b>		<b>2</b>							
Languages	F	43	73	F	36	78	F	52	73
	M	16	27	M	10	22	M	19	27
<b>Total</b>		<b>59</b>			<b>46</b>			<b>71</b>	
Management	F	154	57	F	131	53	F	140	54
	M	118	43	M	118	47	M	120	46
<b>Total</b>		<b>272</b>			<b>249</b>			<b>260</b>	
<b>MATHEMATICAL &amp; COMPUTER SCIENCES</b>		<b>200</b>	<b>40</b>		<b>179</b>	<b>39</b>		<b>169</b>	<b>38</b>
Actuarial Mathematics & Statistics	F	59	50	F	43	43	F	40	42
	M	60	50	M	58	57	M	56	58
<b>Total</b>		<b>119</b>			<b>101</b>			<b>96</b>	
Computer Science	F	13	22	F	15	30	F	17	36
	M	47	78	M	35	70	M	30	64
<b>Total</b>		<b>60</b>			<b>50</b>			<b>47</b>	
Mathematics	F	8	38	F	12	43	F	8	31
	M	13	62	M	16	57	M	18	69
<b>Total</b>		<b>21</b>			<b>28</b>			<b>26</b>	
<b>TEXTILES &amp; DESIGN</b>		<b>13</b>	<b>77</b>		<b>14</b>	<b>93</b>		<b>27</b>	<b>81</b>
Textiles & Design	F	10	77	F	13	93	F	22	81
	M	3	23	M	1	7	M	5	19
<b>PETROLEUM ENGINEERING</b>		<b>152</b>	<b>19</b>		<b>226</b>	<b>26</b>		<b>171</b>	<b>19</b>
Petroleum Engineering	F	29	19	F	58	26	F	33	19
	M	123	81	M	168	74	M	138	81
<b>EDINBURGH BUSINESS SCHOOL</b>		<b>20</b>	<b>30</b>		<b>17</b>	<b>24</b>		<b>19</b>	<b>63</b>
Edinburgh Business School	F	6	30	F	4	24	F	12	63
	M	14	70	M	13	76	M	7	37

Percentage totals for Schools/Institutes relate to the female population.  
Note inclusions/exclusions detailed on page 5.



POSTGRADUATE RESEARCH STUDENTS BY SCHOOL/PROGRAMME AND FEE TYPE: 2012/13 - 2014/15

On-campus - Scotland

SCHOOL/Programme	2014/15												2013/14												2012/13												
	SCO				RUK				EU				OS				SCO				RUK				EU				OS								
	ft	pt	Tot	Full Tot	ft	pt	Tot	Full Tot	ft	pt	Tot	Full Tot	ft	pt	Tot	Full Tot	ft	pt	Tot	Full Tot	ft	pt	Tot	Full Tot	ft	pt	Tot	Full Tot									
<b>UNIVERSITY TOTAL</b>	146	19	165	53	4	57	161	12	173	317	31	348	743	200	25	225	5	129	14	143	329	22	351	724	136	19	155	65	5	70	113	11	124	294	17	311	660
<b>BUILT ENVIRONMENT</b>	47	5	22	5	1	6	11	1	12	72	17	89	129	27	8	35	2	7	3	10	82	10	92	139	17	5	22	7	1	8	7	7	58	8	66	103	
Civil Engineering			4	1	1	2	4	4	23	23	23	33	7	2	9	1	1	2	21	1	22	1	22	33	5	1	6	4	1	5	1	14	14	14	26		
Construction Management & Surveying			6	2	8	2	2	4	4	26	16	42	56	10	3	13	1	5	5	37	8	45	64	64	8	1	9	1	1	4	4	28	7	35	49		
Urban Studies			7	3	10	2	2	3	1	4	23	24	40	10	3	13	1	1	2	3	24	1	25	42	10	3	7	2	2	2	16	1	17	28			
<b>ENGINEERING &amp; PHYSICAL SCIENCES</b>	69	3	72	36	36	93	2	95	82	2	84	287	98	2	100	1	67	4	71	75	1	76	248	66	2	68	40	40	67	3	70	67	2	69	247		
Chemical Engineering			5	1	6	2	2	7	12	12	12	27	8	8	8	1	5	5	10	10	10	10	24	4	4	4	3	3	5	5	8	8	8	20			
Chemistry			15	8	8	8	8	6	6	6	6	37	17	17	17	6	6	6	6	6	6	5	28	14	14	14	4	4	4	11	11	3	3	32			
Electrical, Electronic & Computer Engineering			8	8	2	2	26	2	28	17	2	19	57	8	8	8	10	3	13	16	1	17	38	8	8	8	1	1	10	2	12	20	1	21	42		
Mechanical Engineering			10	1	11	2	2	12	12	20	20	45	13	1	14	12	12	1	13	22	22	22	49	12	1	13	4	4	9	1	10	19	19	19	46		
Physics			31	1	32	22	22	40	40	27	27	121	52	1	53	34	34	34	34	34	34	22	109	28	1	29	28	28	32	32	17	1	18	107			
<b>LIFE SCIENCES</b>	10	2	12	4	1	5	14	1	15	14	1	15	47	23	4	27	1	10	10	19	1	20	58	14	1	15	6	1	7	1	1	28	28	51			
Biology			4	1	5	3	3	1	4	11	1	12	24	12	1	13	1	2	2	16	1	17	33	9	1	10	3	1	4	1	1	24	24	39			
Life Sciences			2	2	1	1	2	9	9	3	3	16	6	6	1	7	7	7	7	7	1	1	15	3	3	3	3	3	3	3	2	2	8	8			
Psychology			2	1	3	2	2	2	2	2	2	5	5	5	2	7	1	1	1	1	1	1	9	1	9	2	2	2	2	1	1	1	1	3	3		
Sport & Exercise Science			2	2	2	2	2	2	2	2	2	2	2	2	2	2	2	2	2	2	2	2	2	2	2	2	2	2	2	2	2	2	2	2	2		
<b>MANAGEMENT &amp; LANGUAGES</b>	22	3	25	6	1	7	19	4	23	35	2	37	92	18	3	21	19	2	21	32	2	34	76	11	2	13	1	1	16	4	20	23	2	25	59		
Accountancy & Finance			1	1	1	1	1	1	1	12	2	14	17	2	1	3	1	1	1	13	1	14	18	2	1	3	1	1	1	1	1	9	9	13			
Economics			2	2	1	1	4	1	5	9	9	17	2	2	2	6	6	6	6	6	5	5	13	3	3	3	3	3	4	4	5	1	6	13			
Languages			5	5	1	1	5	1	6	6	6	18	4	4	6	4	4	4	4	4	5	8	8	19	1	1	2	1	1	1	2	6	6	6	15		
Management			14	3	17	3	1	4	9	2	11	8	40	10	10	10	8	8	8	8	9	6	7	26	5	5	5	5	7	2	9	3	1	4	18		
<b>MATHEMATICAL &amp; COMPUTER SCIENCES</b>	21	1	22	1	1	16	3	19	38	2	40	82	23	3	26	1	18	3	21	46	46	94	20	5	25	7	1	8	18	2	20	47	1	48	101		
Actuarial Mathematics & Statistics			3	3	2	1	3	9	1	10	16	3	1	4	1	4	3	1	4	11	11	19	2	1	3	1	1	2	2	2	8	8	14				
Computer Science			7	7	1	1	6	2	8	16	1	17	33	10	1	11	9	2	11	19	19	41	13	3	16	1	1	1	9	2	11	23	1	24	52		
Mathematics			11	1	12	1	8	8	13	13	33	33	10	1	11	1	6	6	6	6	6	16	16	34	5	1	6	6	7	7	16	16	35				
<b>TEXTILES &amp; DESIGN</b>	4	2	6	2	2	6	2	8	10	10	16	2	1	3	2	1	3	1	11	11	11	14	2	2	2	2	2	2	2	1	1	1	8	8	12		
<b>PETROLEUM ENGINEERING</b>	3	3	6	2	2	8	1	9	66	7	73	90	9	4	13	8	2	10	64	8	72	95	6	4	10	4	1	5	3	2	5	63	4	67	87		

Note inclusions/exclusions detailed on page 5.  
In 2012/13 the reporting methodology was changed to differentiate Scottish students and rest of the UK (RUK).

**POSTGRADUATE RESEARCH FRESHER STUDENTS BY GENDER: 2012/13 - 2014/15**  
**On-campus - Scotland**

	2014/15			2013/14			2012/13		
	Gend	Total	%	Gend	Total	%	Gend	Total	%
<b>UNIVERSITY TOTAL</b>		<b>165</b>	<b>33</b>		<b>156</b>	<b>39</b>		<b>143</b>	<b>31</b>
<b>BUILT ENVIRONMENT</b>		<b>15</b>	<b>40</b>		<b>23</b>	<b>39</b>		<b>19</b>	<b>58</b>
Civil Engineering	F	4	67	F	3	38	F	3	75
	M	2	33	M	5	62	M	1	25
<b>Total</b>		<b>6</b>			<b>8</b>			<b>4</b>	
Construction Management & Surveying	F	1	20	F	2	29	F	5	50
	M	4	80	M	5	71	M	5	50
<b>Total</b>		<b>5</b>			<b>7</b>			<b>10</b>	
Urban Studies	F	1	25	F	4	50	F	3	60
	M	3	75	M	4	50	M	2	40
<b>Total</b>		<b>4</b>			<b>8</b>			<b>5</b>	
<b>ENGINEERING &amp; PHYSICAL SCIENCES</b>		<b>77</b>	<b>19</b>		<b>55</b>	<b>22</b>		<b>58</b>	<b>28</b>
Chemical Engineering	F			F	2	29	F	5	50
	M	8	100	M	5	71	M	5	50
<b>Total</b>		<b>8</b>			<b>7</b>			<b>10</b>	
Chemistry	F	5	36	F	2	29	F	6	55
	M	9	64	M	5	71	M	5	45
<b>Total</b>		<b>14</b>			<b>7</b>			<b>11</b>	
Electrical, Electronic & Computer Engineering	F	3	13	F	1	14	F	2	20
	M	20	87	M	6	86	M	8	80
<b>Total</b>		<b>23</b>			<b>7</b>			<b>10</b>	
Mechanical Engineering	F	1	10	F	3	38	F		
	M	9	90	M	5	62	M	4	100
<b>Total</b>		<b>10</b>			<b>8</b>			<b>4</b>	
Physics	F	6	27	F	4	15	F	3	13
	M	16	73	M	22	85	M	20	87
<b>Total</b>		<b>22</b>			<b>26</b>			<b>23</b>	
<b>LIFE SCIENCES</b>		<b>11</b>	<b>73</b>		<b>12</b>	<b>92</b>		<b>5</b>	<b>40</b>
Biology	F	4	80	F	5	83	F		
	M	1	20	M	1	17	M	1	100
<b>Total</b>		<b>5</b>			<b>6</b>			<b>1</b>	
Life Sciences	F	4	80	F	3	100	F	2	50
	M	1	20	M			M	2	50
<b>Total</b>		<b>5</b>			<b>3</b>			<b>4</b>	
Psychology	F			F	3	100	F		
	M			M			M		
<b>Total</b>					<b>3</b>				
Sport & Exercise Science	F			F			F		
	M	1		M			M		
<b>Total</b>		<b>1</b>							
<b>MANAGEMENT &amp; LANGUAGES</b>		<b>24</b>	<b>54</b>		<b>28</b>	<b>68</b>		<b>23</b>	<b>43</b>
Accountancy & Finance	F	3	50	F	2	40	F	1	25
	M	3	50	M	3	60	M	3	75
<b>Total</b>		<b>6</b>			<b>5</b>			<b>4</b>	
Economics	F	2	50	F	3	43	F	2	40
	M	2	50	M	4	57	M	3	60
<b>Total</b>		<b>4</b>			<b>7</b>			<b>5</b>	
Languages	F	3	100	F	9	100	F	5	83
	M			M			M	1	17
<b>Total</b>		<b>3</b>			<b>9</b>			<b>6</b>	
Management	F	5	45	F	5	71	F	2	25
	M	6	55	M	2	29	M	6	75
<b>Total</b>		<b>11</b>			<b>7</b>			<b>8</b>	
<b>MATHEMATICAL &amp; COMPUTER SCIENCES</b>		<b>13</b>	<b>38</b>		<b>21</b>	<b>33</b>		<b>22</b>	<b>9</b>
Actuarial Mathematics & Statistics	F			F	1	20	F	1	14
	M			M	4	80	M	6	86
<b>Total</b>					<b>5</b>			<b>7</b>	
Computer Science	F	1	25	F	4	44	F	8	100
	M	3	75	M	5	56	M	8	100
<b>Total</b>		<b>4</b>			<b>9</b>			<b>8</b>	
Mathematics	F	4	44	F	2	29	F	1	14
	M	5	56	M	5	71	M	6	86
<b>Total</b>		<b>9</b>			<b>7</b>			<b>7</b>	
<b>TEXTILES &amp; DESIGN</b>		<b>4</b>	<b>100</b>		<b>3</b>	<b>33</b>		<b>1</b>	<b>100</b>
Textiles & Design	F	4	100	F	1	33	F	1	100
	M			M	2	67	M		
<b>PETROLEUM ENGINEERING</b>		<b>21</b>	<b>14</b>		<b>14</b>	<b>14</b>		<b>15</b>	<b>13</b>
Petroleum Engineering	F	3	14	F	2	14	F	2	13
	M	18	86	M	12	86	M	13	87

Percentage totals for Schools/Institutes relate to the female population.  
 Note inclusions/exclusions detailed on page 5.



**UNDERGRADUATE STUDENTS BY SCHOOL/PROGRAMME, ATTENDANCE LEVEL AND GENDER: 2011/12 - 2014/15**  
**On-campus - Dubai**

SCHOOL/Programme	2014/15					2013/14					2012/13					2011/12				
	Gend	ft	pt	Total	%	Gend	ft	pt	Total	%	Gend	ft	pt	Total	%	Gend	ft	pt	Total	%
<b>UNIVERSITY TOTAL</b>		<b>2,411</b>	<b>56</b>	<b>2,467</b>		<b>2,371</b>	<b>10</b>	<b>2,381</b>			<b>2,153</b>	<b>28</b>	<b>2,181</b>			<b>1,557</b>	<b>14</b>	<b>1,571</b>		
<b>BUILT ENVIRONMENT</b>		<b>183</b>	<b>7</b>	<b>190</b>		<b>207</b>	<b>4</b>	<b>211</b>			<b>171</b>	<b>26</b>	<b>197</b>			<b>107</b>	<b>14</b>	<b>121</b>		
Architectural Engineering	F	58	5	63	76	F	55	55	70		F	37	37	69		F	13	13	57	
	M	20	20	24		M	23	1	24	30	M	15	2	17	31	M	10	10	43	
		<b>78</b>	<b>5</b>	<b>83</b>			<b>78</b>	<b>1</b>	<b>79</b>			<b>52</b>	<b>2</b>	<b>54</b>			<b>23</b>	<b>23</b>		
Civil Engineering	F	20	1	21	20	F	20	20	17		F	23	23	20		F	16	16	19	
	M	85	85	80		M	98	1	99	83	M	85	5	90	80	M	66	2	68	81
		<b>105</b>	<b>1</b>	<b>106</b>			<b>118</b>	<b>1</b>	<b>119</b>			<b>108</b>	<b>5</b>	<b>113</b>			<b>82</b>	<b>2</b>	<b>84</b>	
Construction Management & Surveying	F					F	1	1	2	15	F		2	2	7	F				
	M		1	1	100	M	10	1	11	85	M	11	17	28	93	M	2	12	14	100
		<b>1</b>	<b>1</b>				<b>11</b>	<b>2</b>	<b>13</b>			<b>11</b>	<b>19</b>	<b>30</b>			<b>2</b>	<b>12</b>	<b>14</b>	
<b>ENGINEERING &amp; PHYSICAL SCIENCES</b>		<b>620</b>	<b>1</b>	<b>621</b>		<b>643</b>		<b>643</b>			<b>616</b>		<b>616</b>			<b>461</b>		<b>461</b>		
Combined Studies (EPS)	F	5		5	8	F					F					F				
	M	57		57	92	M	47		47	100	M	31		31	100	M	4		4	100
		<b>62</b>		<b>62</b>			<b>47</b>		<b>47</b>			<b>31</b>		<b>31</b>			<b>4</b>		<b>4</b>	
Degree Entry Prog in Engineering	F	21		21	17	F	23		23	17	F	16		16	12	F	18		18	17
	M	104	1	105	83	M	109		109	83	M	121		121	88	M	91		91	83
		<b>125</b>	<b>1</b>	<b>126</b>			<b>132</b>		<b>132</b>			<b>137</b>		<b>137</b>			<b>109</b>		<b>109</b>	
Electrical, Electronic & Computer Eng	F	28		28	21	F	35		35	23	F	28		28	20	F	22		22	19
	M	104		104	79	M	115		115	77	M	113		113	80	M	93		93	81
		<b>132</b>		<b>132</b>			<b>150</b>		<b>150</b>			<b>141</b>		<b>141</b>			<b>115</b>		<b>115</b>	
Mechanical Engineering	F	24		24	8	F	28		28	9	F	24		24	8	F	26		26	11
	M	277		277	92	M	286		286	91	M	283		283	92	M	207		207	89
		<b>301</b>		<b>301</b>			<b>314</b>		<b>314</b>			<b>307</b>		<b>307</b>			<b>233</b>		<b>233</b>	
<b>LIFE SCIENCES</b>		<b>137</b>		<b>137</b>		<b>101</b>		<b>101</b>			<b>54</b>		<b>54</b>			<b>15</b>		<b>15</b>		
Psychology	F	122		122	89	F	86		86	85	F	43		43	80	F	9		9	60
	M	15		15	11	M	15		15	15	M	11		11	20	M	6		6	40
		<b>137</b>		<b>137</b>			<b>101</b>		<b>101</b>			<b>54</b>		<b>54</b>			<b>15</b>		<b>15</b>	
<b>MANAGEMENT &amp; LANGUAGES</b>		<b>1,099</b>	<b>31</b>	<b>1,130</b>		<b>1,133</b>	<b>1</b>	<b>1,134</b>			<b>1,083</b>		<b>1,083</b>			<b>852</b>		<b>852</b>		
Accountancy & Finance	F	203	1	204	50	F	177		177	46	F	185		185	43	F	159		159	48
	M	206	1	207	50	M	208		208	54	M	249		249	57	M	170		170	52
		<b>409</b>	<b>2</b>	<b>411</b>			<b>385</b>		<b>385</b>			<b>434</b>		<b>434</b>			<b>329</b>		<b>329</b>	
Degree Entry Prog in Management	F	60		60	51	F	71		71	51	F	53		53	46	F				
	M	58		58	49	M	68		68	49	M	61		61	54	M				
		<b>118</b>		<b>118</b>			<b>139</b>		<b>139</b>			<b>114</b>		<b>114</b>						
Management	F	243	5	248	41	F	243		243	40	F	215		215	40	F	208		208	40
	M	329	24	353	59	M	366	1	367	60	M	320		320	60	M	315		315	60
		<b>572</b>	<b>29</b>	<b>601</b>			<b>609</b>	<b>1</b>	<b>610</b>			<b>535</b>		<b>535</b>			<b>523</b>		<b>523</b>	
<b>MATHEMATICAL &amp; COMP SCIENCES</b>		<b>114</b>	<b>2</b>	<b>116</b>		<b>81</b>	<b>5</b>	<b>86</b>			<b>54</b>	<b>2</b>	<b>56</b>			<b>19</b>		<b>19</b>		
Computer Science	F	34		34	29	F	24	1	25	29	F	13		13	23	F	4		4	100
	M	80	2	82	71	M	57	4	61	71	M	41	2	43	77	M	15		15	100
<b>TEXTILES</b>		<b>258</b>	<b>15</b>	<b>273</b>		<b>206</b>		<b>206</b>			<b>175</b>		<b>175</b>			<b>103</b>		<b>103</b>		
Degree Entry Prog in Textiles & Design	F	49		49	94	F	29		29	91	F	26		26	87	F				
	M	3		3	6	M	3		3	9	M	4		4	13	M				
		<b>52</b>		<b>52</b>			<b>32</b>		<b>32</b>			<b>30</b>		<b>30</b>						
Textiles and Design	F	190	13	203	92	F	162		162	93	F	137		137	94	F	98		98	95
	M	16	2	18	8	M	12		12	7	M	8		8	6	M	5		5	5
		<b>206</b>	<b>15</b>	<b>221</b>			<b>174</b>		<b>174</b>			<b>145</b>		<b>145</b>			<b>103</b>		<b>103</b>	

The above numbers are excluded from student numbers reported on previous pages.

**POSTGRADUATE TAUGHT STUDENTS BY SCHOOL/PROGRAMME, ATTENDANCE LEVEL AND GENDER: 2011/12 - 2014/15**  
**On-campus - Dubai**

SCHOOL/Programme	2014/15				2013/14				2012/13				2011/12			
	ft	pt	Tot	%	ft	pt	Tot	%	ft	pt	Tot	%	ft	pt	Tot	%
<b>UNIVERSITY TOTAL</b>	<b>364</b>	<b>805</b>	<b>1,169</b>		<b>408</b>	<b>694</b>	<b>1,102</b>		<b>339</b>	<b>661</b>	<b>1,000</b>		<b>220</b>	<b>556</b>	<b>776</b>	
<b>BUILT ENVIRONMENT</b>	<b>121</b>	<b>383</b>	<b>504</b>		<b>114</b>	<b>312</b>	<b>426</b>		<b>90</b>	<b>286</b>	<b>376</b>		<b>50</b>	<b>253</b>	<b>303</b>	
Civil Engineering	F 6	6	12	15	F 7	6	13	17	F 2	6	8	17	F 1	3	4	31
	M 22	46	68	85	M 21	43	64	83	M 17	22	39	83	M 3	6	9	69
	<b>28</b>	<b>52</b>	<b>80</b>		<b>28</b>	<b>49</b>	<b>77</b>		<b>19</b>	<b>28</b>	<b>47</b>		<b>4</b>	<b>9</b>	<b>13</b>	
Construction Management & Surveying	F 14	26	40	10	F 11	19	30	10	F 13	23	36	12	F 7	28	35	13
	M 71	273	344	90	M 65	216	281	90	M 50	213	263	88	M 35	193	228	87
	<b>85</b>	<b>299</b>	<b>384</b>		<b>76</b>	<b>235</b>	<b>311</b>		<b>63</b>	<b>236</b>	<b>299</b>		<b>42</b>	<b>221</b>	<b>263</b>	
Urban Studies	F 1	5	6	15	F 3	7	10	26	F 1	8	9	30	F 1	7	8	30
	M 7	27	34	85	M 7	21	28	74	M 7	14	21	70	M 3	16	19	70
	<b>8</b>	<b>32</b>	<b>40</b>		<b>10</b>	<b>28</b>	<b>38</b>		<b>8</b>	<b>22</b>	<b>30</b>		<b>4</b>	<b>23</b>	<b>27</b>	
<b>ENGINEERING &amp; PHYSICAL SCIENCES</b>	<b>30</b>	<b>83</b>	<b>113</b>		<b>42</b>	<b>83</b>	<b>125</b>		<b>33</b>	<b>73</b>	<b>106</b>		<b>23</b>	<b>50</b>	<b>73</b>	
Mechanical Engineering	F 4	11	15	13	F 11	11	22	18	F 9	5	14	13	F 6	1	7	10
	M 26	72	98	87	M 31	72	103	82	M 24	68	92	87	M 17	49	66	90
	<b>30</b>	<b>83</b>	<b>113</b>		<b>42</b>	<b>83</b>	<b>125</b>		<b>33</b>	<b>73</b>	<b>106</b>		<b>23</b>	<b>50</b>	<b>73</b>	
<b>LIFE SCIENCES</b>	<b>15</b>	<b>12</b>	<b>27</b>		<b>20</b>	<b>12</b>	<b>32</b>		<b>13</b>	<b>12</b>	<b>25</b>		<b>6</b>	<b>3</b>	<b>9</b>	
Psychology	F 11	8	19	70	F 9	10	19	59	F 10	7	17	68	F 5	1	6	67
	M 4	4	8	30	M 11	2	13	41	M 3	5	8	32	M 1	2	3	33
	<b>15</b>	<b>12</b>	<b>27</b>		<b>20</b>	<b>12</b>	<b>32</b>		<b>13</b>	<b>12</b>	<b>25</b>		<b>6</b>	<b>3</b>	<b>9</b>	
<b>MANAGEMENT &amp; LANGUAGES</b>	<b>101</b>	<b>150</b>	<b>251</b>		<b>121</b>	<b>154</b>	<b>275</b>		<b>107</b>	<b>159</b>	<b>266</b>		<b>73</b>	<b>120</b>	<b>193</b>	
Accountancy & Finance	F 11	17	28	50	F 9	13	22	39	F 9	8	17	35	F 6	7	13	41
	M 11	17	28	50	M 19	15	34	61	M 13	18	31	65	M 7	12	19	59
	<b>22</b>	<b>34</b>	<b>56</b>		<b>28</b>	<b>28</b>	<b>56</b>		<b>22</b>	<b>26</b>	<b>48</b>		<b>13</b>	<b>19</b>	<b>32</b>	
Management	F 24	40	64	33	F 34	51	85	39	F 32	52	84	39	F 24	38	62	39
	M 55	76	131	67	M 59	75	134	61	M 53	81	134	61	M 36	63	99	61
	<b>79</b>	<b>116</b>	<b>195</b>		<b>93</b>	<b>126</b>	<b>219</b>		<b>85</b>	<b>133</b>	<b>218</b>		<b>60</b>	<b>101</b>	<b>161</b>	
<b>MATHEMATICAL &amp; COMP SCIENCES</b>	<b>30</b>	<b>25</b>	<b>55</b>		<b>43</b>	<b>24</b>	<b>67</b>		<b>24</b>	<b>33</b>	<b>57</b>		<b>12</b>	<b>22</b>	<b>34</b>	
Computer Science	F 9	9	18	33	F 14	5	19	28	F 4	10	14	25	F 2	7	9	26
	M 21	16	37	67	M 29	19	48	72	M 20	23	43	75	M 10	15	25	74
<b>PETROLEUM ENGINEERING</b>	<b>44</b>	<b>24</b>	<b>68</b>		<b>54</b>	<b>20</b>	<b>74</b>		<b>59</b>	<b>20</b>	<b>79</b>		<b>46</b>	<b>21</b>	<b>67</b>	
Petroleum Engineering	F 6	1	7	10	F 5	3	8	11	F 4	2	6	8	F 2	3	5	7
	M 38	23	61	90	M 49	17	66	89	M 55	18	73	92	M 44	18	62	93
<b>EBS (MBA)</b>	<b>23</b>	<b>128</b>	<b>151</b>		<b>14</b>	<b>89</b>	<b>103</b>		<b>13</b>	<b>78</b>	<b>91</b>		<b>10</b>	<b>87</b>	<b>97</b>	
Edinburgh Business School	F 8	27	35	23	F 3	16	19	18	F 5	12	17	19	F 1	15	16	16
	M 15	101	116	77	M 11	73	84	82	M 8	66	74	81	M 9	72	81	84

The above numbers are excluded from student numbers reported on previous pages.

**UNDERGRADUATE INCOMING EXCHANGE, NON-GRADUATING AND VISITING STUDENTS: 2012/13 - 2014/15**

SCHOOL/Programme	2014/15						2013/14						2012/13								
	EU/UK			OS			Full Tot	EU/UK			OS			Full Tot	EU/UK			OS			Full Tot
	ft	pt	Tot	ft	pt	Tot		ft	pt	Tot	ft	pt	Tot		ft	pt	Tot	ft	pt	Tot	
<b>UNIVERSITY TOTAL</b>	136	23	159	70		70	229	138	39	177	44		44	221	136	16	152	24	2	26	178
<b>BUILT ENVIRONMENT</b>	9		9	38		38	47	9		9	25		25	34	11		11	9		9	20
<b>ENGINEERING &amp; PHYSICAL SCIENCES</b>	20	23	43	6		6	49	26	37	63			63	30	9	39		2		2	41
<b>LIFE SCIENCES</b>														2		2		1		1	3
<b>MANAGEMENT &amp; LANGUAGES</b>	103		103	15		15	118	97		97	11		11	108	94	3	97	10		10	107
<b>MATHEMATICAL &amp; COMP SCIENCES</b>	4		4	3		3	7	4		4	4		4	8	1		1	3		3	4
<b>TEXTILES &amp; DESIGN</b>				8		8	8	2	2	4	4		4	8	2		2	1		1	3

The above numbers are excluded from student numbers reported on previous pages

The EU/UK numbers includes the following number of UK students: 2014/15 - 0, 2013/14 - 2; 2012/13 - 2.

**UNDERGRADUATE FRESHER STUDENTS: DOMICILES 2011/12 - 2014/15 (ranked by population size)**

On-campus - Scotland

Academic year of entry	Year 1	Year 2	Year 3	Year 4	Year 5	Total: All Years 2014/15	2013/14	2012/13 Total	2011/12 Total
<b>UNIVERSITY TOTAL</b>	1,410	245	142	2		1799	2,131	1,775	1,831
<b>UK</b>	1,263	171	66	1		1,501	1,717	1,347	1,311
Scotland	908	115	64	1		1,088	1,331	1,013	1,068
Rest of UK	355	56	2			413	386	334	243
<b>EU</b>	44	4	5			53	135	193	310
France	7	2	2			11	31	76	101
Spain	7		1			8	6	5	9
Germany	1	1				2	14	10	32
Sweden	4					4	6	1	15
Greece	3					3	8	17	25
Cyprus	2		1			3	7	12	8
Italy	3					3	6	8	11
Poland	3					3	5	11	8
Slovakia	3					3	1	1	4
Lithuania	2					2	10	14	27
Latvia	2					2	1	7	10
Bulgaria	1					1	9	10	8
Hungary	1					1	6	1	3
<b>Overseas non-EU</b>	103	70	71	1		245	279	233	210
China	18	18	59	1		96	64	48	66
Malaysia	7	15	5			27	36	30	19
Norway	23	3				26	38	46	32
Hong Kong	6	1	1			8	3	7	4
Oman	2	4	1			7	43	23	3
Saudi Arabia	6	1				7	5	3	9
UAE	6					6	9	5	
Nigeria		6				6	3	6	2
Thailand	4	1	1			6	3	0	2
Russia	3	2				5	2	3	2

**POSTGRADUATE TAUGHT COURSE FRESHER STUDENTS: DOMICILES 2011/12 - 2014/15**  
(ranked by population size)

Academic year of entry	Year 1	Year 2	2014/15 Total	2013/14 Total	2012/13 Total	2011/12 Total
<b>UNIVERSITY TOTAL</b>	<b>1,801</b>	<b>2</b>	<b>1,803</b>	<b>1,264</b>	<b>1,279</b>	<b>1,309</b>
<b>UK</b>	<b>265</b>		<b>265</b>	<b>326</b>	<b>288</b>	<b>306</b>
Scotland	208		208	248	178	236
Rest of UK	57		57	78	110	70
<b>EU</b>	<b>272</b>		<b>272</b>	<b>275</b>	<b>308</b>	<b>298</b>
Germany	68		68	58	68	65
Greece	55		55	74	127	99
France	44		44	53	35	37
Spain	25		25	26	21	26
Italy	15		15	16	4	6
Ireland	13		13			19
Cyprus	12		12	7	9	8
Austria	6		6	2	6	1
<b>Overseas non-EU</b>	<b>1,264</b>	<b>2</b>	<b>1,266</b>	<b>663</b>	<b>697</b>	<b>698</b>
China	302	1	303	248	312	264
UAE	276		276	5		
India	142		142	44	38	45
Malaysia	82		82	36	27	19
Nigeria	72		72	40	36	58
Thailand	41		41	37	46	60
Kazakhstan	28		28	10	23	36
Saudi Arabia	22		22	17	7	25
Pakistan	22		22	10	7	4
U.S.A.	20		20	27	16	11
Oman	17		17	6	13	6
Ghana	16		16	12		20
Iraq	12		12	9	6	3
Norway	11		11	10	18	7
Canada	9		9	11	9	
Russia	9		9	11	5	5
Turkey	9		9	3	2	4
Mexico	8		8	3	4	4
Azerbaijan	8		8	3	2	1
Colombia	7		7	10	4	5
Other Overseas non-EU	151	1	152	101	122	121

Figures for 2011 to 2015 exclude a small number of Edinburgh Business School fresher students.

**POSTGRADUATE RESEARCH FRESHER STUDENTS: DOMICILES 2011/12 - 2014/15**  
(ranked by population size)

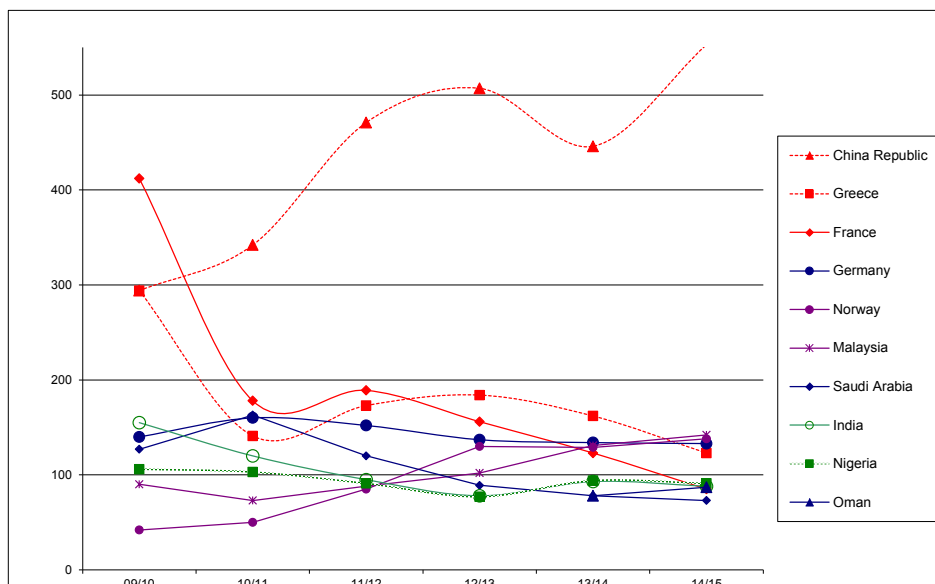
Academic year of entry	Year 1	Year 2	2014/15	2013/14	2012/13	2011/12 Total
<b>UNIVERSITY TOTAL</b>	<b>167</b>		<b>167</b>	<b>297</b>	<b>142</b>	<b>126</b>
<b>UK</b>	<b>72</b>		<b>72</b>	<b>203</b>	<b>73</b>	<b>49</b>
Scotland	55		55	47	32	35
Rest of UK	17		17	156	41	14
<b>EU</b>	<b>34</b>		<b>34</b>	<b>30</b>	<b>19</b>	<b>24</b>
Spain	6		6	5	3	
Italy	5		5	5	1	6
Greece	5		5	3	9	5
Germany	7		7	3	2	3
Lithuania				3	1	
Poland	4		4	3		4
Romania				2		
Bulgaria				2		
Cyprus				1	2	2
Netherlands	2		2	1		
Ireland				1		
Belgium				1		
Other EU	5				1	4
<b>Overseas non-EU</b>	<b>61</b>		<b>56</b>	<b>64</b>	<b>50</b>	<b>53</b>
Saudi Arabia	8		8	1	2	3
Nigeria	7		7	11	9	4
China	6		6	6	8	6
India	5		5	4	2	5
UAE	5		5	3	3	1
Iran	4		4	4	4	6
Other Overseas non-EU	26		21	30	22	28

NON-UK DOMICILED STUDENTS (UG, PGT, PGR) BY COUNTRY: 2009/10 - 2014/15  
On-campus - Scotland

CONTINENT/COUNTRY	2014/15	%	2013/14	%	2012/13	%	2011/12	%	2010/11	%	2009/10	%
<b>UNIVERSITY TOTAL</b>	<b>2,812</b>	<b>100</b>	<b>2,745</b>	<b>100</b>	<b>2,435</b>	<b>100</b>	<b>2,686</b>	<b>100</b>	<b>2,476</b>	<b>100</b>	<b>2,697</b>	<b>100</b>
China Republic	533	19	446	16	507	21	471	18	343	14	279	10
Malaysia	142	5	131	5	102	4	88	3	73	3	90	3
Norway	138	5	129	5	130	5	85	3	78	3	61	2
Germany	133	5	134	5	137	6	152	6	160	6	140	5
Greece	123	4	162	6	184	8	173	6	141	6	294	11
Nigeria	91	3	94	3	77	3	91	3	109	4	106	4
India	88	3	93	3	78	3	95	4	131	5	155	6
Oman	87	3	78	3	50	2	24	1	24	1	16	1
France*	85	3	123	4	156	6	189	7	178	7	412	15
United Arab Emirates	82	3	62	2	42	2	39	1	37	1	21	1
Spain	74	3	64	2	58	2	60	2	95	4	40	1
Saudi Arabia	73	3	78	3	89	4	120	4	166	7	127	5
Italy	62	2	60	2	45	2	45	2	33	1	32	1
Thailand	56	2	52	2	57	2	74	3	52	2	20	1
Irish Republic	51	2	68	2	66	3	96	4	112	5	153	6
Lithuania	49	2	56	2	54	2	51	2	22	1	9	
Poland	46	2	45	2	55	2	56	2	50	2	71	3
Cyprus	45	2	38	1	38	2	26	1	23	1	17	1
USA	44	2	49	2	31	1	32	1	31	1	28	1
Kazakhstan	42	1	33	1	44	2	60	2	42	2	29	1
Bulgaria	31	1	37	1	31	1	24	1	12		12	
Iran Islamic Republic	31	1	33	1	30	1	41	2	38	2	34	1
Hong Kong	26	1	19	1	25	1	18	1	15	1	15	1
Russia	24	1	26	1	21	1	19	1	14	1	17	1
Latvia	24	1	24	1	28	1	23	1	13	1	9	
Netherlands	24	1	20	1	10		15	1	10		6	
Pakistan	22	1	26	1	21	1	24	1	33	1	25	1
Finland	20	1	26	1	27	1	23	1	19	1	11	
Libyan Arab Republic	20	1	24	1	24	1	47	2	58	2	79	3
Canada	19	1	19	1	16	1	8				8	
Ghana	18	1	19	1	21	1	26	1	6		20	1
Switzerland	18	1	19	1	18	1	8				11	
Iraq	17	1	16	1	9		11		7		5	
Sweden	15	1	16	1	21	1	28	1	21	1	24	1
Egypt	15	1	15	1	12	1	8				10	
Hungary	15	1	15	1	8		6				4	
Syrian Arab Republic	13		18	1	22	1	40	1	30	1	32	1
Kuwait	13		16	1	13	1	9				7	
Singapore	13		16	1	12	1	7				3	
Qatar	13		11		9		7				2	
Portugal	12		13		6		8				13	
Belgium	12		10		16	1	13		12		14	1
Mexico	10		12		12	1	17	1	16	1	14	1
Romania	10		10		8		9				6	
<b>OTHER EUROPE</b>	<b>115</b>											
<b>OTHER AFRICA</b>	<b>88</b>											
<b>OTHER ASIA</b>	<b>72</b>											
<b>OTHER AMERICAS</b>	<b>58</b>											
<b>OTHER AUSTRALIA</b>												

Percentages are expressed as a proportion of the non-UK total.  
Top 10 domiciles by population size are highlighted in each year prior to 2014/15.  
UK dependent countries are not included.  
\*Including any French dependencies.  
Grouped 'other' data by continent is reported for 2012/13 and earlier years in the relevant annual publications for each year.  
Inclusions/exclusions detailed on page 5 apply. Note that total non-UK numbers in this report will not match exactly those indicated on page 5 which assigns students to 'other EU' and 'overseas' categories on the basis of the 'fees status' assigned to the student.

Top 10 domiciles by population size (on-campus students studying in Scotland): trends 2009/10 - 2014/15





APPROVED LEARNING PARTNERS DEGREE PROGRAMME STUDENTS 2013/14

	ALP	SLS	SBE	EPS	MACS	SML	TEX	IPE	EBS	Total
<b>UNIVERSITY TOTAL</b>		<b>79</b>	<b>1,128</b>	<b>246</b>	<b>1,048</b>	<b>2,397</b>	<b>35</b>	<b>214</b>	<b>4,602</b>	<b>9,749</b>
Australia	University of Queensland*							38		38
Azerbaijan	Baku Higher Oil School			112						112
	TTE Petrofac Ltd			24				44		68
<b>Azerbaijan Total</b>										<b>180</b>
Bahrain	Bahrain Training Institute		37							37
Bangladesh	Bangladesh Institute of Management Studies					322				322
China	University of Petroleum, East China							37		37
Costa Rica	University para la Cooperacion Internacional								3	3
Denmark	Fokus Limited								7	7
Egypt	The American University in Cairo								556	556
Greece	Centre Euro Management Studies (CEMS)		1							1
	iCon Training International		50						98	148
	Technical Educational Institute of Piraeus			110						110
<b>Greece Total</b>										<b>259</b>
Hong Kong	Hong Kong - Continuous Professional Education		176							176
	Hong Kong College of Engineering		66							66
	The Hong Kong Polytechnic University					180				180
	School of Professional and Continuous Education								9	9
	Hong Kong Cyber University								43	43
<b>Hong Kong Total</b>										<b>474</b>
Iran	ICTEC (Tehran)								3	3
Ireland	HSI Limerick Business School								47	47
Israel	Ramat-Gan College				1				7	7
Jamaica	B&B University College Ltd	21	84			65			98	268
Jordan	Al-Ahliyya Amman University								18	18
Malaysia	Imperia Institute of Technology		101							101
	Universiti Teknologi Petronas*							3		3
<b>Malaysia Total</b>										<b>104</b>
Maldives	Clique College					56				56
Mauritius	Glamis Business School					32			167	199
Norway	Oslo School of Management								188	188
Portugal	IsPG Instituto do Petroleo e Gas (GALP)							21		21
Russia	Tomsk Polytechnic University							71		71
Serbia	English School of Business	8							17	25
Singapore	Trent Global College of Technology and Management		506							506
	Uptrend Education Pte Ltd	14				72				86
	East Asia School Business Institute Management								150	150
<b>Singapore Total</b>										<b>742</b>
South Africa Total	CTI				1,047	945				1,992
Sri Lanka	Oxford College of Business	30				41				71
Sweden	Executive Management Institute								64	64
Switzerland	FHNW University Applied Sciences NWSwitzerland								129	129
Trinidad & Tobago	School of Higher Education Ltd (San Fernando)	6	89			145				240
	School of Higher Education Ltd (San Juan)					105				105
	School of Business & Computer Science (T&T)								1,412	1,412
<b>Trinidad &amp; Tobago Total</b>										<b>1,757</b>
Uganda	Management and Accounting Training Company								378	378
Ukraine	Institute of Political Science								226	226
United Arab Emirates	Dubai (ALP)					33				33
UK	Fife College		18							18
	West London College					401	35		506	942
	City College								22	22
<b>UK Total</b>										<b>982</b>
USA	Network of Excellence in Training								198	198
Zambia	Zambian Institute (ZICAB)								256	256

\*Note: asterisked partners are collaborative partners rather than ALPs but students are located with the partner for the duration of their studies.







HIGHER DEGREES AND OTHER AWARDS: 2012 - 2014 - Scottish Campus

SCHOOL/Programme	2014				2013				2012				Total						
	PhD & EngD	MPhil	Taught Master	PgDip	PgCert	Total	PhD & EngD	MPhil	Taught Master	PgDip	PgCert	Total		PhD & EngD	MPhil	Taught Master	PgDip	PgCert	Total
<b>UNIVERSITY TOTAL</b>	88	2	1,103	90	85	1,368	93	3	1,050	94	91	1,331	116	4	1,092	102	98	3	1,415
<b>BUILT ENVIRONMENT</b>	13		167	13	5	198	12		152	19	9	192	15		180	12	21		228
Architectural Engineering			16	1	1	18			20	1	1	21			20	2	1		23
Civil Engineering	5		47	5	3	60	3		27	4	3	37	6		42	3	1		52
Construction Management & Surveying	6		50	2		58	6		50	5	1	62	6		54	3	9		72
Urban Studies	2		54	5	1	62	3		55	10	4	72	3		63	4	10		80
Built Environment (General)															1				1
<b>ENGINEERING &amp; PHYSICAL SCIENCES</b>	41	1	153	2	2	199	37	2	150	3	1	193	37	1	158		4		200
Chemical Engineering	4		11			15	3		8			11	3		10				14
Chemistry	7		13			20	4	1	9	1		15	9		5		3		17
Electrical, Electronic & Computer Engineering	5	1	57		1	64	5		38	1		44	7		60		1		68
Mechanical Engineering	5		61	2	1	69	11	1	87		1	100	8		68				76
Physics	20		11		31	31	14		8	1		23	10		15				25
<b>LIFE SCIENCES</b>	8		102	8		118	9		107	10	4	130	6		55	1	3		65
Biology	6		81	2		89	7		77	5	2	91	5		51	1	3		60
Life Sciences General	1				1	1	1					1							1
Psychology	1		21	6		28	1		30	5	2	38			4				4
Sport & Exercise Science																			
<b>MANAGEMENT &amp; LANGUAGES</b>	4		387	40	12	443	7		318	42	8	375	8		334	8	49	1	400
Accountancy and Finance	2		102	14	2	120	2		84	6	1	93			60		10		70
Economics							4		34	6		40	1		4				1
Languages			61	6		67						40	4		48	1	11		65
Management	2		224	20	10	256	1		200	30	7	238	3		226	7	28		264
<b>MATHEMATICAL &amp; COMPUTER SCIENCES</b>	13		115	9	6	143	10		131	11	5	157	22		169	10	16	2	219
Actuarial Mathematics & Statistics	2		52	6	4	64	1		75	8	1	85	6		81	3	7		97
Computer Science	6		41	2	1	50	6		38	3	3	50	10		67	6	7	1	91
Mathematics	5		22	1	1	29	3		18	3	22	22	6		21	1	2		31
<b>PETROLEUM ENGINEERING</b>	8	1	154	15	58	236	11		174	8	43	236	25	1	170	49	5		250
<b>TEXTILES &amp; DESIGN</b>	1		25	3		29	7		18	1	1	20	3		26	1			32
Academic Practice					2	2					20	20				21			21

Notes: Small numbers of campus based and consortium MBA graduates are included in the external programmes Edinburgh Business School total below.

HIGHER DEGREES AND OTHER AWARDS - INTERNATIONAL PROGRAMMES\*: 2012 - 2014 (\*Independent distance learners/ supported learners through ALP network)

SCHOOL/Programme	2014				2013				2012				Total		
	PhD & DBA	Taught Master	PgDip	PgCert	Total	PhD & DBA	Taught Master	PgDip	PgCert	Total	PhD & DBA	Taught Master		PgDip	PgCert
<b>UNIVERSITY TOTAL</b>	13	1,029	71	138	1,251	16	1,398	51	55	1,520	9	1,442	36	67	1,554
<b>BUILT ENVIRONMENT</b>		159	39	56	254		146	34	45	225	3	190	24	58	275
Architectural Eng		7	2	2	11		9	1	2	12		12	1	3	16
Civil Engineering		42	7	19	68		41	5	11	57	1	43	2	7	53
Construction Management & Surveying		98	21	33	152		81	24	32	137	2	126	21	47	196
Urban Studies		12	8	2	22		15	3	18	18		8		1	19
Built Environment (General)			1		1			1		1		2		2	2
<b>ENGINEERING &amp; PHYSICAL SCIENCES</b>		62		21	83	2	78	7		87	3	63	3	2	71
Chemical Engineering				20	20							1			2
Electrical, Electronic & Computer Eng												2			2
Mechanical Engineering		62		1	63	2	78	7		87	2	62	3	2	69
<b>LIFE SCIENCES</b>		12	6	9	27	1	10	2	7	20		9	9		18
Biology		7		8	15	1	9	2	4	16		9	9		18
Psychology		5	6	1	12		1		3	4					4
<b>MATHEMATICAL &amp; COMPUTER SCIENCES</b>		2		1	3	1	1			2	1	3			4
Computer Science		2		1	3	1	1			2	1	3			4
<b>PETROLEUM ENGINEERING</b>		88	26	50	164	3	95	8		106		77		2	79
<b>EDINBURGH BUSINESS SCHOOL (Masters/Doctorates)</b>	13	706			719	9	1,068			1,077	2	1,100			1,102
Academic Practice				1	1				3	3				5	5

**FIRST DEGREES AND OTHER AWARDS: 2012 - 2014 - Dubai Campus**

SCHOOL/Programme	2014										2013										2012																											
	Honours		1st		% 1,2/		2.2		3rd		Ord from Hons		Ord Yr3		Other Cert/HE		Dip/HE		Total		Honours		1st		% 1,2/		2.2		3rd		Ord from Hons		Ord Yr3		Other Cert/HE		Dip/HE		Total									
	2014	2013	2012	2011	2010	2009	2008	2007	2006	2005	2004	2003	2002	2001	2000	1999	1998	1997	1996	1995	2014	2013	2012	2011	2010	2009	2008	2007	2006	2005	2004	2003	2002	2001	2000	1999	1998	1997	1996	1995								
<b>UNIVERSITY TOTAL</b>	15	31	44	42	10	6	397	50	13	564	15	25	53	21	7	8	332	41	15	464	14	14	56	8	11	3	233	23	3	309																		
<b>BUILT ENVIRONMENT</b>	2	2	29	8	2	2	10	2	2	26	2	5	78	2	2	2	29	8	2	48	2	2	5	8	2	20	1	1	21																			
Architectural Engineering																																																
Civil Engineering																																																
Construction Management & Surveying																																																
<b>ENGINEERING &amp; PHYSICAL SCIENCES</b>	13	21	51	24	7	2	75	10	2	154	10	10	50	9	3	8	45	5	5	95	13	8	58	5	9	1	40	3	3	82																		
Electrical Electronic & Comp Eng	5	7	48	9	4	28	3	1	57	4	5	53	3	2	3	20	5	37	7	37	7	3	67	2	3	20	1	2	38																			
Mechanical Engineering	8	14	52	15	3	2	41	4	1	88	6	5	50	6	1	4	24	5	5	56	6	5	52	3	6	1	20	2	1	44																		
Combined Studies (BSc/BEng)																																																
<b>LIFE SCIENCES</b>																																																
Psychology																																																
<b>MANAGEMENT &amp; LANGUAGES</b>	8	42	9	1	1	283	22	5	329	3	9	57	6	3	229	24	8	282	1	6	50	3	2	2	172	17	3	91																				
Accountancy & Finance	6	75	2			119	8	1	136	3	5	67	4	91	10	1	114	2	2	100	2	4	42	3	2	2	86	3	1	91																		
Management	2	18	7	1	1	164	14	4	193																																							
<b>MATHEMATICAL &amp; COMPUTER SCIENCES</b>																																																
Computer Sciences																																																
<b>TEXTILES &amp; DESIGN</b>																																																

**HIGHER DEGREES AND OTHER AWARDS: 2011 - 2014 - Dubai Campus**

SCHOOL/Programme	2014				2013				2012				2011			
	Taught		Master		Taught		Master		Taught		Master		Taught		Master	
	2014	2013	2012	2011	2014	2013	2012	2011	2014	2013	2012	2011	2014	2013	2012	2011
<b>UNIVERSITY TOTAL</b>	388	96	43	525	110	58	283	345	60	36	342	200	42	25	267	
<b>BUILT ENVIRONMENT</b>	132	21	19	172	110	17	16	143	18	24	161	108	16	14	138	
Civil Engineering	19	1	4	24	4		1	5								
Construction Management & Surveying	101	19	14	134	99	14	13	126	12	22	146	104	15	13	132	
Urban Studies	12	1	1	14	7	3	2	12	7	6	2	15	4	1	6	
<b>ENGINEERING &amp; PHYSICAL SCIENCES</b>	48	2	1	51	29	1	30	22	22	8	22	8	1	1	8	
Mechanical Engineering	48	2	1	51	29	1	30	22	22	8	22	8	1	1	8	
Physics																
<b>LIFE SCIENCES</b>	7	8	5	20	6	1	1	8	1	1	2					
Psychology	7	8	5	20	6	1	1	8	1	1	2					
<b>MANAGEMENT &amp; LANGUAGES</b>	109	49	14	172	56	25	9	90	67	37	7	111	40	21	5	
Accountancy and Finance	19	3	3	25	14	5	2	21	10	2	1	13				
Languages	50	46	11	147	42	20	7	69	57	35	6	98	40	21	5	
Management	35	6	3	44	11	4	2	17	19	1	4	24	16	2	1	
<b>MATHEMATICAL &amp; COMPUTER SCIENCES</b>	35	6	3	44	11	4	2	17	19	1	4	24	16	2	1	
Computer Science	35	6	3	44	11	4	2	17	19	1	4	24	16	2	1	
<b>PETROLEUM ENGINEERING</b>	55	10	1	66	47	10	57	17	4	1	22	28	3	5	36	

UNDERGRADUATE STUDENT PROGRESSION: 2011/12 to 2014/15

ALL YEARS: On-Campus - Scotland

SCHOOL : Programme	2013/14 to 2014/15			2012/13 to 2013/14			2011/12 to 2012/13			Total
	Awarded degree/awarded for other qualification	Continuing as registered students in	Withdrawn from the University	Awarded degree/awarded for other qualification	Continuing as registered students in	Withdrawn from the University	Awarded degree/awarded for other qualification	Continuing as registered students in	Withdrawn from the University	
	% of total	% of total	% of total	% of total	% of total	% of total	% of total	% of total	% of total	% of total
<b>UNIVERSITY TOTAL</b>	1,436	4,744	186	1,573	4,199	141	1,468	4,078	193	5,739
<b>BUILT ENVIRONMENT</b>	207	509	28	200	538	20	212	527	26	765
Architectural Engineering	18	79	6	34	70	6	25	68	7	100
Civil Engineering	102	26	17	77	21	10	82	24	8	346
Construction Management & Surveying	55	84	2	63	102	1	78	118	9	205
Urban Studies	32	37	3	26	24	2	27	24	2	114
<b>ENGINEERING &amp; PHYSICAL SCIENCES</b>	341	1,233	60	330	1,150	49	331	1,020	34	1,385
Chemical Engineering	59	284	20	58	258	11	52	18	10	287
Chemistry	60	23	6	55	23	8	59	26	5	223
Combined Studies (BSc/BEng)	38	57	5	33	78	6	30	27	2	113
Electrical, Electronic & Computer Engineering	39	18	11	34	152	6	47	28	3	169
Mechanical Engineering	94	360	5	114	340	5	97	23	9	422
Physics	51	164	13	36	19	7	46	27	5	171
<b>LIFE SCIENCES</b>	167	662	19	185	484	8	181	25	12	712
Biology	88	336	12	85	256	5	85	24	9	356
Psychology	64	16	7	66	212	3	36	15	3	245
Sport & Exercise Science	15	94	1	34	68	16	60	54	1	111
<b>MANAGEMENT &amp; LANGUAGES</b>	329	1,295	41	438	1,060	40	375	1,054	58	1,487
Accountancy & Finance	80	317	11	115	234	13	102	27	11	376
Combined Studies (BA)	14	47	1	32	78	1	17	55	14	31
Economics	42	16	7	60	23	6	38	18	4	209
Languages	72	18	11	72	21	8	67	20	5	335
Management	114	21	10	146	317	9	135	30	17	453
Management (SBC)	7	35	1	13	22	3	16	19	9	83
<b>MATHEMATICAL &amp; COMPUTER SCIENCES</b>	235	643	21	232	578	13	234	28	30	832
Actuarial Mathematics & Statistics	90	230	4	73	24	3	81	28	7	294
Computer Science	63	25	10	64	160	1	70	27	15	258
Mathematics	82	26	7	95	32	9	83	30	8	280
<b>TEXTILES &amp; DESIGN</b>	157	402	17	188	389	11	135	24	33	558
Combined Studies	5	83	1	2	40	3	2	67	1	3
Textiles & Design	152	27	3	186	32	11	133	24	33	555

Includes full and part-time students. Includes home students on a year abroad as part of their studies. Excludes registered incoming exchange and non-graduating students. Withdrawal figures include those who have left the University for either academic or personal reasons. "Other qualifications" include the Diploma and the Certificate of Higher Education.

**UNDERGRADUATE STUDENT PROGRESSION: 2011/12 - 2014/15**

**FRESHERS ONLY: On-Campus - Scotland**

SCHOOL : Programme	2013/14 to 2014/15				2012/13 to 2013/14				2011/12 to 2012/13				Total
	Awarded degree/ for other qualification	Continuing as registered students in	Withdrawn from the University	Total	Awarded degree/ for other qualification	Continuing as registered students in	Withdrawn from the University	Total	Awarded degree/ for other qualification	Continuing as registered students in	Withdrawn from the University	Total	
	% of total	% of total	% of total		% of total	% of total	% of total		% of total	% of total	% of total		
<b>UNIVERSITY TOTAL</b>	<b>63</b>	<b>1,917</b>	<b>151</b>	<b>2,131</b>	<b>98</b>	<b>1,572</b>	<b>108</b>	<b>1,778</b>	<b>135</b>	<b>1,555</b>	<b>150</b>	<b>1,840</b>	
<b>BUILT ENVIRONMENT</b>	<b>6</b>	<b>170</b>	<b>22</b>	<b>198</b>	<b>7</b>	<b>194</b>	<b>16</b>	<b>217</b>	<b>9</b>	<b>199</b>	<b>20</b>	<b>228</b>	
Architectural Engineering	1	29	3	33	3	89	5	37	1	26	5	32	
Civil Engineering	3	88	15	106	3	112	9	124	4	90	8	102	
Construction Management & Surveying	1	34	1	36	1	33	1	35	4	49	6	59	
Urban Studies	1	19	3	23	2	20	1	21	4	34	1	35	
<b>ENGINEERING &amp; PHYSICAL SCIENCES</b>	<b>21</b>	<b>420</b>	<b>49</b>	<b>490</b>	<b>31</b>	<b>415</b>	<b>41</b>	<b>487</b>	<b>61</b>	<b>369</b>	<b>24</b>	<b>454</b>	
Chemical Engineering	7	95	13	108	2	88	8	98	2	90	8	100	
Chemistry	8	79	4	90	13	14	7	95	18	58	4	80	
Combined Studies (BSc/BEng)	7	18	5	30	4	17	2	23	6	17	74	23	
Electrical, Electronic & Computer Engineering	57	84	11	68	4	59	6	69	13	20	3	65	
Mechanical Engineering	2	99	4	105	2	117	5	124	8	105	6	119	
Physics	5	72	12	89	6	59	13	78	14	21	3	67	
<b>LIFE SCIENCES</b>	<b>7</b>	<b>338</b>	<b>16</b>	<b>361</b>	<b>5</b>	<b>141</b>	<b>6</b>	<b>152</b>	<b>13</b>	<b>223</b>	<b>9</b>	<b>245</b>	
Biology	4	162	9	175	3	71	3	77	13	125	7	145	
Psychology	3	176	7	186	2	70	3	75	9	98	2	100	
<b>MANAGEMENT &amp; LANGUAGES</b>	<b>18</b>	<b>531</b>	<b>31</b>	<b>580</b>	<b>26</b>	<b>420</b>	<b>26</b>	<b>472</b>	<b>33</b>	<b>426</b>	<b>50</b>	<b>509</b>	
Accountancy & Finance	5	127	9	141	3	83	11	97	5	103	8	116	
Combined Studies (BA)	1	1	1	1	1	100	1	1	5	4	7	15	
Economics	1	78	4	83	2	81	5	88	2	69	4	75	
Languages	1	126	7	134	2	96	4	100	3	103	15	121	
Management	11	183	10	204	15	147	4	166	16	130	14	160	
Management (Scottish Borders Campus)	1	16	1	17	5	25	2	20	7	19	9	37	
<b>MATHEMATICAL &amp; COMPUTER SCIENCES</b>	<b>4</b>	<b>294</b>	<b>18</b>	<b>316</b>	<b>10</b>	<b>233</b>	<b>9</b>	<b>252</b>	<b>13</b>	<b>174</b>	<b>22</b>	<b>209</b>	
Actuarial Mathematics & Statistics	1	121	4	125	2	104	2	108	3	77	6	86	
Computer Science	2	83	7	92	5	44	1	50	5	45	11	61	
Mathematics	2	90	7	99	3	85	6	94	5	8	5	62	
<b>TEXTILES &amp; DESIGN</b>	<b>7</b>	<b>164</b>	<b>15</b>	<b>186</b>	<b>19</b>	<b>169</b>	<b>10</b>	<b>198</b>	<b>6</b>	<b>164</b>	<b>25</b>	<b>195</b>	
Textiles & Design	7	164	15	186	19	169	10	198	6	164	25	195	

Includes full- and part-time students. Includes home students on a year abroad as part of their studies. Excludes registered incoming exchange and non-graduating students. Withdrawal figures include those who have left the University for either academic or personal reasons. "Other qualifications" include the Diploma and the Certificate of Higher Education.

UNDERGRADUATE STUDENT PROGRESSION (Split UK and EU/ other overseas): 2013/14 to 2014/15

ALL YEARS: On-Campus - Scotland

SCHOOL: Programme	Awarded degree/ awarded or deemed eligible for other qualification			Continuing as registered students in 2014/15			Withdrawn from the University			Total		
	UK % of total	EU & Overseas % of total	Total	UK % of total	EU & Overseas % of total	Total	UK % of total	EU & Overseas % of total	Total	UK % of total	EU & Overseas % of total	Total
<b>UNIVERSITY TOTAL</b>	<b>1,087</b>	<b>349</b>	<b>1,436</b>	<b>3,758</b>	<b>986</b>	<b>4,744</b>	<b>156</b>	<b>30</b>	<b>186</b>	<b>5,001</b>	<b>1,365</b>	<b>6,366</b>
<b>BUILT ENVIRONMENT</b>	166	41	207	414	95	509	25	3	28	605	139	744
Architectural Engineering	9	9	18	52	27	79	4	2	6	65	38	103
Civil Engineering	80	22	102	227	51	278	16	1	17	323	74	397
Construction Management & Surveying	50	5	55	74	10	84	2	2	4	126	15	141
Urban Studies	27	5	32	61	7	68	3	3	6	91	12	103
<b>ENGINEERING &amp; PHYSICAL SCIENCES</b>	<b>262</b>	<b>79</b>	<b>341</b>	<b>1,009</b>	<b>224</b>	<b>1,233</b>	<b>45</b>	<b>15</b>	<b>60</b>	<b>1,316</b>	<b>318</b>	<b>1,634</b>
Chemical Engineering	44	15	59	230	81	311	10	4	14	284	79	363
Chemistry	45	15	60	172	26	198	6	3	9	223	41	264
Combined Studies (BSofEng)	26	12	38	44	13	57	4	1	5	74	26	100
Electrical, Electronic & Computer Engineering	29	10	39	126	44	170	8	3	11	163	74	237
Mechanical Engineering	79	15	94	289	71	360	4	1	5	372	87	459
Physics	39	12	51	148	16	164	13	7	20	200	28	228
<b>LIFE SCIENCES</b>	<b>134</b>	<b>33</b>	<b>167</b>	<b>564</b>	<b>98</b>	<b>662</b>	<b>19</b>	<b>3</b>	<b>22</b>	<b>717</b>	<b>131</b>	<b>848</b>
Biology	68	20	88	281	55	336	12	3	15	361	83	444
Psychology	51	13	64	282	43	325	7	2	9	340	56	396
Sport & Exercise Science	15	94	109	1	6	7	1	1	2	16	100	116
<b>MANAGEMENT &amp; LANGUAGES</b>	<b>217</b>	<b>112</b>	<b>329</b>	<b>974</b>	<b>321</b>	<b>1,295</b>	<b>32</b>	<b>9</b>	<b>41</b>	<b>1,223</b>	<b>442</b>	<b>1,665</b>
Accountancy & Finance	52	28	80	218	99	317	10	4	14	280	69	408
Combined Studies (BA)	7	7	14	10	5	15	1	1	2	17	13	30
Economics	28	14	42	148	63	211	3	2	5	179	69	260
Languages	63	9	72	250	57	307	10	3	13	323	83	406
Management	60	16	76	316	94	410	8	2	10	384	72	456
Management (SBC)	7	18	25	32	3	35	1	3	4	40	3	44
<b>MATHEMATICAL &amp; COMPUTER SCIENCES</b>	<b>176</b>	<b>59</b>	<b>235</b>	<b>459</b>	<b>184</b>	<b>643</b>	<b>18</b>	<b>3</b>	<b>21</b>	<b>653</b>	<b>246</b>	<b>899</b>
Actuarial Mathematics & Statistics	52	38	90	122	108	230	2	1	3	176	54	324
Computer Science	51	12	63	145	36	181	9	4	13	205	81	286
Mathematics	73	9	82	192	40	232	7	3	10	272	85	357
<b>TEXTILES &amp; DESIGN</b>	<b>132</b>	<b>25</b>	<b>157</b>	<b>338</b>	<b>64</b>	<b>402</b>	<b>17</b>	<b>3</b>	<b>20</b>	<b>487</b>	<b>89</b>	<b>576</b>
Combined Studies	4	100	104	1	1	2	1	1	2	4	2	6
Textiles & Design	128	27	155	338	63	401	17	4	21	483	87	570

Includes full- and part-time students. Includes home students on a year abroad as part of their studies. Excludes registered incoming exchange and non-graduating students.

Withdrawal figures include those who have left the University for either academic or personal reasons.

Other qualifications include the Diploma and the Certificate of Higher Education.

**UNDERGRADUATE STUDENT PROGRESSION: 2011/12 to 2014/15**  
**ALL YEARS: On-Campus - Dubai**

SCHOOL: Programme	2013/14 to 2014/15			2012/13 to 2013/14			2011/12 to 2012/13			Total
	Awarded degree/ or eligible for other qualification % of total	Continuing as registered students in 2013/14 % of total	Withdrawn from the University % of total	Awarded degree/ or eligible for other qualification % of total	Continuing as registered students in 2012/13 % of total	Withdrawn from the University % of total	Awarded degree/ or eligible for other qualification % of total	Continuing as registered students in 2011/12 % of total	Withdrawn from the University % of total	
<b>UNIVERSITY TOTAL</b>	625 29	1,439 66	101 5	2,165 5	1,321 67	146 7	1,985 7	1,115 71	125 8	1,581 8
<b>BUILT ENVIRONMENT</b>	46 22	165 73	12 6	213 6	141 67	19 9	210 9	110 80	17 12	138 9
Architectural Engineering	5 6	72 88	5 5	82 5	53 95	15 12	56 12	21 91	2 9	23 9
Civil Engineering	34 29	82 69	3 3	119 3	84 69	15 12	122 12	74 80	11 11	92 12
Construction Management & Surveying	7 58	1 8	4 4	12 12	24 75	4 13	32 4	17 15	65 4	23 17
<b>ENGINEERING &amp; PHYSICAL SCIENCES</b>	152 29	354 68	16 3	522 3	347 71	24 5	487 5	293 76	13 3	387 3
Combined Studies (BSc/BEng)	13 28	31 67	2 4	46 2	15 56	5 19	27 5	5 71	1 14	7 7
Electrical, Electronic & Computer Engineering	59 38	92 60	3 2	154 3	99 69	6 4	143 4	88 66	7 5	133 5
Mechanical Engineering	80 25	231 72	11 3	322 7	233 74	13 4	317 4	200 81	5 2	247 2
<b>LIFE SCIENCES</b>	9 9	91 87	5 5	105 5	52 93	3 5	56 5	17 65	8 31	26 8
Psychology	9 9	91 87	5 5	105 5	52 93	3 5	56 5	17 65	8 31	26 8
<b>MANAGEMENT &amp; LANGUAGES</b>	368 35	629 60	52 5	1,049 5	624 62	71 7	1,007 7	595 66	67 7	903 7
Accountancy & Finance	141 35	254 63	6 1	401 1	303 67	17 4	451 4	274 71	13 3	387 3
Management	227 35	375 58	46 7	648 7	321 58	54 10	556 10	321 62	54 10	516 10
<b>MATHEMATICAL &amp; COMPUTER SCIENCES</b>	10 11	74 81	7 8	91 7	46 81	9 16	57 16	16 73	6 27	22 22
Computer Science	10 11	74 81	7 8	91 7	46 81	9 16	57 16	16 73	6 27	22 22
<b>TEXTILES &amp; DESIGN</b>	40 22	136 74	9 5	185 5	111 66	20 12	168 12	84 80	14 13	105 13
Textiles & Design	40 22	136 74	9 5	185 5	111 66	20 12	168 12	84 80	14 13	105 13

Includes full- and part-time students. Excludes registered incoming exchange and non-graduating students. Withdrawal figures include those who have left the University for either academic or personal reasons.

**UNDERGRADUATE STUDENT PROGRESSION: 2011/12 to 2014/15**  
**FRESHERS ONLY: On-Campus - Dubai**

SCHOOL: Programme	2013/14 to 2014/15			2012/13 to 2013/14			2011/12 to 2012/13			Total
	Awarded degree/ or eligible for other qualification % of total	Continuing as registered students in 2012/13 % of total	Withdrawn from the University % of total	Awarded degree/ or eligible for other qualification % of total	Continuing as registered students in 2012/13 % of total	Withdrawn from the University % of total	Awarded degree/ or eligible for other qualification % of total	Continuing as registered students in 2011/12 % of total	Withdrawn from the University % of total	
<b>UNIVERSITY TOTAL</b>	100 72	701 87	68 8	869 8	671 79	90 11	845 11	637 80	91 11	798 11
<b>BUILT ENVIRONMENT</b>	13 16	62 75	8 10	83 8	70 76	12 13	92 13	72 80	14 16	90 13
Architectural Engineering	1 3	25 81	5 5	31 5	33 97	11 23	34 11	21 91	2 9	23 9
Civil Engineering	6 14	36 84	1 2	43 1	35 74	1 1	47 4	36 75	8 17	48 8
Construction Management & Surveying	6 67	1 11	2 22	9 2	2 18	1 9	11 1	15 79	4 21	19 4
<b>ENGINEERING &amp; PHYSICAL SCIENCES</b>	17 9	148 83	14 8	179 8	166 84	18 9	198 9	154 87	8 5	177 8
Electrical, Electronic & Computer Engineering	13 23	41 72	3 5	57 12	46 74	6 10	62 11	50 76	5 8	66 6
Mechanical Engineering	4 3	107 88	11 9	122 4	120 88	12 9	136 4	104 94	3 3	111 3
<b>LIFE SCIENCES</b>	1 2	52 93	3 5	56 3	39 98	1 3	40 1	17 65	8 31	26 8
Psychology	1 2	52 93	3 5	56 3	39 98	1 3	40 1	17 65	8 31	26 8
<b>MANAGEMENT &amp; LANGUAGES</b>	65 15	333 77	34 8	432 8	300 75	43 11	400 11	328 78	45 11	423 11
Accountancy & Finance	9 7	119 90	4 3	132 4	133 90	8 5	148 5	147 90	9 5	164 5
Management	56 19	214 71	30 10	300 10	167 66	35 14	252 14	181 70	36 14	259 14
<b>MATHEMATICAL &amp; COMPUTER SCIENCES</b>	1 2	39 87	5 11	45 5	33 79	8 19	42 5	15 71	6 29	21 6
Computer Science	1 2	39 87	5 11	45 5	33 79	8 19	42 5	15 71	6 29	21 6
<b>TEXTILES &amp; DESIGN</b>	3 4	67 91	4 5	74 4	63 86	8 11	73 11	51 84	10 16	61 16
Textiles & Design	3 4	67 91	4 5	74 4	63 86	8 11	73 11	51 84	10 16	61 16

## GRADUATE FIRST DESTINATIONS (FIRST DEGREES): 2010/11 - 2013/14

SCHOOL/DIVISION	2013/14 (January 2015 census)										2012/13 (January 2014 census)															
	No of Known Dest (KD)	No in Emp	% of KD	No in Further Study	% of KD	% in Emp/Study (note 1)	Not Available/ Not Seeking	% of KD	Seeking	% of KD	Total Emp	Graduate Level Job (note 2)	% in Graduate Level Job	No of Known Dest (KD)	No in Emp	% of KD	No in Further Study	% of KD	% in Emp/Study (note 1)	Not Available/ Not Seeking	% of KD	Seeking	% of KD	Total Emp	Graduate Level Job (note 2)	% in Graduate Level Job
<b>UNIVERSITY TOTAL</b>	739	580	78	81	11	95	43	6	35	5	560	452	78	830	637	77	119	14	94	22	3	52	6	625	473	76
<b>BUILT ENVIRONMENT</b>	115	101	88	6	5	97	5	4	3	3	101	88	87	114	99	87	11	10	98	2	2	2	2	99	86	87
Architectural Engineering	5	5	100			100					5	4	80	13	10	77	2	15	92		1	8		10	9	90
Construction Management & Surveying	39	37	95	1	3	100	1	3			37	35	95	46	41	89	2	4	98	2	4	1	2	41	35	85
Civil Engineering	57	47	82	4	7	96	4		2		47	39	83	38	35	92	3	8	100				35	32	91	
Urban Studies	14	12	86	1	7	93			1		12	10	83	17	13	76	4	24	100				13	10	77	
<b>LIFE SCIENCES</b>	92	58	63	22	24	93	6	7	6	7	58	39	67	107	72	67	24	22	93	4	4	7	7	72	40	56
Biological Sciences	48	29	60	12	25	89	2	4	5	10	29	25	86	43	26	61	12	28	90	1	2	4	9	26	16	62
Psychology	32	19	59	10	31	97	2	6	1	3	19	10	53	37	24	65	11	30	95			2	5	24	12	50
Sport & Exercise Science	12	10	83			100	2	17			10	4	40	27	22	81	1	4	96	3	11	1	4	22	12	55
<b>ENGINEERING &amp; PHYSICAL SCIENCES</b>	170	124	73	26	15	93	9	5	11	6	124	94	76	168	114	68	40	24	92	1	1	13	8	114	93	82
Chemical Engineering	37	30	81			88	3	8	4	11	30	28	93	40	31	78	8	20	98			1	2	31	27	87
Chemistry	31	18	58	10	32	97	2	6	1	3	18	11	61	26	13	50	11	42	92			2	8	13	7	54
Mechanical Engineering	49	41	84	5	10	94			3	6	41	36	88	67	52	78	11	16	94			4	6	52	47	90
Physics	25	12	48	8	32	87	2	8	3	12	12	6	50	15	5	33	9	60	93			1	7	5	2	40
Electrical, Electronic & Computer Engineering	18	17	94	1	6	100					17	11	65	12	9	75	1	8	91	1	8	1	8	9	8	89
Combined Studies	10	6	60	2	20	100	2	20			6	2	33	8	4	50			50			4	50	4	2	50
<b>MANAGEMENT &amp; LANGUAGES</b>	144	117	81	12	8	94	7	5	8	6	117	91	78	169	133	79	16	9	93	9	5	11	7	133	91	68
Accountancy & Finance	34	29	85	3	9	97	1	3	1	3	29	24	83	47	43	91	2	4	100	2	4			43	31	72
Economics	20	19	95	1	5	100	1	5			19	16	84	23	17	74	3	13	100	3	13			17	13	76
Management	42	28	67	4	10	86	5	12	5	12	28	20	71	55	46	84	3	5	94	3	5	3	5	46	31	67
Management (Scottish Borders Campus)	5	4	80	1	20	100					4	2	50	4	3	75			75			1	25	3	1	33
Languages	39	33	85	3	8	95			2	5	33	25	76	35	23	66	7	20	88	1	3	4	11	23	14	61
Combined Studies	4	4	100			100					4	4	100	5	1	20	1	20	40			3	60	1	1	100
<b>MATHEMATICAL &amp; COMPUTER SCIENCES</b>	120	98	82	7	6	95	10	8	5	4	98	80	82	137	106	77	21	15	93			10	7	94	80	85
Actuarial Mathematics & Statistics	42	38	90	2	5	100	2	5			38	32	84	36	31	86	4	11	97			1	3	31	27	87
Computer Science	35	31	89	1	3	97	2	6	1	3	31	28	90	39	32	82	4	10	92			3	8	32	26	81
Mathematics	43	29	67	4	9	89	6	14	4	9	29	20	69	62	43	69	13	21	90	6	10	6	10	31	27	87
<b>TEXTILES &amp; DESIGN</b>	98	82	84	8	8	98	6	6	2	2	82	60	73	135	113	84	7	5	93	6	4	9	7	113	83	73
Combined Studies	1	1	100			100					1	1	100	1	1	100			100					1	1	100
Textiles	97	81	84	8	8	98	6	6	2	2	81	59	73	134	112	84	7	5	93	6	4	9	7	112	83	74

The census date for graduate first destinations is 6 months following graduation.

'Employed' includes those due to start employment within the next month. 'Other' includes those who are not available for employment because of travel, family commitments, health or other reasons.

Note 1: This is the percentage of those in employment and/or further study as against the aggregated total who are in employment and/or further study or reported as 'seeking'.

Note 2: Graduate Employment is based on the SOC 2000 classification of occupations for studying the graduate labour market (Institute for Employment Research, Warwick).



SCHOOL/Division	2011/12 (January 2013 census)											2010/11 (January 2012 census)														
	No of Known Dest (KD)	No in Emp	% of KD	No in Further Study	% of KD	% in Emp/Study (note 1)	Not Available/Not Seeking	% of KD	Seeking	% of KD	Total in Emp	Graduate Level/Job (note 2)	% in Employment	No of Known Dest (KD)	No in Emp	% of KD	No in Further Study	% of KD	% in Emp/Study (note 1)	Not Available/Not Seeking	% of KD	Seeking	% of KD	Total in Emp	Graduate Level/Job (note 2)	% in Employment
<b>UNIVERSITY TOTAL</b>	797	590	74	129	16	94	30	4	47	6	797	467	59	723	521	72	128	18	94	32	4	42	6	521	378	73
<b>BUILT ENVIRONMENT</b>	120	100	83	6	5	93	6	5	8	7	120	94	78	123	100	81	13	11	94	3	2	7	6	100	84	84
Architectural Engineering	12	11	92			92			1	8	12	10	83	8	5	63	2	25	100	1	13			5	5	100
Construction Management & Surveying	50	40	80	2	4	89	3	6	5	10	50	38	76	42	34	81	4	10	93	1	2	3	7	34	27	79
Civil Engineering	40	35	88	2	5	97	2	5	1	3	40	33	83	49	44	90	2	4	96	1	2	2	4	44	37	84
Urban Studies	18	14	78	2	11	94	1	6	1	6	18	13	72	24	17	71	5	21	92					17	15	88
<b>LIFE SCIENCES</b>	113	65	58	30	27	91	9	8	9	8	113	35	31	81	45	56	22	27	91	7	9	7	9	45	19	42
Biological Sciences	53	29	55	12	23	84	4	8	8	15	53	18	34	39	18	46	11	28	85	5	13	5	13	18	10	56
Psychology	20	13	65	3	15	94	3	15	1	5	20	8	40	22	15	68	6	27	100	1	5			15	3	20
Sport & Exercise Science	40	23	58	15	38	100	2	5			40	9	23	20	12	60	5	25	89	1	5	2	10	12	6	50
<b>ENGINEERING &amp; PHYSICAL SCIENCES</b>	162	97	64	44	29	95	2	1	8	5	162	78	51	163	106	65	43	26	93	3	2	11	7	106	80	75
Chemical Engineering	33	27	82	5	15	97			1	3	33	24	73	22	18	82	4		100					18	15	83
Chemistry	26	13	50	12	46	100					26	8	31	47	24	51	19	40	91			4	9	24	18	75
Mechanical Engineering	52	35	67	14	27	94			3	6	52	31	60	35	28	80	6	17	100	1	3			28	24	86
Physics	21	9	43	9	43	90	1		2	10	21	4	19	19	9	47	9	47	95			1	5	9	4	44
Electrical, Electronic & Computer Engineering	17	12	71	3	18	94	1	6	1	6	17	11	65	26	19	73	3	12	88	1	4	3	12	19	16	84
Combined Studies	3	1	33	1	33	67			1	33	3			14	8	57	2	14	77	1	7	3	21	8	3	38
<b>MANAGEMENT &amp; LANGUAGES</b>	185	137	74	25	14	92	9	5	14	8	185	105	57	169	127	75	24	14	95	10	6	8	5	127	91	72
Accountancy & Finance	47	35	74	5	11	93	4	9	3	6	47	26	55	45	37	82	4	9	98	3	7	1	2	37	24	65
Economics	18	13	72	1	6	82	1	6	3	17	18	11	61	18	8	44	7	39	88	1	6	2	11	8	3	38
Management	74	55	74	11	15	93	3	4	5	7	74	39	53	55	42	76	7	13	96	4	7	2	4	42	33	79
Management (Scottish Borders Campus)	3	3	100								3	2	67	2	2	100								2	1	50
Languages	39	28	72	7	18	92	1	3	3	8	39	25	64	44	35	80	5	11	95	2	5	2	5	35	27	77
Combined Studies	4	3	75	1	25	100					4	2	50	5	3	60	1		80			1	20	3	3	100
<b>MATHEMATICAL &amp; COMPUTER SCIENCES</b>	123	94	76	20	16	94	2	2	7	6	123	78	63	95	69	73	14	15	91	4	4	8	8	69	53	77
Actuarial Mathematics & Statistics	40	34	85	5	13	100	1	3			40	34	85	17	15	88			94	1	6	1	6	15	14	93
Computer Science	36	26	72	4	11	86	1	3	5	14	36	23	64	33	22	67	7	21	91	1	3	3	9	22	19	86
Mathematics	47	34	72	11	23	96	2	4	2	4	47	21	45	45	32	71	7	16	91	2	4	4	9	32	20	63
<b>TEXTILES &amp; DESIGN</b>	104	97	93	4	4	99	2	2	1	1	104	77	74	92	74	80	12	13	99	5	5	1	1	74	51	69
Combined Studies	1	1	100			100					1	1	100	2	2	100			100					2	2	100
Textiles	103	96	93	4	4	99	2	2	1	1	103	76	74	90	72	80	12	13	99	5	6	1	1	72	49	68

The census date for graduate first destinations is 6 months following graduation.  
 'Employed' includes those due to start employment within the next month. 'Other' includes those who are not available for employment because of travel, family commitments, health or other reasons.  
 Note 1: This is the percentage of those in employment and/or further study as against the aggregated total who are in employment and/or further study or reported as 'seeking'.  
 Note 2: Graduate Employment is based on the SOC 2000 classification of occupations for studying the graduate labour market (Institute for Employment Research, Warwick).

National Student Survey (NSS) Results by School: 2011-2014

		1. Staff are good at explaining things.	2. Staff have made the subject interesting.	3. Staff are enthusiastic about what they are teaching.	4. The course is intellectually stimulating.	5. The criteria used in marking have been clear in advance.	6. Assessment arrangements and marking have been fair.	7. Feedback on my work has been prompt.	8. I have received detailed comments on my work.	9. Feedback on my work has helped me clarify things I did not understand.	10. I have received sufficient advice and support with my studies.	11. I have been able to contact staff when I needed to.	12. Good advice was available when I needed to make study choices.	13. The timetable works efficiently as far as my activities are concerned.	14. Any changes in the course or teaching have been communicated effectively.	15. The course is well organised and is running smoothly.	16. The library resources and services are good enough for my needs.	17. I have been able to access general IT resources when I needed to.	18. I have been able to access specialised equipment, facilities or rooms when I needed.	19. The course has helped me to present myself with confidence.	20. My communication skills have improved.	21. As a result of the course, I feel confident in tackling unfamiliar problems.	22. Overall Satisfaction	Average (22 Questions)							
UNIVERSITY AVERAGE ALL SUBJECTS 2014	% Agree	87	92	82	88	86	75	81	83	72	69	71	83	84	88	78	84	87	84	81	85	86	83	85	82	87	85	90	83		
		87	92	82	88	86	75	81	83	72	69	71	83	84	88	78	84	87	84	81	85	86	83	85	82	87	85	90	83		
		88	92	84	90	88	76	79	84	73	71	73	85	84	90	80	85	87	85	84	86	87	89	83	85	83	86	85	91	84	
		86	91	82	86	86	67	77	80	61	56	60	81	80	87	75	80	81	81	78	85	83	87	84	81	79	82	81	86	79	
LIFE SCIENCES	2014	91	93	87	89	93	69	70	79	64	64	66	88	86	93	85	82	73	93	79	85	81	89	84	71	64	71	79	87	80	
	2013	89	93	79	96	89	76	75	82	82	75	68	90	93	96	82	93	93	89	96	88	93	86	85	80	75	79	86	100	86	
	2012	84	86	81	81	89	70	75	86	50	73	87	82	87	83	89	89	74	70	75	76	76	75	76	76	76	75	79	80	89	79
	2011	94	96	88	96	96	70	69	81	46	73	81	90	92	88	88	83	88	77	85	86	77	92	88	85	77	85	92	88	84	
	2014	84	89	76	85	87	58	66	74	37	57	55	80	81	89	71	83	87	81	81	94	96	94	93	81	81	87	76	81	78	81
MANAGEMENT & LANGUAGES	2014	94	99	92	97	88	90	95	97	89	88	80	84	84	91	77	93	88	95	95	91	96	87	89	87	86	84	91	96	90	
	2013	92	95	91	94	89	81	87	84	82	73	79	86	90	92	75	91	87	93	92	92	91	84	93	92	91	84	95	92	94	88
	2012	87	91	80	95	84	82	82	82	89	81	82	78	85	85	86	83	91	88	94	91	85	90	88	77	86	86	88	83	91	86
	2011	99	99	84	90	90	58	81	85	46	39	37	82	84	87	74	89	84	87	72	80	90	92	76	77	72	80	90	91	80	80
	2014	95	96	96	96	91	88	83	89	93	87	89	90	90	90	98	83	87	77	92	92	91	94	88	89	92	90	92	94	92	88
Languages	2014	84	94	74	85	82	71	84	65	57	74	76	82	75	90	80	78	87	76	70	86	76	92	88	81	76	92	74	80	79	
	2013	91	93	86	93	91	79	90	73	71	86	78	80	77	86	77	83	80	80	78	86	81	91	85	87	85	91	85	90	85	90
	2012	87	95	83	83	88	77	85	70	70	82	77	84	88	93	70	73	83	76	60	91	88	93	92	89	88	98	81	90	83	83
	2011	88	94	84	87	86	67	80	65	58	57	64	78	78	84	72	74	73	78	72	85	75	91	90	83	82	86	80	89	79	79
	2014	86	90	84	87	86	76	84	77	75	72	74	88	87	94	82	85	85	86	83	78	79	85	69	87	87	90	83	90	83	83
TEXTILES & DESIGN	2014	66	64	63	66	70	60	65	73	49	60	51	62	54	71	61	55	67	59	38	75	81	77	65	69	64	72	71	55	63	
	2013	70	68	68	68	78	48	56	68	33	41	44	65	65	66	65	58	80	78	78	75	73	79	74	70	74	70	65	80	65	
	2012	87	84	85	87	91	67	76	81	56	59	63	80	77	81	83	80	89	75	75	93	95	94	88	83	84	82	84	81	80	81
	2011	77	76	76	81	77	58	71	76	51	49	43	68	69	72	64	68	82	65	58	58	88	88	94	80	74	71	79	73	81	72











## Contact us

### HERIOT-WATT UNIVERSITY

#### Edinburgh Campus

Edinburgh EH14 4AS

📞 0131 449 5111

#### Scottish Borders Campus

Galashiels TD1 3HF

📞 0870 050 5152

#### Orkney Campus

Old Academy, Back Road, Stromness

Orkney Islands

Scotland KW16 3AW

📞 01856 850 605

#### Dubai Campus

Dubai International Academic City

PO Box 294345

Dubai

UAE

📞 00 971 4 435 8700

#### Heriot-Watt University Malaysia

No 1 Jalan Venna P5/2

Precinct 5

62200 Putrajaya

Malaysia

📞 00 60 3 8894 3888

### MARKETING AND COMMUNICATIONS

📞 0131 451 3242

@ pr@hw.ac.uk

### STUDENT RECRUITMENT SERVICE

📞 0131 451 3451

@ edu.liaison@hw.ac.uk

### RESEARCH AND ENTERPRISE SERVICES

📞 0131 451 3192

@ res@hw.ac.uk