

09-10  
ANNUAL STATISTICS  
2009-10



# **ANNUAL STATISTICS 2009/10**

## **Contents**

	Page(s)
1 PROFILE AT A GLANCE	3
2 STUDENT NUMBERS	5 - 21
3 UNDERGRADUATE STUDENT APPLICATIONS & ADMISSIONS	22 - 27
4 FIRST DEGREES AWARDED	28
5 UNDERGRADUATE STUDENT PROGRESS	29 - 30
6 HIGHER DEGREES AWARDED	31
7 GRADUATE FIRST DESTINATIONS	32 – 34
8 NATIONAL STUDENT SURVEY	35 - 36
9 STAFF NUMBERS	37
10 FINANCE: INCOME AND EXPENDITURE	38 - 39
11 RESEARCH AND TEACHING QUALITY ASSESSMENTS	40
12 COLLABORATIVE PARTNER INSTITUTIONS	40
13 ACTIVITY STATISTICS	41

**If you would like a large print version of this document please contact the Executive Support Service, Tel: 0131 451 3738.**

## Notes

This report is published annually. Suggestions for future enhancements are welcome. Please direct any comments or enquiries to the Executive Support Service: Lorna Kirkwood-Smith, Tel: 0131 451 3631, Email: [L.A.Kirkwood-Smith@hw.ac.uk](mailto:L.A.Kirkwood-Smith@hw.ac.uk)

Student numbers information is extracted from a 'snap-shot' of the student database at a census date in early December each year.

The report is available on the staff section of the University's web home page under Management & Governance / Strategy & Performance, and is included in the University's Freedom of Information Publication Scheme at: [www.hw.ac.uk/foi/](http://www.hw.ac.uk/foi/)

More detailed reporting may be available from contributing sections. Contact details are provided below:

October 2010

## CONTACTS:

### **Academic Registry and Student Services:**

*Kathy Patterson, Academic Registrar & Deputy Secretary, Ext 3368, Email: [K.Patterson@hw.ac.uk](mailto:K.Patterson@hw.ac.uk)*

*Jean Campbell, Management Information Officer, Ext: 3383, Email: [J.M.Campbell@hw.ac.uk](mailto:J.M.Campbell@hw.ac.uk)*

*Careers Advisory Service - Nick Thow, Director, Ext: 3392, Email: [N.W.Thow@hw.ac.uk](mailto:N.W.Thow@hw.ac.uk)*

*Student Support and Accommodation – Christine Johnston, Director, Ext: 4505, Email: [C.Johnston@hw.ac.uk](mailto:C.Johnston@hw.ac.uk)*

### **Corporate Communications:**

*(Public Relations) – Kirsty MacGregor, Public Relations Manager, Ext: 3598, Email: [K.MacGregor@hw.ac.uk](mailto:K.MacGregor@hw.ac.uk)*

*(Publications) – Karen Larter, Publications Officer, Ext: 3440, Email: [K.Larter@hw.ac.uk](mailto:K.Larter@hw.ac.uk)*

### **Executive Support Service:**

*Lorna Kirkwood-Smith, Head, Ext: 3631, Email: [L.A.Kirkwood-Smith@hw.ac.uk](mailto:L.A.Kirkwood-Smith@hw.ac.uk)*

### **Finance:**

*Phil McNaull, Director of Finance & IS/IT, Ext: 3597, Email: [P.McNaull@hw.ac.uk](mailto:P.McNaull@hw.ac.uk)*

### **Planning and Resources:**

*Richard McGookin, Director of Planning, Ext: 3442, Email: [R.W.R.McGookin@hw.ac.uk](mailto:R.W.R.McGookin@hw.ac.uk)*

### **Recruitment & Admissions:**

*Michael Bates, Director, Ext: 3450, Email: [M.Bates@hw.ac.uk](mailto:M.Bates@hw.ac.uk)*

## Heriot-Watt University: Profile at a glance

**Founded:** 1821. Granted university status by Royal Charter in 1966.

**Campus Locations:** Edinburgh, Galashiels, Orkney, Dubai.

The University's main Edinburgh campus comprises 380 acres of parkland and incorporates the Edinburgh Research Park established in 1971 as the first science park of its kind in the UK. In excess of 40 companies are currently based on the Research Park. In 2009, work was completed to co-locate with Scottish Borders College at the Netherdale site.

The Heriot-Watt University Dubai Campus was established in 2005 and accepted its first cohort of students in the autumn of that year. At the start of 2009/10 the student population had reached 1,328.

The University's International Centre for Island Technology based in Stromness, Orkney Islands, is part of the University's Institute of Petroleum Engineering. The Centre concentrates on renewable energy, particularly marine energy.

### Student population:

**On-campus** (Edinburgh, Galashiels, Dubai, Orkney - headcount):-

- 6,724 undergraduate (including exchange and visiting students)
- 2,196 postgraduate taught course
- 493 postgraduate research

**On-campus** (Scottish Borders Campus - headcount):-

- 614 undergraduate (including exchange and visiting students)
- 22 postgraduate taught course
- 16 postgraduate research

One-third of the University's 'on campus' students studying in Scotland are from outside of the UK making Heriot-Watt one of the most internationally diversified of any UK universities.

**International programmes** (independent study in around 140 countries worldwide or through a network of 52 Approved Learning Partners ALPs). In HESA reporting year ending 31 July 2009 there were:

- 7,526 active ALP students
- 2,997 active independent (distance learning) students

### Staff population:

Total: 1,666 (headcount) of which:-

- 444 academic
- 173 research staff
- 504 academic/other-related
- 545 other staff (incl non standard contract staff)

### Finance (2008/09):

Income: £134.5 m.

Expenditure: £133.06 m.

### Teaching Quality:

In 2006 the Quality Assurance Agency confirmed "broad confidence" in the University's current, and likely future, management of the quality of its provision and the academic standards of its awards. This is the highest outcome possible under the ELIR (Enhancement-Led Institutional Review) system. The University's next ELIR review will take place early in 2011.

### Research Quality:

In the UK 2008 Research Assessment Exercise, around 90% of the University's academic staff were submitted with 50% of the research results rated as being internationally excellent.



**STUDENT NUMBERS (ON CAMPUS IN SCOTLAND): 2007/08 - 2009/10**

**UNDERGRADUATE students by attendance level and gender**

2009/10						2008/09						2007/08					
	ft	pt	Total	%	% change yr/yr		ft	pt	Total	%	% change yr/yr		ft	pt	Total	%	% change yr/yr
<b>Total</b>	<b>5783</b>	<b>81</b>	<b>5864</b>	<b>100.0</b>	<b>9.6</b>	<b>Total</b>	<b>5253</b>	<b>98</b>	<b>5351</b>	<b>100.0</b>	<b>3.2</b>	<b>Total</b>	<b>5029</b>	<b>156</b>	<b>5185</b>	<b>100.0</b>	<b>0.4</b>
Female	2337	27	2364	40.3	6.0	Female	2185	46	2231	41.7	1.7	Female	2121	72	2193	42.3	3.6
Male	3446	54	3500	59.7	12.2	Male	3068	52	3120	58.3	4.3	Male	2908	84	2992	57.7	-1.9

Numbers for the Dubai Campus (from 2007/08) are not included in the above figures. Dubai figures are provided on page 13

Includes home students on a year abroad or on placement as part of their studies

Excludes registered incoming exchange, non-graduating and visiting students. These are detailed on page 13

**POSTGRADUATE TAUGHT COURSE students by attendance level and gender**

2009/10						2008/09						2007/08					
	ft	pt	Total	%	% change yr/yr		ft	pt	Total	%	% change yr/yr		ft	pt	Total	%	% change yr/yr
<b>Total</b>	<b>1320</b>	<b>259</b>	<b>1579</b>	<b>100.0</b>	<b>21.5</b>	<b>Total</b>	<b>1052</b>	<b>248</b>	<b>1300</b>	<b>100.0</b>	<b>11.0</b>	<b>Total</b>	<b>994</b>	<b>177</b>	<b>1171</b>	<b>100.0</b>	<b>9.2</b>
Female	433	76	509	32.2	10.9	Female	368	91	459	35.3	10.3	Female	335	81	416	35.5	12.7
Male	887	183	1070	67.8	27.2	Male	684	157	841	64.7	11.4	Male	659	96	755	64.5	7.4

Excludes staff registrations for the Postgraduate Certificate in Academic Practice

Excludes very small numbers of registered incoming exchange, non-graduating and other visiting students

**POSTGRADUATE RESEARCH students by attendance level and gender**

2009/10						2008/09						2007/08					
	ft	pt	Total	%	% change yr/yr		ft	pt	Total	%	% change yr/yr		ft	pt	Total	%	% change yr/yr
<b>Total</b>	<b>433</b>	<b>60</b>	<b>493</b>	<b>100.0</b>	<b>2.5</b>	<b>Total</b>	<b>417</b>	<b>64</b>	<b>481</b>	<b>100.0</b>	<b>4.1</b>	<b>Total</b>	<b>397</b>	<b>65</b>	<b>462</b>	<b>100.0</b>	<b>10.0</b>
Female	122	19	141	28.6	0.0	Female	117	24	141	29.3	11.0	Female	108	19	127	27.5	12.4
Male	311	41	352	71.4	3.5	Male	300	40	340	70.7	1.5	Male	289	46	335	72.5	9.1

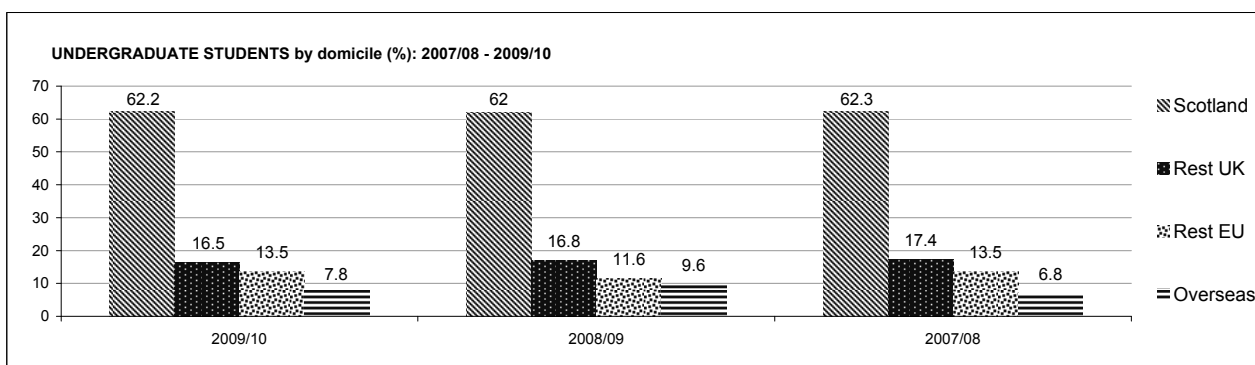
Includes small numbers of active registered students recorded as "writing up"

Excludes small numbers of registered incoming exchange, non-graduating and visiting scholars

**ALL STUDENTS by fees status (UK, other EU, overseas)**

2009/10						2008/09						2007/08					
	UK	EU	OS	Total	% change yr/yr		UK	EU	OS	Total	% change yr/yr		UK	EU	OS	Total	% change yr/yr
<b>Total</b>	<b>5154</b>	<b>1323</b>	<b>1459</b>	<b>7936</b>	<b>11.3</b>	<b>Total</b>	<b>4737</b>	<b>1143</b>	<b>1252</b>	<b>7132</b>	<b>4.6</b>	<b>Total</b>	<b>4637</b>	<b>1053</b>	<b>1128</b>	<b>6818</b>	<b>2.4</b>
UG	4613	791	460	5864	9.6	UG	4219	708	424	5351	3.2	UG	4131	702	352	5185	0.4
PGT	367	447	765	1579	21.5	PGT	363	342	595	1300	11.0	PGT	347	256	568	1171	9.2
PGR	174	85	234	493	2.5	PGR	155	93	233	481	4.1	PGR	159	95	208	462	10.0

Refer to inclusions/exclusions listed above



**UNDERGRADUATE STUDENTS BY SCHOOL/PROGRAMME, ATTENDANCE LEVEL AND GENDER: 2007/08 - 2009/10**  
**On-campus - Scotland**

	2009/10				2008/09				2007/08						
	Gend.	ft	pt	Total %	Gend.	ft	pt	Total %	Gend.	ft	pt	Total %			
<b>UNIVERSITY TOTAL</b>		<b>5783</b>	<b>81</b>	<b>5864</b>		<b>5253</b>	<b>98</b>	<b>5351</b>		<b>5029</b>	<b>156</b>	<b>5185</b>			
<b>BUILT ENVIRONMENT</b>		<b>766</b>	<b>22</b>	<b>788</b>	<b>14.9</b>	<b>709</b>	<b>15</b>	<b>724</b>	<b>15.4</b>	<b>667</b>	<b>12</b>	<b>679</b>	<b>18.9</b>		
Architectural Engineering	F	21		21	30.0	F	17		17	29.8					
	M	49		49	70.0	M	39	1	40	70.2					
<b>Total</b>		<b>70</b>		<b>70</b>		<b>56</b>	<b>1</b>	<b>57</b>							
Civil Engineering	F	53		53	14.9	F	46	1	47	15.4	F	43	43	15.6	
	M	288	14	302	85.1	M	253	5	258	84.6	M	226	7	233	84.4
<b>Total</b>		<b>341</b>	<b>14</b>	<b>355</b>		<b>299</b>	<b>6</b>	<b>305</b>		<b>269</b>	<b>7</b>	<b>276</b>			
Construction Mgt & Surveying	F	36	2	38	16.8	F	32	2	34	16.9	F	39		39	15.4
	M	185	3	188	83.2	M	163	4	167	83.1	M	213	1	214	84.6
<b>Total</b>		<b>221</b>	<b>5</b>	<b>226</b>		<b>195</b>	<b>6</b>	<b>201</b>		<b>252</b>	<b>1</b>	<b>253</b>			
Urban Studies	F	44	1	45	32.8	F	54		54	33.5	F	46		46	30.7
	M	90	2	92	67.2	M	105	2	107	66.5	M	100	4	104	69.3
<b>Total</b>		<b>134</b>	<b>3</b>	<b>137</b>		<b>159</b>	<b>2</b>	<b>161</b>		<b>146</b>	<b>4</b>	<b>150</b>			
<b>ENGINEERING &amp; PHYSICAL SCIENCES</b>		<b>1467</b>	<b>18</b>	<b>1485</b>	<b>19.5</b>	<b>1317</b>	<b>13</b>	<b>1330</b>	<b>21.2</b>	<b>1292</b>	<b>25</b>	<b>1317</b>	<b>21.3</b>		
Chemical Engineering	F	47		47	20.3	F	43		43	24.0	F	47		47	29.7
	M	183	1	184	79.7	M	136		136	76.0	M	111		111	70.3
<b>Total</b>		<b>230</b>	<b>1</b>	<b>231</b>		<b>179</b>	<b>1</b>	<b>179</b>		<b>158</b>		<b>158</b>			
Chemistry	F	129		129	44.8	F	124		124	46.3	F	126		126	47.5
	M	159		159	55.2	M	144		144	53.7	M	139		139	52.5
<b>Total</b>		<b>288</b>		<b>288</b>		<b>268</b>		<b>268</b>		<b>265</b>		<b>265</b>			
Combined Studies (BSc/BEng)	F	36	3	39	22.3	F	41	2	43	26.4	F	35	1	36	21.7
	M	128	8	136	77.7	M	113	7	120	73.6	M	116	14	130	78.3
<b>Total</b>		<b>164</b>	<b>11</b>	<b>175</b>		<b>154</b>	<b>9</b>	<b>163</b>		<b>151</b>	<b>15</b>	<b>166</b>			
Electrical, Electronic & Computer Engineering	F	15		15	8.7	F	15		15	9.0	F	14		14	7.1
	M	157		157	91.3	M	151	1	152	91.0	M	182	1	183	92.9
<b>Total</b>		<b>172</b>		<b>172</b>		<b>166</b>	<b>1</b>	<b>167</b>		<b>196</b>	<b>1</b>	<b>197</b>			
Mechanical Engineering	F	34		34	7.7	F	34		34	8.6	F	32		32	8.6
	M	401	5	406	92.3	M	358	3	361	91.4	M	331	7	338	91.4
<b>Total</b>		<b>435</b>	<b>5</b>	<b>440</b>		<b>392</b>	<b>3</b>	<b>395</b>		<b>363</b>	<b>7</b>	<b>370</b>			
Physics	F	26		26	14.5	F	23		23	14.6	F	26		26	16.1
	M	152	1	153	85.5	M	135		135	85.4	M	133	2	135	83.9
<b>Total</b>		<b>178</b>	<b>1</b>	<b>179</b>		<b>158</b>		<b>158</b>		<b>159</b>	<b>2</b>	<b>161</b>			
<b>LIFE SCIENCES</b>		<b>677</b>	<b>7</b>	<b>684</b>	<b>50.9</b>	<b>561</b>	<b>8</b>	<b>569</b>	<b>50.8</b>	<b>544</b>	<b>9</b>	<b>553</b>	<b>52.4</b>		
Biology	F	171	2	173	52.3	F	140	1	141	49.1	F	145	4	149	49.7
	M	156	2	158	47.7	M	144	2	146	50.9	M	148	3	151	50.3
<b>Total</b>		<b>327</b>	<b>4</b>	<b>331</b>		<b>284</b>	<b>3</b>	<b>287</b>		<b>293</b>	<b>7</b>	<b>300</b>			
Psychology	F	115	2	117	66.9	F	99		99	73.9	F	97	1	98	74.2
	M	58		58	33.1	M	34	1	35	26.1	M	34		34	25.8
<b>Total</b>		<b>173</b>	<b>2</b>	<b>175</b>		<b>133</b>	<b>1</b>	<b>134</b>		<b>131</b>	<b>1</b>	<b>132</b>			
Sport & Exercise Science	F	58		58	32.6	F	47	2	49	33.1	F	43		43	35.5
	M	119	1	120	67.4	M	97	2	99	66.9	M	77	1	78	64.5
<b>Total</b>		<b>177</b>	<b>1</b>	<b>178</b>		<b>144</b>	<b>4</b>	<b>148</b>		<b>120</b>	<b>1</b>	<b>121</b>			
<b>MANAGEMENT &amp; LANGUAGES</b>		<b>1515</b>	<b>23</b>	<b>1538</b>	<b>50.8</b>	<b>1435</b>	<b>54</b>	<b>1489</b>	<b>53.1</b>	<b>1355</b>	<b>107</b>	<b>1462</b>	<b>55.8</b>		
Accountancy & Finance	F	191	3	194	43.8	F	177	3	180	46.2	F	171	3	174	47.9
	M	245	4	249	56.2	M	205	5	210	53.8	M	182	7	189	52.1
<b>Total</b>		<b>436</b>	<b>7</b>	<b>443</b>		<b>382</b>	<b>8</b>	<b>390</b>		<b>353</b>	<b>10</b>	<b>363</b>			
Combined Studies (BA)	F	15	1	16	34.8	F	10		10	30.3	F	24	1	25	41.0
	M	30		30	65.2	M	21	2	23	69.7	M	31	5	36	59.0
<b>Total</b>		<b>45</b>	<b>1</b>	<b>46</b>		<b>31</b>	<b>2</b>	<b>33</b>		<b>55</b>	<b>6</b>	<b>61</b>			
Economics	F	48	2	50	27.6	F	52		52	31.7	F	45		45	27.8
	M	127	4	131	72.4	M	108	4	112	68.3	M	113	4	117	72.2
<b>Total</b>		<b>175</b>	<b>6</b>	<b>181</b>		<b>160</b>	<b>4</b>	<b>164</b>		<b>158</b>	<b>4</b>	<b>162</b>			
Languages	F	244		244	79.7	F	238	1	239	79.9	F	246	2	248	80.8
	M	62		62	20.3	M	60		60	20.1	M	58	1	59	19.2
<b>Total</b>		<b>306</b>		<b>306</b>		<b>298</b>	<b>1</b>	<b>299</b>		<b>304</b>	<b>3</b>	<b>307</b>			
Management	F	207	2	209	49.2	F	208	1	209	49.3	F	205	2	207	53.9
	M	211	5	216	50.8	M	212	3	215	50.7	M	173	4	177	46.1
<b>Total</b>		<b>418</b>	<b>7</b>	<b>425</b>		<b>420</b>	<b>4</b>	<b>424</b>		<b>378</b>	<b>6</b>	<b>384</b>			
Management (Scottish Borders Campus)	F	43		43	48.9	F	47	2	49	52.7	F	53	1	54	58.7
	M	44	1	45	51.1	M	44		44	47.3	M	38		38	41.3
<b>Total</b>		<b>87</b>	<b>1</b>	<b>88</b>		<b>91</b>	<b>2</b>	<b>93</b>		<b>91</b>	<b>1</b>	<b>92</b>			
Management (Link Programme)	F					F	24	24	72.7	F	54	54	71.1		
	M					M	9	9	27.3	M	22	22	28.9		
<b>Total</b>						<b>33</b>	<b>33</b>			<b>76</b>	<b>76</b>				
Foundation English/Interpreting Studies	F	12	1	13	26.5	F	12		12	22.6	F	4		4	23.5
	M	36		36	73.5	M	41		41	77.4	M	12	1	13	76.5
<b>Total</b>		<b>48</b>	<b>1</b>	<b>49</b>		<b>53</b>		<b>53</b>		<b>16</b>	<b>1</b>	<b>17</b>			
<b>MATHEMATICAL &amp; COMPUTER SCIENCES</b>		<b>840</b>	<b>4</b>	<b>844</b>	<b>34.5</b>	<b>735</b>	<b>2</b>	<b>737</b>	<b>32.8</b>	<b>688</b>		<b>688</b>	<b>31.1</b>		
Actuarial Mathematics & Statistics	F	125		125	41.7	F	115		115	42.3	F	86		86	35.7
	M	175		175	58.3	M	157		157	57.7	M	155		155	64.3
<b>Total</b>		<b>300</b>		<b>300</b>		<b>272</b>		<b>272</b>		<b>241</b>		<b>241</b>			
Computer Science	F	28		28	10.9	F	23		23	9.6	F	21		21	9.0
	M	225	3	228	89.1	M	216		216	90.4	M	213		213	91.0
<b>Total</b>		<b>253</b>	<b>3</b>	<b>256</b>		<b>239</b>		<b>239</b>		<b>234</b>		<b>234</b>			
Mathematics	F	137	1	138	47.9	F	103	1	104	46.0	F	107		107	50.2
	M	150		150	52.1	M	121	1	122	54.0	M	106		106	49.8
<b>Total</b>		<b>287</b>	<b>1</b>	<b>288</b>		<b>224</b>	<b>2</b>	<b>226</b>		<b>213</b>		<b>213</b>			
<b>TEXTILES &amp; DESIGN</b>		<b>518</b>	<b>7</b>	<b>525</b>	<b>97.0</b>	<b>496</b>	<b>6</b>	<b>502</b>	<b>97.8</b>	<b>483</b>	<b>3</b>	<b>486</b>	<b>96.5</b>		
Combined Studies	F	7	1	8	100.0	F	10	1	11	100.0	F	8		8	100.0
	M				0.0	M				0.0	M				0.0
<b>Total</b>		<b>7</b>	<b>1</b>	<b>8</b>		<b>10</b>	<b>1</b>	<b>11</b>		<b>8</b>		<b>8</b>			
Textiles & Design	F	495	6	501	96.9	F	475	5	480	97.8	F	458	3	461	96.4
	M	16		16	3.1	M	11		11	2.2	M	17		17	3.6
<b>Total</b>		<b>511</b>	<b>6</b>	<b>517</b>		<b>486</b>	<b>5</b>	<b>491</b>		<b>475</b>	<b>3</b>	<b>478</b>			

Percentage totals for Schools relate to the female population  
 Note inclusions/exclusions detailed on page 5  
 School of the Built Environment programmes were reconfigured in 2008/09



**UNDERGRADUATE STUDENTS BY SCHOOL/PGI/PROGRAMME AND FEE TYPE: 2007/08 - 2009/10**  
**On-campus - Scotland**

SCHOOL/Programme	2009/10						2008/09						2007/08																		
	UK		EU		OS		UK		EU		OS		UK		EU		OS														
	ft	pt	Tot.	ft	pt	Tot.	ft	pt	Tot.	ft	pt	Tot.	ft	pt	Tot.	ft	pt	Tot.													
<b>UNIVERSITY TOTAL</b>	4585	60	4645	736	13	749	462	8	470	5864	4140	79	4219	698	10	708	362	62	424	5351	3983	148	4131	699	3	702	347	5	352	5185	
<b>BUILT ENVIRONMENT</b>	638	17	655	91	4	95	37	1	38	788	579	9	588	92	3	95	38	3	41	724	551	11	562	95	1	96	21	21	679		
Architectural Engineering	58		58	7		7	5		5	70	45	1	46	7		7	4		4	57											
Civil Engineering	265	13	278	63	1	64	13		13	355	240	4	244	55	2	57	4		4	305	222	6	228	46	1	47	1	1	276		
Construction Mgt & Surveying	199	2	201	11	2	13	11	1	12	226	170	3	173	14	1	15	11	2	13	201	210	1	211	30	30	12	12	253			
Urban Studies	116	2	118	10	1	11	8		8	137	124	1	125	16		16	19	1	20	161	119	4	123	19	19	8	8	150			
<b>ENGINEERING &amp; PHYSICAL SCIENCES</b>	1089	16	1105	284	2	286	94		94	1485	1018	12	1030	230	1	231	69		69	1330	970	23	993	248	1	249	74	1	75	1317	
Chemical Engineering	193	1	194	13		13	24		24	231	152	14	166	14		14	13		13	179	131		131	10	10	17	17	158			
Chemistry	206		206	78		78	4		4	288	219		219	44		44	5		5	268	204		204	59	59	2	2	265			
Combined Studies (BSc/BEng)	132	10	142	20	1	21	12		12	175	119	8	127	26	1	27	9		9	163	118	13	131	21	1	22	12	1	13	166	
Electrical, Electronic & Computer Engineering	119		119	32		32	21		21	172	116	1	117	30		30	20		20	167	136	1	137	41	41	19	19	197			
Mechanical Engineering	313	4	317	92	1	93	30		30	440	295	3	298	76		76	21		21	395	275	7	282	66	66	22	22	370			
Physics	126	1	127	49	3	52	3		3	179	117	1	118	40		40	1		1	158	106	2	108	51	51	2	2	161			
<b>LIFE SCIENCES</b>	585	6	591	78	1	79	14		14	684	483	6	489	66	2	68	12		12	569	460	9	469	70	70	14	14	14	553		
Biology	250	4	254	65		65	12		12	331	221	2	223	53	1	54	10		10	287	228	7	235	53	53	12	12	300			
Psychology	162	2	164	9		9	2		2	175	122		122	9	1	10	2		2	134	115	1	116	14	14	2	2	132			
Sport & Exercise Science	173		173	4		4	5		5	178	140	4	144	4		4			4	148	117	1	118	3	3			121			
<b>MANAGEMENT &amp; LANGUAGES</b>	1113	12	1125	206	5	211	196	6	202	1538	1014	44	1058	232	4	236	136	59	195	1489	1006	102	1108	205	1	206	144	4	148	1462	
Accountancy & Finance	336	5	341	28		28	72	2	74	443	302	3	305	29	2	31	51	3	54	390	281	10	291	17	17	55	55	363			
Combined Studies (BA)	22	1	23	13		13	10		10	46	22	1	23	6	1	7	3		3	33	48	5	53	3	3	4	1	5	61		
Economics	120	3	123	37	2	39	18	1	19	181	107	3	110	31		31	22	1	23	164	109	4	113	26	26	23	23	162			
Languages	247		247	57		57	2		2	306	228	1	229	60		60	10		10	299	236	2	238	63	1	64	5	5	307		
Management	319	3	322	61	1	62	38	3	41	425	324	3	327	50		50	46	1	47	424	287	5	302	53	53	28	1	29	384		
Management (Scottish Borders Campus)	69		69	10		10	8		8	88	31		31	56		56	4		4	93	35		35	43	43	1	1	14	92		
Management (Link Programme)											33		33							33			76					76			
Foundation English/Interpreting Studies										49										53								16	1	17	17
<b>MATHEMATICAL &amp; COMPUTER SCIENCES</b>	658	3	661	68	1	69	114		114	844	576	2	578	66		66	93		93	737	528		528	73	73	87	87	688			
Actuarial Mathematics & Statistics	204		204	15		15	81		81	300	192		192	15		15	65		65	272	160		160	19	19	62	62	241			
Computer Science	202	2	204	41	1	42	10		10	256	181		181	42		42	16		16	239	182		182	44	44	8	8	234			
Mathematics	252	1	253	12		12	23		23	288	203	2	205	9		9	12		12	226	186		186	10	10	17	17	213			
<b>TEXTILES &amp; DESIGN</b>	502	6	508	9	9	18	7	1	8	525	470	6	476	12		12	14		14	502	468	3	471	8	8	7	7	486			
Combined Studies	495	5	500	9		9	7	1	8	517	10	1	11			11			11	491	8		8			8	8	8			
Textiles & Design	7	1	8						8	8	460	5	465	12		12	14		14	491	460	3	463	8	8	7	7	478			

Note inclusions/exclusions detailed on page 5  
School of the Built Environment programmes were reconfigured in 2008/09

POSTGRADUATE TAUGHT STUDENTS BY SCHOOL/PROGRAMME, ATTENDANCE LEVEL AND GENDER 2007/08 - 2009/10

On-campus - Scotland

	2009/10				2008/09				2007/08						
	Gen.	ft	pt	Total	%	Gen.	ft	pt	Total	%	Gen.	ft	pt	Total	%
<b>UNIVERSITY TOTAL</b>		<b>1320</b>	<b>259</b>	<b>1579</b>			<b>1052</b>	<b>248</b>	<b>1300</b>			<b>994</b>	<b>177</b>	<b>1171</b>	
<b>BUILT ENVIRONMENT</b>		<b>218</b>	<b>79</b>	<b>297</b>	<b>28.4</b>		<b>200</b>	<b>95</b>	<b>295</b>	<b>27.0</b>		<b>193</b>	<b>95</b>	<b>288</b>	<b>35.1</b>
Architectural Engineering	F	3	1	4	26.7	F	1	2	3	21.4	F				
	M	7	4	11	73.3	M	6	5	11	78.6	M				
<b>Total</b>		<b>10</b>	<b>5</b>	<b>15</b>			<b>7</b>	<b>7</b>	<b>14</b>						
Civil Engineering	F	8	2	10	14.5	F	5	4	9	13.6	F	7	3	10	20.0
	M	48	11	59	85.5	M	42	15	57	86.4	M	26	14	40	80.0
<b>Total</b>		<b>56</b>	<b>13</b>	<b>69</b>			<b>47</b>	<b>19</b>	<b>66</b>			<b>33</b>	<b>17</b>	<b>50</b>	
Construction Mgt & Surveying	F	17	4	21	20.2	F	14	6	20	20.0	F	19	6	25	23.8
	M	63	20	83	79.8	M	58	22	80	80.0	M	63	17	80	76.2
<b>Total</b>		<b>80</b>	<b>24</b>	<b>104</b>			<b>72</b>	<b>28</b>	<b>100</b>			<b>82</b>	<b>23</b>	<b>105</b>	
Urban Studies	F	28	21	49	45.0	F	25	22	47	40.9	F	33	33	66	49.6
	M	44	16	60	55.0	M	49	19	68	59.1	M	45	22	67	50.4
<b>Total</b>		<b>72</b>	<b>37</b>	<b>109</b>			<b>74</b>	<b>41</b>	<b>115</b>			<b>78</b>	<b>55</b>	<b>133</b>	
<b>ENGINEERING &amp; PHYSICAL SCIENCES</b>		<b>230</b>	<b>148</b>	<b>378</b>	<b>19.8</b>		<b>188</b>	<b>118</b>	<b>306</b>	<b>22.7</b>		<b>182</b>	<b>32</b>	<b>214</b>	<b>14.9</b>
Chemical Engineering	F	2		2	13.3	F	3		3	21.4	F	8	6	14	16.9
	M	13		13	86.7	M	11		11	78.6	M	45	24	69	83.1
<b>Total</b>		<b>15</b>		<b>15</b>			<b>14</b>		<b>14</b>			<b>53</b>	<b>30</b>	<b>83</b>	
Chemistry	F	4		4	40.0	F	11		11	73.3	F	4	1	5	83.3
	M	6		6	60.0	M	4		4	26.7	M	1		1	16.7
<b>Total</b>		<b>10</b>		<b>10</b>			<b>15</b>		<b>15</b>			<b>5</b>	<b>1</b>	<b>6</b>	
Electrical, Electronic & Computer Engineering	F	15		15	16.3	F	8		8	14.8	F	6		6	9.0
	M	76	1	77	83.7	M	45	1	46	85.2	M	61		61	91.0
<b>Total</b>		<b>91</b>	<b>1</b>	<b>92</b>			<b>53</b>	<b>1</b>	<b>54</b>			<b>67</b>		<b>67</b>	
Mechanical Engineering	F	19	34	53	21.8	F	16	36	52	26.7	F	4	1	5	22.7
	M	77	113	190	78.2	M	62	81	143	73.3	M	17		17	77.3
<b>Total</b>		<b>96</b>	<b>147</b>	<b>243</b>			<b>78</b>	<b>117</b>	<b>195</b>			<b>21</b>	<b>1</b>	<b>22</b>	
Physics	F	3		3	16.7	F	3		3	10.7	F	6		6	16.7
	M	15		15	83.3	M	25		25	89.3	M	30		30	83.3
<b>Total</b>		<b>18</b>		<b>18</b>			<b>28</b>		<b>28</b>			<b>36</b>		<b>36</b>	
<b>LIFE SCIENCES</b>		<b>74</b>	<b>5</b>	<b>79</b>	<b>39.2</b>		<b>43</b>	<b>16</b>	<b>59</b>	<b>46.7</b>		<b>46</b>		<b>46</b>	<b>39.1</b>
Biology	F	26	5	31	39.2	F	19	2	21	46.7	F	18		18	39.1
	M	48		48	60.8	M	24		24	53.3	M	28		28	60.9
<b>Total</b>		<b>74</b>	<b>5</b>	<b>79</b>			<b>43</b>	<b>2</b>	<b>45</b>			<b>46</b>		<b>46</b>	
Psychology	F					F	11		11	78.6					
	M					M	3		3	21.4					
<b>Total</b>							<b>14</b>		<b>14</b>						
<b>MANAGEMENT &amp; LANGUAGES</b>		<b>311</b>	<b>7</b>	<b>318</b>	<b>52.8</b>		<b>302</b>	<b>6</b>	<b>308</b>	<b>53.2</b>		<b>275</b>	<b>19</b>	<b>294</b>	<b>60.3</b>
Accountancy & Finance	F	11		11	26.2	F	14		14	26.4	F	15		15	39.5
	M	31		31	73.8	M	39		39	73.6	M	23		23	60.5
<b>Total</b>		<b>42</b>		<b>42</b>			<b>53</b>		<b>53</b>			<b>38</b>		<b>38</b>	
Economics	F					F					F	1		1	25.0
	M					M					M	3		3	75.0
<b>Total</b>												<b>4</b>		<b>4</b>	
Languages	F	37		37	71.2	F	41		41	69.5	F	51	14	65	80.2
	M	15		15	28.8	M	18		18	30.5	M	16		16	19.8
<b>Total</b>		<b>52</b>		<b>52</b>			<b>59</b>		<b>59</b>			<b>67</b>	<b>14</b>	<b>81</b>	
Management	F	116	4	120	53.6	F	104	5	109	55.6	F	76	3	79	63.2
	M	101	3	104	46.4	M	86	1	87	44.4	M	45	1	46	36.8
<b>Total</b>		<b>217</b>	<b>7</b>	<b>224</b>			<b>190</b>	<b>6</b>	<b>196</b>			<b>121</b>	<b>4</b>	<b>125</b>	
Management (Scottish Borders Campus)	F					F					F	15	1	16	34.8
	M					M					M	30		30	65.2
<b>Total</b>												<b>45</b>	<b>1</b>	<b>46</b>	
<b>MATHEMATICAL &amp; COMPUTER SCIENCES</b>		<b>218</b>	<b>5</b>	<b>223</b>	<b>30.5</b>		<b>142</b>	<b>3</b>	<b>145</b>	<b>40.0</b>		<b>149</b>	<b>6</b>	<b>155</b>	<b>22.6</b>
Actuarial Mathematics & Statistics	F	39		39	36.1	F	43		43	51.2	F	22		22	30.1
	M	68	1	69	63.9	M	41		41	48.8	M	50	1	51	69.9
<b>Total</b>		<b>107</b>	<b>1</b>	<b>108</b>			<b>84</b>		<b>84</b>			<b>72</b>	<b>1</b>	<b>73</b>	
Computer Science	F	12		12	16.9	F	10		10	23.3	F	9		9	14.8
	M	59		59	83.1	M	32	1	33	76.7	M	51	1	52	85.2
<b>Total</b>		<b>71</b>		<b>71</b>			<b>42</b>	<b>1</b>	<b>43</b>			<b>60</b>	<b>1</b>	<b>61</b>	
Mathematics	F	16	1	17	38.6	F	5		5	27.8	F	4		4	19.0
	M	24	3	27	61.4	M	11	2	13	72.2	M	13	4	17	81.0
<b>Total</b>		<b>40</b>	<b>4</b>	<b>44</b>			<b>16</b>	<b>2</b>	<b>18</b>			<b>17</b>	<b>4</b>	<b>21</b>	
<b>TEXTILES &amp; DESIGN</b>		<b>22</b>		<b>22</b>	<b>77.3</b>		<b>16</b>		<b>16</b>	<b>68.8</b>		<b>16</b>		<b>16</b>	<b>62.5</b>
Textiles & Design	F	17		17	77.3	F	11		11	68.8	F	10		10	62.5
	M	5		5	22.7	M	5		5	31.3	M	6		6	37.5
<b>PETROLEUM ENGINEERING</b>		<b>200</b>	<b>1</b>	<b>201</b>	<b>23.9</b>		<b>131</b>		<b>131</b>	<b>19.1</b>		<b>107</b>		<b>107</b>	<b>15.9</b>
Petroleum Engineering	F	48		48	23.9	F	25		25	19.1	F	17		17	15.9
	M	152	1	153	76.1	M	106		106	80.9	M	90		90	84.1
<b>EDINBURGH BUSINESS SCHOOL</b>		<b>47</b>	<b>14</b>	<b>61</b>	<b>26.2</b>		<b>30</b>	<b>10</b>	<b>40</b>	<b>32.5</b>		<b>26</b>	<b>25</b>	<b>51</b>	<b>45.1</b>
Edinburgh Business School	F	12	4	16	26.2	F	10	3	13	32.5	F	10	13	23	45.1
	M	35	10	45	73.8	M	20	7	27	67.5	M	16	12	28	54.9

Percentage totals for Schools/Institutes relate to the female population

Note inclusions/exclusions detailed on page 5

School of the Built Environment programmes were reconfigured in 2008/09

Postgraduate Management courses were relocated to the Edinburgh campus after 2007/08

**POSTGRADUATE TAUGHT COURSE STUDENTS BY SCHOOL/PGI/PROGRAMME AND FEE TYPE 2007/08 - 2009/10**  
**On-campus - Scotland**

SCHOOL/Programme	2009/10					2008/09					2007/08																				
	UK	EU	OS	EU	OS	UK	EU	OS	EU	OS	UK	EU	OS	EU	OS																
	ft	pt	Tot.	ft	pt	Tot.	ft	pt	Tot.	ft	pt	Tot.	ft	pt	Tot.																
<b>UNIVERSITY TOTAL</b>	268	89	367	293	154	447	759	6	765	1579	226	104	330	224	122	346	602	22	624	1300	227	120	347	219	37	256	548	20	568	1171	
<b>BUILT ENVIRONMENT</b>	67	70	137	50	5	55	101	4	105	297	75	83	158	46	4	50	79	8	87	295	64	79	143	35	5	40	94	11	105	288	
Architectural Engineering	3	5	8	1	1	2	6	6	15	15	1	6	7	1	1	2	5	5	14												
Civil Engineering	20	11	31	13	2	15	23	23	69	69	8	16	24	15	2	17	24	1	25	66	12	12	24	8	3	11	13	2	15	50	
Construction Mgt & Surveying	21	19	40	20	2	22	39	3	42	104	19	22	41	12	1	13	41	5	46	100	11	17	28	8	2	10	63	4	67	105	
Urban Studies	23	35	58	16	1	17	33	1	34	109	47	39	86	18	18	9	2	11	115		41	50	91	19	19	18	5	23	133		
<b>ENGINEERING &amp; PHYSICAL SCIENCES</b>	40	1	41	78	147	225	112	112	378	45	2	47	59	116	175	84	84	306	84	306	47	4	51	60	27	87	75	1	76	214	
Chemical Engineering	2	2	4	7	6	13	6	6	15	15	4	4	5	5	5	5	5	14	14	14	14	2	16	30	27	57	9	1	10	83	
Chemistry	6	6	12	1	1	2	3	3	10	10	8	8	4	4	4	3	3	15	15	15	4	1	5	5	5	5	5	5	5	6	
Electrical, Electronic & Computer Engineering	6	1	7	15	15	70	70	70	92	92	1	2	4	4	4	48	48	54	54	54	8	8	15	15	15	15	15	15	15	44	67
Mechanical Engineering	22	22	44	52	147	199	22	22	243	243	24	1	25	38	116	154	16	16	195	195	7	7	1	8	10	10	10	4	4	22	
Physics	4	4	8	3	3	11	11	11	18	18	8	8	8	8	12	12	12	12	12	12	14	14	14	5	5	5	17	17	17	36	
<b>LIFE SCIENCES</b>	23	5	28	15	15	36	36	36	79	79	10	2	12	7	7	26	14	40	59	59	16	16	16	7	7	7	23	23	23	46	
Biology	23	5	28	15	15	36	36	36	79	79	10	2	12	7	7	26	14	40	59	59	16	16	16	7	7	7	23	23	23	46	
Psychology																															
<b>MANAGEMENT &amp; LANGUAGES</b>	49	5	54	90	2	92	172	172	318	318	41	5	46	71	1	72	190	190	308	308	39	16	55	81	1	82	155	2	157	294	
Accountancy & Finance	5	5	10	15	15	30	30	30	42	42	5	5	14	14	14	34	34	53	53	53	4	4	4	13	13	13	21	21	21	38	
Economics																					1	1	1	1	1	1	1	1	1	1	4
Languages	15	15	30	23	23	46	46	46	52	52	13	13	28	28	28	18	18	59	59	59	12	14	26	38	38	38	17	17	17	81	
Management	29	5	34	52	2	54	136	136	224	224	23	5	28	29	1	30	138	138	196	196	17	2	19	22	1	23	82	1	83	125	
Management (Scottish Borders Campus)																					5	5	5	8	8	8	8	8	8	33	46
<b>MATHEMATICAL &amp; COMPUTER SCIENCES</b>	33	4	37	36	36	149	149	149	223	223	25	3	28	32	32	85	85	145	145	145	28	4	32	25	1	26	96	1	97	155	
Actuarial Mathematics & Statistics	16	16	32	18	18	73	73	73	108	108	8	8	16	16	16	60	60	84	84	84	8	8	8	9	9	9	9	9	9	56	73
Computer Science	7	7	14	13	13	51	51	51	71	71	6	1	7	12	12	24	24	43	43	43	12	1	13	13	13	13	13	13	35	61	
Mathematics	10	4	14	5	5	25	25	25	44	44	11	2	13	4	4	1	1	18	18	18	8	3	11	3	1	4	6	6	21		
<b>TEXTILES &amp; DESIGN</b>	7	7	14	4	4	11	11	11	22	22	8	8	8	8	8	8	8	16	16	16	6	6	6	6	6	6	6	6	6	10	16
<b>PETROLEUM ENGINEERING</b>	43	43	86	20	20	137	137	137	201	201	19	19	9	9	9	103	103	131	131	131	25	25	25	9	9	9	9	9	9	73	107
<b>EDINBURGH BUSINESS SCHOOL</b>	6	14	20	41	41	61	61	61	61	61	3	9	12	1	1	27	27	40	40	40	2	17	19	2	3	5	22	5	27	51	

Note inclusions/exclusions detailed on page 5  
School of the Built Environment programmes reconfigured in 2008/09

POSTGRADUATE RESEARCH STUDENTS BY SCHOOL/PROGRAMME, ATTENDANCE LEVEL AND GENDER: 2007/08 - 2009/10

On-campus - Scotland

	2009/10				2008/09				2007/08						
	Gend.	ft	pt	Total %	Gend.	ft	pt	Total %	Gend.	ft	pt	Total %			
<b>UNIVERSITY TOTAL</b>		<b>433</b>	<b>60</b>	<b>493</b>		<b>417</b>	<b>64</b>	<b>481</b>		<b>397</b>	<b>65</b>	<b>462</b>			
<b>BUILT ENVIRONMENT</b>		<b>56</b>	<b>15</b>	<b>71</b>	<b>35.2</b>		<b>45</b>	<b>15</b>	<b>60</b>	<b>31.7</b>		<b>39</b>	<b>14</b>	<b>53</b>	<b>30.2</b>
Civil Engineering	F	7	1	8	34.8	F	5	1	6	31.6	F	2		2	11.1
	M	12	3	15	65.2	M	11	2	13	68.4	M	13	3	16	88.9
<b>Total</b>		<b>19</b>	<b>4</b>	<b>23</b>		<b>16</b>	<b>3</b>	<b>19</b>		<b>15</b>	<b>3</b>	<b>18</b>		<b>18</b>	
Construction Management & Surveying	F	6	2	8	25.8	F	3	2	5	19.2	F	4	1	5	25.0
	M	14	9	23	74.2	M	12	9	21	80.8	M	7	8	15	75.0
<b>Total</b>		<b>20</b>	<b>11</b>	<b>31</b>		<b>15</b>	<b>11</b>	<b>26</b>		<b>11</b>	<b>9</b>	<b>20</b>		<b>20</b>	
Urban Studies	F	9		9	52.9	F	7	1	8	53.3	F	7	2	9	60.0
	M	8		8	47.1	M	7		7	46.7	M	6		6	40.0
<b>Total</b>		<b>17</b>		<b>17</b>		<b>14</b>	<b>1</b>	<b>15</b>		<b>13</b>	<b>2</b>	<b>15</b>		<b>15</b>	
<b>ENGINEERING &amp; PHYSICAL SCIENCES</b>		<b>206</b>	<b>10</b>	<b>216</b>	<b>20.4</b>		<b>184</b>	<b>11</b>	<b>195</b>	<b>20.0</b>		<b>172</b>	<b>17</b>	<b>189</b>	<b>18.0</b>
Chemical Engineering	F	5		5	27.8	F	5		5	27.8	F	3		3	21.4
	M	13		13	72.2	M	12	1	13	72.2	M	10	1	11	78.6
<b>Total</b>		<b>18</b>		<b>18</b>		<b>17</b>	<b>1</b>	<b>18</b>		<b>13</b>	<b>1</b>	<b>14</b>		<b>14</b>	
Chemistry	F	11		11	29.7	F	10		10	27.8	F	12		12	35.3
	M	26		26	70.3	M	26		26	72.2	M	22		22	64.7
<b>Total</b>		<b>37</b>		<b>37</b>		<b>36</b>		<b>36</b>		<b>34</b>		<b>34</b>		<b>34</b>	
Electrical, Electronic & Computer Engineering	F	7		7	15.6	F	6		6	14.6	F	4	1	5	8.8
	M	36	2	38	84.4	M	33	2	35	85.4	M	43	9	52	91.2
<b>Total</b>		<b>43</b>	<b>2</b>	<b>45</b>		<b>39</b>	<b>2</b>	<b>41</b>		<b>47</b>	<b>10</b>	<b>57</b>		<b>57</b>	
Mechanical Engineering	F	9	1	10	22.7	F	5	1	6	16.7	F	4		4	13.8
	M	30	4	34	77.3	M	26	4	30	83.3	M	21	4	25	86.2
<b>Total</b>		<b>39</b>	<b>5</b>	<b>44</b>		<b>31</b>	<b>5</b>	<b>36</b>		<b>25</b>	<b>4</b>	<b>29</b>		<b>29</b>	
Physics	F	11		11	15.3	F	12		12	18.8	F	10		10	18.2
	M	58	3	61	84.7	M	49	3	52	81.3	M	43	2	45	81.8
<b>Total</b>		<b>69</b>	<b>3</b>	<b>72</b>		<b>61</b>	<b>3</b>	<b>64</b>		<b>53</b>	<b>2</b>	<b>55</b>		<b>55</b>	
<b>LIFE SCIENCES</b>		<b>27</b>	<b>11</b>	<b>38</b>	<b>36.1</b>		<b>30</b>	<b>10</b>	<b>40</b>	<b>38.5</b>		<b>27</b>	<b>9</b>	<b>36</b>	<b>34.4</b>
Biology	F	8	1	9	29.0	F	9	1	10	30.3	F	6	1	7	25.9
	M	15	7	22	71.0	M	18	5	23	69.7	M	17	3	20	74.1
<b>Total</b>		<b>23</b>	<b>8</b>	<b>31</b>		<b>27</b>	<b>6</b>	<b>33</b>		<b>23</b>	<b>4</b>	<b>27</b>		<b>27</b>	
Psychology	F	1	3	4	80.0	F	1	4	5	83.3	F	1	3	4	80.0
	M	1		1	20.0	M	1		1	100.0	M	1		1	33.3
<b>Total</b>		<b>2</b>	<b>3</b>	<b>5</b>		<b>2</b>	<b>4</b>	<b>6</b>		<b>1</b>	<b>4</b>	<b>5</b>		<b>5</b>	
Sport & Exercise Science	F	2		2	100.0	F	1		1	100.0	F	2	1	3	75.0
	M					M					M	1		1	25.0
<b>Total</b>		<b>2</b>		<b>2</b>		<b>1</b>		<b>1</b>		<b>3</b>	<b>1</b>	<b>4</b>		<b>4</b>	
<b>MANAGEMENT &amp; LANGUAGES</b>		<b>23</b>	<b>9</b>	<b>32</b>	<b>50.0</b>		<b>26</b>	<b>10</b>	<b>36</b>	<b>63.9</b>		<b>34</b>	<b>7</b>	<b>41</b>	<b>61.0</b>
Accountancy & Finance	F	2		2	40.0	F	1		1	20.0	F	1		1	16.7
	M	3		3	60.0	M	4		4	80.0	M	5		5	83.3
<b>Total</b>		<b>5</b>		<b>5</b>		<b>5</b>		<b>5</b>		<b>6</b>		<b>6</b>		<b>6</b>	
Economics	F	1		1	20.0	F	2	1	3	42.9	F	4		4	50.0
	M	4		4	80.0	M	4		4	57.1	M	4		4	50.0
<b>Total</b>		<b>5</b>		<b>5</b>		<b>6</b>	<b>1</b>	<b>7</b>		<b>8</b>		<b>8</b>		<b>8</b>	
Languages	F	6	3	9	75.0	F	6	4	10	83.3	F	7	2	9	90.0
	M	2	1	3	25.0	M	1	1	2	16.7	M	1		1	10.0
<b>Total</b>		<b>8</b>	<b>4</b>	<b>12</b>		<b>7</b>	<b>5</b>	<b>12</b>		<b>8</b>	<b>2</b>	<b>10</b>		<b>10</b>	
Management	F	2	2	4	40.0	F	6	3	9	75.0	F	9	2	11	64.7
	M	3	3	6	60.0	M	2	1	3	25.0	M	3	3	6	35.3
<b>Total</b>		<b>5</b>	<b>5</b>	<b>10</b>		<b>8</b>	<b>4</b>	<b>12</b>		<b>12</b>	<b>5</b>	<b>17</b>		<b>17</b>	
<b>MATHEMATICAL &amp; COMPUTER SCIENCES</b>		<b>53</b>	<b>8</b>	<b>61</b>	<b>32.8</b>		<b>61</b>	<b>12</b>	<b>73</b>	<b>24.7</b>		<b>57</b>	<b>12</b>	<b>69</b>	<b>27.5</b>
Actuarial Mathematics & Statistics	F	3		3	30.0	F	3		3	25.0	F	2		2	20.0
	M	7		7	70.0	M	8	1	9	75.0	M	6	2	8	80.0
<b>Total</b>		<b>10</b>	<b>0</b>	<b>10</b>		<b>11</b>	<b>1</b>	<b>12</b>		<b>8</b>	<b>2</b>	<b>10</b>		<b>10</b>	
Computer Science	F	5	4	9	26.5	F	5	4	9	19.1	F	3	5	8	19.5
	M	21	4	25	73.5	M	31	7	38	80.9	M	28	5	33	80.5
<b>Total</b>		<b>26</b>	<b>8</b>	<b>34</b>		<b>36</b>	<b>11</b>	<b>47</b>		<b>31</b>	<b>10</b>	<b>41</b>		<b>41</b>	
Mathematics	F	8		8	47.1	F	6		6	42.9	F	9		9	50.0
	M	9		9	52.9	M	8		8	57.1	M	9		9	50.0
<b>Total</b>		<b>17</b>		<b>17</b>		<b>14</b>		<b>14</b>		<b>18</b>		<b>18</b>		<b>18</b>	
<b>TEXTILES &amp; DESIGN</b>		<b>15</b>	<b>1</b>	<b>16</b>	<b>56.3</b>		<b>15</b>	<b>2</b>	<b>17</b>	<b>70.6</b>		<b>16</b>	<b>2</b>	<b>18</b>	<b>44.4</b>
Textiles & Design	F	8	1	9	56.3	F	10	2	12	70.6	F	7	1	8	44.4
	M	7		7	43.8	M	5		5	29.4	M	9	1	10	55.6
<b>PETROLEUM ENGINEERING</b>		<b>53</b>	<b>6</b>	<b>59</b>	<b>20.3</b>		<b>56</b>	<b>4</b>	<b>60</b>	<b>23.3</b>		<b>52</b>	<b>4</b>	<b>56</b>	<b>19.6</b>
Petroleum Engineering	F	11	1	12	20.3	F	14		14	23.3	F	11		11	19.6
	M	42	5	47	79.7	M	42	4	46	76.7	M	41	4	45	80.4

Percentage totals for Schools/Institutes relate to the female population  
 Note inclusions/exclusions detailed on page 5  
 School of the Built Environment programmes were reconfigured in 2008/09

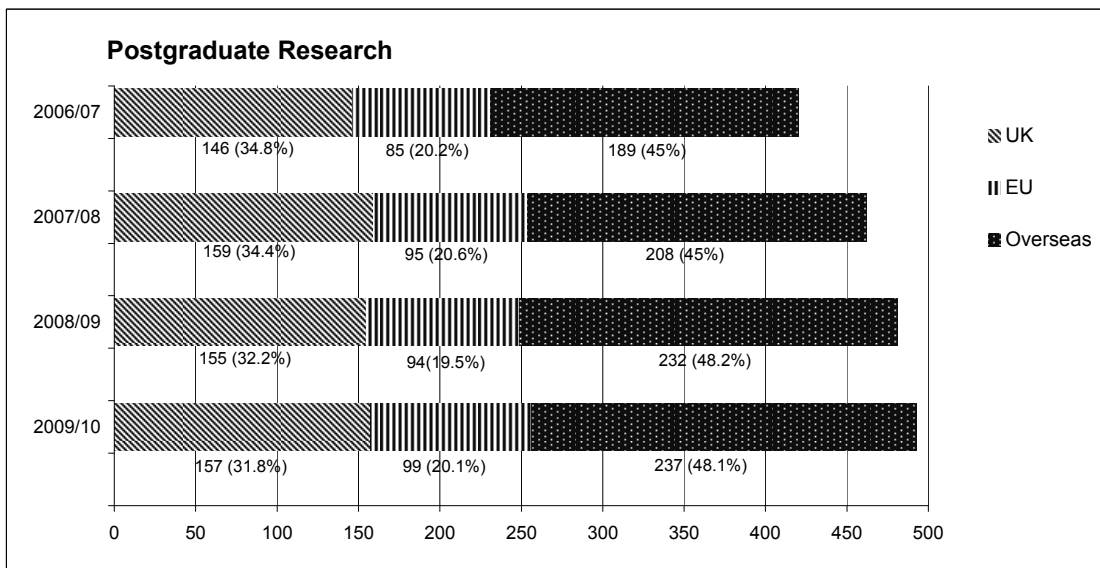
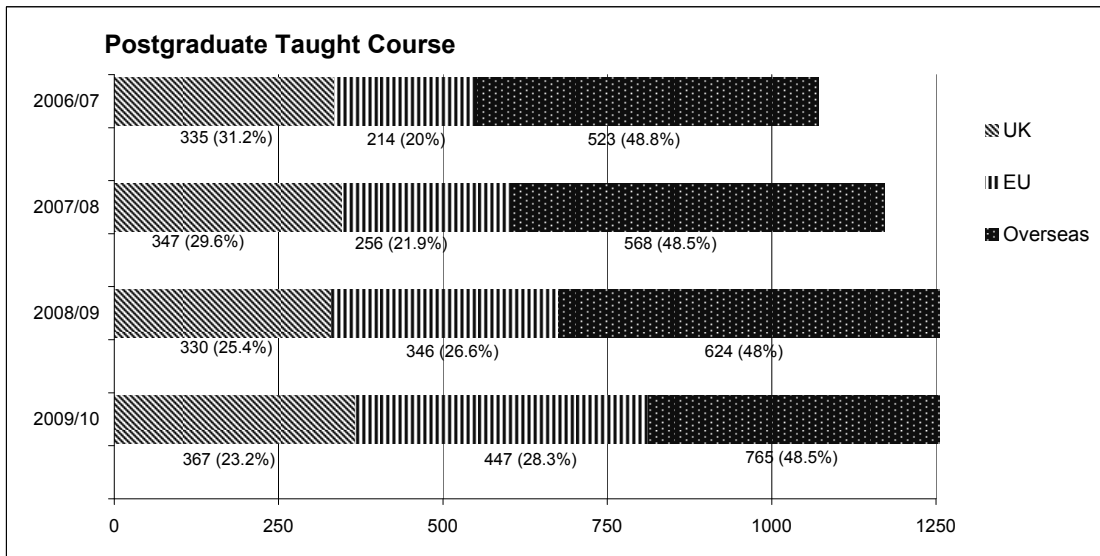
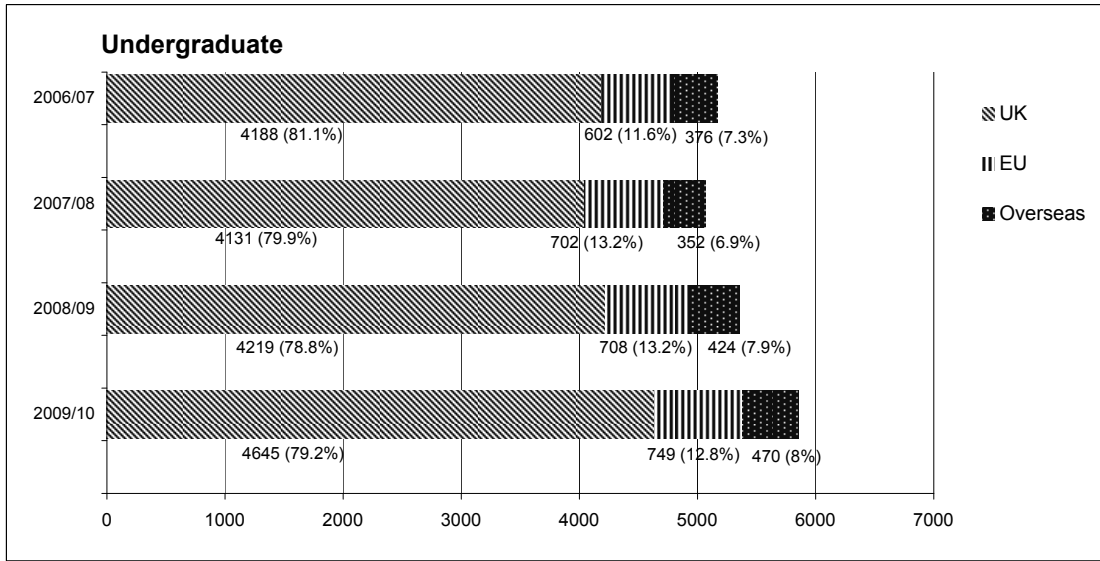
POSTGRADUATE RESEARCH STUDENTS BY SCHOOL/PGI/PROGRAMME AND FEE TYPE: 2007/08 - 2009/10

On-campus - Scotland

SCHOOL/Programme	2009/10						2008/09						2007/08																	
	UK		EU		OS		UK		EU		OS		UK		EU		OS													
	ft	pt	ft	pt	ft	pt	ft	pt	ft	pt	ft	pt	ft	pt	ft	pt	ft	pt												
<b>UNIVERSITY TOTAL</b>	135	22	157	80	19	99	218	19	237	483	126	29	155	77	17	94	214	18	232	481	124	35	159	80	15	95	183	15	208	462
<b>BUILT ENVIRONMENT</b>	15	5	20	5	2	7	36	8	44	71	8	7	15	3	2	5	34	6	40	60	7	7	14	4	4	28	7	35	53	
Civil Engineering	5	2	7	3	3	11	2	13	23	2	1	3	3	3	3	11	2	13	19	2	1	3	3	3	10	2	12	18		
Construction Management & Surveying	6	3	9	1	2	3	13	6	19	31	2	5	7	2	2	2	13	4	17	26	3	4	7	2	2	8	5	13	20	
Urban Studies	4	4	1	1	1	12	12	17	17	4	1	5	1	1	10	10	10	10	15	2	2	4	1	1	1	10	10	15		
<b>ENGINEERING &amp; PHYSICAL SCIENCES</b>	83	3	86	58	5	63	65	2	67	216	78	5	83	49	4	53	57	2	59	195	76	11	87	47	3	50	49	3	52	189
Chemical Engineering	3	3	5	5	10	10	18	18	18	4	1	5	7	7	7	6	6	6	18	3	1	4	7	7	7	3	3	14		
Chemistry	24	24	5	5	8	8	37	37	37	22	22	7	7	7	7	7	7	7	36	22	22	8	8	8	8	4	4	34		
Electrical, Electronic & Computer Engineering	10	1	11	17	1	18	16	16	45	12	12	13	2	15	14	14	14	14	41	11	6	17	15	2	17	21	2	23	57	
Mechanical Engineering	9	2	11	9	3	12	21	21	44	6	3	9	5	2	7	20	20	20	36	6	3	9	5	1	6	14	1	14	29	
Physics	37	37	22	1	23	10	2	12	72	34	1	35	17	17	10	2	12	64	34	1	35	12	12	7	1	8	55			
<b>LIFE SCIENCES</b>	7	4	11	2	3	5	18	4	22	38	9	2	11	5	4	9	16	4	20	40	12	5	17	3	4	7	12	12	36	
Biology	4	2	6	2	2	4	17	4	21	31	6	1	7	5	3	8	16	2	18	33	8	1	9	3	3	6	12	12	27	
Psychology	1	2	3	1	1	1	1	1	5	2	1	3	1	1	1	2	2	2	6	1	3	4	1	1	1	1	1	5		
Sport & Exercise Science	2	2	2	2	2	2	2	2	2	1	1	1	1	1	1	1	1	1	1	3	1	4	1	1	1	1	1	4		
<b>MANAGEMENT &amp; LANGUAGES</b>	5	4	9	4	4	8	14	1	15	32	7	6	13	6	2	8	13	2	15	36	7	2	9	7	4	11	20	1	21	41
Accountancy & Finance			2	2	3	3	5	5	5	1	1	2	2	2	2	2	2	2	5	1	1	2	2	2	3	3	3	6		
Economics	1	1	1	2	2	2	2	2	5	2	2	2	2	2	2	2	2	2	7	1	1	1	1	1	1	6	6	8		
Languages	2	3	5	1	1	6	6	6	12	1	4	5	1	1	2	5	5	5	12	1	1	2	1	1	3	6	6	10		
Management	2	1	3	3	3	3	1	4	10	3	2	5	1	1	2	4	1	5	12	5	1	6	2	3	5	5	1	6	17	
<b>MATHEMATICAL &amp; COMPUTER SCIENCES</b>	20	2	22	4	5	9	29	1	30	61	16	6	22	7	4	11	38	2	40	73	14	7	21	10	4	14	33	1	34	69
Actuarial Mathematics & Statistics	1	1	1	1	1	1	1	1	1	2	1	3	3	3	3	3	3	3	9	2	1	3	1	1	2	5	5	10		
Computer Science	11	2	13	2	5	7	13	1	14	34	9	5	14	4	4	8	23	2	25	47	6	6	12	4	3	7	21	1	22	41
Mathematics	8	8	2	2	2	7	7	7	17	5	5	5	3	3	3	6	6	6	14	6	6	6	5	5	5	7	7	18		
<b>TEXTILES &amp; DESIGN</b>	1	1	2	1	1	1	13	13	16	5	1	6	1	1	1	10	10	10	17	5	1	6	6	6	11	1	1	12	18	
<b>PETROLEUM ENGINEERING</b>	4	3	7	6	6	43	3	46	59	3	2	5	7	7	46	2	48	60	3	2	5	9	9	40	2	42	56			

Note inclusions/exclusions detailed on page 5  
School of the Built Environment programmes were reconfigured in 2008/09

**STUDENT POPULATION BY FEE TYPE: 2006/07 - 2009/10**  
**On-campus - Scotland**



**DUBAI CAMPUS STUDENTS: 2006/07 - 2009/10 (December census points)**

SCHOOL/Programme	2009/10							2008/09							2007/08							2006/07						
	UG		PG		Tot		Full Tot	UG		PG		Tot		Full Tot	UG		PG		Tot		Full Tot	UG		PG		Tot		Full Tot
	ft	pt	ft	pt	ft	pt		ft	pt	ft	pt	ft	pt		ft	pt	ft	pt	ft	pt		ft	pt	ft	pt	ft	pt	
<b>UNIVERSITY TOTAL</b>	675	36	711	175	442	617	1328	396	16	412	200	338	538	950	179	4	183	89	141	230	413	157	157	57	70	127	284	
<b>BUILT ENVIRONMENT</b>	22	35	57	54	257	311	368	21	16	37	35	250	285	322	10	3	13	16	100	116	129			2	51	53	53	
Civil Engineering	19		19				19																					
Construction Management & Surveying	3	35	38	52	243	295	333	21	16	37	34	241	275	312	10	3	13	16	100	116	129			2	51	53	53	
Urban Studies				2	14	16	16				1	9	10	10														
<b>ENGINEERING &amp; PHYSICAL SCI</b>	268		268	9	21	30	298	160		160	4	13	17	177	24		24		1	1	25	20		20				20
Chemical Engineering																			1	1	1							
Degree Entry Prog. In Engineering	77		77				77	41		41			41	14		14				14								
Electrical, Electronic & Computer Eng	61		61				61	30		30			30	10		10				10								
Mechanical Engineering	130		130	9	21	30	160	89		89	4	13	17	106	42		42				42	20		20			20	
<b>MANAGEMENT &amp; LANGUAGES</b>	362	1	363	51	65	116	479	215		215	20	64	84	299	145	1	146	14	25	39	185	137		137	21	12	33	170
Accountancy & Finance	89		89				89	53		53			53	57		57				57	42		42					
Management	273	1	274	51	65	116	390	162		162	20	64	84	246	88	1	89	14	25	39	128	95		95	21	12	33	128
<b>MATHEMATICAL &amp; COMPUTER SCI</b>				22	4	26	26				25	5	30	30				5	9	14	14				7	7	14	14
Computer Science				22	4	26	26				25	5	30	30				5	9	14	14				7	7	14	14
<b>TEXTILES</b>	23		23				23																					
<b>PETROLEUM ENGINEERING</b>				39		39	39				34	6	40	40				19	6	25	25				7	7	7	
<b>EBS (MBA)</b>				95	95	95					82	82	82				35	35	35				20	20	20			

The above numbers are excluded from student numbers reported on previous pages

**UNDERGRADUATE INCOMING EXCHANGE, NON-GRADUATING AND VISITING STUDENTS: 2007/08 - 2009/10**

SCHOOL/Programme	2009/10							2008/09							2007/08												
	UK		EU		OS		Full Tot	UK		EU		OS		Full Tot	UK		EU		OS		Full Tot						
	ft	pt	ft	pt	ft	pt		ft	pt	ft	pt	ft	pt		ft	pt	ft	pt	ft	pt							
<b>UNIVERSITY TOTAL</b>	1	2	3	128	1	129	16	1	17	149	1	1	104	7	111	15	15	127	1	1	109	14	123	30	3	33	157
<b>BUILT ENVIRONMENT</b>				9		9				9			4	4	6	6	10			10		10				10	
Civil Engineering				9		9				9			4	4	5	5	9			10		10				10	
Construction Management & Surveying															1	1	1										
Urban Studies																											
<b>ENGINEERING &amp; PHYSICAL SCI</b>	1	1	20	1	21		22			23	4	27		27			19		19						19		
Chemical Engineering			2		2		2																				
Chemistry			6		6		6			13	1	14		14			7		7						7		
Electrical, Electronic & Comp Eng			1		1		1			2		2		2			3		3						3		
Mechanical Engineering					10		10			5	1	6		6			5		5						5		
Physics		1	1	1	1		2									4		4							4		
Combined Studies (BSc/BEng)					1	1	1			3	2	5		5													
<b>LIFE SCIENCES</b>																1		1							1		
Biology																1		1							1		
Marine Sci & Environmental Man																											
<b>MANAGEMENT &amp; LANGUAGES</b>	1	1	2	96	96	13	1	14	112	1	1	76	3	79	9	9	89	1	1	71	14	85	26	3	29	115	
Accountancy & Finance																2		2							2		
Economics										3	1	4		4													
Languages		1	1	86	86	6	6	93	1	1	54	1	55	2	2	58	1	1	56	13	69	21	2	23	93		
Management				10	10	7	1	8	18			19	1	20	7	7	27			13	1	14	5	1	6	20	
Management (SBC)	1		1				1																				
<b>MATHEMATICAL &amp; COMP SCI</b>			2		2	3	3	5			1	1	2	2	2	4			5		5	4			4	9	
Actuarial Mathematics & Statistics					3		3	3					2	2	2			1		1	2			2	3		
Computer Science			1		1		1			1	1			1			1		1	1				1	2		
Mathematics			1		1		1			1	1			1			3		3	1				1	4		
<b>TEXTILES &amp; DESIGN</b>			1		1		1			4	4	2		2	6			3		3					3		

The above numbers are excluded from student numbers reported on previous pages

**NEW AND RENEWED EXCHANGE AGREEMENTS BY COUNTRY: 2009/10**

COUNTRY	No	COUNTRY	No
Australia	4	Netherlands	1
Austria	3	New Zealand	1
Belgium	8	Poland	2
Canada	3	Portugal	2
Czech Republic	1	Romania	2
France	27	Slovenia	1
Germany	17	Spain	16
Greece	1	Sweden	5
Italy	7	Switzerland	5
Lithuania	1	USA	5
Mexico	1	<b>Total</b>	<b>113</b>

**APPROVED LEARNING PARTNERS: AT JANUARY 2010**

COUNTRY	No	COUNTRY	No
Bahrain	1	Malta	1
Bangladesh	1	Mauritius	1
China	2	Norway	1
Costa Rica	1	Russia	1
Cyprus	2	Saudi Arabia	1
Denmark	1	Serbia & Montenegro	1
Egypt	2	Singapore	3
Greece	4	Slovenia	1
Hong Kong	5	St Kitts and Nevis	1
Indonesia	1	Sweden	1
Ireland	1	Switzerland	1
Israel	1	Trinidad & Tobago	3
Jamaica	1	Uganda	1
Kazakhstan	1	Ukraine	1
Libya	1	United Kingdom	5
Malaysia	3	USA	1
		<b>Total</b>	<b>52</b>

**NON-UK DOMICILED STUDENTS (UG, PGT, PGR) BY COUNTRY: 2004/05 - 2009/10**  
**Studying on-campus in Scotland**

CONTINENT/COUNTRY	2009/10	%	2008/09	%	2007/08	%	2006/07	%	2005/06	%	2004/05	%
<b>UNIVERSITY TOTAL</b>	<b>2,697</b>	<b>100</b>	<b>2,302</b>	<b>100</b>	<b>2,085</b>	<b>100</b>	<b>1,900</b>	<b>83</b>	<b>1,765</b>	<b>85</b>	<b>1,757</b>	<b>100</b>
<b>EUROPE</b>	<b>1410</b>	<b>52.3</b>	<b>1215</b>	<b>52.8</b>	<b>1111</b>	<b>53.3</b>	<b>945</b>	<b>49.7</b>	<b>779</b>	<b>44.1</b>	<b>816</b>	<b>46.4</b>
ALBANIA	3	0.2	3	0.2	3	0.2	1	0.0				
ARMENIA	1											
AUSTRIA	5	0.3	7	0.4	10	0.6	12	0.5	10	0.5	12	0.7
BELARUS					3	0.2	3	0.1	2	0.1		
BELGIUM	14	0.8	13	0.7	13	0.7	8	0.3	8	0.4	8	0.5
BOSNIA & HERZEGOVINA	1	0.1	3	0.2			1	0.0	2	0.1		
BULGARIA	12	0.7	5	0.3	5	0.3	4	0.2	2	0.1	1	0.1
CROATIA					1	0.1	2	0.1	2	0.1	1	0.1
CYPRUS	17	1.0	19	1.1	12	0.7	12	0.5	10	0.5	8	0.5
CZECH REPUBLIC	5	0.3	5	0.3	4	0.2	7	0.3	3	0.1	2	0.1
DENMARK	8	0.5	6	0.3	5	0.3	6	0.3	4	0.2	5	0.3
ESTONIA			1	0.1	1	0.1	2	0.1	1	0.0		
FINLAND	11	0.6	6	0.3	4	0.2	2	0.1	3	0.1	4	0.2
FRANCE *	<u>412</u>	<u>23.4</u>	<u>353</u>	<u>20.1</u>	<u>334</u>	<u>19.0</u>	<u>310</u>	<u>13.5</u>	<u>234</u>	<u>11.2</u>	<u>230</u>	<u>13.0</u>
GERMANY	<u>140</u>	<u>8.0</u>	<u>127</u>	<u>7.2</u>	<u>131</u>	<u>7.5</u>	<u>120</u>	<u>5.2</u>	<u>80</u>	<u>3.8</u>	<u>72</u>	<u>4.1</u>
GREECE	<u>294</u>	<u>16.7</u>	<u>262</u>	<u>14.9</u>	<u>173</u>	<u>9.8</u>	<u>111</u>	<u>4.8</u>	<u>121</u>	<u>5.8</u>	<u>155</u>	<u>8.8</u>
GREENLAND & FAROE ISLANDS	3	0.2	2	0.1	2	0.1	1	0.0				
HUNGARY	4	0.2	2	0.1	2	0.1	1	0.0				
ICELAND	1	0.1					6	0.3	4	0.2	2	0.1
IRISH REPUBLIC	<u>153</u>	<u>8.7</u>	<u>129</u>	<u>7.3</u>	<u>147</u>	<u>8.4</u>	<u>120</u>	<u>5.2</u>	<u>110</u>	<u>5.3</u>	<u>125</u>	<u>7.1</u>
ITALY	32	1.8	26	1.5	27	1.5	24	1.0	11	0.5	11	0.6
KOSOVO	2	0.1	1	0.1								
LATVIA	9	0.5	8	0.5	4	0.2	4	0.2	1	0.0	1	0.1
LITHUANIA	9	0.5	6	0.3	3	0.2	3	0.1	2	0.1	1	0.1
LUXEMBOURG	8	0.5	6	0.3	5	0.3	3	0.1	1	0.0	1	0.1
MACEDONIA											1	0.1
MALTA	3	0.2	3	0.2	3	0.2	2	0.1	2	0.1	1	0.1
MOLDOVA	1	0.1	1	0.1	1	0.1	2	0.1	1	0.0		
NETHERLANDS	6	0.3	8	0.5	7	0.4	6	0.3	10	0.5	14	0.8
NORWAY	61	3.5	54	3.1	<u>49</u>	<u>2.8</u>	<u>42</u>	<u>1.8</u>	<u>50</u>	<u>2.4</u>	<u>77</u>	<u>4.4</u>
POLAND	71	4.0	<u>67</u>	<u>3.8</u>	<u>64</u>	<u>3.6</u>	<u>48</u>	<u>2.1</u>	<u>29</u>	<u>1.4</u>	<u>12</u>	<u>0.7</u>
PORTUGAL	13	0.7	8	0.5	10	0.6	12	0.5	7	0.3	5	0.3
ROMANIA	6	0.3	5	0.3	3	0.2	2	0.1	2	0.1	2	0.1
RUSSIA	17	1.0	13	0.7	12	0.7	7	0.3	3	0.1	6	0.3
SERBIA	4	0.2	4	0.2	2	0.1						
SLOVAKIA	3	0.2	2	0.1	2	0.1	1	0.0	1	0.0	1	0.1
SLOVENIA									1	0.0		
SPAIN	40	2.3	31	1.8	42	2.4	36	1.6	43	2.1	<u>35</u>	<u>2.0</u>
SWEDEN	24	1.4	15	0.9	14	0.8	15	0.7	8	0.4	12	0.7
SWITZERLAND	11	0.6	5	0.3	2	0.1	2	0.1	3	0.1	2	0.1
TURKEY	5	0.3	5	0.3	6	0.3	3	0.1	4	0.2	4	0.2
UKRAINE	1	0.1	3	0.2	5	0.3	4	0.2	4	0.2	5	0.3
<b>AMERICAS</b>	<b>73</b>	<b>2.7</b>	<b>100</b>	<b>4.3</b>	<b>87</b>	<b>4.2</b>	<b>74</b>	<b>3.9</b>	<b>73</b>	<b>4.1</b>	<b>83</b>	<b>4.7</b>
ARGENTINA	1	0.1	1	0.1	2	0.1					1	0.1
BAHAMAS	1	0.1	1	0.1							1	0.1
BARBADOS			3	0.2	3	0.2	6	0.3	9	0.4	10	0.6
BELIZE					1	0.1						
BOLIVIA			1	0.1							1	0.1
BRAZIL	3	0.2	8	0.5	4	0.2	3	0.1	1	0.0	2	0.1
CANADA	8	0.5	9	0.5	18	1.0	6	0.3	12	0.6	11	0.6
CHILE											1	0.1
COLOMBIA	3	0.2	7	0.4	8	0.5	7	0.3	5	0.2	5	0.3
COSTA RICA	1	0.1	1	0.1	1	0.1	1	0.0			2	0.1
DOMINICAN REPUBLIC												
ECUADOR	3	0.2	2	0.1			1	0.0				
EL SALVADOR	1	0.1	1	0.1								
GUYANA			1	0.1	1	0.1	2	0.1			1	0.1
HONDURAS	1	0.1										
JAMAICA			1	0.1					1	0.0		
MEXICO	14	0.8	23	1.3	11	0.6	12	0.5	7	0.3	12	0.7
PANAMA											2	0.1
PERU	1						1	0.0				
ST. LUCIA											1	0.1
TOGO	2	0.1										
TRINIDAD & TOBAGO	3	0.2	6	0.3	10	0.6	4	0.2	5	0.2	3	0.2
URUGUAY							1	0.0			1	0.1
U.S.A.	28	1.6	29	1.7	23	1.3	24	1.0	28	1.3	20	1.1
VENEZUELA	3	0.2	6	0.3	5	0.3	6	0.3	5	0.2	9	0.5
<b>AUSTRALASIA</b>	<b>5</b>	<b>0.2</b>	<b>7</b>	<b>0.3</b>	<b>7</b>	<b>0.3</b>	<b>4</b>	<b>0.2</b>	<b>7</b>	<b>0.4</b>	<b>6</b>	<b>0.3</b>
AUSTRALIA	2	0.1	4	0.2	4	0.2	1	0.0	1	0.0	3	0.2
NEW ZEALAND	3	0.2	3	0.2	2	0.1	3	0.1	4	0.2	2	0.1
PAPUA NEW GUINEA					1	0.1			2	0.1	1	0.1
<b>ASIA</b>	<b>941</b>	<b>34.9</b>	<b>761</b>	<b>33.1</b>	<b>699</b>	<b>33.5</b>	<b>702</b>	<b>36.9</b>	<b>753</b>	<b>42.7</b>	<b>706</b>	<b>40.2</b>
AFGHANISTAN	1	0.1	1	0.1					1	0.0		
AZERBAIJAN	2	0.1	1	0.1	2	0.1						
BAHRAIN	4	0.2	5	0.3	7	0.4	7	0.3	3	0.1	1	0.1
BANGLADESH	10	0.6	7	0.4	8	0.5	8	0.3	11	0.5	13	0.7
BRUNEI DARUSSALAM	4	0.2	3	0.2	2	0.1	1	0.0	2	0.1	1	0.1
CHINA REPUBLIC INCL HK	<u>294</u>	<u>16.7</u>	<u>241</u>	<u>13.7</u>	<u>238</u>	<u>13.5</u>	<u>287</u>	<u>12.5</u>	<u>349</u>	<u>16.7</u>	<u>346</u>	<u>19.6</u>
INDIA	<u>155</u>	<u>8.8</u>	<u>113</u>	<u>6.4</u>	<u>129</u>	<u>7.3</u>	<u>111</u>	<u>4.8</u>	<u>108</u>	<u>5.2</u>	<u>99</u>	<u>5.6</u>
INDONESIA	7	0.4	8	0.5	1	0.1	1	0.0			4	0.2
IRAN ISLAMIC REP	34	1.9	36	2.0	17	1.0	23	1.0	11	0.5	8	0.5
IRAQ	5	0.3	2	0.1			1	0.0			1	0.1
ISRAEL	2	0.1	2	0.1	1	0.1			1	0.0		
JAPAN	3	0.2	2	0.1	3	0.2	3	0.1	6	0.3	5	0.3
JORDAN	9	0.5	6	0.3	7	0.4	2	0.1	7	0.3	3	0.2
KAZAKHSTAN	29	1.7	16	0.9	13	0.7	6	0.3	3	0.1	2	0.1



CONTINENT/COUNTRY	2009/10	%	2008/09	%	2007/08	%	2006/07	%	2005/06	%	2004/05	%
KOREA REPUBLIC					4	0.2						
KUWAIT	7	0.4	9	0.5	10	0.6	1	0.0	4	0.2	4	0.2
KYRGYZTAN	1	0.1	1	0.1	1	0.1						
LEBANON	3	0.2	3	0.2	3	0.2	4	0.2	3	0.1	4	0.2
MALAYSIA	90	5.1	79	4.5	65	3.7	64	2.8	66	3.2	63	3.6
MALDIVES	1	0.1	1	0.1								
MONGOLIA (OUTER)			1	0.1								
MYANMAR							1	0.0				
NEPAL	2	0.1	2	0.1	3	0.2	2	0.1	1	0.0		
OMAN	16	0.9	20	1.1	17	1.0	14	0.6	14	0.7	17	1.0
PAKISTAN	25	1.4	34	1.9	33	1.9	42	1.8	45	2.2	26	1.5
PHILIPPINES	3	0.2	3	0.2	1	0.1	2	0.1	3	0.1	1	0.1
EAST TIMOR	1	0.1	2	0.1								
QATAR	2	0.1			4	0.2	2	0.1	1	0.0		
SAUDI ARABIA	127	7.2	62	3.5	39	2.2	25	1.1	35	1.7	32	1.8
SINGAPORE	3	0.2	5	0.3	5	0.3	3	0.1	9	0.4	10	0.6
SOUTH KOREA	6	0.3	5	0.3	5	0.3	2	0.1	4	0.2	4	0.2
SRI LANKA	3	0.2	4	0.2	4	0.2	3	0.1	3	0.1	5	0.3
SYRIAN ARAB REPUBLIC	32	1.8	26	1.5	39	2.2	34	1.5	21	1.0	24	1.4
TAIWAN	8	0.5	11	0.6	16	0.9	20	0.9	23	1.1	19	1.1
THAILAND	20	1.1	23	1.3	12	0.7	10	0.4	4	0.2	5	0.3
TURKMENISTAN	1	0.1				0.0			1	0.0		
UNITED ARAB EMIRATES	21	1.2	15	0.9	10	0.6	8	0.3	7	0.3	5	0.3
UZBEKISTAN			1	0.0			1	0.0				
VIETNAM - NORTH	5	0.3		0.0			2	0.1	2	0.1		
VIETNAM SOC REPUBLIC	4	0.2	11	0.6	5	0.3	11	0.5	4	0.2	2	0.1
YEMEN ARAB REPUBLIC	1	0.1					1	0.0	1	0.0	2	0.1
<b>AFRICA</b>	<b>267</b>	<b>9.9</b>	<b>218</b>	<b>9.5</b>	<b>180</b>	<b>8.6</b>	<b>173</b>	<b>9.1</b>	<b>152</b>	<b>8.6</b>	<b>143</b>	<b>8.1</b>
ALGERIA					1	0.1	3	0.1	4	0.2	1	0.1
ANGOLA	2	0.1	1	0.1	1	0.1	2	0.1	3	0.1	1	0.1
BOTSWANA	1	0.1	2	0.1	1	0.1	3	0.1	3	0.1	6	0.3
CAMEROON REPUBLIC	2	0.1	3	0.2	1	0.0	2	0.1			1	0.1
CONGO (DEM REPUBLIC)				0.0								
EGYPT	10	0.6	8	0.5	9	0.5	4	0.2	5	0.2	2	0.1
ETHIOPIA	3	0.2	3	0.2	3	0.1	1	0.0				
GABON			1	0.1			1	0.0				
GAMBIA	2	0.1	2	0.1	2	0.1	1	0.0				
GHANA	20	1.1	19	1.1	23	1.3	17	0.7	23	1.1	20	1.1
IVORY COAST	1	0.1	1	0.1	2	0.1	1	0.0				
KENYA	8	0.5	5	0.3	5	0.3	1	0.0	7	0.3	3	0.2
LIBYAN ARAB REPUBLIC	79	4.5	39	2.2	18	1.0	29	1.3	15	0.7	15	0.8
MALAWI	4	0.2	1	0.1	2	0.1	1	0.0	1	0.0	1	0.1
MAURETANIA					1	0.0						
MAURITIUS			1	0.1	2	0.1	3	0.1	3	0.1	2	0.1
MOROCCO					2	0.1	1	0.0	2	0.1	3	0.2
MOZAMBIQUE									1	0.0		
NAMIBIA							1	0.0	1	0.0	2	0.1
NIGER	1	0.1										
NIGERIA	106	6.0	94	5.4	92	5.2	77	3.3	51	2.4	52	2.9
RWANDA			2	0.1	1	0.0	1	0.0	2	0.1		
SEYCHELLES					1	0.0	1	0.0	1	0.0		
SIERRA LEONE											1	0.1
SOUTH AFRICA	6	0.3	5	0.3	4	0.2	5	0.2	8	0.4	9	0.5
SOMALI DEM REPUBLIC	1	0.1									1	0.1
SUDAN	5	0.3	8	0.5	3	0.2	6	0.3	6	0.3	4	0.2
SWAZILAND											1	0.1
TANZANIA	1	0.1	6	0.3	1	0.1	3	0.1	2	0.1	1	0.1
TOGO	2	0.1	2	0.1								
TUNISIA	2	0.1	3	0.2					2	0.1	2	0.1
UGANDA	4	0.2	3	0.2	3	0.2	1	0.0	1	0.0	2	0.1
ZAMBIA	5	0.3	6	0.3			3	0.1			3	0.2
ZIMBABWE	2	0.1	3	0.2	2	0.1	5	0.2	11	0.5	10	0.6
<b>OTHER</b>	<b>1</b>	<b>0.1</b>	<b>1</b>	<b>0.1</b>	<b>1</b>	<b>0.1</b>	<b>2</b>	<b>0.1</b>	<b>1</b>	<b>0.0</b>	<b>3</b>	<b>0.2</b>
COUNTRY NOT KNOWN	1	0.1	1	0.1	1	0.1	2	0.1	1	0.0	3	0.2

Percentages are expressed as a proportion of the non-UK total

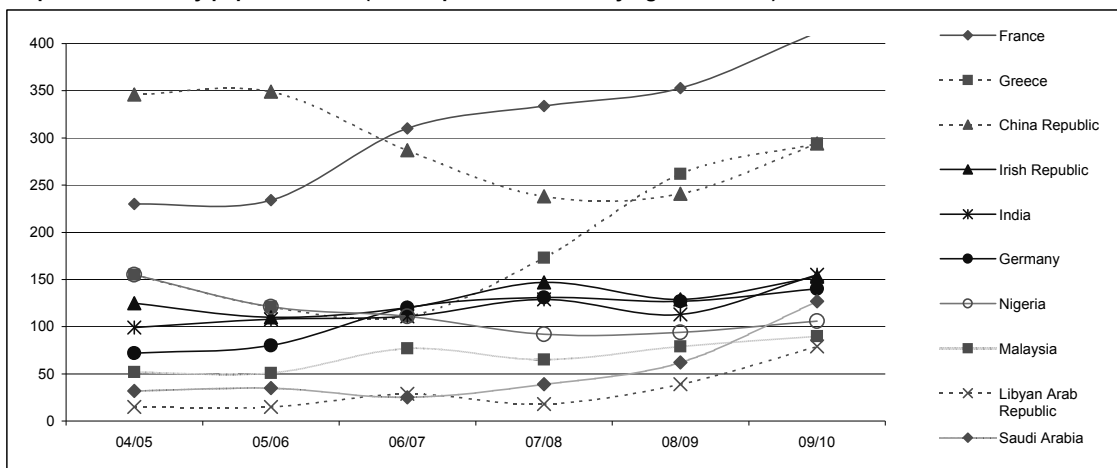
Top 10 domiciles by population size are highlighted in each year

UK dependent countries are not included

Inclusions/exclusions detailed on page 5 apply. Note that total non-UK numbers in this report will not match exactly those indicated on page 5 which assigns students to 'other EU' and 'overseas' categories on the basis of the "fees status" assigned to the student.

\*Including any French dependencies.

#### Top 10 domiciles by population size (on-campus students studying in Scotland): trends 2004/05 - 2009/10



ALL ON-CAMPUS STUDENTS (Scotland and Dubai) BY STUDY LEVEL AND DOMICILE: 2009/10

	SBE			EPS			SLS			SML			IMACS			TEX			IPE			EBS			DUBAI			FULL TOTAL								
	UG	PGT	TOT	UG	PGT	TOT	UG	PGT	TOT	UG	PGT	TOT	UG	PGT	TOT	UG	PGT	TOT	UG	PGT	TOT	UG	PGT	TOT	UG	PGT	TOT		UG	PGT	TOT					
	788	297	71	1156	1485	378	216	2079	584	79	38	801	1538	318	32	1888	844	223	61	1128	525	22	16	563	201	59	260		61	711	617	1328	9264			
1 UK	657	145	21	823	1105	46	96	1247	591	30	11	632	1086	67	10	1163	670	40	24	734	506	7	2	515	47	10	57	20	6	3	9	5200				
2 United Arab Emirates	3		2	5	2		2						10	1		11																				
3 India	7	3	10	3	26	8	37		8	2	10	7	15		22		3	28	2	33		5	1	6	13	1	1	2	294	219	513	534				
4 France	17	4	1	22	174	14	8	196	50	5	55	99	5	104		22	5	27	1	27		1	1	7	1	8		193	149	342	497					
5 China Rep Incl HK	9	29	2	40	18	17	22	57	4	2	6	49	43	5	97	44	37	3	84		3	1	1	4	3	7	1						303			
6 Greece	21	5	1	27	22	174	5	201	8	1	9	19	11	2	32	12	7	1	20		3	1	4	2	2								295			
7 Nigeria	2	6	1	9	10	10	1	21																										181		
8 Kingdom of Saudi Arabia	3	16	2	21	13	10	2	25	11	4	15	45	12		57	2	32	1	35		3													170		
9 Irish Republic	38	36	1	75	7	15	2	24	5	1	7	10	12		22	9	8	17	4	1		1	5	6	3									154		
10 Pakistan	1				4	6		10	2	4		2	4		6			1	1				1	5	6	1								150		
11 Germany	1	4	1	39	8	3	12	63	3		3	27	29	2	58	2	5	2	9		2	3	5	1	2	3	5	1					141			
12 Malaysia	1	13	2	16	1	13	6	20		4	4	7	3		10	16	2	18		1		1												93		
13 Libyan Arab Republic	5	1	1	7	11			5	3	2	5	28	6	1	35	8		8																72		
14 Poland	1	1	1	1	1	1	1	5				1	2		1	3		4																62		
15 Iran Islamic Rep	4	1		5	3	1		4	2		2	43	7		50																			61		
16 Norway	1	1		2	3	5	5	13	1	1	2	3	10		13	3	3	6		1														40		
17 Spain	1	4	9	13				7				1	6	7																					40	
18 Syrian Arab Republic	1	1	1	3	6	1		6				3	2		5		1	2	3		1	4	5	1	3									40		
19 Kazakhstan	1	1	1	3	5			6				3	2		5		1																		38	
20 Italy	1	1	1	3	5			4				1	6		17																				32	
21 USA	1	2	1	3	2	3	4	9	5	5	10	1	1	2		1		1	2		1													30		
22 Egypt	1				2	1	1	4				1	1		2																				29	
23 Sri Lanka	1			1				1				1	1		1																				26	
24 Oman	4	2	2	8	1			1				1			1																				25	
25 Sweden					3	1	1	5	3			13			13																				25	
26 Bangladesh					4	4		1				3	13		3																				24	
27 Russia					1			2	3			4	4		8																				24	
28 Ghana	5	2	7	1	1	2	1	3				1			1																				22	
29 Thailand	1	1	1	1	1	1	1	2				10			2																				20	
30 Canada	1	1	2	1	1	1	1	2				1	10		10																				18	
31 Jordan	1	2	3	1				1				4			1																				18	
32 Cyprus	1				3	1		4				2	2	1	5	4	3		7																17	
33 Belgium	1				1	4		6	1			4			4		1		1																14	
34 Lebanon															2																					14
35 Mexico															6																					14
36 Portugal	1	1	2	4				2	3	5		1	5	6		2		2																	14	
37 Iraq	1	1	1	1	2	4		6				1	1	1	3																				14	
38 Bulgaria	1				1	2	1	3	1	1	2	6			1																				13	
39 Lithuania	3				2	2		2				1			6																				12	
40 Sudan					3	2		2				1			1																				12	
41 Australia	1																																		11	
42 Finland																																				11
43 Kuwait	1	2	3						2			7	1		7	1																			11	
44 South Africa					1			2				1			1																				11	
45 Switzerland	1				3			3				4	1		5																				11	
46 Kenya					1			1	1			1	1		2	1	4		5																10	
47 Turkey	2																																		10	
48 Latvia	1				2	1		3				3			3																				9	
49 Taiwan					1			1				1			1																				9	
50 Denmark					1	1		1				1	1		3																				8	
51 Luxembourg	1				1	1		2				2	1		2	1																			8	
52 Indonesia					1	1		1				5	1		6																				7	
53 Philippines					2	2		2				1	1		2																				7	
54 Qatar								1				1			1																				7	
55 South Korea					2			2																											7	
56 Bahrain					1			1				1			3																				7	
57 Israel	1				1	1		1				1			1																				6	
58 Netherlands					1	1		1				1			1																				6	

	SBE			EPS			SLS			SML			MACS			TEX			IPE			EBS			DUBAI			FULL TOTAL
	UG	PGR	TOT	UG	PGR	TOT	UG	PGR	TOT	UG	PGR	TOT	UG	PGR	TOT	UG	PGR	TOT	UG	PGR	TOT	UG	PGR	TOT	UG	PGR	TOT	
59	Romania																											6
60	Austria																											5
61	Azerbaijan																											5
62	Czech Republic																											5
63	Serbia																											5
64	Singapore																											5
65	Uganda																											5
66	Vietnam - North																											5
67	Zambia																											5
68	Brazil																											4
69	Brunei																											4
70	Ethiopia																											4
71	Hungary																											4
72	Japan																											4
73	Malawi																											4
74	New Zealand																											4
75	Trinidad & Tobago																											4
76	Vietnam Soc Republic																											4
77	Afghanistan																											4
78	Albania																											3
79	Cameroon Republic																											3
80	Colombia																											3
81	Ecuador																											3
82	Greenland & Faroe Islands																											3
83	Malta																											3
84	Slovakia																											3
85	Tanzania																											3
86	Tunisia																											3
87	Ukraine																											3
88	Venezuela																											3
89	Algeria																											2
90	Angola																											2
91	Gambia																											2
92	Kosovo																											2
93	Kyrgyzstan																											2
94	Nepal																											2
95	Somali Dem Republic																											2
96	Togo																											2
97	Uzbekistan																											2
98	Yemen Arab Republic																											2
99	Zimbabwe																											2
100	Argentina																											1
101	Armenia																											1
102	Bahamas																											1
103	Bosnia & Herzegovina																											1
104	Botswana																											1
105	Costa Rica																											1
106	East Timor																											1
107	El Salvador																											1
108	Honduras																											1
109	Iceland																											1
110	Ivory Coast																											1
111	Maldives																											1
112	Mauritius																											1
113	Moldova																											1
114	Morocco																											1
115	Niger																											1
116	Peru																											1
117	Puerto Rico																											1
118	Turkmenistan																											1
	Unknown																											1

ALL TRANSNATIONAL PROGRAMME STUDENTS BY MODE OF STUDY AND DOMICILE ACTIVE IN THE HESA REPORTING YEAR 2008/09

	SBE			EPS			SLS			IMACS			TEX			IPE			EBS			FULL TOT.			
	ALP	IDL	TOT	ALP	IDL	TOT	ALP	IDL	TOT	ALP	IDL	TOT	ALP	IDL	TOT	ALP	IDL	TOT	ALP	IDL	TOT				
	2013	489	2502	216	44	260	77	77	77	107	5	112	4	4	4	125	691	816	3234	1554	4788		7526	2997	10523
University Total	2013	489	2502	216	44	260	77	77	77	107	5	112	4	4	4	125	691	816	3234	1554	4788	7526	2997	10523	
1 UK	12	256	268	17	17	1	21	21	21	5	5	5				22	141	141	461	269	730	936	718	1654	
2 China - Rep incl HK	527	4	531	1	1	1										17	39	39	124	72	196	1351	95	1446	
3 Trinidad & Tobago	76	19	95													8	8	8	943	7	950	1374	36	1410	
4 Singapore	799	1	1	1	1	1	1	1	1	2	2	2				13	37	50	478	56	56	910	10	920	
5 Malaysia	525	1	526	2	2	2										29	29	29	478	5	483	478	35	513	
6 Egypt	1	1	1																437	2	439	437	2	439	
7 Israel	69	2	71	216		216	3	3	3										14	13	27	385	19	404	
8 Greece	3	3	3	3	3	3	9	9	9										221	221	221	250	250	250	
9 Canada	1	1	1				23	23	23										54	140	194	54	186	240	
10 USA	1	1	1							103	103	103							4	57	57	121	68	189	
11 Iran Islamic Rep	5	5	5																1	154	3	157	154	9	163
12 Uganda	1	1	1				1	1	1										70	76	146	70	86	156	
13 Russia	4	4	4																						
14 Jamaica	1	1	1																						
15 Zambia	2	2	2																						
16 South Africa	4	4	4			1																			
17 United Arab Emirates	5	5	5	1	1	1	1	1	1																
18 Nigeria	17	17	17	3	3	3																			
19 Switzerland	1	1	1																						
20 Ireland - Republic	44	44	44	2	2	2	1	1	1																
21 India	18	18	18				1	1	1																
22 Mauritius	3	3	3																						
23 Germany	7	7	7	1	1	1	1	1	1																
24 Norway	2	2	2																						
25 Serbia	5	5	5																						
26 Sweden	1	1	1																						
27 Malta	2	2	2	1	1	1	2	2	2																
28 Azerbaijan	2	2	2																						
29 Australia	3	3	3																						
30 Indonesia	2	2	2	1	1	1	1	1	1																
31 Kazakhstan	2	2	2																						
32 Kenya	3	3	3																						
33 Ghana	10	10	10	4	4	4	1	1	1																
34 Kingdom of Saudi Arabia	3	3	3	1	1	1																			
35 Colombia	2	2	2																						
36 Denmark	2	2	2																						
37 Japan	4	4	4																						
38 Oman	4	4	4																						
39 Qatar	3	3	3	1	1	1	1	1	1																
40 Netherlands	3	3	3	1	1	1																			
41 Barbados	5	2	7							2	2	2													
42 Pakistan	2	2	2																						
43 Cyprus	2	2	2																						
44 Spain	2	2	2	2	2	2	1	1	1																
45 Italy	2	2	2																						
46 Libyan Arab Republic	2	2	2																						
47 Vietnam Soc Republic	4	4	4																						
48 France	3	3	3																						
49 Thailand	4	4	4																						
50 Zimbabwe	3	3	3																						
51 Angola	2	2	2																						
52 Brazil	1	1	1																						
53 Brunei	6	6	6																						
54 Kuwait	1	1	1																						
55 Lebanon	6	6	6																						
56 Mexico	2	2	2																						
57 Portugal	3	3	3																						
58 Sri Lanka	1	1	1																						
59 Sudan	2	2	2																						
60 Syrian Arab Republic	3	3	3																						
61 Argentina	1	1	1																						
62 Austria	1	1	1																						
63 Bangladesh	2	2	2																						
64 Poland	1	1	1																						
65 Taiwan	1	1	1																						

	SBE			EPS			SLS			MACS			SML			TEX			IPE			EBS			ALP TOT.	IDL TOT.	FULL TOT.
	ALP	IDL	TOT	ALP	IDL	TOT	ALP	IDL	TOT	ALP	IDL	TOT	ALP	IDL	TOT	ALP	IDL	TOT	ALP	IDL	TOT	ALP	IDL	TOT			
66 Turkey																											
67 Guyana		2	2																								
68 Mozambique																											
69 Tanzania		1	1																								
70 Bahrain		3	3																								
71 Cayman Islands																											
72 Philippines		2	2				3	3																			
73 Algeria																											
74 Croatia																											
75 New Zealand		1	1																								
76 Luxembourg		1	1																								
77 Namibia																											
78 Belgium																											
79 Bulgaria		2	2																								
80 Carneroon Republic																											
81 Ethiopia																											
82 Iceland																											
83 Malawi																											
84 Romania		1	1																								
85 South Korea																											
86 St. Kitts & Nevis																											
87 St. Lucia																											
88 Venezuela																											
89 Yemen Arab Republic																											
90 Bolivia																											
91 Botswana		1	1																								
92 Czech Republic																											
93 Dominican Republic																											
94 Ecuador																											
95 Jordan																											
96 Rwanda																											
97 Albania		1	1																								
98 Antigua & Barbuda																											
99 Bahamas																											
100 Burkina Faso																											
101 Chad																											
102 Chile																											
103 Costa Rica																											
104 Estonia																											
105 Finland																											
106 Gabon																											
107 Haiti																											
108 Hungary																											
109 Iraq		1	1																								
110 Mongolia																											
111 Montserrat																											
112 Morocco																											
113 Palestinian Authority		1	1																								
114 Papua New Guinea																											
115 Peru																											
116 Sierra Leone																											
117 Slovakia																											
118 Slovenia																											
119 St. Vincent																											
120 Swaziland		1	1																								
121 Tunisia																											
122 Ukraine																											

Notes:  
ALP = Study with an Approved Learning Partner  
IDL = Study by independent distance learning  
Student numbers include students registered on degree courses who were active in the HESA defined reporting year from 1 August 2008 to 31 July 2009.  
Numbers exclude EBS students studying pre-MBA modules but who have not yet enrolled for the full degree programme and additional students who are registered for distance and distributed learning programmes but who were not taking assessments during the reporting period. In total the School has approximately 8,500 active transnational programme students studying in around 140 countries.

**UNDERGRADUATE FRESHERS: DOMICILES 2009/10 (ranked by population size)**

Academic year of entry	Year 1	Year 2	Year 3	Year 4	Year 5	Total: All Years	2008/09 Total	2007/08 Total
<b>UNIVERSITY TOTAL</b>	<b>1526</b>	<b>223</b>	<b>387</b>	<b>10</b>	<b>16</b>	<b>2162</b>	<b>1913</b>	<b>1713</b>
<b>UK</b>	<b>1305</b>	<b>174</b>	<b>65</b>	<b>2</b>		<b>1546</b>	<b>1322</b>	<b>1285</b>
Scotland	1034	141	64	2		1241	1052	1018
Rest of UK	271	33	1			305	270	267
<b>EU</b>	<b>117</b>	<b>12</b>	<b>304</b>	<b>8</b>	<b>16</b>	<b>457</b>	<b>371</b>	<b>383</b>
France	11	4	273	4		<u>292</u>	252	246
Germany	6		17	4	16	<u>43</u>	46	52
Greece	22	2	4			<u>28</u>	27	26
Ireland	13	1	8			<u>22</u>	26	38
Poland	10	2				<u>12</u>	15	21
Sweden	8		1			<u>9</u>	2	2
Bulgaria	5		1			6	2	1
Finland	6					6	3	2
Italy	6					6	3	6
Spain	5	1				6	3	4
Cyprus	4					4	10	2
Belgium	3	1				4	1	6
Lithuania	3					3	4	1
Luxembourg	3					3	1	2
Netherlands	2	1				3	1	2
Czech Republic	2					2	1	
Hungary	2					2		1
Malta	2					2		
Austria	1					1	1	1
Denmark	1					1		2
Portugal	1					1	1	
Slovakia	1					1		1
<b>Overseas non-EU</b>	<b>104</b>	<b>37</b>	<b>18</b>			<b>159</b>	<b>194</b>	<b>7</b>
China (incl.Hong Kong)	27	7	8			<u>42</u>	54	
Norway	20	2	1			<u>23</u>	24	2
Malaysia	6	13	2			<u>21</u>	16	1
Saudi Arabia	11	1	1			<u>13</u>		
Nigeria	6	2	1			<u>9</u>	3	
Kazakhstan	2	3				5	4	
Switzerland	4					4	3	
India	1	1	1			3	6	
UAE	3					3	2	1
Brunei	1	1				2	1	
Egypt	1	1				2		
Iran	1		1			2		
Libya	2					2	9	
Oman	2					2	5	
Qatar		1	1			2		
Russia	1	1				2	2	
U.S.A.	2					2	2	
Angola	1					1		
Bangladesh	1					1		
Canada	1					1		
Faroe Islands	1					1		
Indonesia	1					1		
Japan			1			1		
Jordan	1					1	2	
Kenya	1					1	1	
Pakistan		1				1	4	
Philippines		1				1		
Serbia	1					1		
Singapore		1				1		
South Korea	1					1	1	
Sri Lanka	1					1		1
Trinidad & Tobago	1					1		
Turkmenistan	1					1		
Uganda			1			1		
Vietnam	1					1	6	
Zambia		1				1	1	
Zimbabwe	1					1		

**POSTGRADUATE TAUGHT COURSE FRESHERS: DOMICILES 2009/10**  
(ranked by population size)

UK	Total		
	09/10	08/09	07/08
<b>Univ Total</b>	<b>339</b>		
Scotland	249	254	202
Rest of UK	90	69	75
EU	Total		
	09/10	08/09	07/08
	<b>326</b>		
<u>Greece</u>	<u>103</u>	80	99
<u>Ireland</u>	<u>74</u>	39	40
<u>Germany</u>	<u>45</u>	22	20
<u>France</u>	<u>40</u>	37	30
<u>Spain</u>	<u>24</u>	11	18
Italy	8	3	3
Poland	8	7	9
Cyprus	6	6	3
Romania	4	2	1
Sweden	3	1	
Latvia	2	1	
Portugal	2		1
Austria	1	2	1
Belgium	1	1	2
Bulgaria	1		1
Denmark	1		1
Hungary	1	1	
Luxembourg	1		
Slovakia	1	1	1

**POSTGRADUATE RESEARCH FRESHERS: DOMICILES 2009/10**

	09/10	08/09	07/08
<b>Univ Total</b>	<b>84</b>		
UK	<b>40</b>		
Scotland	29	30	20
Rest of UK	11	6	12
EU	<b>14</b>		
Germany	4	5	1
France	3	3	2
Greece	2	1	2
Italy	2		1
Ireland	1	1	
Cyprus	1	1	
Portugal	1		
OS	<b>30</b>		
Saudi Arabia	5		
China	4	6	6
Syria	4	3	8
Libya	3	4	2
Iraq	2		
Albania	1		
Bangladesh	1	1	2
Botswana	1		
Canada	1	1	
Ghana	1		
India	1	2	4
Malaysia	1	1	
Nigeria	1	1	
Oman	1		1
Russia	1	1	
Togo	1	1	
UAE	1		

Overseas non-EU	Total			Total
	09/10	08/09	07/08	09/10
	<b>679</b>			<b>1344</b>
China	129	82	100	
India	99	70	94	
Nigeria	83	66	66	
Saudi Arabia	82	33	21	
Libya	57	23	8	
Kazakhstan	19	11	5	
Malaysia	19	16	10	
Ghana	15	15	19	
Thailand	13	16	8	
Pakistan	12	20	22	
Norway	9	4	6	
Syria	9	4		
U.S.A.	9	10	6	
Iran	8	9	7	
Mexico	7	15	6	
Oman	6	13	10	
Taiwan	6	8	9	
Canada	5	5	16	
Kenya	5	4	4	
Russia	5	2	4	
Bangladesh	4	2	4	
Egypt	3	2	3	
Ethiopia	3	2	3	
Indonesia	3	4	1	
Kuweit	3	3	6	
Malawi	3		2	
Sudan	3	4		
Switzerland	3	1		
Turkey	3		3	
Vietnam (North)	3	1		
Azerbaijan	2	1	2	
Brazil	2	5	4	
Hong Kong	2	1		
Jordan	2	2	2	
Nepal	2	1	3	
Singapore	2	4	4	
South Korea	2	2	2	
Uganda	2	3	3	
UAE	2	3	2	
Vietnam Rep	2	1	2	
Zambia	2	1	2	
Afghanistan	1		2	
Albania	1			
Angola	1	1		
Argentina	1	1	2	
Armenia	1			
Australia	1	3	3	
Bahrain	1	1	2	
Brunei	1	2	2	
Cameroon Rep	1	2	1	
Colombia	1	4	6	
Costa Rica	1	1	1	
Ecuador	1	1		
Honduras	1			
Iceland	1			
Iraq	1			
Israel	1			
Japan	1	1	2	
Kosovo	1	1		
Lebanon	1	1		
New Zealand	1			
Peru	1			
Philippines	1	3		
Serbia	1	2		
Somalia	1			
South Africa	1		1	
Tanzania	1	5		
Ukraine	1		3	
Venezuela	1	2	2	
Yemen	1			

## APPLICATIONS AND ADMISSIONS

### TOTAL NUMBER OF UNDERGRADUATE COURSES 2005 - 2009

(courses recruited to through UCAS for 2005 - 2009 entry (UCAS course codes))

	2009 Entry	2008 Entry	2007 Entry	2006 Entry	2005 Entry
<b>TOTAL*</b>	<b>192</b>	<b>197</b>	<b>188</b>	<b>184</b>	<b>177</b>

\*Edinburgh Campus and Scottish Borders Campus

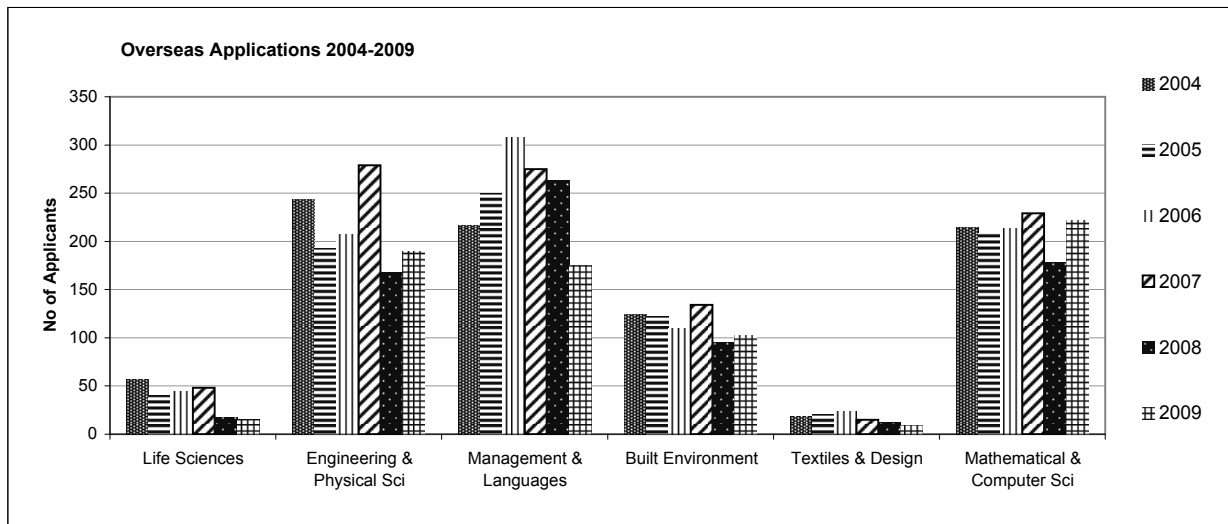
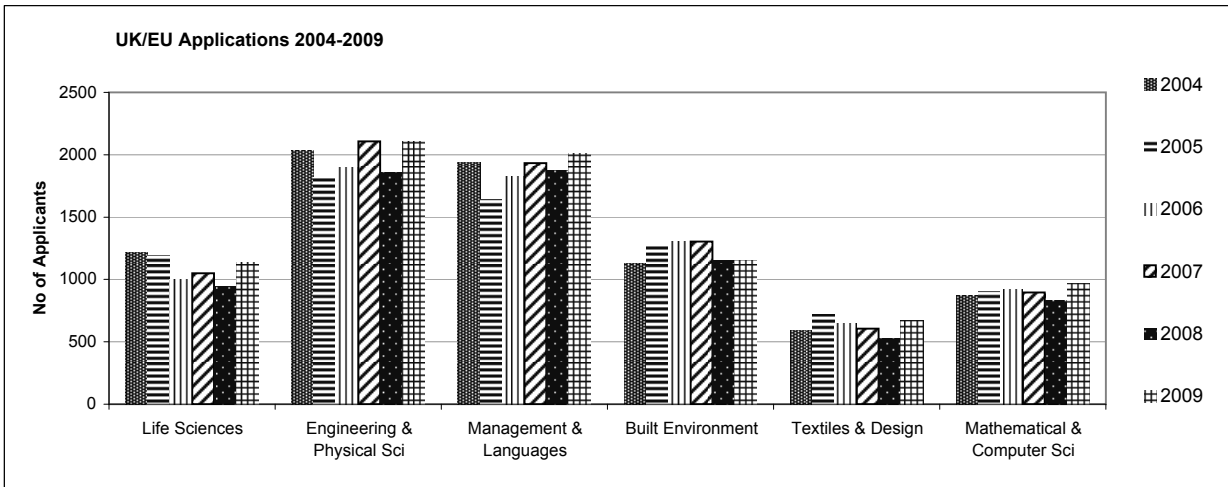
### UNDERGRADUATE APPLICATIONS (UCAS) 2005 – 2009

Full application statistics are presented in following pages.

	2009 Entry	2008 Entry	2007 Entry	2006 Entry	2005 Entry
Edinburgh Campus	7759	7095	7990	7570	7475
Scottish Borders Campus	996	823	888	916	904
<b>TOTAL</b>	<b>8755</b>	<b>7918</b>	<b>8878</b>	<b>8486</b>	<b>8379</b>

### UNDERGRADUATE ENTRANTS: 2005 – 2009

	2009 Entry	2008 Entry	2007 Entry	2006 Entry	2005 Entry
Edinburgh Campus	1929	1630	1560	1502	1395
Scottish Borders Campus	257	244	222	206	193
<b>TOTAL</b>	<b>2186</b>	<b>1874</b>	<b>1782</b>	<b>1708</b>	<b>1588</b>





## UNDERGRADUATE UCAS APPLICATION STATISTICS 2005-2009

### UK/EU Applicants (Residential Status on UCAS form)

SCHOOL/Programme	2009 Entry Apps at 10/10/2009	% change 09/08	2008 Entry Apps at 10/10/2008	% change 08/07	2007 Entry Apps at 10/10/2007	% change 07/06	2006 Entry Apps at 02/10/2006	% change 06/05	2005 Entry Apps at 30/09/2005
<b>UNIVERSITY TOTAL</b>	<b>8043</b>	<b>11</b>	<b>7265</b>	<b>-8</b>	<b>7938</b>	<b>4</b>	<b>7649</b>	<b>3</b>	<b>7420</b>
<b>BUILT ENVIRONMENT</b>	<b>1156</b>	<b>0</b>	<b>1152</b>	<b>-12</b>	<b>1303</b>	<b>0</b>	<b>1301</b>	<b>2</b>	<b>1274</b>
Architectural Engineering	121	22	99	100					
Civil Engineering	535	11	480	-9	528	1	523	11	471
Construction Management & Surveying	325	-1	329	-35	510	-9	558	8	518
Urban Studies	175	-28	244	-8	265	20	220	-23	285
<b>ENGINEERING &amp; PHYSICAL SCIENCES</b>	<b>2104</b>	<b>13</b>	<b>1856</b>	<b>-12</b>	<b>2108</b>	<b>11</b>	<b>1894</b>	<b>4</b>	<b>1821</b>
Chemical Engineering	363	26	288	-2	294	27	232	15	201
Chemistry	453	19	380	-25	507	9	465	4	448
Combined Studies (BSc)	74	12	66	-19	81	80	45	-15	53
Electrical, Electronic & Computer Engineering	209	-3	215	-12	245	0	244	-8	265
Mechanical Engineering	603	8	558	-12	631	11	567	-3	587
Physics	324	24	262	-7	283	3	274	27	216
BEng Engineering	78	-10	87	30	67	0	67	31	51
<b>LIFE SCIENCES</b>	<b>1135</b>	<b>20</b>	<b>947</b>	<b>-10</b>	<b>1049</b>	<b>5</b>	<b>997</b>	<b>-16</b>	<b>1190</b>
Biology	490	27	386	-18	468	11	421	-19	519
Sport & Exercise Science	336	-8	364	5	346	-4	360	-12	411
Psychology	309	57	197	-16	235	9	216	-17	260
<b>MANAGEMENT &amp; LANGUAGES</b>	<b>2012</b>	<b>7</b>	<b>1874</b>	<b>-3</b>	<b>1934</b>	<b>6</b>	<b>1824</b>	<b>11</b>	<b>1643</b>
Accountancy & Finance	592	12	528	7	494	-2	505	13	446
Combined Studies (BA)						-100	11	-8	12
Economics	202	-10	224	-9	245	22	201	10	183
Languages	383	9	351	-16	416	-3	431	20	360
Management	561	5	536	-7	578	16	499	-3	516
Management (Scottish Borders Campus)	274	17	235	17	201	14	177	40	126
<b>MATHEMATICAL &amp; COMPUTER SCIENCES</b>	<b>965</b>	<b>16</b>	<b>829</b>	<b>-8</b>	<b>897</b>	<b>-2</b>	<b>917</b>	<b>2</b>	<b>901</b>
Actuarial Mathematics & Statistics	255	8	237	13	210	-19	259	2	254
Computer Science	353	27	279	-20	347	5	332	-17	400
Mathematics	357	14	313	-8	340	4	326	32	247
<b>TEXTILES AND DESIGN</b>	<b>671</b>	<b>11</b>	<b>607</b>	<b>-6</b>	<b>647</b>	<b>-10</b>	<b>716</b>	<b>21</b>	<b>591</b>

### Overseas Applicants (Residential Status on UCAS form)

SCHOOL/Programme	2009 Entry Apps at 10/10/2008	% change 09/08	2008 Entry Apps at 10/10/2008	% change 08/07	2007 Entry Apps at 10/10/2007	% change 07/06	2006 Entry Apps at 02/10/2006	% change 06/05	2005 Entry Apps at 30/09/2005
<b>UNIVERSITY TOTAL</b>	<b>712</b>	<b>-3</b>	<b>733</b>	<b>-25</b>	<b>980</b>	<b>8</b>	<b>906</b>	<b>9</b>	<b>834</b>
<b>BUILT ENVIRONMENT</b>	<b>102</b>	<b>7</b>	<b>95</b>	<b>-29</b>	<b>134</b>	<b>22</b>	<b>110</b>	<b>-10</b>	<b>122</b>
Architectural Engineering	17	42	12	100					
Civil Engineering	35	17	30	-39	49	-8	53	29	41
Construction Management & Surveying	32	-9	35	-47	66	61	41	-27	56
Urban Studies	18	0	18	-5	19	19	16	-36	25
<b>ENGINEERING &amp; PHYSICAL SCIENCES</b>	<b>190</b>	<b>13</b>	<b>168</b>	<b>-40</b>	<b>279</b>	<b>35</b>	<b>207</b>	<b>7</b>	<b>193</b>
Chemical Engineering	66	57	42	-37	67	56	43	34	32
Chemistry	5	-38	8	-69	26	37	19	12	17
Combined Studies (BSc)		-100	1	-80	5	-17	6	-25	8
Electrical, Electronic & Computer Engineering	44	-27	60	-22	77	13	68	5	65
Mechanical Engineering	61	36	45	-46	83	30	64	-3	66
Physics	10	0	10	-44	18	260	5	67	3
BEng Engineering	4	100	2	-33	3	50	2	0	2
<b>LIFE SCIENCES</b>	<b>15</b>	<b>-12</b>	<b>17</b>	<b>-65</b>	<b>48</b>	<b>9</b>	<b>44</b>	<b>10</b>	<b>40</b>
Biology	12	-25	16	-56	36	38	26	-10	29
Sport & Exercise Science	2	100	1	-86	7	17	6	0	6
Psychology	1			-100	5	-58	12	140	5
<b>MANAGEMENT &amp; LANGUAGES</b>	<b>175</b>	<b>-33</b>	<b>263</b>	<b>-4</b>	<b>275</b>	<b>-11</b>	<b>308</b>	<b>23</b>	<b>250</b>
Accountancy & Finance	49	-52	102	32	77	-7	83	2	81
Combined Studies (BA)								-100	5
Economics	28	-7	30	-43	53	-7	57	50	38
Languages	8	-20	10	67	6	-63	16	-11	18
Management	48	-33	72	-3	74	-12	84	25	67
Management (Scottish Borders Campus)	42	-14	49	-25	65	-4	68	66	41
<b>MATHEMATICAL &amp; COMPUTER SCIENCES</b>	<b>221</b>	<b>24</b>	<b>178</b>	<b>-22</b>	<b>229</b>	<b>8</b>	<b>213</b>	<b>2</b>	<b>208</b>
Actuarial Mathematics & Statistics	153	26	121	-7	130	25	104	-22	134
Computer Science	31	-26	42	-16	50	-32	73	28	57
Mathematics	37	147	15	-69	49	36	36	112	17
<b>TEXTILES AND DESIGN</b>	<b>9</b>	<b>-25</b>	<b>12</b>	<b>-20</b>	<b>15</b>	<b>-38</b>	<b>24</b>	<b>14</b>	<b>21</b>

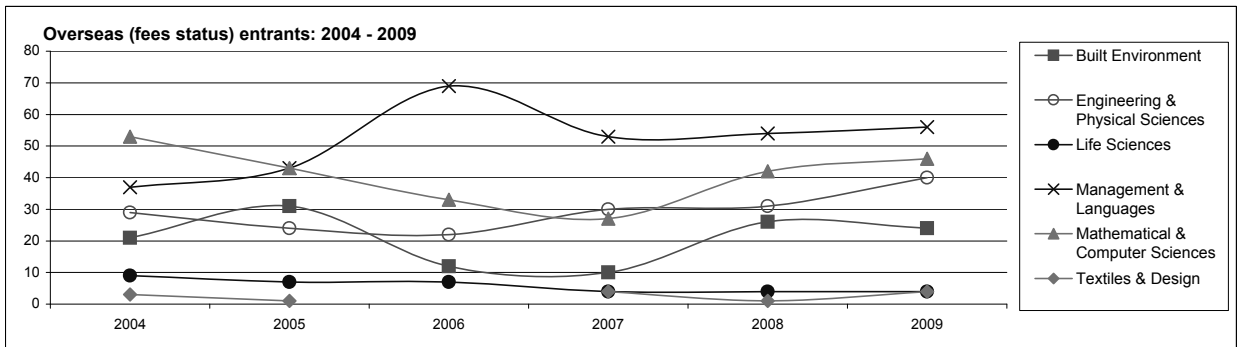
**UNDERGRADUATE ADMISSIONS 2005-2009 ENTRY**

**UK/EU (fees status)**

SCHOOL/Programme	2009 ENTRANTS	% change 09/08	2008 ENTRANTS	% change 08/07	2007 ENTRANTS	% change 07/06	2006 ENTRANTS	% change 06/05	2005 ENTRANTS
<b>UNIVERSITY TOTAL</b>	<b>2012</b>	<b>17</b>	<b>1716</b>	<b>6</b>	<b>1613</b>	<b>0</b>	<b>1612</b>	<b>13</b>	<b>1424</b>
<b>BUILT ENVIRONMENT</b>	<b>256</b>	<b>25</b>	<b>205</b>	<b>-3</b>	<b>212</b>	<b>7</b>	<b>199</b>	<b>16</b>	<b>172</b>
Architectural Engineering	23	64	14	100					
Civil Engineering	121	36	89	11	80	-14	93	50	62
Construction Management & Surveying	79	30	61	-23	79	13	70	13	62
Urban Planning	33	-20	41	-23	53	47	36	-25	48
<b>ENGINEERING &amp; PHYSICAL SCIENCES</b>	<b>564</b>	<b>13</b>	<b>498</b>	<b>4</b>	<b>479</b>	<b>2</b>	<b>469</b>	<b>19</b>	<b>393</b>
Chemical Engineering	77	22	63	29	49	26	39	-9	43
Chemistry	125	25	100	-6	106	-6	113	28	88
Combined Studies (BSc)	37	3	36	44	25	79	14	-39	23
Electrical, Electronic & Computer Engineering	65	16	56	-23	73	6	69	19	58
Mechanical Engineering	156	6	147	17	126	-10	140	25	112
Physics	82	8	76	-14	88	10	80	31	61
BEng Engineering	22	10	20	67	12	-14	14	75	8
<b>LIFE SCIENCES</b>	<b>277</b>	<b>41</b>	<b>197</b>	<b>4</b>	<b>189</b>	<b>15</b>	<b>164</b>	<b>-6</b>	<b>175</b>
Biology	135	35	100	-4	104	21	86	-13	99
Sport & Exercise Science	66	8	61	39	44	16	38	9	35
Psychology	76	111	36	-12	41	3	40	-2	41
<b>MANAGEMENT &amp; LANGUAGES</b>	<b>449</b>	<b>9</b>	<b>411</b>	<b>-4</b>	<b>426</b>	<b>8</b>	<b>396</b>	<b>11</b>	<b>358</b>
Accountancy & Finance	136	27	107	9	98	5	93	-8	101
Combined Studies (BA)								-100	1
Economics	53	6	50	2	49	7	46	44	32
Languages	109	25	87	-19	107	29	83	-8	90
Management	103	-3	106	-13	122	17	104	-7	112
Management (Scottish Borders Campus)	48	-21	61	22	50	-29	70	218	22
<b>MATHEMATICAL &amp; COMPUTER SCIENCES</b>	<b>265</b>	<b>18</b>	<b>225</b>	<b>21</b>	<b>186</b>	<b>-13</b>	<b>215</b>	<b>25</b>	<b>172</b>
Actuarial Mathematics & Statistics	71		71	73	41	-45	74	25	59
Computer Science	102	29	79	-2	81	-6	86	19	72
Mathematics	92	23	75	17	64	16	55	34	41
<b>TEXTILES &amp; DESIGN</b>	<b>201</b>	<b>12</b>	<b>180</b>	<b>49</b>	<b>121</b>	<b>-28</b>	<b>169</b>	<b>10</b>	<b>154</b>

**Overseas (fees status)**

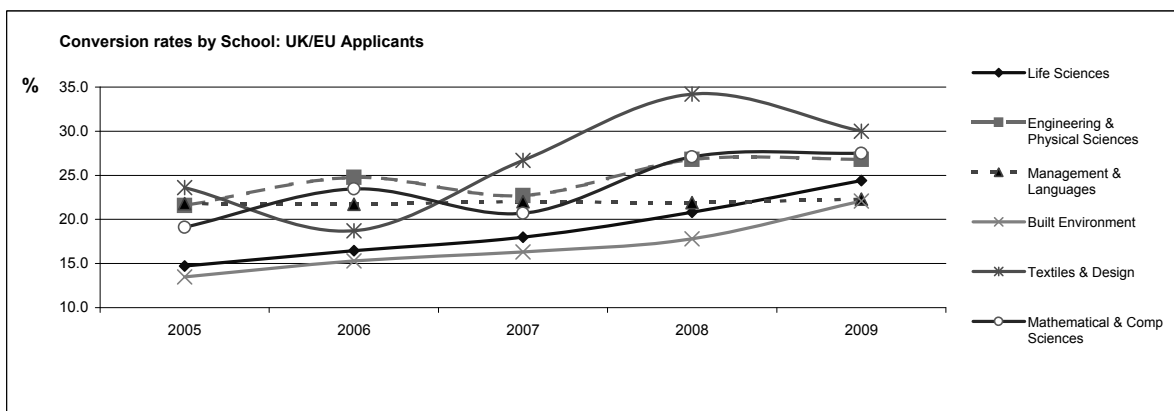
SCHOOL/Programme	2009 ENTRANTS	% change 09/08	2008 ENTRANTS	% change 08/07	2007 ENTRANTS	% change 07/06	2006 ENTRANTS	% change 06/05	2005 ENTRANTS
<b>UNIVERSITY TOTAL</b>	<b>174</b>	<b>10</b>	<b>158</b>	<b>26</b>	<b>125</b>	<b>-14</b>	<b>146</b>	<b>-3</b>	<b>151</b>
<b>BUILT ENVIRONMENT</b>	<b>24</b>	<b>-8</b>	<b>26</b>	<b>160</b>	<b>10</b>	<b>-17</b>	<b>12</b>	<b>-61</b>	<b>31</b>
Architectural Engineering	4	100	2	100					
Civil Engineering	9	200	3	200	1		1		1
Construction Management & Surveying	7		7	17	6	-25	8	-60	20
Urban Planning	4	-71	14	367	3		3	-70	10
<b>ENGINEERING &amp; PHYSICAL SCIENCES</b>	<b>40</b>	<b>29</b>	<b>31</b>	<b>3</b>	<b>30</b>	<b>36</b>	<b>22</b>	<b>-8</b>	<b>24</b>
Chemical Engineering	13	160	5	-50	10	400	2	-60	5
Chemistry		-100	4	300	1	-50	2	-33	3
Combined Studies (BSc)	1					-100	1		1
Electrical, Electronic & Computer Engineering	12	33	9	29	7	-22	9	29	7
Mechanical Engineering	11	-8	12	9	11	38	8		8
Physics	2	100	1		1				
BEng Engineering	1								
<b>LIFE SCIENCES</b>	<b>4</b>	<b>0</b>	<b>4</b>	<b>0</b>	<b>4</b>	<b>-43</b>	<b>7</b>	<b>0</b>	<b>7</b>
Biology	4	33	3	-25	4	-20	5	25	4
Sport & Exercise Science								-100	2
Psychology			1			-100	2	100	1
<b>MANAGEMENT &amp; LANGUAGES</b>	<b>56</b>	<b>4</b>	<b>54</b>	<b>2</b>	<b>53</b>	<b>-23</b>	<b>69</b>	<b>60</b>	<b>43</b>
Accountancy & Finance	22	-4	23	-12	26		26	86	14
Economics	14	100	7	-13	8	-20	10	233	3
Languages	2	-50	4					-100	7
Management	14	-22	18	38	13	-35	20	11	18
Management (Scottish Borders Campus)	4	100	2	-67	6	-54	13	1200	1
<b>MATHEMATICAL &amp; COMPUTER SCIENCES</b>	<b>46</b>	<b>10</b>	<b>42</b>	<b>56</b>	<b>27</b>	<b>-18</b>	<b>33</b>	<b>-23</b>	<b>43</b>
Actuarial Mathematics & Statistics	29		29	45	20		20	-44	36
Computer Science	7	-22	9	800	1	-89	9	125	4
Mathematics	10	150	4	-33	6	50	4	33	3
<b>TEXTILES &amp; DESIGN</b>	<b>4</b>	<b>300</b>	<b>1</b>	<b>0</b>	<b>1</b>	<b>-67</b>	<b>3</b>	<b>0</b>	<b>3</b>



## CONVERSION RATES OF UNDERGRADUATE APPLICATIONS TO ENTRANTS 2005-2009 ENTRY

### UK/EU Applicants

SCHOOL/Programme	Applications					Entrants					Conversion Apps to Entrants %				
	2009	2008	2007	2006	2005	2009	2008	2007	2006	2005	2009	2008	2007	2006	2005
<b>UNIVERSITY TOTAL</b>	<b>8043</b>	<b>7185</b>	<b>7898</b>	<b>7580</b>	<b>7545</b>	<b>2012</b>	<b>1716</b>	<b>1654</b>	<b>1564</b>	<b>1439</b>	<b>25.0</b>	<b>23.9</b>	<b>20.9</b>	<b>20.6</b>	<b>19.1</b>
<b>BUILT ENVIRONMENT</b>	<b>1156</b>	<b>1152</b>	<b>1303</b>	<b>1301</b>	<b>1274</b>	<b>256</b>	<b>205</b>	<b>212</b>	<b>199</b>	<b>172</b>	<b>22.1</b>	<b>17.8</b>	<b>16.3</b>	<b>15.3</b>	<b>13.5</b>
Architectural Engineering	121	99				23	14				19.0	14.1			
Civil Engineering	535	480	510	558	536	121	89	80	93	62	22.6	18.5	15.7	16.7	11.6
Construction Mgt & Surveying	325	329	528	523	453	79	61	79	70	62	24.3	18.5	15.0	13.4	13.7
Urban Studies	175	244	265	220	285	33	41	53	36	48	18.9	16.8	20.0	16.4	16.8
<b>ENGINEERING &amp; PHYSICAL SCIENCES</b>	<b>2104</b>	<b>1856</b>	<b>2108</b>	<b>1894</b>	<b>1821</b>	<b>564</b>	<b>498</b>	<b>479</b>	<b>469</b>	<b>393</b>	<b>26.8</b>	<b>26.8</b>	<b>22.7</b>	<b>24.8</b>	<b>21.6</b>
Chemical Engineering	363	288	294	232	201	77	63	49	39	43	21.2	21.9	16.7	16.8	21.4
Chemistry	453	380	507	465	448	125	100	106	113	88	27.6	26.3	20.9	24.3	19.6
Combined Studies (BSc)	74	66	81	45	53	37	36	25	14	23	50.0	54.5	30.9	31.1	43.4
Electrical, Electronic & Computer Engineering	209	215	245	244	265	65	56	73	69	58	31.1	26.0	29.8	28.3	21.9
Mechanical Engineering	603	558	631	567	587	156	147	126	140	112	25.9	26.3	20.0	24.7	19.1
Physics	324	262	283	274	216	82	76	88	80	61	25.3	29.0	31.1	29.2	28.2
BEng Engineering	78	87	67	67	51	22	20	12	14	8	28.2	23.0	17.9	20.9	15.7
<b>LIFE SCIENCES</b>	<b>1135</b>	<b>947</b>	<b>1049</b>	<b>997</b>	<b>1190</b>	<b>277</b>	<b>197</b>	<b>189</b>	<b>164</b>	<b>175</b>	<b>24.4</b>	<b>20.8</b>	<b>18.0</b>	<b>16.4</b>	<b>14.7</b>
Biological Sciences	490	386	468	421	519	135	100	104	86	99	27.6	25.9	22.2	20.4	19.1
Psychology	309	364	235	216	260	76	61	41	40	41	24.6	16.8	17.4	18.5	15.8
Sport & Exercise Science	336	197	346	360	411	66	36	44	38	35	19.6	18.3	12.7	10.6	8.5
<b>MANAGEMENT &amp; LANGUAGES</b>	<b>2012</b>	<b>1874</b>	<b>1934</b>	<b>1824</b>	<b>1643</b>	<b>449</b>	<b>411</b>	<b>426</b>	<b>396</b>	<b>358</b>	<b>22.3</b>	<b>21.9</b>	<b>22.0</b>	<b>21.7</b>	<b>21.8</b>
Accountancy & Finance	592	528	494	505	446	136	107	98	93	101	23.0	20.3	19.8	18.4	22.6
Combined Studies (BA)				11	12					1					8.3
Economics	202	224	245	201	183	53	50	49	46	32	26.2	22.3	20.0	22.9	17.5
Languages	383	351	416	431	360	109	87	107	83	90	28.5	24.8	25.7	19.3	25.0
Management	561	536	578	499	516	103	106	122	104	112	18.4	19.8	21.1	20.8	21.7
Management (Scottish Borders Campus)	274	235	201	177	126	48	61	50	70	22	17.5	26.0	24.9	39.5	17.5
<b>MATHEMATICAL &amp; COMPUTER SCIENCES</b>	<b>965</b>	<b>829</b>	<b>897</b>	<b>917</b>	<b>901</b>	<b>265</b>	<b>225</b>	<b>186</b>	<b>215</b>	<b>172</b>	<b>27.5</b>	<b>27.1</b>	<b>20.7</b>	<b>23.4</b>	<b>19.1</b>
Actuarial Mathematics & Statistics	255	237	210	259	254	71	71	41	74	59	27.8	30.0	19.5	28.6	23.2
Computer Science	353	279	347	332	400	102	79	81	86	72	28.9	28.3	23.3	25.9	18.0
Mathematics	357	313	340	326	247	92	75	64	55	41	25.8	24.0	18.8	16.9	16.6
<b>TEXTILES &amp; DESIGN</b>	<b>671</b>	<b>527</b>	<b>607</b>	<b>647</b>	<b>716</b>	<b>201</b>	<b>180</b>	<b>162</b>	<b>121</b>	<b>169</b>	<b>30.0</b>	<b>34.2</b>	<b>26.7</b>	<b>18.7</b>	<b>23.6</b>



### Overseas Applicants

SCHOOL/Programme	Applications					Entrants					Conversion Apps to Entrants %				
	2009	2008	2007	2006	2005	2009	2008	2007	2006	2005	2009	2008	2007	2006	2005
<b>UNIVERSITY TOTAL</b>	<b>712</b>	<b>733</b>	<b>1000</b>	<b>918</b>	<b>834</b>	<b>174</b>	<b>158</b>	<b>128</b>	<b>145</b>	<b>150</b>	<b>24.4</b>	<b>21.6</b>	<b>12.8</b>	<b>15.8</b>	<b>18.0</b>
<b>BUILT ENVIRONMENT</b>	<b>102</b>	<b>95</b>	<b>134</b>	<b>122</b>	<b>122</b>	<b>24</b>	<b>26</b>	<b>10</b>	<b>12</b>	<b>32</b>	<b>23.5</b>	<b>27.4</b>	<b>7.5</b>	<b>9.8</b>	<b>26.2</b>
Architectural Engineering	17	12				4	2				23.5	16.7			
Civil Engineering	35	30	49	41	41	9	3	1	1	2	25.7	10.0	2.0	2.4	4.9
Construction Mgt & Surveying	32	35	66	56	56	7	7	6	8	10	21.9	20.0	9.1	14.3	17.9
Urban Studies	18	18	19	25	25	4	14	3	3	20	22.2	77.8	15.8	12.0	80.0
<b>ENGINEERING &amp; PHYSICAL SCIENCES</b>	<b>190</b>	<b>168</b>	<b>279</b>	<b>207</b>	<b>193</b>	<b>40</b>	<b>31</b>	<b>30</b>	<b>22</b>	<b>24</b>	<b>21.1</b>	<b>18.5</b>	<b>10.8</b>	<b>10.6</b>	<b>12.4</b>
Chemical Engineering	66	42	67	43	32	13	5	10	2	5	19.7	11.9	14.9	4.7	15.6
Chemistry	5	8	26	19	17		4	1	2	3		50.0	3.8	10.5	17.6
Combined Studies (BSc)		1	5	6	8	1			1	1	~			16.7	12.5
Electrical, Electronic & Computer Engineering	44	60	77	68	65	12	9	7	9	7	27.3	15.0	9.1	13.2	10.8
Mechanical Engineering	61	45	83	64	66	11	12	11	8	8	18.0	26.7	13.3	12.5	12.1
Physics	10	10	18	5	3	2	1	1			20.0	10.0	5.6		
BEng Engineering	4	2	3	2	2	1					25.0				
<b>LIFE SCIENCES</b>	<b>15</b>	<b>17</b>	<b>48</b>	<b>44</b>	<b>40</b>	<b>4</b>	<b>4</b>	<b>4</b>	<b>7</b>	<b>7</b>	<b>26.7</b>	<b>23.5</b>	<b>8.3</b>	<b>15.9</b>	<b>17.5</b>
Biological Sciences	12	16	36	26	29	4	3	4	5	4	33.3	18.8	11.1	19.2	13.8
Psychology	1		5	12	5		1		2	1				16.7	20.0
Sport & Exercise Science	2	1	7	6	6					2					33.3
<b>MANAGEMENT &amp; LANGUAGES</b>	<b>175</b>	<b>263</b>	<b>295</b>	<b>308</b>	<b>250</b>	<b>56</b>	<b>54</b>	<b>53</b>	<b>69</b>	<b>43</b>	<b>32.0</b>	<b>20.5</b>	<b>18.0</b>	<b>22.4</b>	<b>17.2</b>
Accountancy & Finance	49	102	77	83	81	22	23	26	26	14	44.9	22.5	33.8	31.3	17.3
Combined Studies (BA)					5										
Economics	28	30	53	57	38	14	7	8	10	3	50.0	23.3	15.1	17.5	7.9
Languages	8	10	6	16	18	2	4			7	25.0	40.0			38.9
Management	48	72	74	84	67	14	18	13	20	18	29.2	25.0	17.6	23.8	26.9
Management (Scottish Borders Campus)	42	49	85	68	41	4	2	6	13	1	9.5	4.1	7.1	19.1	2.4
<b>MATHEMATICAL &amp; COMPUTER SCIENCES</b>	<b>221</b>	<b>178</b>	<b>229</b>	<b>213</b>	<b>208</b>	<b>46</b>	<b>42</b>	<b>27</b>	<b>33</b>	<b>43</b>	<b>20.8</b>	<b>23.6</b>	<b>11.8</b>	<b>15.5</b>	<b>20.7</b>
Actuarial Mathematics & Statistics	153	121	130	104	134	29	29	20	20	36	19.0	24.0	15.4	19.2	26.9
Computer Science	31	42	50	73	57	7	9	1	9	4	22.6	21.4	2.0	12.3	7.0
Mathematics	37	15	49	36	17	10	4	6	4	3	27.0	26.7	12.2	11.1	17.6
<b>TEXTILES &amp; DESIGN</b>	<b>9</b>	<b>12</b>	<b>15</b>	<b>24</b>	<b>21</b>	<b>4</b>	<b>1</b>	<b>4</b>	<b>2</b>	<b>1</b>	<b>44.4</b>	<b>8.3</b>	<b>26.7</b>	<b>8.3</b>	<b>4.8</b>

**QUALIFICATIONS HELD BY FULL-TIME UNDERGRADUATE NEW ENTRANTS: 2005 - 2009 ENTRY**

SCHOOL/Programme

\* TOTAL UCAS POINTS

	2009 Entry		2008 Entry		2007 Entry		2006 Entry		2005 Entry	
	Nos	Tariff	Nos	Tariff	Nos	Tariff	Nos	Tariff	Nos	Tariff
<b>UNIVERSITY TOTAL</b>	<b>1361</b>	<b>344</b>	<b>885</b>	<b>334</b>	<b>815</b>	<b>331</b>	<b>946</b>	<b>334</b>	<b>923</b>	<b>320</b>
<b>BUILT ENVIRONMENT</b>	<b>177</b>	<b>307</b>	<b>97</b>	<b>352</b>	<b>103</b>	<b>324</b>	<b>122</b>	<b>344</b>	<b>123</b>	<b>322</b>
Building	69	267	30	364	33	317	35	336	44	314
Civil Engineering	86	339	46	355	42	326	61	361	47	332
Urban Studies	22	311	21	329	28	330	26	313	32	316
<b>ENGINEERING &amp; PHYSICAL SCIENCES</b>	<b>338</b>	<b>375</b>	<b>248</b>	<b>335</b>	<b>205</b>	<b>336</b>	<b>265</b>	<b>321</b>	<b>220</b>	<b>312</b>
Chemical Engineering	71	400	46	343	38	374	33	368	28	386
Chemistry	61	391	57	313	47	325	72	301	55	320
Electrical, Electronic & Computer Engineering	36	339	25	312	24	318	28	322	26	297
Mechanical Engineering	96	368	54	360	54	338	74	325	69	300
Physics	46	374	35	360	29	342	36	325	16	312
Combined Studies (BSc)	9	304	12	300	8	257	11	260	18	252
Engineering (BEng)	19	364	19	320	5	328	11	321	8	284
<b>LIFE SCIENCES</b>	<b>138</b>	<b>336</b>	<b>115</b>	<b>299</b>	<b>102</b>	<b>309</b>	<b>110</b>	<b>290</b>	<b>108</b>	<b>289</b>
Biology	18	352	42	289	41	303	52	291	53	292
Sport & Exercise Science	59	334	49	293	37	318	34	278	30	293
Psychology	61	333	24	328	24	305	24	307	25	281
<b>MANAGEMENT &amp; LANGUAGES</b>	<b>306</b>	<b>338</b>	<b>197</b>	<b>339</b>	<b>224</b>	<b>340</b>	<b>232</b>	<b>326</b>	<b>232</b>	<b>326</b>
Accountancy & Finance	119	300	51	335	57	340	64	327	82	335
Economics	36	345	21	314	26	294	33	291	16	317
Languages (incl Bus & Lang)	74	386	60	360	71	380	53	375	54	349
Management	69	352	64	331	68	321	73	312	78	304
Management (Scottish Borders Campus)	8	300	1	264	2	210	9	259	1	252
<b>MATHEMATICAL &amp; COMPUTER SCIENCES</b>	<b>215</b>	<b>381</b>	<b>155</b>	<b>352</b>	<b>108</b>	<b>349</b>	<b>175</b>	<b>384</b>	<b>145</b>	<b>354</b>
Actuarial Mathematics & Statistics	67	474	63	426	31	411	71	471	53	410
Computer Science	67	332	35	279	31	312	55	315	57	331
Mathematics	81	345	57	316	46	333	49	337	35	307
<b>TEXTILES &amp; DESIGN</b>	<b>187</b>	<b>297</b>	<b>73</b>	<b>315</b>	<b>73</b>	<b>300</b>	<b>42</b>	<b>331</b>	<b>95</b>	<b>306</b>

No of entrants in italics

Note that entrants to some of the courses based in the School of Textiles and Design are admitted on the basis of their portfolio as well as academic qualifications.

\* UCAS points allocated to Highers, Advanced Highers, A Levels, Advanced Subsidiaries, Vocational A Levels and Vocational Double Awards.

## PREVIOUS INSTITUTIONS OF FRESHERS: 2009 ENTRY (HOME FEE STATUS)

SCHOOL NAME	Town/City	Area	2009 No.	2008 No.	2007 No.	2006 No.
STEVENSON COLLEGE	Edinburgh	Edinburgh	63	43	27	20
EDINBURGH TELFORD COLLEGE	Edinburgh	Edinburgh	57	39	37	35
FORTH VALLEY COLLEGE OF FE	Falkirk	Stirlingshire	25	14	13	11
ADAM SMITH COLLEGE	Kirkcaldy	Fife	24	10	19	10
CARDONALD COLLEGE	Glasgow	Glasgow	23	25	20	13
CRAIGMOUNT HIGH SCHOOL	Edinburgh	Edinburgh	21	11	10	13
CURRIE HIGH SCHOOL	Currie	Edinburgh	21	12	10	11
JEWEL & ESK VALLEY COLLEGE	Dalkeith	Midlothian	20	18	15	10
BALWEARIE HIGH SCHOOL	Kirkcaldy	Fife	19	14	14	13
BALERNO HIGH SCHOOL	Balerno	Edinburgh	15	11	11	11
QUEEN ANNE HIGH SCHOOL	Dunfermline	Fife	15	11		
WEST CALDER HIGH SCHOOL	West Calder	West Lothian	14	12		
CULTS ACADEMY	Aberdeen	Aberdeenshire	13			
DEANS COMMUNITY HIGH SCHOOL	Livingston	West Lothian	12			
DALKEITH HIGH SCHOOL	Dalkeith	Midlothian	12			
CARNEGIE COLLEGE	Dunfermline	Fife	11			
FIRRHILL HIGH SCHOOL	Edinburgh	Edinburgh	11	11		
KIRKCALDY HIGH SCHOOL	Kirkcaldy	Fife	11			
MACKIE ACADEMY	Stonehaven	Aberdeenshire	11			
PORTOBELLO HIGH SCHOOL	Edinburgh	Edinburgh	11	13		
WEST LOTHIAN COLLEGE	Livingston	West Lothian	11			
GEORGE WATSON'S COLLEGE	Edinburgh	Edinburgh	10	11	11	11
KNOX ACADEMY	Haddington	East Lothian	10			

The above table shows the top 23 previous institutions by size of HWU entry population in 2009 out of a total of 545 institutions. Of the remainder, 38 institutions had populations of 5 to 9.

## ETHNICITY OF ENTRANTS (Home Fees Status): 2004 - 2009 ENTRY

	2009	2008 entry	2007 entry	2006 entry	2005 entry	2004 entry
<b>Total Home Freshers</b>	<b>1458</b>	<b>1320</b>	<b>1184</b>	<b>1152</b>	<b>1155</b>	<b>1193</b>
White British	1351	1223	1018	474	499	414
White Irish				33	22	43
White Scottish			2	523	514	634
Irish Traveller						
Other White			61	36	24	28
<b>Total White</b>	<b>1351</b>	<b>1223</b>	<b>1081</b>	<b>1066</b>	<b>1059</b>	<b>1119</b>
<b>% Total</b>	<b>92.7%</b>	<b>92.7%</b>	<b>91.3%</b>	<b>92.5%</b>	<b>91.7%</b>	<b>93.8%</b>
Black-Caribbean	2	1	1	2	3	1
Black-African	9	14	16	11	7	4
Other Black	2		1	2		
<b>Total Black</b>	<b>13</b>	<b>15</b>	<b>18</b>	<b>15</b>	<b>10</b>	<b>5</b>
<b>% Total</b>	<b>0.9%</b>	<b>1.1%</b>	<b>1.5%</b>	<b>1.3%</b>	<b>0.9%</b>	<b>0.4%</b>
Indian	11	9	3	4	14	10
Pakistani	27	27	21	24	28	22
Bangladeshi	4	4	3	2		2
Chinese	20	18	21	16	18	9
Other Asian background	6	3	3	6	4	2
<b>Total Asian</b>	<b>68</b>	<b>61</b>	<b>51</b>	<b>52</b>	<b>64</b>	<b>45</b>
<b>% Total</b>	<b>4.7%</b>	<b>4.6%</b>	<b>4.3%</b>	<b>4.5%</b>	<b>5.5%</b>	<b>3.8%</b>
White and Black Caribbean	1	2	1		1	2
White and Black African	1	2	1	1	1	2
White and Asian	14	7	20	7	10	10
Other mixed background	7	9	7	8	7	7
<b>Total Mixed</b>	<b>23</b>	<b>20</b>	<b>29</b>	<b>16</b>	<b>19</b>	<b>21</b>
<b>% Total</b>	<b>1.6%</b>	<b>1.5%</b>	<b>2.4%</b>	<b>1.4%</b>	<b>1.6%</b>	<b>1.8%</b>
<b>Other ethnic background</b>	<b>3</b>	<b>1</b>	<b>5</b>	<b>3</b>	<b>3</b>	<b>3</b>
<b>% Total</b>	<b>0.2%</b>	<b>0.1%</b>	<b>0.4%</b>	<b>0.3%</b>	<b>0.3%</b>	<b>0.3%</b>

## UNDERGRADUATE ENTRANTS DECLARING A DISABILITY: 2004 - 2009 ENTRY

DISABILITY	2009	2008	2007	2006	2005	2004
<b>Total declaring a disability</b>	<b>2220</b>	<b>1881</b>	<b>1782</b>	<b>1720</b>	<b>1590</b>	<b>1604</b>
Dyslexia	71	61	52	50	46	41
Blind/Partially Sighted	1	5	2	2	3	1
Deaf/Hard of Hearing	3	5	2	2	5	2
Wheelchair User/Mobility Difficulties	2	4	6	2	5	3
Needing personal care						
Mental Health problems	3	6	6	2	1	4
Unseen disability e.g. Diabetes, Epilepsy, Heart Condition	23	17	13	11	8	5
Two or more of the above disabilities	2	3	1	2	1	3
Disability not listed above	13	16	9	16	8	12
Austistic Spectrum Disorder/Asperger Syndrome	7	7	6	3	2	3
Specific Learning disability	4	7	5			
<b>Total declaring a disability</b>	<b>129</b>	<b>131</b>	<b>102</b>	<b>90</b>	<b>79</b>	<b>74</b>
<b>% total who have declared a disability</b>	<b>5.8%</b>	<b>7.0%</b>	<b>5.7%</b>	<b>5.2%</b>	<b>5.0%</b>	<b>4.6%</b>

FIRST DEGREES & OTHER AWARDS: 2005 - 2009

2009 (Academic Year 2008/09)

SCHOOL/Programme	2009										2008										2007																	
	EFD	Honours 1st	Honours 2.1	% EFD, 1.2.1	% EFD, 1.2.1	2.2	3rd	with honours	Ord Yr.4	Other Cert HE	Dip HE	Total	EFD	Honours 1st	Honours 2.1	% EFD, 1.2.1	% EFD, 1.2.1	2.2	3rd	with honours	Ord Yr.4	Other Cert HE	Dip HE	Total	EFD	Honours 1st	Honours 2.1	% EFD, 1.2.1	% EFD, 1.2.1	2.2	3rd	with honours	Ord Yr.4	Other Cert HE	Dip HE	Total		
<b>UNIVERSITY TOTAL</b>	126	154	400	68	64	221	42	50	396	129	54	1572	105	125	427	67	63	231	1	51	1	40	430	129	54	1600	117	98	341	57	51	276	105	1	38	318	47	1529
<b>BUILT ENVIRONMENT</b>	37	15	45	66	55	40	5	5	42	10	3	202	18	10	44	55	48	40	11	11	7	27	10	3	170	24	10	33	52	47	35	16	9	20	9	182		
Architectural Engineering	6	1	80	50	2							12	17	1	9	61	37	11	6	6	9	3	1	57	19	2	6	68	38	5	2	6	6	1	60			
Civil Engineering	31	2	7	67	31	4	3	3	7	3	1	71	17	1	23	58	47	19	1	5	13	4	2	78	5	3	17	51	46	19	6	7	13	4	74			
Construction Management & Surveying	4	16	59	59	12	1	1	1	20	3	3	69	1	4	7	41	47	10	4	4	2	5	3	35	3	10	36	36	11	10	2	7	4	48				
<b>ENGINEERING &amp; PHYSICAL SCIENCES</b>	84	11	31	63	37	40	16	17	114	46	19	378	79	7	35	57	37	58	20	15	132	46	19	411	80	6	43	56	32	48	40	15	110	14	434			
Chemical Engineering	10	2	57	18	7	2	2	2	2	2	2	27	11	1	50	8	8	2	2	2	4	2	4	32	7	2	45	15	7	3	1	1	22					
Chemistry	17	1	1	50	10	14	4	1	27	6	4	75	17	2	68	18	6	3	3	3	31	6	4	69	25	3	67	18	5	7	2	28	1	86				
Electrical, Electronic & Comp Eng	11	4	9	67	52	2	3	7	9	4	1	50	8	1	13	55	44	8	5	5	7	4	1	52	6	1	12	48	38	12	8	1	7	57				
Mechanical Engineering	22	3	14	80	63	8	1	4	2	4	2	99	15	14	49	32	22	4	4	4	4	1	6	2	108	14	5	22	60	50	14	9	2	2	110			
Physics	24	1	5	73	35	5	2	4	7	3	3	51	28	6	1	81	47	5	2	2	2	3	2	66	28	1	69	7	5	5	3	13	1	66				
Combined Studies (BSCEBEng)		2	14	14	4	4	4	4	27	25	10	76		4	20	20	9	4	3	20	9	10	84		3	15	15	5	8	4	4	42	9	93				
<b>LIFE SCIENCES</b>		20	52	67	75	58	3	11	178	28	11	510		15	67	74	74	23	3	3	49	17	6	183		13	53	56	56	36	12	4	25	5	164			
Biology	12	23	58	58	17	4	4	17	8	3	88		11	39	71	71	15	3	2	37	8	3	119		8	36	56	56	21	10	3	17	4	109				
Psychology	4	17	72	72	6	1	1	1	4	1	35		2	19	84	84	4	4	4	6	4	1	36		4	7	58	8	8	7	2	1	4	27				
Sport & Exercise Science	4	12	84	84	2	1	1	1	1	1	2	26		2	9	69	69	4	4	1	6	4	2	28		1	10	52	7	2	1	4	1	28				
<b>MANAGEMENT &amp; LANGUAGES</b>		52	169	75	75	58	3	11	178	28	11	510		42	168	76	76	52	1	5	1	8	179	28	11	495	24	128	57	57	94	16	4	116	13	430		
Accountancy & Finance	6	49	71	71	16	1	5	40	6	3	126		10	35	73	73	14	1	1	1	46	6	3	117		5	27	57	21	3	15	3	77					
Economics	4	11	79	79	4	1	9	5	33	5	33		5	16	88	88	2	1	1	5	5	5	34		5	18	64	64	13	6	1	45						
Languages	21	38	84	84	8	1	2	3	4	1	78		13	38	77	77	11	2	2	2	4	1	73		8	21	53	53	19	6	1	4	2	66				
Management	21	66	73	73	27	1	4	36	9	5	145		11	59	85	85	10	169	2	2	49	9	5	145		4	52	70	70	22	1	31	5	116				
Management (Scottish Borders Campus)											48		3	15	69	69	7	1	1	23	3	3	48		2	5	37	37	5	6	1	31	5	51				
Management (Link) Programme											34											45	1	2			5	25	25	14	1	5	2	29				
Combined Studies (BA)											22											9	1	2			5	25	25	14	1	5	2	29				
<b>MATHEMATICAL &amp; COMP SCIENCES</b>	5	33	44	62	67	35	5	10	24	21	8	185	8	35	58	73	72	28	6	6	3	19	21	8	192	13	31	50	63	60	37	12	1	5	28	1	203	
Actuarial Mathematics & Statistics	14	20	74	74	12	1	5	4	11	6	1	54		19	28	92	92	4	4	4	6	6	1	66		16	14	70	70	9	3	1	4	60				
Computer Science	5	12	15	62	57	13	3	4	18	11	81		8	7	12	64	56	12	1	2	11	11	11	66		13	5	28	66	58	19	3	2	9	1	88		
Mathematics	7	9	47	47	10	2	6	5	4	7	50		9	18	60	60	12	5	5	1	8	4	7	64		10	8	50	50	9	6	1	2	15	55			
<b>TEXTILES &amp; DESIGN</b>		23	59	72	72	23	7	2	19	7	7	147		16	55	64	64	30	6	4	4	24	7	7	149		14	34	59	59	26	7	1	19	5	116		

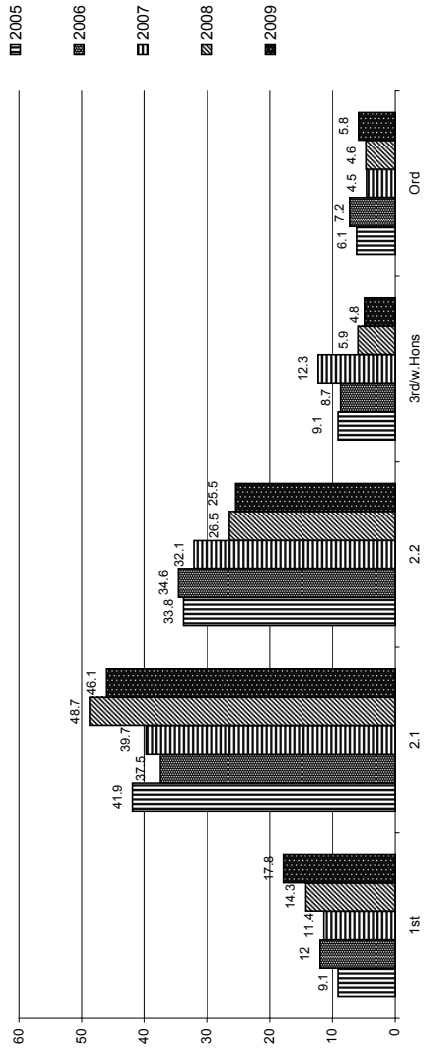
Notes: EFD = Enhanced First Degree. % EFD, 1st, 2.1 provides the percentage of combined EFD/1/2.1 degree awards against the total combined EFD and Honours (4 year) awards.

% 1.2.1 provides the percentage of combined 1st and 2.1 degree awards against the total Honours (4 year) awards.

2007 numbers for Civil Engineering include restated figures for EFDs, previously reported under 'International Programmes'

Reporting method changed from calendar year to academic year in 2009.

Classified Honours Degree Classifications 2004 - 2008 (% of total) (excludes enhanced first degrees)



FIRST DEGREES AND OTHER AWARDS (INTERNATIONAL PROGRAMMES) 2005 - 2009

SCHOOL/Programme	2009	2008	2007	2006	2005
<b>UNIVERSITY TOTAL</b>	551	596	455	344	255
<b>BUILT ENVIRONMENT</b>	422	384	254	125	103
Architectural Engineering	276				
Construction Management & Surveying	146	288	254	125	103
Urban Studies		116			
<b>MANAGEMENT &amp; LANGUAGES</b>	118	118	198	211	152
Management Programme	118	202	198	211	152
<b>MATHEMATICAL &amp; COMP SCIENCES</b>	11	9	3	8	8
Computer Science	11	9	3	8	8
<b>TEXTILES &amp; DESIGN</b>		1			

**UNDERGRADUATE STUDENT PROGRESS: 2006/07 - 2009/10**

**ALL YEARS:**

SCHOOL: Programme	2008/09 to 2009/10				2007/08 to 2008/09				2006/07 to 2007/08			
	Awarded degree/awarded or eligible for other qualification	Continuing as registered students in 2009/10	Withdrawn from the University	Total	Awarded degree/awarded or eligible for other qualification	Continuing as registered students in 2008/09	Withdrawn from the University	Total	Awarded degree/awarded or eligible for other qualification	Continuing as registered students in 2007/08	Withdrawn from the University	Total
<b>UNIVERSITY TOTAL</b>	1574	3948	299	5821	1619	3635	259	5513	1521	3628	274	5423
<b>BUILT ENVIRONMENT</b>	205	546	46	797	174	507	21	702	165	465	25	655
Architectural Engineering	12	42	5	59	80	175	10	265	72	161	12	245
Civil Engineering	71	230	13	314	60	220	7	287	54	200	10	264
Construction Management & Surveying	69	174	13	256	60	209	7	287	54	200	10	264
Urban Studies	53	100	15	168	34	112	4	150	39	104	3	146
<b>ENGINEERING &amp; PHYSICAL SCIENCES</b>	359	1017	99	1475	418	883	85	1386	434	853	73	1360
Chemical Engineering	27	152	9	188	31	118	9	158	27	102	6	135
Chemistry	69	192	13	274	71	186	18	275	81	187	12	280
Combined Studies (BSc/Eng)	60	85	11	156	79	78	12	169	95	108	10	213
Electrical, Electronic & Computer Engineering	50	136	16	202	59	127	20	206	56	121	16	193
Mechanical Engineering	100	352	46	498	110	286	18	414	117	260	27	404
Physics	53	100	4	157	68	88	8	164	58	75	2	135
<b>LIFE SCIENCES</b>	148	419	26	593	166	383	16	565	164	369	17	550
Biology	90	203	11	304	106	194	10	310	109	200	8	317
Psychology	33	100	3	136	34	91	2	127	26	93	3	122
Sport & Exercise Science	25	116	12	153	26	98	4	128	29	76	6	111
<b>MANAGEMENT &amp; LANGUAGES</b>	522	1077	74	1673	521	1047	99	1667	428	1100	118	1646
Accountancy & Finance	117	318	22	457	125	292	20	437	81	299	27	407
Combined Studies (BA)	25	14	1	40	35	26	2	63	28	31	4	63
Economics	33	132	3	168	31	121	10	162	48	107	9	164
Languages	98	202	16	316	89	223	18	330	68	220	15	303
Management Programme	171	367	21	559	141	313	19	473	105	342	32	479
Management (Scottish Borders Campus)	44	44	11	99	53	37	8	98	52	39	15	106
Management Link Programme	34	100	0	34	47	35	22	104	46	62	16	124
<b>MATHEMATICAL &amp; COMPUTER SCIENCES</b>	183	554	29	766	181	489	27	697	206	505	24	735
Actuarial Mathematics & Statistics	50	223	6	279	56	184	4	244	52	199	3	254
Computer Science	86	155	15	256	64	158	14	236	91	163	17	271
Mathematics	47	176	8	231	61	147	9	217	63	143	4	210
<b>TEXTILES &amp; DESIGN</b>	157	335	25	517	159	326	11	496	124	336	17	477
Textiles & Design	157	335	25	517	159	326	11	496	124	336	17	477

Includes full- and part-time students. Includes home students on a year abroad as part of their studies. Excludes registered incoming exchange and non-graduating students.

Withdrawal figures include those who have left the University for either academic or personal reasons.

"Other qualifications" include the Diploma and the Certificate of Higher Education.

School of the Built Environment programmes were reconfigured in 2009/10.

**UNDERGRADUATE STUDENT PROGRESS: 2007/08 - 2009/10**

**FRESHERS ONLY:**

SCHOOL: Programme	2008/09 to 2009/10				2007/08 to 2008/09				2006/07 to 2007/08				Total
	Awarded degree/awarded or eligible for other qualification	Continuing as registered students in 2009/10	Withdrawn from the University	Total	Awarded degree/awarded or eligible for other qualification	Continuing as registered students in 2007/08	Withdrawn from the University	Total	Awarded degree/awarded or eligible for other qualification	Continuing as registered students in 2007/08	Withdrawn from the University	Total	
<b>UNIVERSITY TOTAL</b>	268	1607	242	2117	273	1403	199	1875	216	1382	221	1819	
<b>BUILT ENVIRONMENT</b>	34	210	40	284	20	193	20	233	13	170	21	204	
Construction Management & Surveying	15	87	13	115	11	77	9	97	6	58	11	75	
Architectural Engineering	8	12	4	16	9	71	4	84	7	79	8	94	
Civil Engineering	11	35	11	57	0.0%	45	7	52	0.0%	33	2	35	
Urban Studies													
<b>ENGINEERING &amp; PHYSICAL SCIENCES</b>	106	402	82	590	136	331	67	534	105	340	63	508	
Chemical Engineering	1	61	6	68	2	53	9	64	0.0%	36	6	42	
Chemistry	20	71	13	104	29	63	11	103	22	79	11	112	
Combined Studies (BSc/BEng)	13	28	7	48	6	15	7	28	1	3.2%	3	31	
Electrical, Electronic & Computer Engineering	9	63	16	88	14	53	20	87	13	48	16	77	
Mechanical Engineering	33	136	37	206	39	109	13	161	31	109	25	165	
Physics	30	43	3	76	46	38	7	91	38	41	2	81	
<b>LIFE SCIENCES</b>	23	163	15	201	30	153	13	196	21	139	14	174	
Biology	21	76	7	104	26	78	8	112	19	68	6	93	
Psychology		35	1	36	2	36	2	40	2	38	3	43	
Sport & Exercise Science	2	52	7	61	2	39	3	44	0.0%	33	5	38	
<b>MANAGEMENT &amp; LANGUAGES</b>	69	457	58	584	58	414	71	543	61	411	89	561	
Accountancy & Finance	12	124	18	154	6	111	15	132	4	96	23	123	
Combined Studies (BA)	4	40.0%	1	5	6	2	0.0%	8	0.0%	1	1	2	
Economics	4	49	1	54	1	50	9	60	2	49	7	58	
Languages	1	74	12	87	5	86	16	107	0.0%	69	8	77	
Management	16	180	17	213	16	114	12	142	15	131	30	176	
Management (Scottish Borders Campus)	32	30	9	71	24	25	7	56	40	23	15	78	
Management Link													
<b>MATHEMATICAL &amp; COMPUTER SCIENCES</b>	23	221	26	270	16	170	21	207	8	214	19	241	
Actuarial Mathematics & Statistics	1	94	5	100	0.0%	56	9	60	0.0%	89	2	91	
Computer Science	20	55	14	89	15	57	9	81	7	71	14	92	
Mathematics	2	72	7	81	1	57	8	66	1	54	3	58	
<b>TEXTILES &amp; DESIGN</b>	13	154	21	188	13	142	7	162	8	108	15	131	
Textiles & Design	13	154	21	188	13	142	7	162	8	108	15	131	

Includes full- and part-time students. Includes home students on a year abroad as part of their studies. Excludes registered incoming exchange and non-graduating students.

Withdrawal figures include those who have left the University for either academic or personal reasons.

\*"Other qualifications" include the Diploma and the Certificate of Higher Education.

School of the Built Environment programmes were reconfigured in 2009/10.



HIGHER DEGREES AND OTHER AWARDS - ON-CAMPUS STUDENTS: 2007 - 2009

SCHOOL/Programme	2009							2008							2007									
	PhD	EngD	MPhil	Taught Master	PgDip	PgCert	Grad Cert/Dip	Total	PhD	EngD	MPhil	Taught Master	PgDip	PgCert	Grad Cert/Dip	Total	PhD	EngD	MPhil	Taught Master	PgDip	PgCert	Grad Cert/Dip	Total
<b>UNIVERSITY TOTAL</b>	80	1	7	859	70	51	6	1074	73	9	854	60	40	16	1052	102	10	709	202	83	39	6	1017	
<b>BUILT ENVIRONMENT</b>	16		1	234	12	15		278	13		231	11	10		285	13		202		10	6		231	
Architectural Engineering								94																
Civil Engineering	7		1	81	1	4		86																
Construction Management & Surveying	4			37	2	2		41	5		40	3	4		52	6		37		2			45	
Urban Studies	4			102	2	4		112	8		100	4	3		115	6		68		3	1		78	
Built Environment (general)	1			13	7	5		26			91	4	3		98	1		97		5	5		108	
<b>ENGINEERING &amp; PHYSICAL SCIENCES</b>	27	1	2	110	5	4		149	29	1	129	5	6		170	38	4	83		7	7		139	
Chemical Engineering	3			30	1	1		35	1		31		1		33	5		24		1	1		31	
Chemistry	5			5				10	5	1	6				12	9		7					17	
Electrical, Electronic & Computer Engineering	12		2	24	2	2		42	12		49	2	3		66	11	1	2		4	2		20	
Information Technology								0																
Mechanical Engineering	2			19	1	1		23	3		18	1	2		24	5	2	3		1	3		41	
Occupational Health & Safety																								
Physics	5	1		32	1			39	8		25	2			35	8		10			1		19	
<b>LIFE SCIENCES</b>	6			41	3	1		51	6	2	40	3			51	10	1	29		5			45	
Biology	6			41	3	1		51	6	2	40	3			51	10	1	29		5			45	
Psychology																								
<b>MANAGEMENT &amp; LANGUAGES</b>	7			221	29	6	4	267	5	1	203	23	4	11	247	4	1	174		37	4		220	
Accountancy and Finance	2			29	3	1		35	1		29	2	1		33	1		38		3	1		44	
Economics	2			4				6			5				5			3					4	
Languages	3			43	2		4	52	3		39	5	52	11	58	1		38		15	2		56	
Management				144	22	5		171	1	1	127	15	3		147	1		76		17	1		95	
Management (Scottish Borders Campus)				1	2			3			3	1			4	2		19		2			21	
<b>MATHEMATICAL &amp; COMPUTER SCIENCES</b>	15			120	15	4	2	166	14		125	13	7	5	164	21	2	101		20	8	1	155	
Actuarial Mathematics & Statistics	4			50	7			61	2		60	7			69	7		43		12			62	
Computer Science	4			60	6	4	1	75	3		55	6	7	1	72	12	2	20		2	5		41	
Information Technology																								
Mathematics	7			10	2		1	20	9	2	10	5		4	23	2	2	10		3			18	
<b>PETROLEUM ENGINEERING</b>	6		4	119	6			135	2	4	113	5			124	10	1	104		4			190	
Academic Practice	3			14		1		18	4	1	13		1		19	6	1	16			1		24	

Note: Small numbers of campus based and consortium MBA graduates are included in the external programmes Edinburgh Business School total below. The most recent year's figures are by academic year (2008/2009). Earlier figures are by calendar year.

HIGHER DEGREES AND OTHER AWARDS - INTERNATIONAL PROGRAMMES: 2007 - 2009 (\* Independent distance learners / supported learners through ALP network).

SCHOOL/Programme	2009							2008							2007													
	PhD	EngD	Taught Master	PgDip	PG Cert	Total	PhD	EngD	MPhil	Taught Master	PgDip	PG Cert	Total	PhD	EngD	MPhil	Taught Master	PgDip	PG Cert	Total	PhD	EngD	MPhil	Taught Master	PgDip	PG Cert	Total	
<b>UNIVERSITY TOTAL</b>	8	1	873	9	61	952	12	1	1	951	7	18	10	1	947	9	9	3	1	35	17							
<b>BUILT ENVIRONMENT</b>			40	1	2	43	2			55	7	4	3		37	9		1										
Architectural Eng			28		1	29																						
Civil Engineering			4			4				1					3													
Construction Management & Surveying			5	1	1	7				50	7	4	3		34	9		1										
Planning & Housing							1			2																		
Urban Planning			2			2																						
Built Environment (general)			1			1				2																		
<b>ENGINEERING &amp; PHYSICAL SCIENCES</b>	3	1	15			19	3	1	15		1	1	3	1	2													
Chemical Engineering							2		15																			
Chemistry	1		15			16	2																					
Electrical, Electronic & Computer Eng	2					2	1																					
Mechanical Engineering																												
Physics		1				1																						
<b>LIFE SCIENCES</b>	2		3	3	52	60	3		1	1		3						2										
Biology	1		3	3	1	8	2			1		3						2										
Psychology	1				51	52	1																					
<b>MANAGEMENT &amp; LANGUAGES</b>	1					1	3						2															
Accountancy & Finance							1																					
Languages							1																					
Management	1					1	1																					
<b>MATHEMATICAL &amp; COMPUTER SCIENCES</b>	1		1	2		4	1		3																			
Actuarial Mathematics & Statistics																												
Computer Science (IT)	1		1	2		4	1		3																			
Information Technology																												
<b>PETROLEUM ENGINEERING</b>			97	3	1	101			91		3	1															18	
Academic Practice	1					1																						
<b>EDINBURGH BUSINESS SCHOOL (MBA)</b>			717			717			786																			
Academic Practice				6		6							12															

The most recent year's figures are by academic year (2008/2009). Earlier figures are by calendar year.

**FIRST DESTINATIONS: 2005/06 - 2008/09**

SCHOOL/DIVISION	2008/09 (January 2010 census)										2007/08 (January 2009 census)										Graduate level employment					
	No. of Known Dest (KD)	No. in Emp	% of KD	No. in Further Study	% of KD	% in Emp/Study (note 1)	Not Available/Not Seeking	% of KD	Seeking	% of KD	Total in Emp	No. in Graduate Level/Job	% in Graduate Level/Job	Total in Emp	No. in Graduate Level/Job	% in Graduate Level/Job	Total in Emp	No. in Graduate Level/Job	% in Graduate Level/Job							
<b>UNIVERSITY TOTAL</b>	701	488	69.6	116	16.5	91.9	44	6.3	53	7.6	488	336	68.9	693	512	73.9	76	11.0	91.7	52	7.5	53	7.6	512	400	78.1
<b>BUILT ENVIRONMENT</b>	101	67	66.3	11	10.9	83.9	8	7.9	15	14.9	67	49	73.1	96	76	79.2	6	6.3	95.3	10	10.4	4	4.2	76	67	88.2
Building	35	23	65.7	5	14.3	84.8	2	5.7	5	14.3	23	16	69.6	49	31	63.3	6	12.2	90.2	8	16.3	4	8.2	31	28	90.3
Civil Engineering	41	28	68.3	4	9.8	82.1	2	4.9	7	17.1	28	22	78.6	34	32	94.1		100.0		2	5.9			32	28	87.5
Urban Studies	25	16	64.0	2	8.0	85.7	4	16.0	3	12.0	16	11	68.8	13	13	100.0		100.0						13	11	84.6
<b>LIFE SCIENCES</b>	74	49	66.2	14	18.9	90.0	4	5.4	7	9.5	49	25	51.0	86	52	60.5	18	20.9	88.6	7	8.1	9	10.5	52	30	57.7
Biological Sciences	41	26	63.4	8	19.5	87.2	2	4.9	5	12.2	26	17	65.4	51	33	64.7	11	21.6	93.6	4	7.8	3	5.9	33	20	60.6
Psychology	18	13	72.2	3	16.7	88.9			2	11.1	13	3	23.1	21	13	61.9	3	14.3	80.0	1	4.8	4	19.0	13	6	46.2
Sport & Exercise Science	15	10	66.7	3	20.0	100.0	2	13.3			10	5	50.0	14	6	42.9	4	28.6	83.3	2	14.3	2	14.3	6	4	66.7
<b>ENGINEERING &amp; PHYSICAL SCIENCES</b>	154	95	61.7	41	26.6	91.9	6	3.9	12	7.8	95	74	77.9	133	85	63.9	23	17.3	85.0	6	4.5	19	14.3	85	70	82.4
Chemical Engineering	17	16	94.1			94.1			1	5.9	16	14	87.5	20	15	75.0	1	5.0	84.2	1	5.0	3	15.0	15	13	86.7
Chemistry	40	17	42.5	19	47.5	92.3	1	2.5	3	7.5	17	14	82.4	19	8	42.1	9	47.4	89.5			2	10.5	8	7	87.5
Mechanical Engineering	40	28	70.0	7	17.5	89.7	1	2.5	4	10.0	28	23	82.1	43	30	69.8	4	9.3	85.0	3	7.0	6	14.0	30	27	90.0
Physics	18	8	44.4	6	33.3	82.4	1	5.6	3	16.7	8	5	62.5	13	6	46.2	4	30.8	83.3	1	7.7	2	15.4	6	6	100.0
Electrical, Electronic & Computer Engineering	25	19	76.0	4	16.0	100.0	2	8.0			19	15	78.9	20	13	65.0	3	15.0	84.2	1	5.0	3	15.0	13	10	76.9
Combined Studies	14	7	50.0	5	35.7	92.3	1	7.1	1	7.1	7	3	42.9	18	13	72.2	2	11.1	83.3			3	16.7	13	7	53.8
<b>MANAGEMENT &amp; LANGUAGES</b>	186	148	79.6	17	9.1	94.3	11	5.9	10	5.4	148	100	67.6	182	140	76.9	15	8.2	92.3	14	7.7	13	7.1	140	99	70.7
Accountancy & Finance	49	41	83.7	2	4.1	95.6	4	8.2	2	4.1	41	27	65.9	46	39	84.8			90.7	3	6.5	4	8.7	39	29	74.4
Economics	13	7	53.8	4	30.8	91.7	1	7.7	1	7.7	7	3	42.9	16	13	81.3	2	12.5	100.0	1	6.3			13	10	76.9
Management	72	57	79.2	8	11.1	95.6	4	5.6	3	4.2	57	39	68.4	57	41	71.9	6	10.5	95.9	8	14.0	2	3.5	41	28	68.3
Management (Scottish Borders Campus)	5	5	100.0								5	3	60.0	12	9	75.0	3	25.0	100.0					9	7	77.8
Languages	40	34	85.0	3	7.5	94.9	1	2.5	2	5.0	34	25	73.5	42	31	73.8	4	9.5	85.4	1	2.4	6	14.3	31	21	67.7
Combined Studies	7	4	57.1			66.7	1	14.3	2	28.6	4	3	75.0	9	7	77.8			87.5	1	11.1	1	11.1	7	4	57.1
<b>MATHEMATICAL &amp; COMPUTER SCIENCES</b>	83	53	63.9	20	24.1	93.6	5	6.0	5	6.0	53	31	58.5	91	74	81.3	8	8.8	93.2	3	3.3	6	6.6	74	59	79.7
Actuarial Mathematics & Statistics	26	18	69.2	5			3	11.5			18	15	83.3	24	23	95.8			100.0	1	4.2			23	22	95.7
Computer Science	28	19	67.9	7	25.0	92.9			2	7.1	19	8	42.1	31	23	74.2	3	9.7	86.7	1	3.2	4	12.9	23	17	73.9
Mathematics	29	16	55.2	8	27.6	88.9	2	6.9	3	10.3	16	8	50.0	36	28	77.8	5	13.9	94.3	1	2.8	2	5.6	28	20	71.4
<b>TEXTILES &amp; DESIGN</b>	103	76	73.8	13	12.6	95.7	10	9.7	4	3.9	76	57.0	75.0	105	85	81.0	6	5.7	97.8	12	11.4	2	1.9	85	75.0	88.2
Textiles	103	76	73.8	13	12.6	95.7	10	9.7	4	3.9	76	57	75.0	105	85	81.0	6	5.7	97.8	12	11.4	2	1.9	85	75	88.2

The census date for graduate first destinations is 6 months following graduation  
 'Employed' includes those due to start employment within the next month. 'Other' includes those who are not available for employment because of travel, family commitments, health or other reasons

Note 1: This is the percentage of those in employment and/or further study as against the aggregated total who are in employment and/or further study or reported as 'seeking'

Note 2: Graduate Employment is based on the SOC 2000 classification of occupations for studying the graduate labour market (Institute for Employment Research, Warwick)

SCHOOL/DIVISION	2006/07 (January 2008 census)										2005/06 (January 2007 census)												
	No. of Known Dest. (KD)	No. in Emp	% of KD	No. in Further Study	% of KD	% in Emp/Study (note 1)	Not Available/Not Seeking	% of KD Seeking	Total in Emp	% in Graduate Level/Job (note 2)	No. of Known Dest. (KD)	No. in Emp	% of KD	No. in Further Study	% of KD	% in Emp/Study (note 1)	Not Available/Not Seeking	% of KD Seeking	Total in Emp	% in Graduate Level/Job (note 2)			
<b>UNIVERSITY TOTAL</b>	772	601	77.8	80	10.4	94.8	54	7.0	37	4.8	836	611	73.1	120	14.4	94.3	61	7.3	44	5.3	611	458	75.0
<b>BUILT ENVIRONMENT</b>	107	88	82.2	3	2.8	94.8	11	10.3	5	4.7	105	85	81.0	3	2.9	93.6	11	10.5	6	5.7	85	78	91.8
Building	43	33	76.7	1	2.3	97.1	8	18.6	1	2.3	54	41	75.9	1	1.9	91.3	8	14.8	4	7.4	41	37	90.2
Civil Engineering	39	35	89.7	2	5.1	94.9			2	5.1	46	39	84.8	2	4.3	95.3	3	6.5	2	4.3	39	37	94.9
Urban Studies	25	20	80.0			90.9	3	12.0	2	8.0	5	5	100.0			100.0					5	4	80.0
<b>LIFE SCIENCES</b>	93	66	71.0	14	15.1	92.0	6	6.5	7	7.5	90	52	57.8	22	24.4	91.4	9	10.0	7	7.8	52	24	46.2
Biological Sciences	59	42	71.2	9	15.3	91.1	3	5.1	5	8.5	67	37	55.2	18	26.9	94.8	9	13.4	3	4.5	37	22	59.5
Psychology	16	11	68.8	1	6.3	85.7	2	12.5	2	12.5	11	3	27.3										
Sport & Exercise Science	18	13	72.2	4	22.2	100.0	1	5.6			13	6	46.2								15	2	13.3
<b>ENGINEERING &amp; PHYSICAL SCIENCES</b>	183	126	68.9	35	19.1	93.1	10	5.5	12	6.6	173	101	58.4	49	28.3	94.3	14	8.1	9	5.2	101	81	80.2
Chemical Engineering	18	15	83.3	2	11.1	94.4			1	5.6	15	14	93.3								17	13	76.5
Chemistry	44	18	40.9	20	45.5	95.0	4	9.1	2	4.5	38	13	34.2	21	55.3	94.4	1	2.6	2	5.3	13	11	84.6
Mechanical Engineering	55	41	74.5	3	5.5	86.3	4	7.3	7	12.7	32	22	68.8	4	12.5	96.3	5	15.6	1	3.1	22	20	90.9
Physics	14	11	78.6	2	14.3	92.9			1	7.1	11	6	54.5								6	5	83.3
Electrical, Electronic & Computer Engineering	23	16	69.6	7	30.4	100.0					43	32	74.4	5	11.6	92.5	2	4.7	3	7.0	32	27	84.4
Combined Studies	29	25	86.2	1	3.4	96.3	2	6.9	1	3.4	19	11	57.9	4	21.1	93.8	3	15.8	1	5.3	11	5	45.5
<b>MANAGEMENT &amp; LANGUAGES</b>	193	162	83.9	11	5.7	96.6	14	7.3	6	3.1	231	182	78.8	23	10.0	95.3	16	6.9	10	4.3	182	133	73.1
Accountancy & Finance	41	33	80.5	1	2.4	97.1	6	14.6	1	2.4	57	50	87.7	2	3.5	100.0	5	8.8			50	37	74.0
Economics	30	25	83.3	2	6.7	93.1	1	3.3	2	6.7	24	19	79.2	2	8.3	95.5	2	8.3	1	4.2	19	15	78.9
Management	61	56	91.8	2	3.3	100.0	3	4.9			74	60	81.1	6	8.1	98.5	7	9.5	1	1.4	60	41	68.3
Management (Scottish Borders Campus)	9	9	100.0			100.0					15	5	33.3	9	60.0	100.0	1	6.7			5	4	80.0
Languages	38	28	73.7	4	10.5	91.4	3	7.9	3	7.9	46	37	80.4	4	8.7	91.1	1	2.2	4	8.7	37	28	75.7
Combined Studies	14	11	78.6	2	14.3	100.0	1	7.1			15	11	73.3								11	8	72.7
<b>MATHEMATICAL &amp; COMPUTER SCIENCES</b>	115	93	80.9	9	7.8	94.4	7	6.1	6	5.2	147	112	76.2	16	10.9	92.8	9	6.1	10	6.8	112	84	75.0
Actuarial Mathematics & Statistics	20	18	90.0	1	5.0	100.0	1	5.0			51	46	90.2	2	3.9	98.0	2	3.9	1	2.0	46	39	84.8
Computer Science	55	42	76.4	5	9.1	92.2	4	7.3	4	7.3	58	38	65.5	7	12.1	86.5	6	10.3	7	12.1	38	29	76.3
Mathematics	40	33	82.5	3	7.5	94.7	2	5.0	2	5.0	38	28	73.7	7	18.4	94.6	1	2.6	2	5.3	28	16	57.1
<b>TEXTILES &amp; DESIGN</b>	81	66	81.5	8	9.9	98.7	6	7.4	1	1.2	90	79	87.8	7	7.8	97.7	2	2.2	2	2.2	79	58	73.4
Textiles	81	66	81.5	8	9.9	98.7	6	7.4	1	1.2	66	54	81.8								66	54	81.8

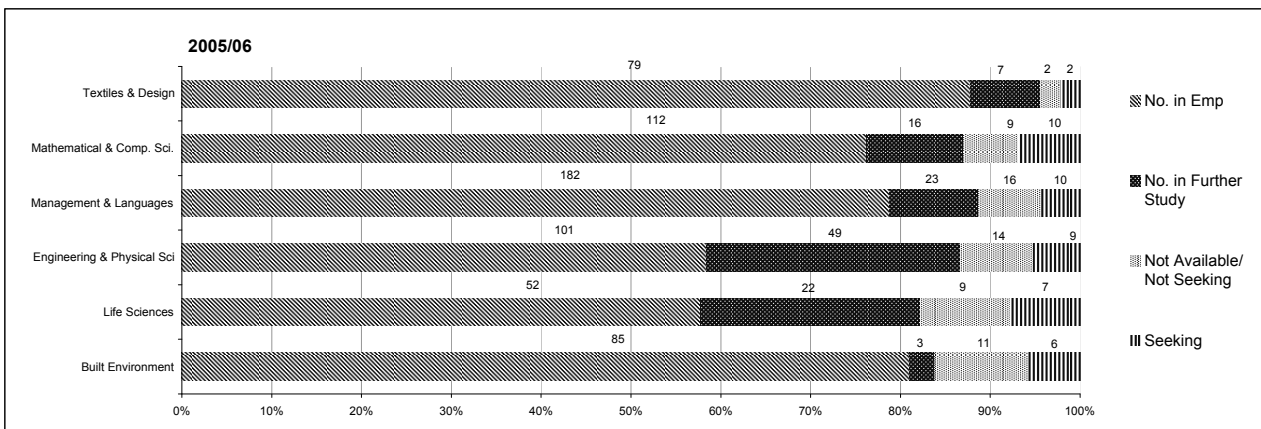
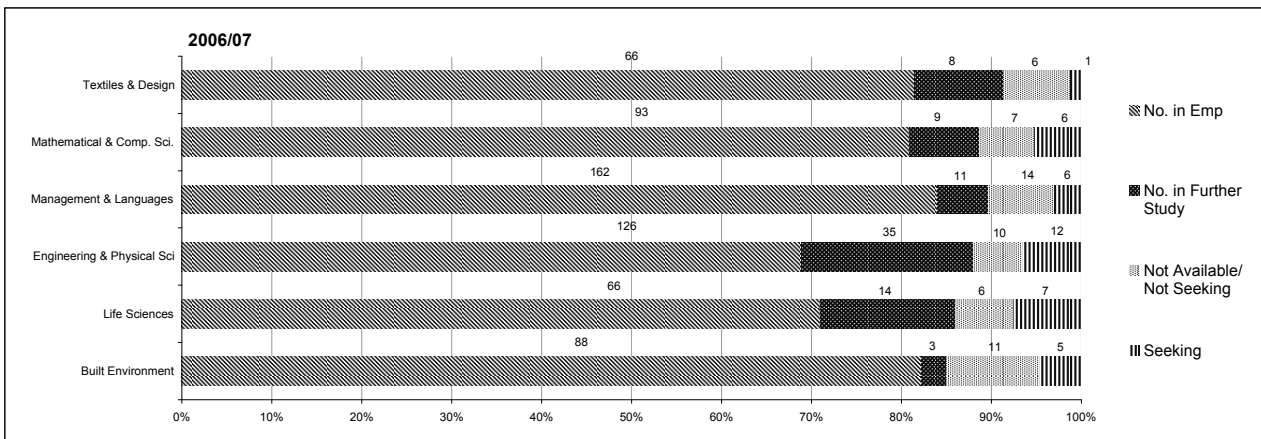
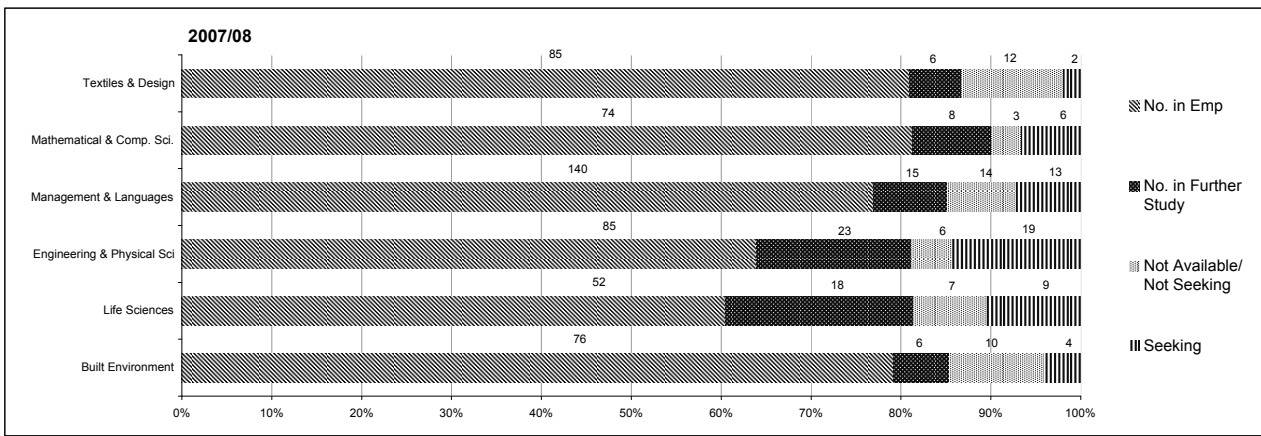
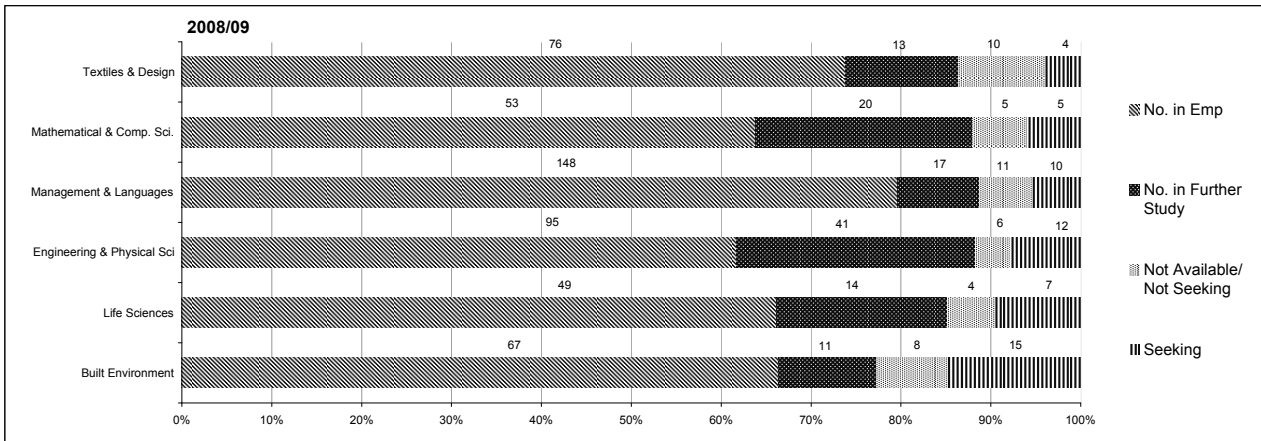
The census date for graduate first destinations is 6 months following graduation

'Employed' includes those due to start employment within the next month. 'Other' includes those who are not available for employment because of travel, family commitments, health or other reasons

Note 1: This is the percentage of those in employment and/or further study as against the aggregated total who are in employment and/or further study or reported as 'seeking'

Note 2: Graduate Employment is based on the SOC 2000 classification of occupations for studying the graduate labour market (Institute for Employment Research, Warwick)

**FIRST DESTINATIONS: FIRST DEGREE GRADUATES: 2005/06 - 2008/09**



National Student Survey (NSS) Results by School: 2008-2010

	% Agree	Average (22 Questions)																													
		1. Staff are good at explaining things.	2. Staff have made the subject interesting.	3. Staff are enthusiastic about what they are teaching.	4. The course is intellectually stimulating.	5. The criteria used in marking have been clear in advance.	6. Assessment arrangements and marking have been fair.	7. Feedback on my work has been prompt.	8. I have received detailed comments on my work.	9. Feedback on my work has helped me clarify things I did not understand.	10. I have received sufficient advice and support with my studies.	11. I have been able to contact staff when I needed to.	12. Good advice was available when I needed to make study choices.	13. The timetable works efficiently as far as my activities are concerned.	14. Any changes in the course or teaching have been communicated effectively.	15. The course is well organised and is running smoothly.	16. The library resources and services are good enough for my needs.	17. I have been able to access specialised equipment, facilities or rooms when I needed to.	18. I have been able to access general IT resources when I needed to.	19. The course has helped me to present myself with confidence.	20. My communication skills have improved.	21. As a result of the course, I feel confident in tackling unfamiliar problems.	Overall Satisfaction								
<b>UNIVERSITY AVER. ALL SUBJECTS 2010</b>		78	86	72	77	77	52	62	70	43	36	48	74	74	85	63	71	80	70	64	77	73	84	73	77	73	81	76	81	70	
UNIVERSITY AVER. ALL SUBJECTS 2009		81	87	73	81	82	59	69	76	51	43	54	77	75	84	71	78	81	76	76	76	75	79	73	81	76	75	79	73	85	74
UNIVERSITY AVER. ALL SUBJECTS 2008		86	97	81	84	81	71	86	86	49	49	86	73	81	78	58	86	89	78	89	87	86	95	79	79	83	76	78	92	80	
<b>LIFE SCIENCES</b>																															
Biology (Bio Sci, Applied Marine Bio courses)	2010	86	97	81	84	81	71	86	86	49	49	86	73	81	78	58	86	89	78	89	87	86	95	79	79	83	76	78	92	80	
	2009	91	94	85	97	91	59	57	69	46	54	67	89	88	97	81	97	99	99	94	78	81	80	72	84	81	94	77	97	82	
	2008	89	96	85	89	85	57	56	74	56	48	54	86	74	100	85	89	93	93	81	85	81	85	88	72	78	78	59	85	78	
Psychology	2010	95	97	89	100	92	77	88	86	60	72	77	88	86	60	72	88	88	83	82	92	95	88	92	72	72	73	72	87	70	
	2009	82	86	78	82	81	51	64	57	43	38	51	73	65	92	62	84	86	85	80	61	49	63	70	72	72	72	73	72	87	70
	2008	96	100	95	95	95	72	84	85	65	60	66	89	95	94	79	91	100	89	85	80	71	90	78	79	81	85	71	95	84	
Sports Science *	2010	84	100	67	91	80	58	68	62	58	46	57	83	75	100	74	66	68	75	55	68	64	68	71	72	71	83	62	70	71	
	2009/8	81	91	73	85	75	48	71	76	30	28	33	66	66	90	43	75	78	80	67	68	56	66	82	79	57	85	78	66	68	
<b>MANAGEMENT &amp; LANGUAGES</b>																															
Accounting & Finance	2010	87	94	82	82	90	55	81	79	46	39	31	74	74	78	69	70	77	57	77	70	81	62	67	86	84	90	86	73		
	2009	79	87	70	79	81	65	74	76	63	58	54	76	73	85	71	81	80	81	82	84	85	88	81	79	78	80	78	86	77	
	2008	80	90	67	82	82	56	59	77	46	55	42	69	61	82	67	87	90	88	88	65	63	80	53	72	67	78	68	88	72	
Economics *	2010	90	100	77	90	94	72	77	94	61	61	68	88	97	84	84	92	87	97	94	82	84	81	81	85	94	94	97	100	86	
	2009/8	78	79	66	84	82	51	50	75	40	49	39	67	68	75	57	71	70	74	68	73	77	77	65	65	59	74	61	73	66	
Others in European Languages and Area Studies	2010	94	97	94	94	91	62	91	64	36	67	55	81	82	88	74	74	91	64	67	53	39	55	66	95	94	97	94	77	77	
	2009	83	86	81	78	86	61	71	66	58	52	58	79	78	93	66	70	88	64	59	80	71	88	80	86	81	93	86	82	76	
	2008	95	97	91	97	97	83	87	90	78	77	83	86	82	97	81	85	87	80	87	86	81	88	89	89	87	93	85	96	88	
Management Studies	2010	86	95	83	92	74	58	72	79	47	42	48	81	82	90	70	86	88	90	80	65	68	62	64	84	83	91	80	94	76	
	2009	81	90	80	78	76	51	68	78	36	29	42	69	63	84	60	70	78	72	60	75	74	82	69	86	77	92	88	88	71	
	2008	80	91	73	82	74	60	78	73	53	42	52	72	71	87	58	81	87	73	82	66	71	63	65	76	76	80	72	86	72	
Business Studies (IBL, BBA, International Man., Management SBC)	2010	91	100	87	87	89	63	74	65	60	65	52	76	69	89	71	72	74	76	67	60	60	54	67	94	89	94	99	96	77	
	2009	73	79	68	82	63	41	43	55	26	39	41	69	64	79	63	62	78	65	44	79	90	77	71	72	70	80	66	63	64	
	2008	79	91	74	82	68	56	69	72	56	38	45	79	74	92	70	76	79	77	71	57	60	61	49	84	84	88	80	78	71	
<b>BUILT ENVIRONMENT</b>																															
Building (Construction Mgt & Surveying)	2010	77	88	70	79	73	51	82	64	42	24	42	71	73	70	70	61	85	64	33	86	94	82	83	82	88	76	85	70		
	2009	49	55	55	45	41	31	59	45	10	14	26	56	55	64	50	54	76	48	38	79	86	90	61	69	66	66	76	55	54	
	2008	70	79	58	74	71	53	79	66	43	37	39	68	79	66	61	69	66	74	68	84	89	92	70	65	65	68	62	66	67	
Civil Engineering (Civil Eng, Energy-related courses)	2010	88	96	88	80	88	62	69	82	62	46	53	89	91	85	91	89	85	91	89	85	92	89	93	97	96	87	96	84	76	
	2009	84	91	77	81	88	58	64	77	50	44	52	74	83	81	56	77	85	70	76	87	85	95	80	79	73	83	82	95	76	
	2008	73	75	63	73	82	44	57	64	37	18	41	75	75	86	64	76	88	68	71	88	91	87	85	78	81	71	81	70	60	
Planning (Urban, Rural and Regional) (Urban Stud/Estate Man.)*	2010	62	65	46	54	81	46	65	35	27	54	50	61	46	88	48	62	85	58	42	71	65	85	61	73	62	73	85	54	60	
	2009/8	66	83	58	50	73	38	55	55	20	23	35	60	58	78	48	70	82	65	63	66	48	85	65	76	78	80	70	65	61	

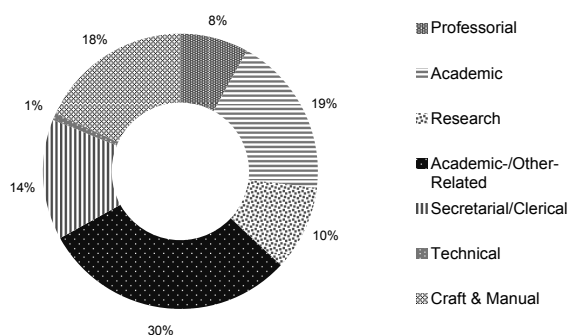
\* There was an insufficient number of respondents in this subject area to meet the threshold for publication of 2009 results. The figures shown are an aggregation of 2008 and 2009 results as published by Unistats (www.unistats.com)



## STAFF: 2009

### ALL STAFF BY CONTRACT TYPE: AT END DECEMBER 2009

GRADE RANGE	F-T / P-T	Gender	No.	% of category	% of all staff
<b>University Total</b>			<b>1666</b>		
<b>Professional</b>					
	FT	F	10	7.8	0.6
		M	102	79.7	6.1
	PT	F	0	0.0	0.0
		M	16	12.5	1.0
			<b>316</b>	<b>100.0</b>	<b>19.0</b>
<b>Academic (non-professional)</b>					
	FT	F	71	22.5	4.3
		M	191	60.4	11.5
	PT	F	25	7.9	1.5
		M	29	9.2	1.7
			<b>276</b>	<b>100.0</b>	<b>16.5</b>
<b>Research</b>					
	FT	F	27	15.6	1.6
		M	121	69.9	7.3
	PT	F	8	4.6	0.5
		M	17	9.8	1.0
			<b>173</b>	<b>100.0</b>	<b>10.4</b>
<b>Acad-/Other-Related</b>					
	FT	F	192	38.1	11.5
		M	241	47.8	14.5
	PT	F	60	11.9	3.6
		M	11	2.2	0.7
			<b>504</b>	<b>100.0</b>	<b>30.3</b>
<b>Secretarial/Clerical</b>					
	FT	F	126	53.4	7.6
		M	17	7.2	1.0
	PT	F	88	37.3	5.3
		M	5	2.1	0.3
			<b>236</b>	<b>100.0</b>	<b>14.2</b>
<b>Technical</b>					
	FT	F	2	8.7	0.1
		M	18	78.3	1.1
	PT	F	2	8.7	0.1
		M	1	4.3	0.1
			<b>23</b>	<b>100.0</b>	<b>1.4</b>
<b>Craft</b>					
	FT	M	26	96.3	1.6
	PT	M	1	3.7	0.1
			<b>27</b>	<b>100</b>	<b>1.6</b>
<b>Manual</b>					
	FT	F	53	20.5	3.2
		M	84	32.4	5.0
	PT	F	105	40.5	6.3
		M	17	6.6	1.0

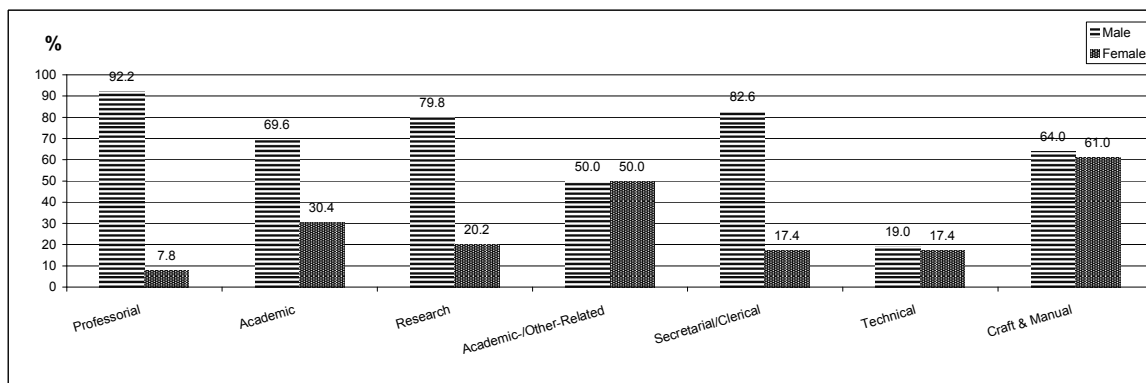


### STAFF LEAVERS: 1 JAN - 31 DEC 2009

	Total	Permanent	Fixed Term	% leavers
<b>Total</b>	<b>302</b>	<b>145</b>	<b>157</b>	
Professional	12	8	4	4.0
Academic (non-professional)	43	30	13	14.2
Research	57	1	56	18.9
Academic-/Other-Related	84	50	34	27.8
Secretarial/Clerical	48	15	33	15.9
Technical	8	6	2	2.6
Craft & Manual	40	28	12	13.2
Edinburgh Business School	5	4	1	1.7
Dubai	5	3	2	1.7

### STAFF NEW STARTS: 1 JAN - 31 DEC 2009

	Total	Permanent	Fixed Term	% of starts
<b>Total</b>	<b>241</b>	<b>59</b>	<b>182</b>	
Professional	6	4	2	2.5
Academic (non-professional)	25	11	14	10.4
Research	57	1	56	23.7
Academic-/Other-Related	71	16	55	29.5
Secretarial/Clerical	49	15	34	20.3
Technical	3	1	2	1.2
Craft & Manual	14	2	12	5.8
Edinburgh Business School	5	1	4	2.1
Dubai Campus	11	10	1	4.6



### ETHNICITY OF STAFF BY GRADE RANGE AND PERCENTAGE: DECEMBER 2009

GRADE RANGE	White	Black/Black British	Asian/ Asian British	Chinese	Other Asian	Other mixed background	Other ethnic background	Not known or info refused
<b>UNIVERSITY % OF TOTAL</b>	<b>78.1</b>	<b>0.6</b>	<b>1.7</b>	<b>2.9</b>	<b>0.8</b>	<b>0.2</b>	<b>0.9</b>	<b>14.6</b>
Academic (all)	18.7	0.2	0.4	1.3	0.4		0.4	3.8
Research	5.8		0.5	1.1	0.2		0.3	2.4
Academic-/Other-Related	24.1		0.2	0.1	0.1			4.2
Secretarial/Clerical	11.9		0.2	0.1				0.5
Technical	0.9							0.3
Craft & Manual	13.5	0.4	0.1	0.4	0.1	0.1		2.1
EBS	2.8			0.1				0.4
Dubai	0.4	0.1	0.3		0.1	0.1	0.2	1.1

Black/Black British includes African and Caribbean origin

Asian/Asian British includes Indian, Bangladeshi and Pakistani origin

Percentages are an expression of the proportion of the group against total staff population

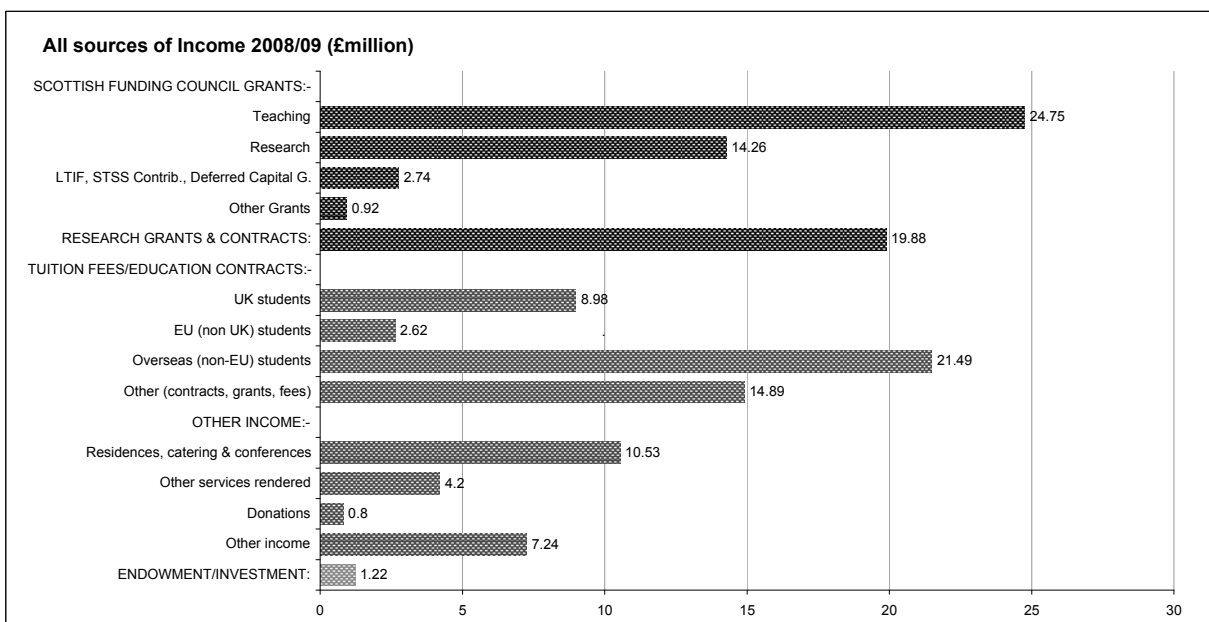
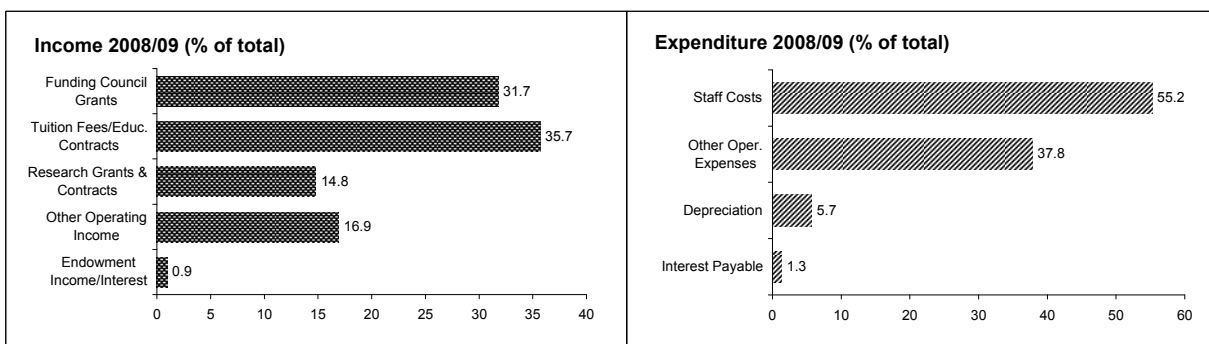
## INCOME & EXPENDITURE 2004/05 - 2008/09

### INCOME

	2008/09 £ m	% change	2007/08 £ m	% change	2006/07 £ m	% change	2005/06 £ m	% change	2004/05 £ m	% change
	% of tot.	yr/yr	% of tot.	yr/yr	% of tot.	yr/yr	% of tot.	yr/yr	% of tot.	yr/yr
<b>Funding Council Grants</b>	<b>42.67</b>	<b>3.4</b>	<b>41.26</b>	<b>5.6</b>	<b>39.08</b>	<b>9.9</b>	<b>35.55</b>	<b>4.8</b>	<b>33.93</b>	<b>1.4</b>
	31.7		35.0		35.3		35.7		35.9	
<b>Tuition Fees/Educ. Contracts</b>	<b>47.97</b>	<b>26.8</b>	<b>37.82</b>	<b>13.3</b>	<b>33.38</b>	<b>17.2</b>	<b>28.48</b>	<b>18.3</b>	<b>24.07</b>	<b>15.4</b>
	35.7		32.1		30.2		28.6		25.4	
<b>Research Grants &amp; Contracts</b>	<b>19.88</b>	<b>28.9</b>	<b>15.42</b>	<b>-0.5</b>	<b>15.49</b>	<b>2.4</b>	<b>15.12</b>	<b>0.4</b>	<b>15.06</b>	<b>1.0</b>
	14.8		13.1		14.0		15.2		15.9	
<b>Other Operating Income</b>	<b>22.76</b>	<b>7.0</b>	<b>21.27</b>	<b>1.4</b>	<b>20.98</b>	<b>8.0</b>	<b>19.42</b>	<b>-6.6</b>	<b>20.79</b>	<b>-1.9</b>
	16.9		18.1		19.0		19.5		22.0	
<b>Endowment Income/Interest</b>	<b>1.22</b>	<b>-40.5</b>	<b>2.05</b>	<b>25.8</b>	<b>1.63</b>	<b>66.3</b>	<b>0.98</b>	<b>24.1</b>	<b>0.79</b>	<b>41.1</b>
	0.9		1.7		1.5		1.0		0.8	
<b>Total</b>	<b>134.50</b>	<b>14.2</b>	<b>117.82</b>	<b>6.6</b>	<b>110.56</b>	<b>11.1</b>	<b>99.55</b>	<b>5.2</b>	<b>94.64</b>	<b>4.0</b>

### EXPENDITURE

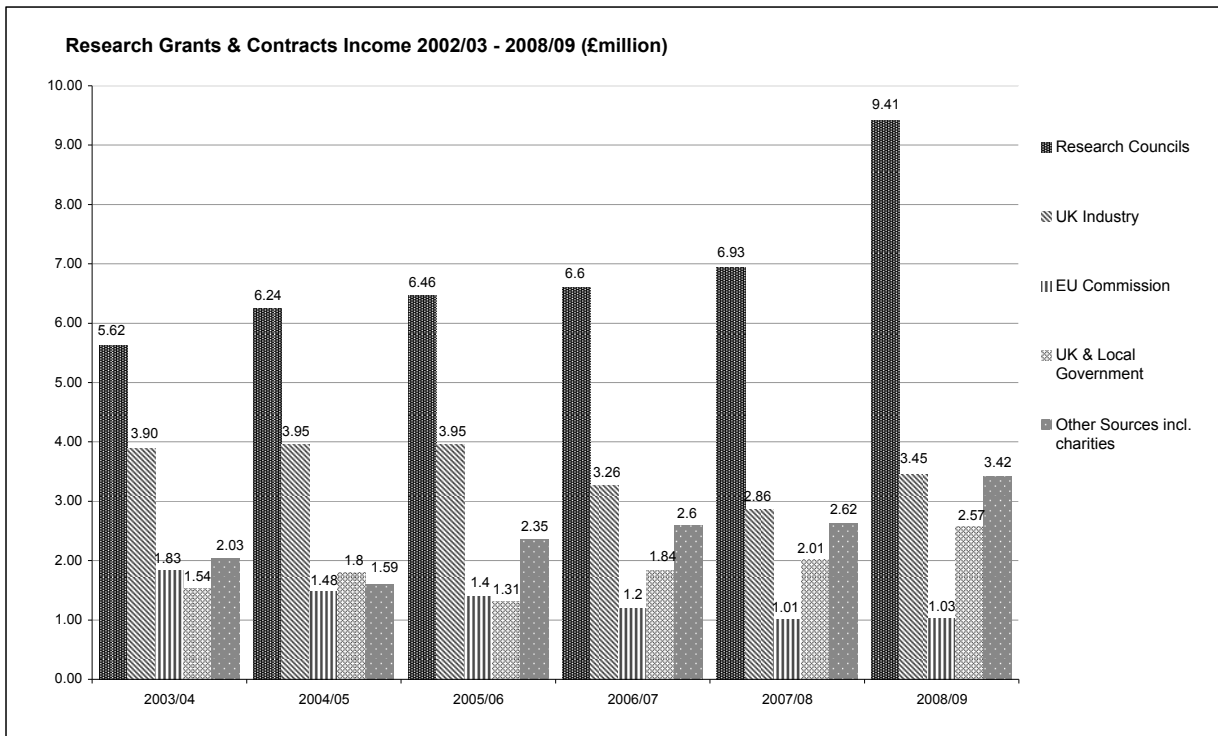
	2008/09 £ m	% change	2007/08 £ m	% change	2006/07 £ m	% change	2005/06 £ m	% change	2004/05 £ m	% change
	% of tot.	yr/yr	% of tot.	yr/yr	% of tot.	yr/yr	% of tot.	yr/yr	% of tot.	yr/yr
<b>Staff Costs</b>	<b>73.44</b>	<b>10.7</b>	<b>66.32</b>	<b>6.9</b>	<b>62.02</b>	<b>9.2</b>	<b>56.80</b>	<b>5.5</b>	<b>53.82</b>	<b>4.2</b>
	55.2		57.0		57.4		57.8		58.0	
<b>Other Operating Expenses</b>	<b>50.35</b>	<b>17.3</b>	<b>42.93</b>	<b>8.5</b>	<b>39.58</b>	<b>11.1</b>	<b>35.64</b>	<b>7.0</b>	<b>33.30</b>	<b>5.4</b>
	37.8		36.9		36.6		36.3		35.9	
<b>Depreciation</b>	<b>7.53</b>	<b>46.0</b>	<b>5.16</b>	<b>3.8</b>	<b>4.97</b>	<b>16.4</b>	<b>4.27</b>	<b>3.6</b>	<b>4.12</b>	<b>-12.5</b>
	5.7		4.4		4.6		4.3		4.4	
<b>Interest Payable</b>	<b>1.75</b>	<b>-7.4</b>	<b>1.89</b>	<b>21.9</b>	<b>1.55</b>	<b>-2.5</b>	<b>1.59</b>	<b>1.3</b>	<b>1.57</b>	<b>-5.9</b>
	1.3		1.6		1.4		1.6		1.7	
<b>Total</b>	<b>133.07</b>	<b>14.4</b>	<b>116.30</b>	<b>7.6</b>	<b>108.12</b>	<b>10.0</b>	<b>98.30</b>	<b>5.9</b>	<b>92.81</b>	<b>3.5</b>





**RESEARCH GRANTS & CONTRACTS INCOME: 2004/05 - 2008/09 (HWU Annual Accounts)**

	2008/09	%	2007/08	%	2006/07	%	2005/06	%	2004/05	%
	£ m	change	£ m	change	£ m	change	£ m	change	£ m	change
	% of tot.	yr/yr	% of tot.	yr/yr	% of tot.	yr/yr	% of tot.	yr/yr	% of tot.	yr/yr
<b>Research Councils</b>	<b>9.41</b>	<b>35.8</b>	<b>6.93</b>	<b>5.2</b>	<b>6.59</b>	<b>2.0</b>	<b>6.46</b>	<b>3.5</b>	<b>6.24</b>	<b>11.0</b>
	47.3		44.9		42.5		42.7		41.4	
<b>UK &amp; Local Government</b>	<b>2.57</b>	<b>28.5</b>	<b>2.00</b>	<b>8.7</b>	<b>1.84</b>	<b>40.5</b>	<b>1.31</b>	<b>-27.2</b>	<b>1.80</b>	<b>17.3</b>
	12.9		13.0		11.9		8.7		12.0	
<b>UK Industry</b>	<b>3.45</b>	<b>20.6</b>	<b>2.86</b>	<b>-12.3</b>	<b>3.26</b>	<b>-9.4</b>	<b>3.60</b>	<b>-8.9</b>	<b>3.95</b>	<b>1.4</b>
	17.4		18.5		21.0		23.8		26.2	
<b>EU Commission</b>	<b>1.03</b>	<b>2.0</b>	<b>1.01</b>	<b>-15.8</b>	<b>1.20</b>	<b>-14.3</b>	<b>1.40</b>	<b>-5.4</b>	<b>1.48</b>	<b>-19.2</b>
	5.2		6.5		7.7		9.3		9.8	
<b>Other Sources incl. charities</b>	<b>3.42</b>	<b>30.5</b>	<b>2.62</b>	<b>0.8</b>	<b>2.60</b>	<b>10.6</b>	<b>2.35</b>	<b>47.8</b>	<b>1.59</b>	<b>-21.7</b>
	17.2		17.0		16.8		15.5		10.6	
<b>Total</b>	<b>19.88</b>	<b>28.9</b>	<b>15.42</b>	<b>-0.5</b>	<b>15.49</b>	<b>2.4</b>	<b>15.12</b>	<b>0.4</b>	<b>15.06</b>	<b>1.0</b>



## RESEARCH AND TEACHING QUALITY

### 2008 Research Assessment Exercise Results

	Overall quality profile % activity at each quality level					
	Vol	4*	3*	2*	1*	u/c
Food Science & Technology	12.7	5	35	35	25	0
Environmental Science <sup>1</sup>	10.9	0	25	55	20	0
Chemistry	19	10	40	50	0	0
Physics	19.5	15	40	40	5	0
Pure Mathematics <sup>1</sup>	10	25	45	30	0	0
Applied Mathematics	18.5	15	50	30	5	0
Statistics & Operational Research	19	10	35	45	10	0
Computer Science & Informatics	20.1	15	45	30	10	0
Mineral & Mining Engineering <sup>2</sup>	27.5	20	45	30	5	0
General Engineering <sup>3</sup>	45.8	10	45	40	5	0
Mechanical Engineering <sup>4</sup>						
Electrical & Electronic Engineering <sup>4</sup>						
Chemical Engineering	11.4	10	35	40	15	0
Civil Engineering	18	5	50	35	10	0
Architecture & the Built Environment	25.4	10	50	30	10	0
Town & Country Planning	13.8	20	30	35	10	5
Business & Management Studies	36.2	10	35	40	15	0
Psychology <sup>1</sup>	9.2	0	5	30	65	0
Sports Related Studies <sup>1</sup>	8.2	10	15	35	30	10
European Studies	13.2	10	20	40	30	0
Art & Design	10.6	15	35	20	15	15

<sup>1</sup> New subject; <sup>2</sup> In 2001 = Petroleum Engineering; <sup>3</sup> in 2001 = Mechanical Engineering/ Electrical & Electronic Engineering; <sup>4</sup> in 2008 = General Engineering

Key to "staff submitted": A = 95-100%, B = 80 – 94.9%, C = 60 – 79.9%, D = 40 – 59.9%, E = 20 – 39.9%, F = Below 20%. There were 320 (83% of academic staff) "research active" in 2001. In the 2008 RAE there were 367 staff submitted (90% of academic staff)

4\* = research quality that is *world-leading*; 3\* = quality that is *internationally excellent*; 2\* = quality that is *recognised internationally*; 1\* = quality that is *recognised nationally*; u/c = quality *below the standard of nationally recognised work*.

### Teaching Quality - Quality Assurance Agency (QAA) Reviews:

The QAA conducted an **ELIR (Enhancement Led Institutional Review)** at Heriot-Watt University in January/February 2006. On the basis of its findings the QAA confirmed that "**broad confidence** can be placed in the University's current, and likely future, management of the quality of its provision and the academic standards of its awards". This is the highest outcome possible under the ELIR review system. Fuller details are available on the QAA website at: [www.qaa.ac.uk](http://www.qaa.ac.uk)

The next ELIR will take place in January/February 2011.

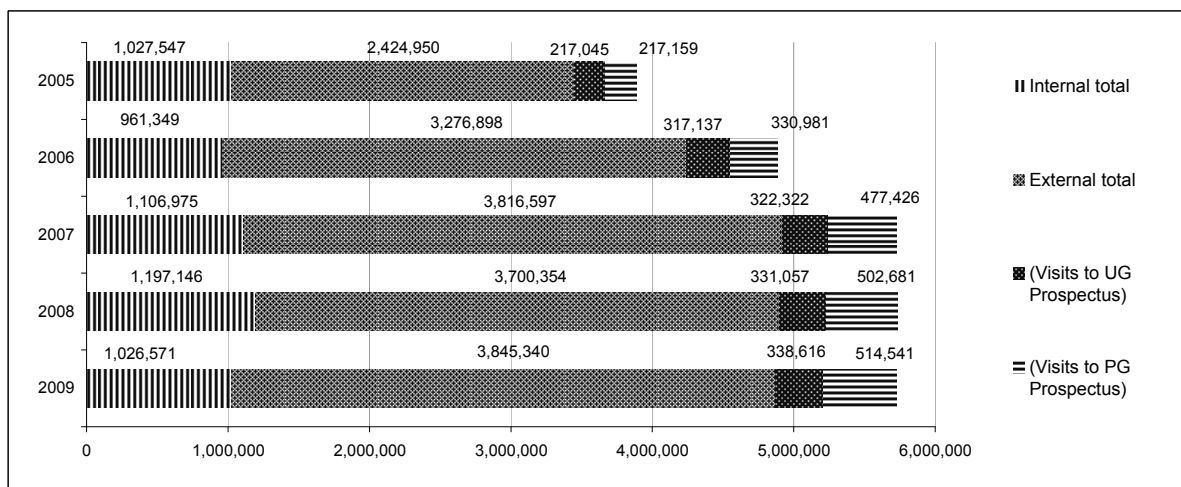
### COLLABORATIVE PARTNER INSTITUTIONS: 2009/10

COUNTRY	PARTNER INSTITUTION	
France	University of Burgundy (1), Institute National Polytechnique de Grenoble (1)	
China	University of Petroleum (1)	
Italy	Politecnico Di Milano (1)	
Mexico	Escuela y Bancaria Comercial S.C.(EBC) (1)	
UK	Aberdeen University (1)	University of Edinburgh (5)
	Edinburgh College of Art (1)	University of Glasgow (4)
	Glasgow Caledonian University (1)	University of Newcastle (4)
	Institute for System Level Integration (ISLI) (2)	University of St Andrews (1)
	Loughborough (1)	

() indicates number of collaborative courses run

## ACTIVITY STATISTICS: PUBLICITY & INFORMATION

### UNIVERSITY WEB SITE: unique visits: 2005 - 2009



### VISITS TO MAIN UNIVERSITY WEBSITE BY COUNTRY: Top 10 by Volume (%)

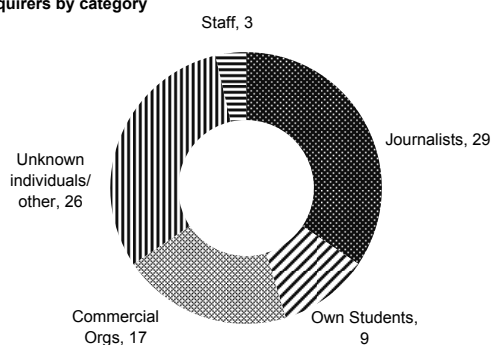
<b>2005</b>	<b>US</b>	<b>UK</b>	<b>Canada</b>	<b>Germany</b>	<b>France</b>	<b>Netherlands</b>	<b>Australia</b>	<b>Italy</b>	<b>Greece</b>	<b>India</b>
Average	29.0%	16.8%	1.2%	1.2%	1.1%	0.9%	0.8%	0.8%	0.7%	0.7%
<b>2006</b>	<b>UK</b>	<b>US</b>	<b>UAE</b>	<b>France</b>	<b>Germany</b>	<b>India</b>	<b>Italy</b>	<b>Australia</b>	<b>Canada</b>	<b>Netherlands</b>
Average	27.37%	26.83%	1.91%	0.96%	0.85%	0.74%	0.67%	0.64%	0.59%	0.58%
<b>2007</b>	<b>US</b>	<b>UK</b>	<b>France</b>	<b>India</b>	<b>Greece</b>	<b>Germany</b>	<b>Italy</b>	<b>Malaysia</b>	<b>Australia</b>	<b>UAE</b>
Average	27.20%	27.03%	1.07%	0.81%	0.79%	0.77%	0.47%	0.47%	0.46%	0.45%
<b>2008</b>	<b>UK</b>	<b>US</b>	<b>France</b>	<b>India</b>	<b>Greece</b>	<b>Germany</b>	<b>Australia</b>	<b>Italy</b>	<b>Malaysia</b>	<b>Canada</b>
Average	25.64%	25.29%	0.88%	0.76%	0.73%	0.57%	0.39%	0.35%	0.33%	0.30%
<b>2009</b>	<b>US</b>	<b>UK</b>	<b>India</b>	<b>Greece</b>	<b>France</b>	<b>Germany</b>	<b>Italy</b>	<b>Australia</b>	<b>Russia</b>	<b>Ireland</b>
Average	23.56%	22.53%	1.07%	0.85%	0.77%	0.63%	0.38%	0.34%	0.30%	0.28%

### ACTIVITY STATISTICS: "BADGED" FREEDOM OF INFORMATION AND OTHER CENTRALLY RECORDED REQUESTS 2009

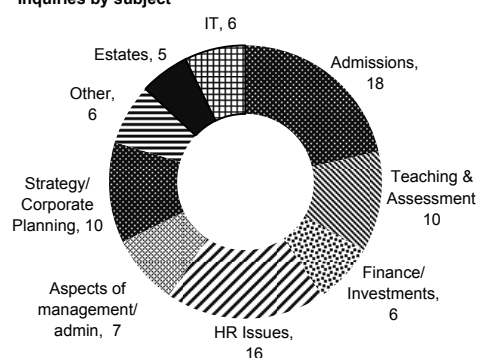
Freedom of Information (Scotland) requests	67
Environmental Information (Scotland) Regulations requests	1
Data Protection requests	16

The University responded by the due deadline in all but two cases. 51 requests were answered in full, 20 were partially exempt and 10 were fully exempt. In 2 cases the University did not hold the information, and 1 request was withdrawn.

#### Inquirers by category



#### Inquiries by subject







## Contact us

**HERIOT-WATT UNIVERSITY**

Edinburgh Campus  
Edinburgh EH14 4AS  
t: 0131 449 5111

[www.hw.ac.uk](http://www.hw.ac.uk)