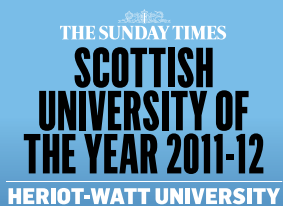


annual statistics 2011-2012



THE SUNDAY TIMES
**SCOTTISH
UNIVERSITY OF
THE YEAR 2011-12**
HERIOT-WATT UNIVERSITY

ANNUAL STATISTICS 2011/12

Contents

	Page(s)
1 PROFILE AT A GLANCE	3
2 STUDENT NUMBERS	5 – 20
3 APPROVED LEARNING PARTNERS	21
4 UNDERGRADUATE STUDENT APPLICATIONS & ADMISSIONS	22 – 26
5 FIRST DEGREES AWARDED	27
6 UNDERGRADUATE STUDENT PROGRESS (ALL STUDENTS/ FRESHERS ONLY)	28 – 31
7 DEGREES AWARDED (DUBAI CAMPUS)	32
8 HIGHER DEGREES AWARDED	33
9 GRADUATE FIRST DESTINATIONS	34 – 35
10 NATIONAL STUDENT SURVEY RESULTS	36 – 37
11 STAFF NUMBERS	38
12 UNIVERSITY ALUMNI	39

If you would like a large print version of this document please contact the Secretariat, Tel: 0131 451 3738.

Notes

This report is published annually. Suggestions for future enhancements are welcome. Please direct any comments or enquiries to the Secretariat:

Lorna Kirkwood-Smith, Tel: 0131 451 3631, Email: L.A.Kirkwood-Smith@hw.ac.uk or
Julie Brown, Tel: 0131 451 3365, Email: J.Brown@hw.ac.uk

Student numbers information is extracted from a 'snap-shot' of the student database at a census date in early December each year.

The report is available on the staff section of the University's web home page under Management & Governance/ Strategy & Performance, and is included in the University's Freedom of Information Publication Scheme at: www.hw.ac.uk/foi/

More detailed reporting may be available from contributing sections. Contact details are provided below.

July 2012

CONTACTS

Academic Registry and Student Services:

Jean Campbell, Management Information Officer, Ext: 3383, Email: J.M.Campbell@hw.ac.uk
Careers Advisory Service – Nick Thow, Director, Ext: 3392, Email: N.W.Thow@hw.ac.uk (First Destination data)

Secretariat:

Lorna Kirkwood-Smith, Head, Ext: 3631, Email: L.A.Kirkwood-Smith@hw.ac.uk
Julie Brown, Assistant to the Secretariat, Ext 3365, Email: J.Brown@hw.ac.uk

Recruitment & Admissions:

Michael Bates, Director, Ext: 3450, Email: M.Bates@hw.ac.uk (Recruitment and Admissions data)

Edinburgh Business School:

Adrian Carberry, Administration Manager, Ext: 3938, Email: A.Carberry@hw.ac.uk

Heriot-Watt University: Profile at a glance

Founded: 1821. Granted university status by Royal Charter in 1966.

Campus Locations: Edinburgh, Galashiels, Orkney, Dubai, Malaysia (from 2012)

The University's main Edinburgh campus comprises 380 acres of parkland and incorporates the Edinburgh Research Park established in 1971 as the first science park of its kind in the UK. In excess of 40 companies are currently based on the Research Park. In 2009, work was completed to co-locate with Scottish Borders College at the Netherdale Campus in Galashiels.

The Heriot-Watt University Dubai Campus was established in 2005 and accepted its first cohort of students in the autumn of that year. At the start of 2011/12 the student population had reached approximately 2,350.

The University's International Centre for Island Technology based in Stromness, Orkney Islands (Orkney Campus), is part of the University's Institute of Petroleum Engineering. The Centre concentrates on renewable energy, particularly marine energy.

In November 2011, Heriot-Watt University won a major international tender to establish a new purpose-built University Campus in Putrajaya, Malaysia. The Heriot-Watt Malaysia Campus will create opportunities for up to 4,000 undergraduate and postgraduate students to study degree-level programmes in science, business, engineering, mathematics and design. As at July 2012, campus plans are progressing with a view to the first degree courses being available from 2012/13.

Student population:

On-campus (Edinburgh, Orkney):-

- 5,159 undergraduate (including exchange and visiting students)
- 1,449 postgraduate taught course
- 548 postgraduate research

On-campus (Scottish Borders Campus)

- 637 undergraduate (including exchange and visiting students)
- 22 postgraduate taught course
- 13 postgraduate research

On-campus (Dubai)

- 1,571 undergraduate
- 776 postgraduate taught course

About one third of the University's 'on campus' students studying in Scotland are from outside of the UK making Heriot-Watt one of the most internationally diversified of any UK universities.

Transnational programmes (independent study in around 150 countries worldwide or through a network of 43 Approved Learning Partners ALPs). In HESA reporting year ending 31 July 2011 there were:

- 8,258 active matriculated ALP students
- 3,161 active matriculated independent (distance learning) students

Staff population (Scottish Campus):

Total: 1,737 (headcount) of which:-

- 480 academic
- 184 research staff
- 524 professional (non academic)
- 549 other staff (incl non standard contract staff)

STUDENT NUMBERS (ON CAMPUS IN SCOTLAND): 2009/10 - 2011/12

UNDERGRADUATE students by attendance level and gender

2011/12	ft	pt	Total	%	% change yr/yr	2010/11	ft	pt	Total	%	% change yr/yr	2009/10	ft	pt	Total	%	% change yr/yr
Female	2349	23	2372	42.1	4.8	Female	2219	45	2264	41.2	-4.2	Female	2337	27	2364	40.3	6.0
Male	3202	64	3266	57.9	1.1	Male	3144	88	3232	58.8	-7.7	Male	3446	54	3500	59.7	12.2

Includes home students on a year abroad or on placement as part of their studies.

Excludes registered incoming exchange, non-graduating and visiting students. These are detailed on page 13.

POSTGRADUATE TAUGHT COURSE students by attendance level and gender

2011/12	ft	pt	Total	%	% change yr/yr	2010/11	ft	pt	Total	%	% change yr/yr	2009/10	ft	pt	Total	%	% change yr/yr
Female	544	42	586	39.8	14.5	Female	481	31	512	34.9	0.6	Female	433	76	509	32.2	10.9
Male	825	60	885	60.2	-7.5	Male	896	61	957	65.1	-10.6	Male	887	183	1070	67.8	27.2

Excludes staff registrations for the Postgraduate Certificate in Academic Practice.

Excludes very small numbers of registered incoming exchange, non-graduating and other visiting students.

POSTGRADUATE RESEARCH students by attendance level and gender

2011/12	ft	pt	Total	%	% change yr/yr	2010/11	ft	pt	Total	%	% change yr/yr	2009/10	ft	pt	Total	%	% change yr/yr
Female	151	12	163	29.1	3.2	Female	145	13	158	30.3	12.1	Female	122	19	141	28.6	0.0
Male	365	33	398	70.9	9.3	Male	334	30	364	69.7	3.4	Male	311	41	352	71.4	3.5

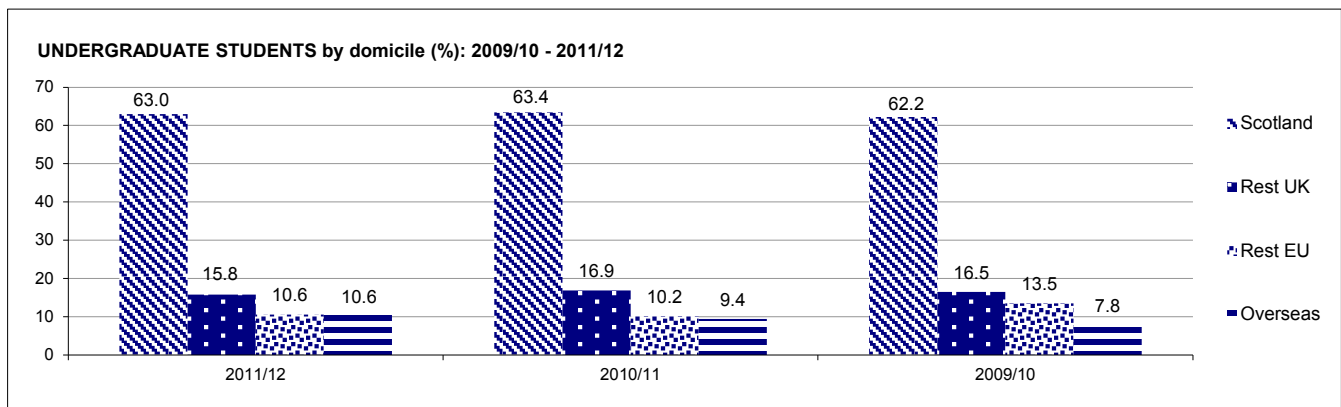
Includes small numbers of active registered students recorded as "writing up".

Excludes small numbers of registered incoming exchange, non-graduating and visiting scholars.

ALL STUDENTS by fees status (UK, other EU, overseas)

2011/12	UK	EU	OS	Total	% change yr/yr	2010/11	UK	EU	OS	Total	% change yr/yr	2009/10	UK	EU	OS	Total	% change yr/yr
UG	4424	643	571	5638	2.6	UG	4416	562	518	5496	-6.3	UG	4613	791	460	5864	9.6
PGT	365	306	800	1471	0.1	PGT	325	303	841	1469	-7.0	PGT	367	447	765	1579	21.5
PGR	89	204	268	561	7.5	PGR	177	82	263	522	5.9	PGR	174	85	234	493	2.5

Refer to inclusions/exclusions listed above.



UNDERGRADUATE STUDENTS BY SCHOOL/PROGRAMME, ATTENDANCE LEVEL AND GENDER: 2009/10 - 2011/12
On-campus - Scotland

	2011/12				2010/11				2009/10						
	Gend.	ft	pt	Total %	Gend.	ft	pt	Total %	Gend.	ft	pt	Total %			
UNIVERSITY TOTAL		5551	87	5638		5363	133	5496		5783	81	5864			
BUILT ENVIRONMENT		742	12	754	17.5	733	17	750	15.1	766	22	788	14.9		
Architectural Engineering	F	24		24	24.2	F	18		18	22.2	F	21		21	30.0
	M	73	2	75	75.8	M	62	1	63	77.8	M	49		49	70.0
Total		97	2	99		80	1	81		70		70			
Civil Engineering	F	60		60	17.5	F	51		51	15.1	F	53		53	14.9
	M	277	6	283	82.5	M	279	7	286	84.9	M	288	14	302	85.1
Total		337	6	343		330	7	337		341	14	355			
Construction Management & Surveying	F	32		32	16.1	F	35	2	37	17.8	F	36	2	38	16.8
	M	165	2	167	83.9	M	166	5	171	82.2	M	185	3	188	83.2
Total		197	2	199		201	7	208		221	5	226			
Urban Studies	F	42	2	44	38.9	F	44		44	35.5	F	44	1	45	32.8
	M	69		69	61.1	M	78	2	80	64.5	M	90	2	92	67.2
Total		111	2	113		122	2	124		134	3	137			
ENGINEERING & PHYSICAL SCIENCES		1339	38	1377	20.2	1309	59	1368	20.8	1467	18	1485	19.5		
Chemical Engineering	F	72		72	25.6	F	52		52	21.6	F	47		47	20.3
	M	205	4	209	74.4	M	181	8	189	78.4	M	183	1	184	79.7
Total		277	4	281		233	8	241		230	1	231			
Chemistry	F	99		99	44.0	F	104		104	43.0	F	129		129	44.8
	M	125	1	126	56.0	M	137	1	138	57.0	M	159		159	55.2
Total		224	1	225		241	1	242		288		288			
Combined Studies (BSc/BEng)	F	24	8	32	27.6	F	26	17	43	28.5	F	36	3	39	22.3
	M	61	23	84	72.4	M	79	29	108	71.5	M	128	8	136	77.7
Total		85	31	116		105	46	151		164	11	175			
Electrical, Electronic & Computer Engineering	F	12		12	7.1	F	14		14	8.0	F	15		15	8.7
	M	156	1	157	92.9	M	159	3	162	92.0	M	157		157	91.3
Total		168	1	169		173	3	176		172		172			
Mechanical Engineering	F	36		36	8.6	F	35		35	9.0	F	34		34	7.7
	M	381		381	91.4	M	355	1	356	91.0	M	401	5	406	92.3
Total		417		417		390	1	391		435	5	440			
Physics	F	27		27	16.0	F	37		37	22.2	F	26		26	14.5
	M	141	1	142	84.0	M	130		130	77.8	M	152	1	153	85.5
Total		168	1	169		167		167		178	1	179			
LIFE SCIENCES		671	8	679	58.6	596	19	615	53.0	677	7	684	50.9		
Biology	F	184	1	185	54.1	F	142	4	146	52.1	F	171	2	173	52.3
	M	153	4	157	45.9	M	127	7	134	47.9	M	156	2	158	47.7
Total		337	5	342		269	11	280		327	4	331			
Psychology	F	175	2	177	75.6	F	129	2	131	72.4	F	115	2	117	66.9
	M	57		57	24.4	M	50		50	27.6	M	58		58	33.1
Total		232	2	234		179	2	181		173	2	175			
Sport & Exercise Science	F	35	1	36	35.0	F	49		49	31.8	F	58		58	32.6
	M	67		67	65.0	M	99	6	105	68.2	M	119	1	120	67.4
Total		102	1	103		148	6	154		177	1	178			
MANAGEMENT & LANGUAGES		1441	21	1462	50.7	1382	24	1406	52.0	1515	23	1538	50.8		
Accountancy & Finance	F	144	2	146	39.8	F	164	5	169	43.9	F	191	3	194	43.8
	M	213	8	221	60.2	M	211	5	216	56.1	M	245	4	249	56.2
Total		357	10	367		375	10	385		436	7	443			
Combined Studies (BA)	F	22		22	56.4	F	13		13	37.1	F	15		16	34.8
	M	16	1	17	43.6	M	21	1	22	62.9	M	30		30	65.2
Total		38	1	39		34	1	35		45	1	46			
Economics	F	65		65	31.9	F	45	1	46	28.6	F	48	2	50	27.6
	M	138	1	139	68.1	M	114	1	115	71.4	M	127	4	131	72.4
Total		203	1	204		159	2	161		175	6	181			
Languages	F	247	1	248	76.5	F	240	6	246	80.1	F	244		244	79.7
	M	76		76	23.5	M	60	1	61	19.9	M	62		62	20.3
Total		323	1	324		300	7	307		306		306			
Management	F	219	3	222	50.5	F	203	1	204	50.6	F	207	2	209	49.2
	M	215	3	218	49.5	M	197	2	199	49.4	M	211	5	216	50.8
Total		434	6	440		400	3	403		418	7	425			
Management (Scottish Borders Campus)	F	33		33	42.9	F	34		34	43.0	F	43		43	48.9
	M	42	2	44	57.1	M	44	1	45	57.0	M	44	1	45	51.1
Total		75	2	77		78	1	79		87	1	88			
Foundation English/Interpreting Studies	F	5		5	45.5	F	16		16	44.4	F	12		13	26.5
	M	6		6	54.5	M	20		20	55.6	M	36		36	73.5
Total		11		11		36		36		48	1	49			
MATHEMATICAL & COMPUTER SCIENCES		807	5	812	33.7	832	10	842	33.7	840	4	844	34.5		
Actuarial Mathematics & Statistics	F	103		103	35.9	F	112		112	38.8	F	125		125	41.7
	M	183	1	184	64.1	M	176	1	177	61.2	M	175		175	58.3
Total		286	1	287		288	1	289		300		300			
Computer Science	F	31		31	12.4	F	31	3	34	12.9	F	28		28	10.9
	M	218	1	219	87.6	M	225	4	229	87.1	M	225	3	228	89.1
Total		249	1	250		256	7	263		253	3	256			
Mathematics	F	140		140	50.9	F	138		138	47.6	F	137	1	138	47.9
	M	132	3	135	49.1	M	150	2	152	52.4	M	150		150	52.1
Total		272	3	275		288	2	290		287	1	288			
TEXTILES & DESIGN		551	3	554	94.0	511	4	515	95.3	518	7	525	97.0		
Combined Studies	F	4		4	80.0	F	10	1	11	100.0	F	7	1	8	100.0
	M	1		1	20.0	M					M				
Total		5		5		10	1	11		7	1	8			
Textiles & Design	F	514	3	517	94.2	F	477	3	480	95.2	F	495	6	501	96.9
	M	32		32	5.8	M	24		24	4.8	M	16		16	3.1
Total		546	3	549		501	3	504		511	6	517			

Percentage totals for Schools relate to the female population
 Note inclusions/exclusions detailed on page 5

UNDERGRADUATE FRESHER STUDENTS BY GENDER: 2009/10 - 2011/12
On-campus - Scotland

	2011/12		2010/11		2009/10				
	Gend.	%	Gend.	%	Gend.	%			
UNIVERSITY TOTAL		1832	45.6		1520	41.4		2210	38.3
BUILT ENVIRONMENT		228	26.3		168	17.3		269	17.5
Architectural Engineering	F	11	34.4	F	3	11.1	F	7	25.9
	M	21	65.6	M	24	88.9	M	20	74.1
Total		32		27		27		27	
Civil Engineering	F	22	21.6	F	9	15.3	F	19	15.1
	M	80	78.4	M	50	84.7	M	107	84.9
Total		102		59		126		126	
Construction Management & Surveying	F	11	18.6	F	6	12.2	F	8	9.9
	M	48	81.4	M	43	87.8	M	73	90.1
Total		59		49		81		81	
Urban Studies	F	16	45.7	F	11	33.3	F	13	37.1
	M	19	54.3	M	22	66.7	M	22	62.9
Total		35		33		35		35	
ENGINEERING & PHYSICAL SCIENCES		451	22.0		422	24.4		570	17.7
Chemical Engineering	F	31	32.0	F	21	27.3	F	13	14.8
	M	66	68.0	M	56	72.7	M	75	85.2
Total		97		77		88		88	
Chemistry	F	36	45.0	F	32	45.7	F	57	46.7
	M	44	55.0	M	38	54.3	M	65	53.3
Total		80		70		122		122	
Combined Studies (BSc/BEng)	F	6	23.1	F	13	36.1	F	8	21.1
	M	20	76.9	M	23	63.9	M	30	78.9
Total		26		36		38		38	
Electrical, Electronic & Computer Engineering	F	4	6.2	F	3	4.3	F	4	5.5
	M	61	93.8	M	67	95.7	M	69	94.5
Total		65		70		73		73	
Mechanical Engineering	F	11	9.4	F	13	13.0	F	9	5.5
	M	106	90.6	M	87	87.0	M	156	94.5
Total		117		100		165		165	
Physics	F	11	16.7	F	21	30.4	F	10	11.9
	M	55	83.3	M	48	69.6	M	74	88.1
Total		66		69		84		84	
LIFE SCIENCES		242	64.5		161	60.2		274	50.7
Biology	F	79	55.2	F	39	52.0	F	73	54.1
	M	64	44.8	M	36	48.0	M	62	45.9
Total		143		75		135		135	
Psychology	F	77	77.8	F	51	86.4	F	47	62.7
	M	22	22.2	M	8	13.6	M	28	37.3
Total		99		59		75		75	
Sport & Exercise Science	F			F	7	25.9	F	19	29.7
	M			M	20	74.1	M	45	70.3
Total				27		64		64	
MANAGEMENT & LANGUAGES		509	51.1		376	53.7		592	46.8
Accountancy & Finance	F	49	43.4	F	33	39.8	F	56	36.4
	M	64	56.6	M	50	60.2	M	98	63.6
Total		113		83		154		154	
Combined Studies (BA)	F			F			F	7	35.0
	M			M			M	13	65.0
Total							20		
Economics	F	25	34.2	F	11	27.5	F	15	22.7
	M	48	65.8	M	29	72.5	M	51	77.3
Total		73		40		66		66	
Languages	F	89	73.0	F	90	70.3	F	102	60.7
	M	33	27.0	M	38	29.7	M	66	39.3
Total		122		128		168		168	
Management	F	75	47.5	F	49	59.8	F	64	55.2
	M	83	52.5	M	33	40.2	M	52	44.8
Total		158		82		116		116	
Management (Scottish Borders Campus)	F	17	53.1	F	19	44.2	F	33	48.5
	M	15	46.9	M	24	55.8	M	35	51.5
Total		32		43		68		68	
Foundation English/Interpreting Studies	F	5	45.5	F			F		
	M	6	54.5	M			M		
Total		11							
MATHEMATICAL & COMPUTER SCIENCES		206	36.9		260	30.0		310	32.3
Actuarial Mathematics & Statistics	F	32	37.6	F	32	32.7	F	37	37.0
	M	53	62.4	M	66	67.3	M	63	63.0
Total		85		98		100		100	
Computer Science	F	11	18.3	F	15	16.7	F	14	13.0
	M	49	81.7	M	75	83.3	M	94	87.0
Total		60		90		108		108	
Mathematics	F	33	54.1	F	31	43.1	F	49	48.0
	M	28	45.9	M	41	56.9	M	53	52.0
Total		61		72		102		102	
TEXTILES & DESIGN		196	94.4		133	91.0		195	93.8
Textiles & Design	F	185	94.4	F	121	91.0	F	183	93.8
	M	11	5.6	M	12	9.0	M	12	6.2

Percentage totals for Schools relate to the female population

Note inclusions/exclusions detailed on page 5

Sport & Exercise Science was closed to new entrants after 2010/11

POSTGRADUATE TAUGHT COURSE STUDENTS BY SCHOOL/PROGRAMME, ATTENDANCE LEVEL AND GENDER 2009/10 - 2011/12

On-campus - Scotland

	2011/12					2010/11					2009/10				
	Gend.	ft	pt	Total	%	Gend.	ft	pt	Total	%	Gend.	ft	pt	Total	%
UNIVERSITY TOTAL		1340	131	1471			1377	92	1469			1320	259	1579	
BUILT ENVIRONMENT		168	84	252	39.7		215	49	264	28.0		218	79	297	28.3
Architectural Engineering	F	6		6	25.0	F	5		5	17.2	F	3	1	4	26.7
	M	13	5	18	75.0	M	17	7	24	82.8	M	7	4	11	73.3
Total		19	5	24			22	7	29			10	5	15	
Built Environment General	F	1		1	100.0	F	1		1	100.0					
	M					M									
Total		1		1			1		1						
Civil Engineering	F	6	1	7	13.7	F	7	1	8	13.8	F	8	2	10	14.5
	M	36	8	44	86.3	M	39	11	50	86.2	M	48	11	59	85.5
Total		42	9	51			46	12	58			56	13	69	
Construction Management & Surveying	F	15	3	18	22.5	F	16	1	17	22.4	F	17	4	21	20.2
	M	47	15	62	77.5	M	51	8	59	77.6	M	63	20	83	79.8
Total		62	18	80			67	9	76			80	24	104	
Urban Studies	F	27	41	68	70.8	F	32	11	43	43.0	F	28	21	49	45.0
	M	17	11	28	29.2	M	47	10	57	57.0	M	44	16	60	55.0
Total		44	52	96			79	21	100			72	37	109	
ENGINEERING & PHYSICAL SCIENCES		157	8	165	22.4		176	4	180	22.8		230	148	378	20.4
Chemical Engineering	F	3	5	8	100.0	F	2		2	18.2	F	2		2	13.3
	M					M	9		9	81.8	M	13		13	86.7
Total		3	5	8			11		11			15		15	
Chemistry	F	5		5	45.5	F	1		1	16.7	F	4		4	40.0
	M	6		6	54.5	M	5		5	83.3	M	6		6	60.0
Total		11		11			6		6			10		10	
Electrical, Electronic & Computer Engineering	F	8		8	18.6	F	20		20	26.3	F	15		15	16.3
	M	35		35	81.4	M	56		56	73.7	M	76	1	77	83.7
Total		43		43			76		76			91	1	92	
Mechanical Engineering	F	14		14	14.9	F	11		11	15.7	F	19	34	53	21.8
	M	77	3	80	85.1	M	55	4	59	84.3	M	77	113	190	78.2
Total		91	3	94			66	4	70			96	147	243	
Physics	F	2		2	22.2	F	7		7	41.2	F	3		3	16.7
	M	7		7	77.8	M	10		10	58.8	M	15		15	83.3
Total		9		9			17		17			18		18	
LIFE SCIENCES		120	5	125	46.4		91	5	96	39.6		74	5	79	39.2
Biology	F	31	2	33	38.8	F	30	4	34	37.4	F	26	5	31	39.2
	M	52		52	61.2	M	57		57	62.6	M	48		48	60.8
Total		83	2	85			87	4	91			74	5	79	
Psychology	F	23	2	25	62.5	F	3	1	4	80.0	F				
	M	14	1	15	37.5	M	1		1	20.0	M				
Total		37	3	40			4	1	5						
MANAGEMENT & LANGUAGES		415	9	424	55.0		388	10	398	50.3		311	7	318	52.8
Accountancy & Finance	F	43		43	46.2	F	26		26	36.1	F	11		11	26.2
	M	49	1	50	53.8	M	45	1	46	63.9	M	31		31	73.8
Total		92	1	93			71	1	72			42		42	
Languages	F	37		37	71.2	F	44		44	80.0	F	37		37	71.2
	M	15		15	28.8	M	11		11	20.0	M	15		15	28.8
Total		52		52			55		55			52		52	
Management	F	148	5	153	54.8	F	125	5	130	48.0	F	116	4	120	53.6
	M	123	3	126	45.2	M	137	4	141	52.0	M	101	3	104	46.4
Total		271	8	279			262	9	271			217	7	224	
MATHEMATICAL & COMPUTER SCIENCES		250	7	257	40.5		206	7	213	33.8		218	5	223	30.5
Actuarial Mathematics & Statistics	F	81	1	82	49.7	F	38	1	39	39.0	F	39		39	36.1
	M	83		83	50.3	M	61		61	61.0	M	68	1	69	63.9
Total		164	1	165			99	1	100			107	1	108	
Computer Science	F	12		12	19.4	F	23		23	26.7	F	12		12	16.9
	M	47	3	50	80.6	M	60	3	63	73.3	M	59		59	83.1
Total		59	3	62			83	3	86			71		71	
Mathematics	F	8	2	10	33.3	F	10		10	37.0	F	16	1	17	38.6
	M	19	1	20	66.7	M	14	3	17	63.0	M	24	3	27	61.4
Total		27	3	30			24	3	27			40	4	44	
TEXTILES & DESIGN		22		22	81.8		27	2	29	69.0		22		22	77.3
Textiles & Design	F	18		18	81.8	F	18	2	20	69.0	F	17		17	77.3
	M	4		4	18.2	M	9		9	31.0	M	5		5	22.7
PETROLEUM ENGINEERING		195		195	25.1		247		247	21.5		200	1	201	23.9
Petroleum Engineering	F	49		49	25.1	F	53		53	21.5	F	48		48	23.9
	M	146		146	74.9	M	194		194	78.5	M	152	1	153	76.1
EDINBURGH BUSINESS SCHOOL		13	18	31	51.6		27	15	42	33.3		47	14	61	26.2
Edinburgh Business School	F	7	9	16	51.6	F	9	5	14	33.3	F	12	4	16	26.2
	M	6	9	15	48.4	M	18	10	28	66.7	M	35	10	45	73.8

Percentage totals for Schools/Institutes relate to the female population
 Note inclusions/exclusions detailed on page 5

POSTGRADUATE TAUGHT COURSE STUDENTS BY SCHOOL/PG/PROGRAMME AND FEE TYPE 2009/10 - 2011/12

On-campus - Scotland

SCHOOL/Programme	2011/12						2010/11						2009/10																		
	UK		EU		OS		UK		EU		OS		UK		EU		OS														
	ft	pt	Tot.	ft	pt	Tot.	ft	pt	Tot.	ft	pt	Tot.	ft	pt	Tot.	ft	pt	Tot.													
UNIVERSITY TOTAL	284	81	365	293	13	306	792	8	800	1471	244	81	325	294	9	303	839	2	841	1469	268	99	367	293	154	447	759	6	765	1579	
BUILT ENVIRONMENT	50	53	103	30	3	33	112	4	116	252	59	44	103	35	4	39	121	1	122	264	67	70	137	50	5	55	101	4	105	297	
Architectural Engineering	5	5	10	5		5	9	9	9	24	6	7	13	5		5	11		11	29	3	5	8	1		1	6		6	15	
Built Environment General						1		1	1	1						1			1	1											
Civil Engineering	12	7	19	12	2	14	18	18	51	51	12	9	21	14	3	17	20	20	58	58	20	11	31	13	2	15	23	23	69	69	
Construction Management & Surveying	9	15	24	8		8	45	3	48	80	15	8	23	6		6	46	1	47	76	21	19	40	20	2	22	39	3	42	104	
Urban Studies	24	26	50	5	1	6	39	1	40	96	26	20	46	10	1	11	43		43	100	23	35	58	16	1	17	33	1	34	109	
ENGINEERING & PHYSICAL SCIENCES	40	2	42	52	1	53	70	70	165	165	27	3	30	56	1	57	93		93	180	40	1	41	78	147	225	112	112	378		
Chemical Engineering	1	1	5	5		5	2	2	8	8	1	1	5	5		5	5		5	11	2	2	7	7		7	6	6	15		
Chemistry	8		8			3		3	11	11	4		4			2			2	6	6		6	1		1	3	3	10		
Electrical, Electronic & Computer Engineering	5		5	10		10	28	28	43	43	2	2	15	15	15	59	59	76	76	76	6	1	7	15	15	15	70	70	92	92	
Mechanical Engineering	23	2	25	34	1	35	34	34	94	94	15	3	18	33	1	34	18	18	18	70	22	22	52	147	199	22	22	243	243		
Physics	3		3	3		3	3	3	9	9	5	5	5	3	3	9	9	9	17	17	4	4	3	3	3	11	11	18	18		
LIFE SCIENCES	49	4	53	10	1	11	61	61	125	125	25	5	30	17	17	49	49	49	96	96	23	5	28	15	15	36	36	79	79		
Biology	37	1	38	7	1	8	39	39	85	85	22	4	26	16	16	49	49	49	91	91	23	5	28	15	15	36	36	79	79		
Psychology	12	3	15	3		3	22	22	40	40	3	1	4	1		1			5	5											
MANAGEMENT & LANGUAGES	59	3	62	142	5	147	214	1	215	424	58	6	64	105	3	108	225	1	226	398	49	5	54	90	2	92	172	172	318		
Accountancy & Finance	16	1	17	28		28	48	48	93	93	9	1	10	15	15	47	47	47	72	72	5	5	15	15	15	22	22	42	42		
Languages	15		15	21		21	16	16	52	52	14		14	20	20	21	21	21	55	55	15	15	23	23	14	14	14	52	52		
Management	28	2	30	93	5	98	150	1	151	279	35	5	40	70	3	73	157	1	158	271	29	5	34	52	2	54	136	136	224		
MATHEMATICAL & COMPUTER SCIENCES	28	4	32	33	2	35	189	1	190	257	23	6	29	30	1	31	153		153	213	33	4	37	36	36	149	1	150	223		
Actuarial Mathematics & Statistics	6		6	15	1	16	143	143	165	165	10	1	11	13	13	76	76	76	100	100	16	16	18	18	18	73	1	74	108		
Computer Science	7	1	8	14	1	15	38	1	39	62	8	2	10	12	1	13	63	63	86	86	7	7	13	13	13	51	51	71	71		
Mathematics	15	3	18	4		4	8	8	30	30	5	3	8	5	5	14	14	14	27	27	10	4	14	5	5	25	25	44	44		
TEXTILES & DESIGN	10		10	2		2	10	10	22	22	6	2	8	4	4	17	17	17	29	29	7	7	7	4	4	11	11	22	22		
PETROLEUM ENGINEERING	46		46	23		23	126	126	195	195	46		46	47		47	154		154	247	43		43	20		20	137	1	138	201	
EDINBURGH BUSINESS SCHOOL	2	15	17	1	1	2	10	2	12	31	15	15	15	15	27	27	27	42	42	6	14	20	41	41	41	41	41	61	61		

Note inclusions/exclusions detailed on page 5

POSTGRADUATE TAUGHT COURSE FRESHER STUDENTS BY GENDER 2009/10 - 2011/12

On-campus - Scotland

	2011/12			2010/11			2009/10		
	Gend.	Total	%	Gend.	Total	%	Gend.	Total	%
UNIVERSITY TOTAL		1314	40.6		1371	34.6		1358	32.3
BUILT ENVIRONMENT		189	30.2		217	26.7		249	26.9
Architectural Engineering	F	5	26.3	F	5	20.0	F	3	23.1
	M	14	73.7	M	20	80.0	M	10	76.9
Total		19			25			13	
Civil Engineering	F	5	13.5	F	6	12.2	F	9	15.5
	M	32	86.5	M	43	87.8	M	49	84.5
Total		37			49			58	
Construction Management & Surveying	F	14	24.1	F	15	24.6	F	18	20.0
	M	44	75.9	M	46	75.4	M	72	80.0
Total		58			61			90	
Urban Studies	F	33	44.0	F	31	38.3	F	37	42.0
	M	42	56.0	M	50	61.7	M	51	58.0
Total		75			81			88	
ENGINEERING & PHYSICAL SCIENCES		139	20.1		160	21.3		278	19.1
Chemical Engineering	F	3	37.5	F	2	18.2	F	2	13.3
	M	5	62.5	M	9	81.8	M	13	86.7
Total		8			11			15	
Chemistry	F	4	40.0	F	1	16.7	F	4	40.0
	M	6	60.0	M	5	83.3	M	6	60.0
Total		10			6			10	
Electrical, Electronic & Computer Engineering	F	5	19.2	F	13	23.2	F	15	16.9
	M	21	80.8	M	43	76.8	M	74	83.1
Total		26			56			89	
Mechanical Engineering	F	14	16.1	F	11	15.7	F	29	19.9
	M	73	83.9	M	59	84.3	M	117	80.1
Total		87			70			146	
Physics	F	2	25.0	F	7	41.2	F	3	16.7
	M	6	75.0	M	10	58.8	M	15	83.3
Total		8			17			18	
LIFE SCIENCES		123	45.5		93	37.6		77	37.7
Biology	F	32	38.1	F	31	35.2	F	29	37.7
	M	52	61.9	M	57	64.8	M	48	62.3
Total		84			88			77	
Psychology	F	24	61.5	F	4	80.0	F		
	M	15	38.5	M	1	20.0	M		
Total		39			5				
MANAGEMENT & LANGUAGES		392	54.6		393	50.4		289	52.2
Accountancy & Finance	F	43	46.7	F	26	36.1	F	11	26.2
	M	49	53.3	M	46	63.9	M	31	73.8
Total		92			72			42	
Languages	F	36	70.6	F	44	80.0	F	37	71.2
	M	15	29.4	M	11	20.0	M	15	28.8
Total		51			55			52	
Management	F	135	54.2	F	128	48.1	F	103	52.8
	M	114	45.8	M	138	51.9	M	92	47.2
Total		249			266			195	
MATHEMATICAL & COMPUTER SCIENCES		238	41.6		208	33.2		217	30.9
Actuarial Mathematics & Statistics	F	82	50.0	F	37	37.8	F	38	36.2
	M	82	50.0	M	61	62.2	M	67	63.8
Total		164			98			105	
Computer Science	F	8	17.0	F	22	25.6	F	12	16.9
	M	39	83.0	M	64	74.4	M	59	83.1
Total		47			86			71	
Mathematics	F	9	33.3	F	10	41.7	F	17	41.5
	M	18	66.7	M	14	58.3	M	24	58.5
Total		27			24			41	
TEXTILES & DESIGN		22	81.8		28	67.9		22	77.3
Textiles & Design	F	18	81.8	F	19	67.9	F	17	77.3
	M	4	18.2	M	9	32.1	M	5	22.7
PETROLEUM ENGINEERING		192	25.5		239	21.3		200	24.0
Petroleum Engineering	F	49	25.5	F	51	21.3	F	48	24.0
	M	143	74.5	M	188	78.7	M	152	76.0
EDINBURGH BUSINESS SCHOOL		19	63.2		33	33.3		26	23.1
Edinburgh Business School	F	12	63.2	F	11	33.3	F	6	23.1
	M	7	36.8	M	22	66.7	M	20	76.9

Percentage totals for Schools/Institutes relate to the female population
 Note inclusions/exclusions detailed on page 5

POSTGRADUATE RESEARCH STUDENTS BY SCHOOL/PROGRAMME, ATTENDANCE LEVEL AND GENDER: 2009/10 - 2011/12

On-campus - Scotland

	2011/12				2010/11				2009/10						
	Gend.	ft	pt	Total %	Gend.	ft	pt	Total %	Gend.	ft	pt	Total %			
UNIVERSITY TOTAL		516	45	561		479	43	522		433	60	493			
BUILT ENVIRONMENT		83	13	96	31.3		73	9	82	37.8		56	15	71	35.2
Architectural Engineering	F	1		1	100.0	F				F					
	M					M				M					
Total		1		1											
Civil Engineering	F	8	2	10	34.5	F	10	1	11	40.7	F	7	1	8	34.8
	M	18	1	19	65.5	M	15	1	16	59.3	M	12	3	15	65.2
Total		26	3	29		25	2	27		19	4	23			
Construction Management & Surveying	F	7	3	10	24.4	F	8	1	9	25.7	F	6	2	8	25.8
	M	26	5	31	75.6	M	21	5	26	74.3	M	14	9	23	74.2
Total		33	8	41		29	6	35		20	11	31			
Urban Studies	F	10		10	40.0	F	11		11	55.0	F	9		9	52.9
	M	13	2	15	60.0	M	8	1	9	45.0	M	8		8	47.1
Total		23	2	25		19	1	20		17		17			
ENGINEERING & PHYSICAL SCIENCES		214	6	220	23.2		200	3	203	23.6		206	10	216	20.4
Chemical Engineering	F	9		9	60.0	F	7		7	50.0	F	5		5	27.8
	M	6		6	40.0	M	7		7	50.0	M	13		13	72.2
Total		15		15		14		14		18		18			
Chemistry	F	11		11	36.7	F	11		11	36.7	F	11		11	29.7
	M	19		19	63.3	M	19		19	63.3	M	26		26	70.3
Total		30		30		30		30		37		37			
Electrical, Electronic & Computer Engineering	F	6	1	7	20.0	F	5		5	13.2	F	7		7	15.6
	M	26	2	28	80.0	M	32	1	33	86.8	M	36	2	38	84.4
Total		32	3	35		37	1	38		43	2	45			
Mechanical Engineering	F	8		8	18.2	F	10		10	25.6	F	9	1	10	22.7
	M	35	1	36	81.8	M	28	1	29	74.4	M	30	4	34	77.3
Total		43	1	44		38	1	39		39	5	44			
Physics	F	16		16	16.7	F	15		15	18.3	F	11		11	15.3
	M	78	2	80	83.3	M	66	1	67	81.7	M	58	3	61	84.7
Total		94	2	96		81	1	82		69	3	72			
LIFE SCIENCES		50	4	54	45.8		40	6	46	42.9		27	11	38	36.1
Biology	F	19		19	44.2	F	11		11	33.3	F	8	1	9	29.0
	M	21	3	24	55.8	M	18	4	22	66.7	M	15	7	22	71.0
Total		40	3	43		29	4	33		23	8	31			
Life Sciences	F	1		1	25.0	F	1		1	50.0	F	1	3	4	80.0
	M	2	1	3	75.0	M	1		1	50.0	M	1		1	20.0
Total		3	1	4		2		2		2	3	5			
Psychology	F	3		3	60.0	F	5	2	7	77.8	F	1	3	4	80.0
	M	2		2	40.0	M	2		2	22.2	M	1		1	20.0
Total		5		5		7	2	9		2	3	5			
Sport & Exercise Science	F					F	1		1	50.0	F	2		2	100.0
	M	2		2	100.0	M	1		1	50.0	M				
Total		2		2		2		2		2		2			
MANAGEMENT & LANGUAGES		33	9	42	38.1		29	9	38	42.1		23	9	32	50.0
Accountancy & Finance	F	2	1	3	33.3	F	4	1	5	62.5	F	2		2	40.0
	M	6		6	66.7	M	3		3	37.5	M	3		3	60.0
Total		8	1	9		7	1	8		5		5			
Economics	F	2		2	25.0	F	3		3	37.5	F	1		1	20.0
	M	6		6	75.0	M	5		5	62.5	M	4		4	80.0
Total		8		8		8		8		5		5			
Languages	F	4	2	6	54.5	F	4	1	5	55.6	F	6	3	9	75.0
	M	3	2	5	45.5	M	2	2	4	44.4	M	2	1	3	25.0
Total		7	4	11		6	3	9		8	4	12			
Management	F	4	1	5	35.7	F	1	2	3	23.1	F	2	2	4	40.0
	M	6	3	9	64.3	M	7	3	10	76.9	M	3	3	6	60.0
Total		10	4	14		8	5	13		5	5	10			
MATHEMATICAL & COMPUTER SCIENCES		65	8	73	30.1		62	9	71	29.6		53	8	61	32.8
Actuarial Mathematics & Statistics	F	1		1	20.0	F	2		2	25.0	F	3		3	30.0
	M	3	1	4	80.0	M	5	1	6	75.0	M	7		7	70.0
Total		4	1	5		7	1	8		10		10			
Computer Science	F	10		10	24.4	F	7	2	9	25.0	F	5	4	9	26.5
	M	25	6	31	75.6	M	22	5	27	75.0	M	21	4	25	73.5
Total		35	6	41		29	7	36		26	8	34			
Mathematics	F	10	1	11	40.7	F	9	1	10	37.0	F	8		8	47.1
	M	16		16	59.3	M	17		17	63.0	M	9		9	52.9
Total		26	1	27		26	1	27		17		17			
TEXTILES & DESIGN		12	1	13	46.2		15	1	16	62.5		15	1	16	56.3
Textiles & Design	F	6		6	46.2	F	9	1	10	62.5	F	8	1	9	56.3
	M	6	1	7	53.8	M	6		6	37.5	M	7		7	43.8
PETROLEUM ENGINEERING		59	4	63	22.2		60	6	66	18.2		53	6	59	20.3
Petroleum Engineering	F	13	1	14	22.2	F	11	1	12	18.2	F	11	1	12	20.3
	M	46	3	49	77.8	M	49	5	54	81.8	M	42	5	47	79.7

Percentage totals for Schools/Institutes relate to the female population
 Note inclusions/exclusions detailed on page 5

POSTGRADUATE RESEARCH STUDENTS BY SCHOOL/PGI/PROGRAMME AND FEE TYPE: 2009/10 - 2011/12

On-campus - Scotland

SCHOOL/Programme	2011/12						2010/11						2009/10																	
	UK		EU		OS		UK		EU		OS		UK		EU		OS													
	ft	pt	ft	pt	ft	pt	ft	pt	ft	pt	ft	pt	ft	pt	ft	pt	ft	pt												
UNIVERSITY TOTAL	182	22	204	79	10	89	255	13	268	561	156	21	177	74	8	82	249	14	263	522	135	22	157	80	19	99	218	19	237	493
BUILT ENVIRONMENT	20	6	26	2	2	61	7	68	96	18	4	22	4	4	51	5	56	82	82	15	5	20	5	2	7	36	8	44	71	
Architectural Eng					1	1		1	1																					
Civil Engineering	8	2	10	1	18	1	19	29	29	4	2	6	2	2	19	19	19	27	27	5	2	7	3	3	11	2	13	23	23	
Construction Management & Surveying	7	3	10	1	25	5	30	41	41	7	2	9	1	1	21	4	25	35	35	6	3	9	1	2	3	13	6	19	31	
Urban Studies	5	1	6	1	17	1	18	25	25	7	7	7	1	1	11	1	12	20	20	4		4	1	1	12		12	17	17	
ENGINEERING & PHYSICAL SCIENCES	101	2	103	53	3	56	60	1	61	220	82	1	83	53	53	65	2	67	203	83	3	86	58	5	63	65	2	67	216	
Chemical Engineering	6	6	12	2	2	7	7	15	15	3	3	2	2	2	9	9	9	14	14	3	3	3	5	5	10	10	10	18	18	
Chemistry	17	17	34	7	7	6	6	30	30	18	18	6	6	6	6	6	6	30	30	24	24	24	5	5	8	8	8	37	37	
Electrical, Electronic & Computer Engineering	8	1	9	8	2	10	16	16	35	8	1	9	12	12	17	17	17	38	38	10	1	11	17	1	18	16	16	45	45	
Mechanical Engineering	17	17	34	1	12	15	15	44	44	13	13	6	6	6	6	6	19	20	39	9	2	11	9	3	12	21	21	44	44	
Physics	53	1	54	25	16	1	17	96	96	40	40	27	27	27	14	1	15	82	82	37	37	37	22	1	23	10	2	12	72	
LIFE SCIENCES	20	3	23	1	1	29	1	30	54	17	4	21	2	1	3	21	1	22	46	7	4	11	2	3	5	18	4	22	38	
Biology	15	2	17	1	1	24	1	25	43	10	3	13	2	2	17	1	18	33	33	4	2	6	2	2	4	17	4	21	31	
Life Sciences General	2	1	3	1	1	1	1	4	4	1	1	1	1	1	1	1	1	2	2											
Psychology	2	2	4	3	3	3	3	5	5	4	1	5	1	1	3	3	3	9	9	1	2	3	1	1	1	1	1	5	5	
Sport & Exercise Science	1	1	2	1	1	1	1	2	2	2	2	2	2	2	2	2	2	2	2	2	2	2	2	2	2	2	2	2	2	
MANAGEMENT & LANGUAGES	7	4	11	8	4	12	18	1	19	42	4	5	9	6	3	9	19	1	20	38	5	4	9	4	4	8	14	1	15	32
Accountancy & Finance	2	1	3	1	1	5	5	9	9	1	1	2	2	2	4	4	4	8	8											
Economics	2	2	4	1	1	5	5	8	8	2	2	2	1	1	5	5	8	8	8	1	1	1	2	2	2	2	2	5	5	
Languages	2	2	4	3	2	5	4	4	11																					
Management	3	1	4	3	2	5	4	1	5	14	1	2	3	1	2	3	6	1	7	13	2	1	3	3	3	3	1	4	10	
MATHEMATICAL & COMPUTER SCIENCES	24	5	29	11	2	13	30	1	31	73	28	5	33	4	3	7	30	1	31	71	20	2	22	4	5	9	29	1	30	61
Actuarial Mathematics & Statistics	2	1	3	1	1	1	1	5	5	2	1	3	3	3	5	5	5	8	8	1	1	1	1	1	1	1	1	9	10	
Computer Science	10	3	13	6	2	8	19	1	20	41	11	3	14	3	3	6	15	1	16	36	11	2	13	2	5	7	13	1	14	34
Mathematics	12	1	13	4	4	10	10	27	27	15	1	16	1	1	10	10	27	27	27	8	8	8	2	2	2	7	7	7	17	17
TEXTILES & DESIGN	3	1	4	4	9	9	9	13	13	3	1	4	1	1	11	11	11	16	16	1	1	2	1	1	1	1	13	13	16	16
PETROLEUM ENGINEERING	7	1	8	4	1	5	48	2	50	63	4	1	5	4	1	5	52	4	56	66	4	3	7	6	6	43	3	46	59	

Note inclusions/exclusions detailed on page 5

POSTGRADUATE RESEARCH FRESHER STUDENTS BY GENDER: 2009/10 - 2011/12

On-campus - Scotland

	2011/12			2010/11			2009/10		
	Gen.	Total	%	Gen.	Total	%	Gen.	Total	%
UNIVERSITY TOTAL		129	29.5		146	34.9		84	28.6
BUILT ENVIRONMENT		19	26.3		22	31.8		15	53.3
Architectural Engineering	F			F	1	100	F		
	M			M			M		
Total					1				
Civil Engineering	F	2	50.0	F	3	33.3	F	3	75.0
	M	2	50.0	M	6	66.7	M	1	25.0
Total		4			9			4	
Construction Management & Surveying	F	2	18.2	F	1	14.3	F	2	40.0
	M	9	81.8	M	6	85.7	M	3	60.0
Total		11			7			5	
Urban Studies	F	1	25.0	F	3	60.0	F	3	50.0
	M	3	75.0	M	2	40.0	M	3	50.0
Total		4			5			6	
ENGINEERING & PHYSICAL SCIENCES		48	20.8		42	28.6		39	15.4
Chemical Engineering	F	5	71.4	F	2	66.7	F		
	M	2	28.6	M	1	33.3	M		
Total		7			3				
Chemistry	F	1	16.7	F	4	57.1	F	2	25.0
	M	5	83.3	M	3	42.9	M	6	75.0
Total		6			7			8	
Electrical, Electronic & Computer Engineering	F	1	25.0	F			F	1	14.3
	M	3	75.0	M	6	100	M	6	85.7
Total		4			6			7	
Mechanical Engineering	F	1	7.1	F	2	33.3	F	2	25.0
	M	13	92.9	M	4	66.7	M	6	75.0
Total		14			6			8	
Physics	F	2	11.8	F	4	20.0	F	1	6.3
	M	15	88.2	M	16	80.0	M	15	93.8
Total		17			20			16	
LIFE SCIENCES		13	38.5		19	63.2		7	42.9
Biology	F	5	41.7	F	8	66.7	F	2	40.0
	M	7	58.3	M	4	33.3	M	3	60.0
Total		12			12			5	
Life Sciences	F			F	1	50.0	F		
	M	1	100	M	1	50.0	M		
Total		1			2				
Psychology	F			F	3	75.0	F	1	50.0
	M			M	1	25.0	M	1	50.0
Total					4			2	
Sport & Exercise Science	F			F			F		
	M			M	1	100	M		
Total					1				
MANAGEMENT & LANGUAGES		15	26.7		16	43.8		6	33.3
Accountancy & Finance	F			F	1	33.3	F	1	100
	M	4	100	M	2	66.7	M		
Total		4			3			1	
Economics	F	1	25.0	F	2	50.0	F		
	M	3	75.0	M	2	50.0	M		
Total		4			4				
Languages	F	1	33.3	F	3	60.0	F		
	M	2	66.7	M	2	40.0	M	1	100
Total		3			5			1	
Management	F	2	50.0	F	1	25.0	F	1	25.0
	M	2	50.0	M	3	75.0	M	3	75.0
Total		4			4			4	
MATHEMATICAL & COMPUTER SCIENCES		21	42.9		28	28.6		11	36.4
Actuarial Mathematics & Statistics	F	1	33.3	F			F		
	M	2	66.7	M	1	100.0	M		
Total		3			1				
Computer Science	F	5	38.5	F	4	28.6	F	1	20.0
	M	8	61.5	M	10	71.4	M	4	80.0
Total		13			14			5	
Mathematics	F	3	60.0	F	4	30.8	F	3	50.0
	M	2	40.0	M	9	69.2	M	3	50.0
Total		5			13			6	
TEXTILES & DESIGN		3	66.7		4	75.0		1	
Textiles & Design	F	2	66.7	F	3	75.0	F		
	M	1	33.3	M	1	25.0	M	1	100
PETROLEUM ENGINEERING		10	30.0		15	6.7		5	20.0
Petroleum Engineering	F	3	30.0	F	1	6.7	F	1	20.0
	M	7	70.0	M	14	93.3	M	4	80.0

Percentage totals for Schools/Institutes relate to the **female** population

Note inclusions/exclusions detailed on page 5

Sport & Exercise Science was closed to new entrants after 2010/11

UNDERGRADUATE STUDENTS BY SCHOOL/PROGRAMME, ATTENDANCE LEVEL AND GENDER: 2008/09 - 2011/12

On-campus - Dubai

SCHOOL/Programme	2011/12				2010/11				2009/10				2008/09							
	Gend.	ft	pt	Total %	Gend.	ft	pt	Total %	Gend.	ft	pt	Total %	Gend.	ft	pt	Total %				
UNIVERSITY TOTAL		1557	14	1571		1071	27	1098		675	36	711		396	16	412				
BUILT ENVIRONMENT		107	14	121		50	26	76		22	35	57		21	16	37				
Architectural Engineering	F	13		13	56.5															
	M	10		10	43.5															
		23		23																
Civil Engineering	F	16		16	19.0	F	10		10	20.8	F	5		5	26.3	F				
	M	66	2	68	81.0	M	38		38	79.2	M	14		14	73.7	M				
		82	2	84			48		48			19		19						
Construction Management & Surveying	F					F		2	2	7.1	F		2	2	5.3	F	2	1	3	8.1
	M	2	12	14	100	M	2	24	26	92.9	M	3	33	36	94.7	M	19	15	34	91.9
		2	12	14			2	26	28			3	35	38			21	16	37	
ENGINEERING & PHYSICAL SCIENCES		461		461		323	1	324		268		268		160		160				
Combined Studies (EPS)	F																			
	M	4		4	100															
		4		4																
Degree Entry Prog. In Engineering	F	18	18	16.5	F	8	8	11.4	F	4	4	5.2	F	2	2	4.9				
	M	91		91	83.5	M	62		62	88.6	M	73		73	94.8	M	39		39	95.1
		109		109			70		70			77		77		41	41			
Electrical, Electronic & Computer Eng	F	22	22	19.1	F	16	16	19.0	F	15	15	24.6	F	7	7	23.3				
	M	93		93	80.9	M	68		68	81.0	M	46		46	75.4	M	23		23	76.7
		115		115			84		84			61		61		30	30			
Mechanical Engineering	F	26	26	11.2	F	18	18	10.6	F	14	14	10.8	F	6	6	6.7				
	M	207		207	88.8	M	151	1	152	89.4	M	116		116	89.2	M	83		83	93.3
		233		233			169	1	170			130		130		89	89			
LIFE SCIENCES		15		15		80		80		52	0	52		34		34				
Psychology	F	9		9	60.0															
	M	6		6	40.0															
		15		15																
MANAGEMENT & LANGUAGES		852		852		647		647		362	1	363		215		215				
Accountancy & Finance	F	159		159	48.3	F	109		109	57.7	F	37		37	41.6	F	19		19	35.8
	M	170		170	51.7	M	80		80	42.3	M	52		52	58.4	M	34		34	64.2
		329		329			189		189			89		89		53	53			
Management	F	208		208	39.8	F	195		195	42.6	F	118		118	43.1	F	56		56	34.6
	M	315		315	60.2	M	263		263	57.4	M	155	1	156	56.9	M	106		106	65.4
		523		523			458		458			273	1	274		162	162			
MATHEMATICAL & COMP SCIENCES		19		19																
Computer Science	F	4		4	100															
	M	15		15	100															
TEXTILES		103		103		51		51		23		23								
Textiles and Design	F	98		98	95.1	F	51		51	100	F	22		22	95.7					
	M	5		5	4.9	M					M	1		1	4.5					

The above numbers are excluded from student numbers reported on previous pages

POSTGRADUATE STUDENTS BY SCHOOL/PROGRAMME, ATTENDANCE LEVEL AND GENDER: 2008/09 - 2011/12

On-campus - Dubai

SCHOOL/Programme	2011/12				2010/11				2009/10				2008/09							
	Gend.	ft	pt	Tot %	Gend.	ft	pt	Tot %	Gend.	ft	pt	Tot %	Gend.	ft	pt	Tot %				
UNIVERSITY TOTAL		220	556	776		309	389	698		270	347	617		200	338	538				
BUILT ENVIRONMENT		50	253	303		43	231	274		54	257	311		35	250	285				
Civil Engineering	F	1	3	4	30.8															
	M	3	6	9	69.2															
		4	9	13																
Construction Management & Surveying	F	7	28	35	13.3	F	8	30	38	15.4	F	6	22	28	9.5	F	6	22	28	10.2
	M	35	193	228	86.7	M	31	177	208	84.6	M	46	221	267	90.5	M	28	219	247	89.8
		42	221	263			39	207	246			52	243	295		34	241	275		
Urban Studies	F	1	7	8	29.6	F	1	7	8	28.6	F	1	5	6	37.5	F	1	1	10.0	
	M	3	16	19	70.4	M	3	17	20	71.4	M	1	9	10	62.5	M	1	8	9	90.0
		4	23	27			4	24	28			2	14	16		1	9	10		
ENGINEERING & PHYSICAL SCIENCES		23	50	73		21	39	60		9	21	30		4	13	17				
Mechanical Engineering	F	6	1	7	9.6	F	6	1	7	11.7	F	3	1	4	13.3	F	4	1	5	29.4
	M	17	49	66	90.4	M	15	38	53	88.3	M	6	20	26	86.7	M		12	12	70.6
		23	50	73			21	39	60			9	21	30		4	13	17		
LIFE SCIENCES		6	3	9		197		197		89	0	89		53		53				
Psychology	F	5	1	6	66.7	F	109		109	57.7	F	37		37	41.6	F	19		19	35.8
	M	1	2	3	33.3	M	80		80	42.3	M	52		52	58.4	M	34		34	64.2
		6	3	9			189		189			89		89		53	53			
MANAGEMENT & LANGUAGES		73	120	193		85	88	173		51	65	116		20	64	84				
Accountancy & Finance	F	6	7	13	40.6	F	5	5	10	35.7										
	M	7	12	19	59.4	M	8	10	18	64.3										
		13	19	32			13	15	28											
Management	F	24	38	62	38.5	F	27	26	53	36.6	F	18	25	43	37.1	F	9	27	36	42.9
	M	36	63	99	61.5	M	45	47	92	63.4	M	33	40	73	62.9	M	11	37	48	57.1
		60	101	161			72	73	145			51	65	116		20	64	84		
MATHEMATICAL & COMP SCIENCES		12	22	34		19	18	37		22	4	26		25	5	30				
Computer Science	F	2	7	9	26.5	F	1	5	6	16.2	F	6	2	8	30.8	F	6	3	9	30.0
	M	10	15	25	73.5	M	18	13	31	83.8	M	16	2	18	69.2	M	19	2	21	70.0
PETROLEUM ENGINEERING		46	21	67		29	13	42		39		39		34	6	40				
Petroleum Engineering	F	2	3	5	7.5	F	2	5	7	16.7	F	5	5	12.8	F	3	3	7.5		
	M	44	18	62	92.5	M	27	8	35	83.3	M	34		34	87.2	M	31	6	37	92.5
EBS (MBA)		10	87	97		112		112		95		95		82		82				
Edinburgh Business School	F	1	15	16	16.5	F	29		29	25.9	F	26		26		F	22		22	
	M	9	72	81	83.5	M	83		83	74.1	M	69		69		M	60		60	

UNDERGRADUATE INCOMING EXCHANGE, NON-GRADUATING AND VISITING STUDENTS: 2009/10 - 2011/12

SCHOOL/Programme	2011/12						2010/11						2009/10								
	EU/UK			OS			EU/UK			OS			EU/UK			OS					
	ft	pt	Tot.	ft	pt	Tot.	Full Tot.	ft	pt	Tot.	ft	pt	Tot.	Full Tot.	ft	pt	Tot.	ft	pt	Tot.	Full Tot.
UNIVERSITY TOTAL	113	29	142	16	16	158		124	1	125	16	1	17	142	129	3	132	16	1	17	149
BUILT ENVIRONMENT	9		9	2		2	11	10		10	5		5	15	9		9				9
ENGINEERING & PHYSICAL SCIENCES	25	24	49	4		4	53	20		20			20	20	2	22					22
LIFE SCIENCES		1	1				1														
MANAGEMENT & LANGUAGES	77	1	78	3		3	81	90	1	90	7	1	42	132	97	1	98	13	1	14	112
MATHEMATICAL & COMP SCIENCES	2		2	4		4	6	2		2	2		2	4	2		2	3		3	5
TEXTILES & DESIGN		3	3	3		3	6	2		2	2		2	4	1		1				1

The above numbers are excluded from student numbers reported on previous pages

The EU/UK numbers included the following number of UK students: 2011/12, 3; 2010/11, 1; 2009/10, 3

UNDERGRADUATE FRESHERS: DOMICILES 2011/12 (ranked by population size)

On-campus - Scotland

Academic year of entry	Year 1	Year 2	Year 3	Year 4	Year 5	Total: All Years	2010/11 Total	2009/10 Total	2008/09 Total
UNIVERSITY TOTAL	1489	245	170	4	7	1895	1529	2210	1913
UK	1120	145	46			1311	1087	1546	1323
Scotland	905	119	44			1068	875	1229	1052
Rest of UK	215	26	2			243	212	317	271
EU	181	16	102	2	7	308	232	460	397
France	8	1	90	2		101	65	293	252
Germany	20	2	3		7	32	59	43	46
Lithuania	25	1	1			27	8	3	4
Greece	21	2	2			25	13	29	27
Ireland	17	2	2			21	22	22	26
Sweden	11	1	3			15	5	10	2
Italy	11					11	6	6	3
Latvia	10					10	9		3
Finland	10					10	5	6	3
Spain	8	1				9	5	6	3
Bulgaria	7	1				8	7	6	2
Poland	7	1				8	5	12	15
Cyprus	5	2	1			8	7	4	5
Belgium	6					6	6	4	1
Other EU	15	2				17	10	16	5
Overseas non-EU	188	65	21	2		276	210	204	193
China	38	8	18	2		66	45	38	51
Norway	32					32	22	23	24
Malaysia	9	9	1			19	16	21	16
Kazakhstan	7	5				12	9	6	4
Saudi Arabia	9					9	43	45	36
India	3	4				7	10	3	6
Brunei		5				5	3	2	1
Other Overseas non-EU	45	17	1			63	62	66	55

POSTGRADUATE TAUGHT COURSE FRESHER STUDENTS: DOMICILES 2008/09 - 2011/12
(ranked by population size)

Academic year of entry	Year 1	Year 2	Year 3	2011/12 Total	2010/11 Total	2009/10 Total	2008/09 Total
UNIVERSITY TOTAL	1295			1295	1371	1344	1344
UK	306			306	384	339	323
Scotland	236			236	197	249	254
Rest of UK	70			70	187	90	69
EU	276			295	260	326	214
Greece	80			99	56	103	80
Germany	65			65	52	45	22
France	37			37	34	40	37
Spain	26			26	75	24	11
Ireland	19			19	0	74	39
Poland	9			9	3	8	7
Cyprus	8			8	6	6	6
Netherlands	7			7			
Italy	6			6	7	8	3
Other EU	19			19	27	18	9
Overseas non-EU	713			713	723	679	500
China	264			264	175	129	82
Thailand	60			60	44	13	16
Nigeria	58			58	86	83	66
India	45			45	91	99	70
Kazakhstan	36			36	24	19	11
Saudi Arabia	25			25	73	82	33
Ghana	20			20	2	15	15
Malaysia	19			19	7	19	16
Taiwan	17			17	10	6	8
Libya	16			16	25	57	23
U.S.A.	11			11	19	9	10
Syria	8			8	8	9	4
Norway	7			7	12	9	4
Uganda	7			7	2	2	3
Jordan	6			6	2	2	2
Oman	6			6	12	6	13
United Arab Emirates	6			6			
Trinidad & Tobago	6			6			
Iran	5			5	9	8	9
Russia	5			5	6	5	2
Sudan	5			5	1	3	4
Colombia	5			5	2	1	4
Other Overseas non-EU	76			76	113	103	105

Figures for 2008 to 2012 exclude a small number of Edinburgh Business School fresher students.

POSTGRADUATE RESEARCH FRESHER STUDENT: DOMICILES 2008/09 - 2011/12
(ranked by population size)

Academic year of entry	Year 1	Year 2	Year 3	2011/12 Total	2010/11 Total	2009/10 Total	2008/09 Total
Univ Total	123	5	1	129	146	84	95
UK	47	2		49	73	40	36
Scotland	34	1		35	33	29	30
Rest of UK	13	1		14	40	11	6
EU	23	1		24	12	14	17
Italy	6			6	2	2	
Greece	4	1		5	1	2	1
Poland	4			4	1		
Germany	3			3	1	4	5
France	2			2	2	3	3
Cyprus	2			2		1	1
Slovakia	1			1			
Portugal	1			1		1	
Finland					2		
Spain					2		2
Netherlands					1		
Ireland						1	1
Austria							1
Belgium							1
Denmark							2
Overseas non-EU	53	2	1	56	44	24	40
Syria	7	1		8	6	4	3
India	5			5	5	1	2
Iran	5	1		6	5		2
China	5		1	6	7	4	6
Other Overseas non-EU	31			31	21	15	27

NON-UK DOMICILED STUDENTS (UG, PGT, PGR) BY COUNTRY: 2006/07 - 2011/12
On-campus - Scotland

CONTINENT/COUNTRY	2011/12	%	2010/11	%	2009/10	%	2008/09	%	2007/08	%	2006/07	%
UNIVERSITY TOTAL	2,742	100	2,476	100	2,697	100	2,302	100	2,085	100	1,900	100
China Republic	471	17.2	343	13.9	279	10.3	229	9.9	229	11.0	279	14.7
France*	189	6.9	178	7.2	412	15.3	353	15.3	334	16.0	310	16.3
Greece	173	6.3	141	5.7	294	10.9	262	11.4	173	8.3	111	5.8
Germany	152	5.5	160	6.5	140	5.2	127	5.5	131	6.3	120	6.3
Saudi Arabia	120	4.4	166	6.7	127	4.7	62	2.7	39	1.9	25	1.3
Irish Republic	96	3.5	112	4.5	153	5.7	129	5.6	147	7.1	120	6.3
India	95	3.5	131	5.3	155	5.7	113	4.9	129	6.2	111	5.8
Nigeria	91	3.3	109	4.4	106	3.9	94	4.1	92	4.4	77	4.1
Malaysia	88	3.2	73	2.9	90	3.3	79	3.4	65	3.1	64	3.4
Norway	85	3.1	78	3.2	61	2.3	54	2.3	49	2.4	42	2.2
Thailand	74	2.7	52	2.1	20	0.7	23	1.0	12	0.6	10	0.5
Spain	60	2.2	95	3.8	40	1.5	31	1.3	42	2.0	36	1.9
Kazakhstan	60	2.2	42	1.7	29	1.1	16	0.7	13	0.6	6	0.3
Poland	56	2.0	50	2.0	71	2.6	67	2.9	64	3.1	48	2.5
Lithuania	51	1.9	22	0.9	9	0.3	6	0.3	3	0.1	3	0.2
Libyan Arab Republic	47	1.7	58	2.3	79	2.9	39	1.7	18	0.9	29	1.5
Italy	45	1.6	33	1.3	32	1.2	26	1.1	27	1.3	24	1.3
Iran Islamic Republic	41	1.5	38	1.5	34	1.3	36	1.6	17	0.8	23	1.2
Syrian Arab Republic	40	1.5	30	1.2	32	1.2	26	1.1	39	1.9	34	1.8
United Arab Emirates	39	1.4	37	1.5	21	0.8	15	0.7	10	0.5	8	0.4
USA	32	1.2	31	1.3	28	1.0	29	1.3	23	1.1	24	1.3
Sweden	28	1.0	21	0.8	24	0.9	15	0.7	14	0.7	15	0.8
Cyprus	26	0.9	23	0.9	17	0.6	19	0.8	12	0.6	12	0.6
Ghana	26	0.9	6	0.2	20	0.7	19	0.8	23	1.1	17	0.9
Pakistan	24	0.9	33	1.3	25	0.9	34	1.5	33	1.6	42	2.2
Oman	24	0.9	24	1.0	16	0.6	20	0.9	17	0.8	14	0.7
Bulgaria	24	0.9	12	0.5	12	0.4	5	0.2	5	0.2	4	0.2
Finland	23	0.8	19	0.8	11	0.4	6	0.3	4	0.2	2	0.1
Latvia	23	0.8	13	0.5	9	0.3	8	0.3	4	0.2	4	0.2
Russia	19	0.7	14	0.6	17	0.6	13	0.6	12	0.6	7	0.4
Tawain	19	0.7	13	0.5	8	0.3	11	0.5	16	0.8	20	1.1
Hong Kong	18	0.7	15	0.6	15	0.6	12	0.5	9	0.4	8	0.4
Mexico	17	0.6	16	0.6	14	0.5	23	1.0	11	0.5	12	0.6
Netherlands	15	0.5	10	0.4	6	0.2	8	0.3	7	0.3	6	0.3
Belgium	13	0.5	12	0.5	14	0.5	13	0.6	13	0.6	8	0.4
Vietnam - North	13	0.5	11	0.4	5	0.2					2	0.1
Iraq	11	0.4	7	0.3	5	0.2	2	0.1			1	0.1
Brunei Darussalam	10	0.4	7	0.3	4	0.1	3	0.1	2	0.1	1	0.1
Jordan	10	0.4	5	0.2	9	0.3	6	0.3	7	0.3	2	0.1
OTHER EUROPE	123											
OTHER AFRICA	72											
OTHER ASIA	52											
OTHER AMERICAS	41											
OTHER AUSTRALIA	6											

Percentages are expressed as a proportion of the non-UK total

Top 10 domiciles by population size are highlighted in each year prior to 2011/12

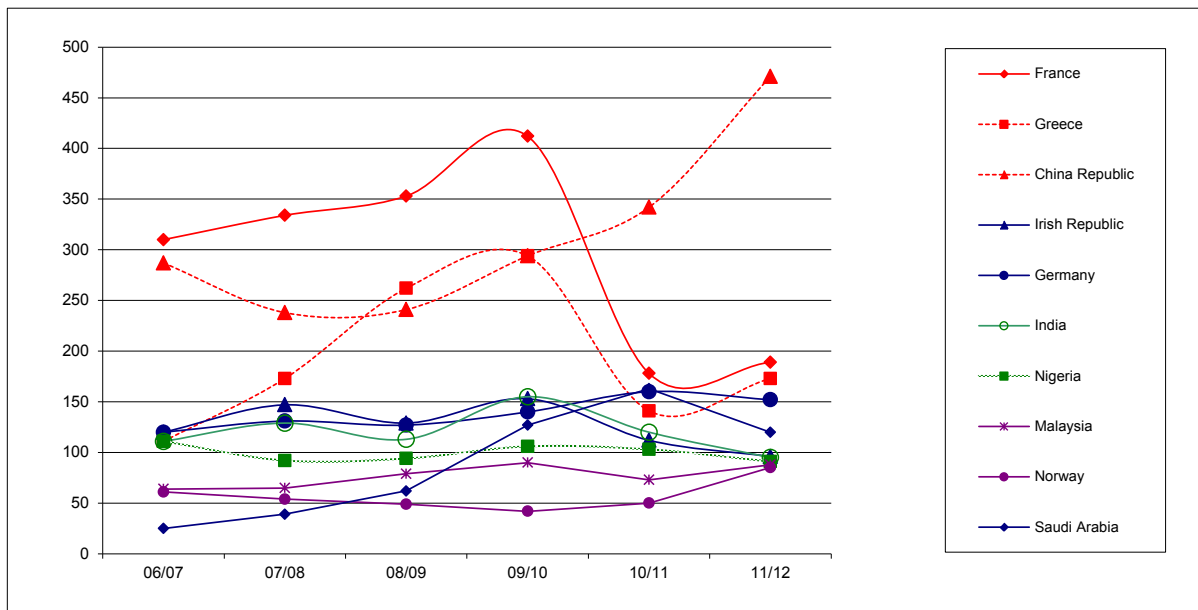
UK dependent countries are not included

*Including any French dependencies

Grouped 'other' data by continent is reported for 2012/11 and earlier years in the relevant annual publications for each year

Inclusions/exclusions detailed on page 5 apply. Note that total non-UK numbers in this report will not match exactly those indicated on page 5 which assigns students to 'other EU' and 'overseas' categories on the basis of the "fees status" assigned to the student

Top 10 domiciles by population size (on-campus students studying in Scotland): trends 2006/07 - 2011/12



ALL ON-CAMPUS STUDENTS (Scotland and Dubai) BY STUDY LEVEL AND DOMICILE: 2011/12

	SBE			EPS			SLS			SML			MACS			TEX			IPE			EBS			DUBAI			FULL TOTAL	
	UG	PGT	TOT	UG	PGT	TOT	UG	PGT	TOT	UG	PGT	TOT	UG	PGT	TOT	UG	PGT	TOT	UG	PGT	TOT	UG	PGT	TOT	UG	PGT	TOT		
University Total	754	247	1001	1377	165	1762	679	125	858	1462	423	42	1927	812	247	73	1132	554	22	13	589	195	63	258	31	1571	766	2337	9991
UK	621	110	731	1117	41	1168	578	45	623	1016	72	15	1103	614	39	32	685	498	10	4	512	47	8	55	17	9	10	19	5067
United Arab Emirates	4	2	6	14	2	16	1	1	2	3	4	7	7	1	1	2	2	2	2	2	2	2	1	1	2	1027	370	1397	1436
India	1	7	8	10	3	13	1	8	9	6	10	2	18	8	11	3	22	1	2	3	6	3	9	6	184	126	310	408	
China Rep	6	41	47	52	13	65	4	26	30	62	96	1	169	1	4	5	5	10	10	20	1	4	11	15	4	11	15	319	
Nigeria	1	8	9	16	10	26	3	1	4	2	6	1	9	1	4	5	5	28	5	33	4	4	4	4	39	39	78	168	
Greece	20	8	28	16	13	29	9	2	11	22	38	1	61	6	16	4	26	3	1	4	4	4	4	4	167	1	1	167	
France	9	3	12	55	13	68	9	1	10	48	10	58	57	86	2	145	5	4	2	6	1	1	1	1	151	2	2	151	
Chile	4	2	6	16	12	28	11	6	17	21	45	2	68	5	1	4	10	1	4	1	1	3	4	1	2	2	2	4	151
Germany	1	1	2	4	6	10	1	1	2	1	1	1	2	2	1	3	4	1	1	1	1	1	1	1	91	33	124	145	
Pakistan	8	4	12	20	5	25	6	3	9	18	5	23	4	8	12	24	4	4	4	4	3	1	4	1	9	5	14	130	
Kingdom of Saudi Arabia	24	7	31	31	8	39	3	1	4	12	3	7	15	2	3	2	13	13	1	1	23	2	2	2	30	2	2	32	92
Irish Republic	3	1	4	5	11	16	1	1	2	4	7	11	11	5	4	9	9	9	9	9	23	2	2	2	30	2	2	32	82
Kazakhstan	2	1	3	3	2	5	2	6	8	6	5	69	2	1	1	1	1	1	1	1	1	1	1	1	1	1	1	1	85
Norway	3	1	4	7	3	10	3	1	4	3	1	4	6	4	10	14	5	6	6	6	3	3	3	3	2	2	2	4	82
Malaysia	3	3	6	10	11	21	6	3	9	10	14	1	25	3	3	7	7	7	7	7	4	4	4	4	15	19	34	61	
Thailand	1	3	4	6	2	8	1	1	2	1	1	2	3	1	1	2	2	2	2	2	4	4	4	4	15	19	34	61	
Iran Islamic Rep	2	2	4	3	7	10	3	2	5	10	14	1	25	3	3	7	7	7	7	7	9	9	9	9	15	19	34	61	
Spain	2	2	4	4	5	9	3	1	4	8	10	11	11	12	7	19	19	19	19	19	2	2	2	2	7	8	15	39	
Poland	3	1	4	5	1	6	3	1	4	8	10	11	11	12	7	19	19	19	19	19	2	2	2	2	7	8	15	39	
Lithuania	6	6	12	6	6	12	8	1	9	10	11	11	11	12	7	19	19	19	19	19	2	2	2	2	7	8	15	39	
Finland	1	1	2	1	1	2	1	1	2	1	1	1	1	1	1	1	1	1	1	1	1	1	1	1	1	1	1	1	59
Oman	3	4	7	11	3	14	1	1	2	4	4	5	5	5	5	5	5	5	5	5	3	3	3	3	13	13	13	36	
Syrian Arab Republic	1	1	2	1	1	2	1	1	2	1	1	1	1	1	1	1	1	1	1	1	1	1	1	1	2	2	2	4	82
Egypt	2	1	3	4	2	6	1	1	2	1	1	1	1	2	1	1	1	1	1	1	1	1	1	1	2	2	2	4	82
Italy	1	1	2	3	4	7	1	1	2	1	1	1	1	2	1	1	1	1	1	1	1	1	1	1	2	2	2	4	82
USA	2	3	5	7	2	9	1	1	2	1	1	1	1	1	1	1	1	1	1	1	1	1	1	1	2	2	2	4	82
Libyan Arab Republic	2	2	4	6	1	7	1	1	2	1	1	1	1	1	1	1	1	1	1	1	1	1	1	1	2	2	2	4	82
Ghana	1	2	3	3	1	4	1	1	2	1	1	1	1	1	1	1	1	1	1	1	1	1	1	1	1	6	6	6	14
Jordan	1	2	3	3	1	4	1	1	2	1	1	1	1	1	1	1	1	1	1	1	1	1	1	1	1	5	5	5	14
Sweden	1	2	3	3	1	4	1	1	2	1	1	1	1	1	1	1	1	1	1	1	1	1	1	1	1	5	5	5	14
Bangladesh	2	1	3	2	1	3	2	1	3	4	4	1	5	4	5	5	5	5	5	5	3	3	3	3	12	12	12	30	
Cyprus	2	1	3	2	1	3	2	1	3	4	4	1	5	4	5	5	5	5	5	5	3	3	3	3	12	12	12	30	
Russia	1	1	2	1	1	2	1	1	2	1	1	1	1	1	1	1	1	1	1	1	1	1	1	1	1	6	6	6	14
Canada	3	3	6	3	3	6	2	1	3	6	2	8	8	2	1	3	3	3	3	3	1	1	1	1	1	5	5	5	14
Bulgaria	1	1	2	1	1	2	1	1	2	1	1	1	1	1	1	1	1	1	1	1	1	1	1	1	1	5	5	5	14
Catar	1	1	2	1	1	2	1	1	2	1	1	1	1	1	1	1	1	1	1	1	1	1	1	1	1	5	5	5	14
Sri Lanka	1	1	2	1	1	2	1	1	2	1	1	1	1	1	1	1	1	1	1	1	1	1	1	1	1	5	5	5	14
Latvia	1	1	2	1	1	2	1	1	2	1	1	1	1	1	1	1	1	1	1	1	1	1	1	1	1	5	5	5	14
Iraq	1	1	2	1	1	2	1	1	2	1	1	1	1	1	1	1	1	1	1	1	1	1	1	1	1	5	5	5	14
Hong Kong	1	2	3	2	2	4	1	1	2	1	1	1	1	1	1	1	1	1	1	1	1	1	1	1	1	5	5	5	14
South Africa	1	2	3	2	2	4	1	1	2	1	1	1	1	1	1	1	1	1	1	1	1	1	1	1	1	5	5	5	14
Taiwan	1	1	2	1	1	2	1	1	2	1	1	1	1	1	1	1	1	1	1	1	1	1	1	1	1	5	5	5	14
Netherlands	1	1	2	1	1	2	1	1	2	1	1	1	1	1	1	1	1	1	1	1	1	1	1	1	1	5	5	5	14
Mexico	1	1	2	1	1	2	1	1	2	1	1	1	1	1	1	1	1	1	1	1	1	1	1	1	1	5	5	5	14
Belgium	1	1	2	1	1	2	1	1	2	1	1	1	1	1	1	1	1	1	1	1	1	1	1	1	1	5	5	5	14
Kenya	1	1	2	1	1	2	1	1	2	1	1	1	1	1	1	1	1	1	1	1	1	1	1	1	1	5	5	5	14
Israel	1	1	2	1	1	2	1	1	2	1	1	1	1	1	1	1	1	1	1	1	1	1	1	1	1	5	5	5	14
Lebanon	1	1	2	1	1	2	1	1	2	1	1	1	1	1	1	1	1	1	1	1	1	1	1	1	1	5	5	5	14
Sudan	3	3	6	3	3	6	1	1	2	1	1	1	1	1	1	1	1	1	1	1	1	1	1	1	1	5	5	5	14
Brunei	6	1	7	6	1	7	1	1	2	1	1	1	1	1	1	1	1	1	1	1	1	1	1	1	1	5	5	5	14
Uganda	1	1	2	1	1	2	1	1	2	1	1	1	1	1	1	1	1	1	1	1	1	1	1	1	1	5	5	5	14
Bahrain	1	1	2	1	1	2	1	1	2	1	1	1	1	1	1	1	1	1	1	1	1	1	1	1	1	5	5	5	14
Singapore	1	1	2	1	1																								

ALL TRANSNATIONAL PROGRAMME STUDENTS BY MODE OF STUDY AND DOMICILE ACTIVE IN THE HESA REPORTING YEAR 20010/11

	SBE			EPS			SLS			MACS			SML			IPE			EBS			FULL TOT		
	ALP	IDL	TOT	ALP	IDL	TOT	ALP	IDL	TOT	ALP	IDL	TOT	ALP	IDL	TOT	ALP	IDL	TOT	ALP	IDL	TOT		ALP	IDL
University Total	1621	296	1917	216	32	248	16	51	67	365	1	366	1211	63	1274	76	450	526	3646	1517	5163	8258	3161	11419
UK	28	223	251		15	15		29	29		10	10	457	14	471		146	146	622	314	936	1107	751	1858
Trinidad & Tobago	110	6	116				6						285		285		10	10	1212	9	1221	1613	25	1638
Hong Kong	489	3	492									418		418					163	36	199	1070	39	1109
Singapore	578	3	581									52	1	53					118	13	131	748	21	769
Egypt	4	4	8					1	1										710	26	736	710	45	755
South Africa	5	5	10					1	1			225		225					355	3	358	355	3	358
Israel	63	4	67			216		1	1										27	13	40	335	18	353
Greece	243	1	244		1	1						7	30	37					22	22	40	250	94	344
Malaysia	5	5	10																6	6	12	291	25	316
Uganda	9	9	18					4	4										291	13	304	291	25	316
Canada	5	5	10																80	109	189	80	168	248
USA	3	3	6					19	19										168	30	198	168	42	210
Zambia	4	4	8																38	3	41	183	7	190
Jamaica	54	4	58					10	10			81		81					38	3	41	183	7	190
Nigeria	35	35	70			6													63	63	126	61	167	167
Iran Islamic Rep	2	2	4					1	1										3	3	6	112	92	60
Switzerland	7	7	14																1	1	2	107	107	31
Mauritius	13	13	26									23		23					75	3	78	98	10	108
Australia	84	3	87					3	3										42	42	84	88	88	88
Bahrain	3	3	6																29	29	58	4	62	62
Russia	38	38	76			4		2	2										64	13	77	7	84	88
Ireland - Republic	2	2	4																3	3	6	25	25	62
Bangladesh	4	4	8																2	2	4	1	79	82
Norway	2	2	4									79		79					10	10	20	62	20	82
Germany	4	4	8																8	8	16	61	61	76
United Arab Emirates	16	16	32					1	1										18	18	36	39	39	75
Sweden	1	1	2																1	1	2	61	61	8
Ukraine	17	17	34					1	1										29	29	58	8	66	66
India	4	4	8																9	9	18	50	50	55
Kenya	1	1	2																17	17	34	45	45	50
China	6	6	12																8	8	16	27	27	46
Malta	11	11	22																8	8	16	45	45	61
Qatar	6	6	12																7	7	14	31	31	45
Kingdom of Saudi Arabia	2	2	4																45	45	90	45	45	47
Serbia	4	4	8																24	24	48	24	24	37
Ghana	1	1	2					1	1										4	4	8	4	4	25
Denmark	4	4	8																7	7	14	16	16	24
Colombia	3	3	6																14	14	28	3	3	23
Pakistan	6	6	12																10	10	20	6	6	22
Oman	6	6	12																5	5	10	10	10	22
Sri Lanka	6	6	12																19	19	38	5	5	22
Zimbabwe	1	1	2																5	5	10	19	19	20
Netherlands	2	2	4					2	2										8	8	16	3	3	16
Kuwait	3	3	6																6	6	12	8	8	15
Spain	1	1	2																3	3	6	7	7	11
Kazakhstan	1	1	2																6	6	12	3	3	14
Indonesia	1	1	2																3	3	6	7	7	11
Japan	1	1	2																6	6	12	3	3	13
Tanzania	6	6	12																13	13	26	13	13	13
Cyprus	3	3	6																4	4	8	4	4	12
Lebanon	3	3	6																11	11	22	11	11	12
Azerbaijan	1	1	2																7	7	14	1	1	11
Mexico	1	1	2					1	1										9	9	18	1	1	11
Vietnam Soc Republic	10	10	20																3	3	6	7	7	11
OTHER AFRICA	4	4	8																12	12	24	62	62	85
OTHER AMERICAS	7	7	14					5	5										15	15	30	1	43	68
OTHER ASIA	1	1	2																2	2	4	31	31	47
OTHER AUSTRALIA	1	1	2																1	1	2	3	3	5
OTHER EUROPE	12	12	24					2	2										13	13	26	28	28	60

Notes: ALP = Study with an Approved Learning Partner

IDL = Study by Independent distance learning

Student numbers include students registered on degree courses who were active in the HESA defined reporting year from 1 August 2010 to 31 July 2011.

At July 2011 an additional 3,800 students, not accounted for in the above figures, had commenced study with Edinburgh Business School but had not yet applied for matriculation to the full degree course. Of these students approximately 2,400 were IDL students with the remainder studying with an ALP. The School therefore had approximately 10,000 active students in total.

	ALP	SLS	SBE	EPS	MACS	SML	IPE	EBS	Total
University Total		16	1649	216	365	1668	76	4268	8258
Bahrain	Bahrain Training Institute		84						84
Bangladesh	Bangladesh Institute of Management Studies					79			79
China	University of Petroleum, East China						9		9
Costa Rica	University para la Cooperacion Internacional							1	1
Denmark	Fokus Limited							4	4
Egypt	Ain Shams University (Commerce)							65	65
	The American University in Cairo							645	645
Egypt Total								710	710
Greece	Centre Euro Mgt Studies (CEMS)		63			6		27	96
	iCon Training International					22			22
	Technical Educational Institute of Athens			31					31
	Technical Educational Institute of Piraeus			185		1			186
Greece Total			63	216		29		27	335
Hong Kong	Hong Kong - Continuous Professional Education		396						396
	Hong Kong College of Engineering		93						93
	The Hong Kong Polytechnic University					418			418
	Hong Kong Cyber University							163	163
Hong Kong Total			489			418		163	1070
Indonesia	University Indonusa Esa Unggul					2			2
Iran	ICTEC (Tehran)				33			59	92
Ireland	HSI Limerick Business School							25	25
Israel	Ramat-Gan College							355	355
Jamaica	B&B University College Ltd	10	54			81		38	183
Kazakhstan	Kazakh-British Technical University						3		3
Malaysia	Imperia Institute of Technology		243						243
	Fajar International College					7			7
Malaysia Total			243			7			250
Malta	The Malta Institute of Management							45	45
Mauritius	Glamis Business School					23		75	98
Norway	Oslo School of Management							62	62
Russia	Tomsk Polytechnic University						64		64
Serbia	English School of Business							45	45
Singapore	Trent Global College of Technology and Management		578						578
	Uptrend Education Pte Ltd					52			52
	East Asia School Business Institute Management							118	118
Singapore Total			578			52		118	748
South Africa	CTI, Bloemfontein Campus				13	4			17
	CTI, Bedfordview Campus				39	30			69
	CTI, Cape Town Campus				29	15			44
	CTI, Durban Campus				19	6			25
	CTI, Durbanville Campus				40	43			83
	CTI, East London Campus				10	13			23
	CTI, Nelspruit Campus				8	10			18
	CTI, Port Elizabeth Campus				15	6			21
	CTI, Nelspruit Campus				19	12			31
	CTI, Port Elizabeth Campus				108	56			164
	CTI, Randburg Campus				25	17			42
	CTI, Vanderbijlpark Campus				7	13			20
South Africa Total					332	225			557
Sri Lanka	Oxford College of Business					10			10
Sweden	Executive Management Institute							61	61
Switzerland	FHNW University Applied Sciences NWSwitzerland							107	107
Trinidad & Tobago	School of Higher Education Ltd (San Fernando)	6	110			183			299
	School of Higher Education Ltd (San Juan)					102			102
	School of Business & Computer Science (T&T)							1212	1212
Trinidad & Tobago Total		6	110			285		1212	1613
UK	West London College					457			457
	Adam Smith College		28						28
UK Total			28			457		622	1107
USA	Network of Excellence in Training							80	80
Uganda	Management and Accounting Training Company Ltd							291	291
Zambia	Zambian Institute (ZICAB)							168	168

APPLICATIONS AND ADMISSIONS

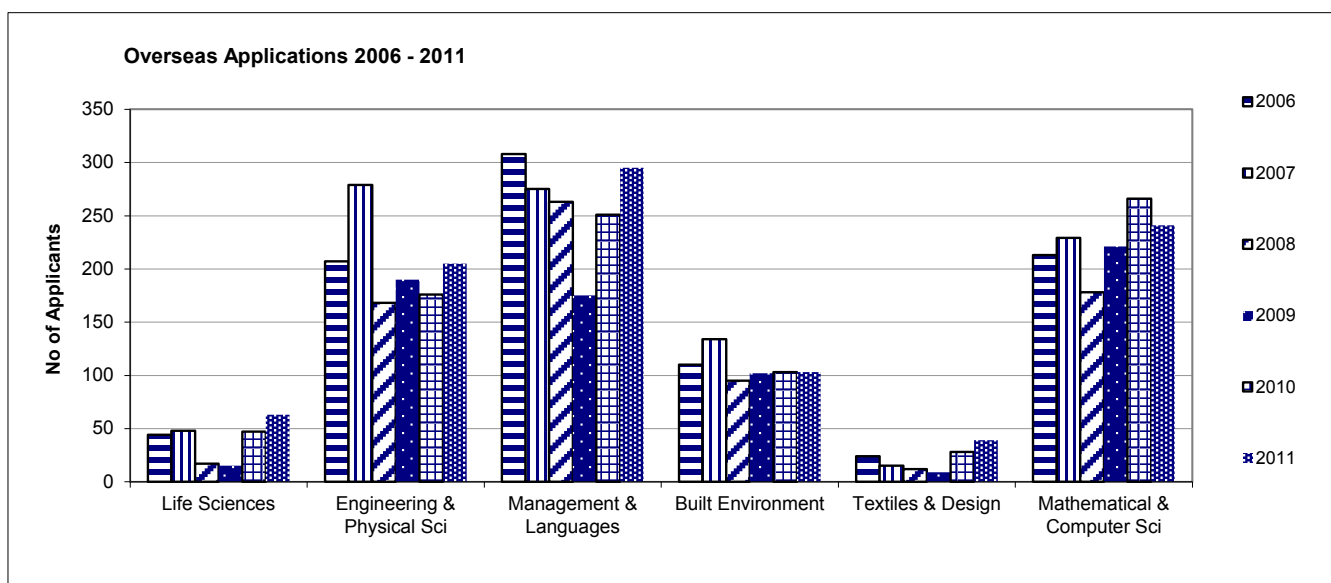
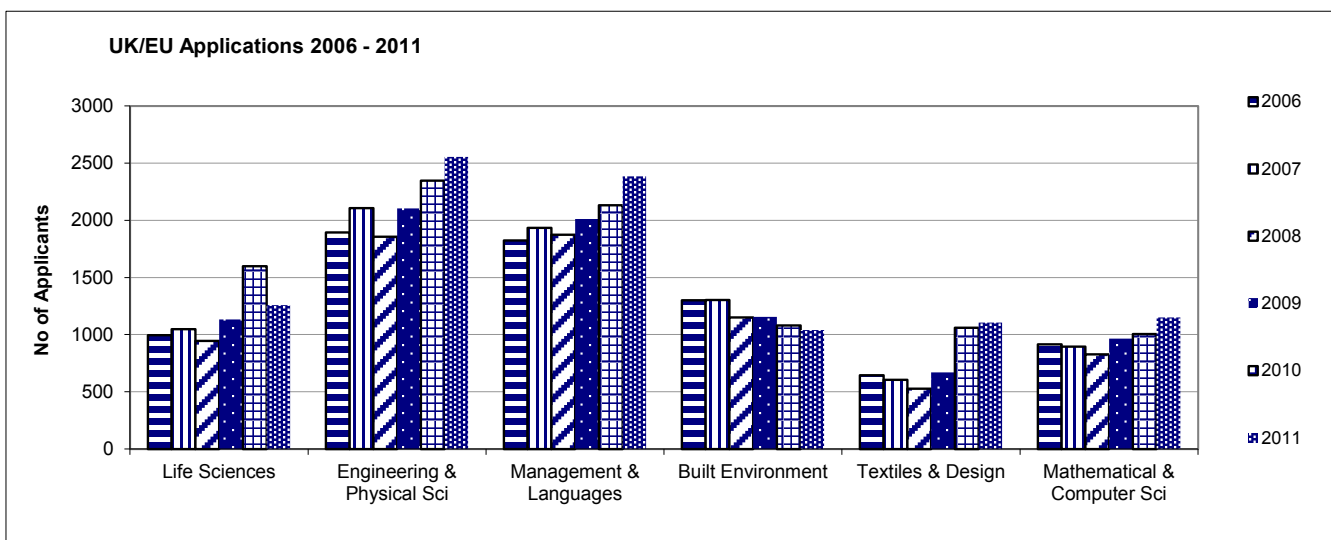
UNDERGRADUATE APPLICATIONS (UCAS): 2007 – 2011

Full application statistics are presented in following pages.

	2011 Entry	2010 Entry	2009 Entry	2008 Entry	2007 Entry
Edinburgh Campus	9076	8562	7759	7095	7990
Scottish Borders Campus	1365	1535	996	823	888
TOTAL	10441	10097	8755	7918	8878

UNDERGRADUATE ENTRANTS: 2007 – 2011

	2011 Entry	2010 Entry	2009 Entry	2008 Entry	2007 Entry
Edinburgh Campus	1607	1293	1929	1630	1560
Scottish Borders Campus	235	181	257	244	222
TOTAL	1842	1474	2186	1874	1782



UNDERGRADUATE UCAS APPLICATION STATISTICS 2007 - 2011

UK/EU Applicants (Residential Status on UCAS form)

SCHOOL/Programme	2011 Entry Apps at 10/10/2011	% change 11/10	2010 Entry Apps at 10/10/2010	% change 10/09	2009 Entry Apps at 10/10/2009	% change 09/08	2008 Entry Apps at 10/10/2008	% change 08/07	2007 Entry Apps at 10/10/2007
UNIVERSITY TOTAL	9495	3	9226	15	8043	11	7265	-8	7938
BUILT ENVIRONMENT	1040	-4	1081	-6	1156	0	1152	-12	1303
Architectural Engineering	151	3	147	21	121	22	99	100	
Civil Engineering	550	5	524	-2	535	11	480	-9	528
Construction Management & Surveying	241	-18	294	-10	325	-1	329	-35	510
Urban Studies	98	-16	116	-34	175	-28	244	-8	265
ENGINEERING & PHYSICAL SCIENCES	2556	9	2347	12	2104	13	1856	-12	2108
Chemical Engineering	432	22	355	-2	363	26	288	-2	294
Chemistry	469	12	418	-8	453	19	380	-25	507
Combined Studies (BSc)	64	56	41	-45	74	12	66	-19	81
Electrical, Electronic & Computer Engineering	300	-6	320	53	209	-3	215	-12	245
Mechanical Engineering	787	11	712	18	603	8	558	-12	631
Physics	401	-3	415	28	324	24	262	-7	283
BEng Engineering	103	20	86	10	78	-10	87	30	67
LIFE SCIENCES	1258	-21	1600	41	1135	20	947	-10	1049
Biology	555	1	551	12	490	27	386	-18	468
Sport & Exercise Science			403	20	336	-8	364	5	346
Psychology	703	9	646	109	309	57	197	-16	235
MANAGEMENT & LANGUAGES	2384	12	2132	6	2012	7	1874	-3	1934
Accountancy & Finance	532	-1	537	-9	592	12	528	7	494
Economics	283	33	212	5	202	-10	224	-9	245
Languages	456	17	391	2	383	9	351	-16	416
Management	931	50	619	10	561	5	536	-7	578
Management (Scottish Borders Campus)	182	-51	373	36	274	17	235	17	201
MATHEMATICAL & COMPUTER SCIENCES	1151	14	1006	4	965	16	829	-8	897
Actuarial Mathematics & Statistics	267	9	244	-4	255	8	237	13	210
Computer Science	412	0	414	17	353	27	279	-20	347
Mathematics	472	36	348	-3	357	14	313	-8	340
TEXTILES AND DESIGN	1106	4	1060	58	671	11	607	-6	647

Overseas Applicants (Residential Status on UCAS form)

SCHOOL/Programme	2011 Entry Apps at 10/10/2011	% change 11/10	2010 Entry Apps at 10/10/2010	% change 10/09	2009 Entry Apps at 10/10/2009	% change 09/08	2008 Entry Apps at 10/10/2008	% change 08/07	2007 Entry Apps at 10/10/2007
UNIVERSITY TOTAL	946	9	871	22	712	-3	733	-25	980
BUILT ENVIRONMENT	103	0	103	1	102	7	95	-29	134
Architectural Engineering	17	-6	18	6	17	42	12	100	
Civil Engineering	52	58	33	-6	35	17	30	-39	49
Construction Management & Surveying	26	-7	28	-13	32	-9	35	-47	66
Urban Studies	8	-67	24	33	18	0	18	-5	19
ENGINEERING & PHYSICAL SCIENCES	205	16	176	-7	190	13	168	-40	279
Chemical Engineering	70	19	59	-11	66	57	42	-37	67
Chemistry	17	55	11	120	5	-38	8	-69	26
Combined Studies (BSc)	2	-67	6			-100	1	-80	5
Electrical, Electronic & Computer Engineering	35	-8	38	-14	44	-27	60	-22	77
Mechanical Engineering	66	38	48	-21	61	36	45	-46	83
Physics	11	83	6	-40	10	0	10	-44	18
BEng Engineering	4	-50	8	100	4	100	2	-33	3
LIFE SCIENCES	63	34	47	213	15	-12	17	-65	48
Biology	40	48	27	125	12	-25	16	-56	36
Sport & Exercise Science			4	100	2	100	1	-86	7
Psychology	23	44	16	1500	1			-100	5
MANAGEMENT & LANGUAGES	295	18	251	43	175	-33	263	-4	275
Accountancy & Finance	81	19	68	39	49	-52	102	32	77
Economics	43	39	31	11	28	-7	30	-43	53
Languages	6	-25	8	0	8	-20	10	67	6
Management	127	81	70	46	48	-33	72	-3	74
Management (Scottish Borders Campus)	38	-49	74	76	42	-14	49	-25	65
MATHEMATICAL & COMPUTER SCIENCES	241	-9	266	20	221	24	178	-22	229
Actuarial Mathematics & Statistics	180	3	175	14	153	26	121	-7	130
Computer Science	29	-28	40	29	31	-26	42	-16	50
Mathematics	32	-37	51	38	37	147	15	-69	49
TEXTILES AND DESIGN	39	39	28	211	9	-25	12	-20	15

Sport & Exercise Science was closed to new entrants after 2010/11

UNDERGRADUATE ADMISSIONS 2007 - 2011 ENTRY

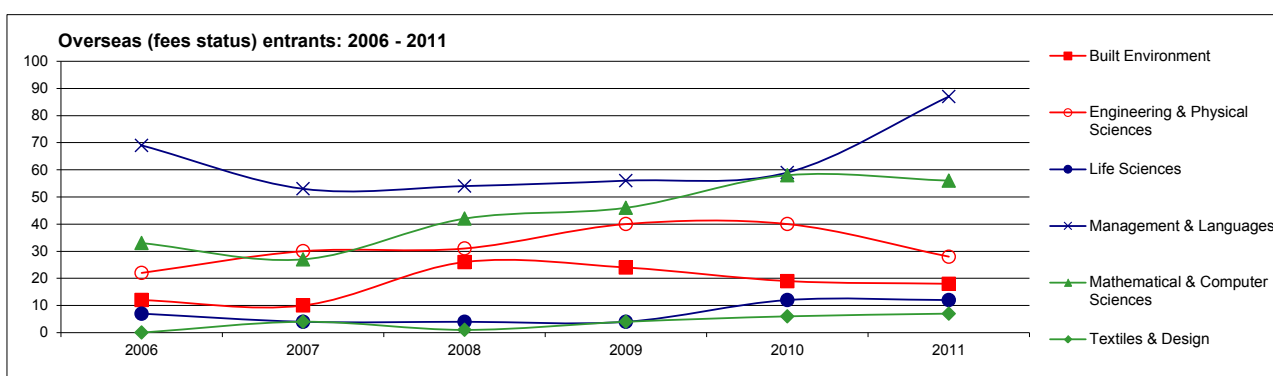
UK/EU (fees status)

SCHOOL/Programme	2011 ENTRANTS	% change 11/10	2010 ENTRANTS	% change 10/09	2009 ENTRANTS	% change 09/08	2008 ENTRANTS	% change 08/07	2007 ENTRANTS
UNIVERSITY TOTAL	1634	27	1286	-36	2012	17	1716	3	1661
BUILT ENVIRONMENT	211	40	151	-41	256	25	205	-3	212
Architectural Engineering	28	33	21	-9	23	64	14	100	
Civil Engineering	95	79	53	-56	121	36	89	11	80
Construction Management & Surveying	58	26	46	-42	79	30	61	-23	79
Urban Planning	30	-3	31	-6	33	-20	41	-23	53
ENGINEERING & PHYSICAL SCIENCES	429	20	357	-37	564	13	498	4	479
Chemical Engineering	85	29	66	-14	77	22	63	29	49
Chemistry	78	28	61	-51	125	25	100	-6	106
Combined Studies (BSc)	12	500	2	-95	37	3	36	44	25
Electrical, Electronic & Computer Engineering	62	17	53	-18	65	16	56	-23	73
Mechanical Engineering	112	20	93	-40	156	6	147	17	126
Physics	64	-6	68	-17	82	8	76	-14	88
BEng Engineering	16	14	14	-36	22	10	20	67	12
LIFE SCIENCES	230	48	155	-44	277	41	197	4	189
Biology	138	109	66	-51	135	35	100	-4	104
Sport & Exercise Science			29	-56	66	8	61	39	44
Psychology	92	53	60	-21	76	111	36	-12	41
MANAGEMENT & LANGUAGES	422	45	292	-35	449	9	411	-4	426
Accountancy & Finance	93	39	67	-51	136	27	107	9	98
Economics	59	79	33	-38	53	6	50	2	49
Languages	122	34	91	-17	109	25	87	-19	107
Management	112	84	61	-41	103	-3	106	-13	122
Management (Scottish Borders Campus)	36	-10	40	-17	48	-21	61	22	50
MATHEMATICAL & COMPUTER SCIENCES	152	-23	198	-25	265	18	225	21	186
Actuarial Mathematics & Statistics	46	-26	62	-13	71		71	73	41
Computer Science	53	-29	75	-26	102	29	79	-2	81
Mathematics	53	-13	61	-34	92	23	75	17	64
TEXTILES & DESIGN	190	43	133	-34	201	12	180	7	169

Sport & Exercise Science was closed to new entrants after 2010/11

Overseas (fees status)

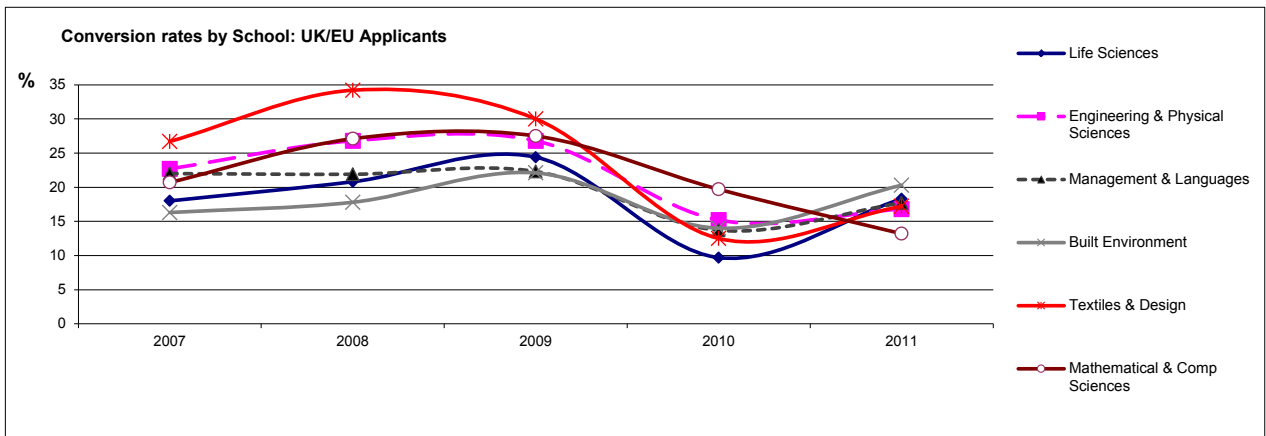
SCHOOL/Programme	2011 ENTRANTS	% change 11/10	2010 ENTRANTS	% change 10/09	2009 ENTRANTS	% change 09/08	2008 ENTRANTS	% change 08/07	2007 ENTRANTS
UNIVERSITY TOTAL	208	7	194	11	174	10	158	24	127
BUILT ENVIRONMENT	18	-5	19	-21	24	-8	26	160	10
Architectural Engineering	4	100	6	100	4	100	2	100	
Civil Engineering	8	14	7	-22	9	200	3	200	1
Construction Management & Surveying	2		3		7		7	17	6
Urban Planning	4	33	3	-25	4	-71	14	367	3
ENGINEERING & PHYSICAL SCIENCES	28		40		40	29	31	3	30
Chemical Engineering	14	27	11	-15	13	160	5	-50	10
Chemistry	2	100	2	100		-100	4	300	1
Combined Studies (BSc)					1				
Electrical, Electronic & Computer Engineering	3	-80	15	25	12	33	9	29	7
Mechanical Engineering	6		11		11	-8	12	9	11
Physics	3	200	1	-50	2	100	1		1
BEng Engineering					1				
LIFE SCIENCES	12	0	12	200	4		4		4
Biology	6	-40	10	150	4	33	3	-25	4
Psychology	6		2				1		
MANAGEMENT & LANGUAGES	87	47	59	5	56	4	54	2	53
Accountancy & Finance	23	-8	25	14	22	-4	23	-12	26
Economics	16	100	8	-43	14	100	7	-13	8
Languages	1		2		2	-50	4		
Management	45	105	22	57	14	-22	18	38	13
Management (Scottish Borders Campus)	2	0	2	-50	4	100	2	-67	6
MATHEMATICAL & COMPUTER SCIENCES	56	-3	58	26	46	10	42	56	27
Actuarial Mathematics & Statistics	41	14	36	24	29		29	45	20
Computer Science	8	-27	11	57	7	-22	9	800	1
Mathematics	7	-36	11	10	10	150	4	-33	6
TEXTILES & DESIGN	7	17	6	50	4	300	1		3



CONVERSION RATES OF UNDERGRADUATE APPLICATIONS TO ENTRANTS 2007 - 2011 ENTRY

UK/EU Applicants

SCHOOL/Programme	Applications					Entrants					Conversion Apps to Entrants %				
	2011	2010	2009	2008	2007	2011	2010	2009	2008	2007	2011	2010	2009	2008	2007
UNIVERSITY TOTAL	9495	9226	8043	7185	7898	1634	1286	209	1716	1654	17.2	13.9	25.0	23.9	20.9
BUILT ENVIRONMENT	1040	1081	1156	1152	1303	211	151	256	205	212	20.3	14.0	22.1	17.8	16.3
Architectural Engineering	151	147	121	99		28	21	23	14		18.5	14.3	19.0	14.1	
Civil Engineering	550	524	535	480	510	95	53	121	89	80	17.3	10.1	22.6	18.5	15.7
Construction Mgt & Surveying	241	294	325	329	528	58	46	79	61	79	24.1	15.6	24.3	18.5	15.0
Urban Studies	98	116	175	244	265	30	31	33	41	53	30.6	26.7	18.9	16.8	20.0
ENGINEERING & PHYSICAL SCIENCES	2556	2347	2104	1856	2108	429	357	564	498	479	16.8	15.2	26.8	26.8	22.7
Chemical Engineering	432	355	363	288	294	85	66	77	63	49	19.7	18.6	21.2	21.9	16.7
Chemistry	469	418	453	380	507	78	61	125	100	106	16.6	14.6	27.6	26.3	20.9
Combined Studies (BSc)	64	41	74	66	81	12	2	37	36	25	18.8	4.9	50.0	54.5	30.9
Electrical, Electronic & Computer Engineering	300	320	209	215	245	62	53	65	56	73	20.7	16.6	31.1	26.0	29.8
Mechanical Engineering	787	712	603	558	631	112	93	156	147	126	14.2	13.1	25.9	26.3	20.0
Physics	401	415	324	262	283	64	68	82	76	88	16.0	16.4	25.3	29.0	31.1
BEng Engineering	103	86	78	87	67	16	14	22	20	12	15.5	16.3	28.2	23.0	17.9
LIFE SCIENCES	1258	1600	1135	947	1049	230	155	277	197	189	18.3	9.7	24.4	20.8	18.0
Biological Sciences	555	551	490	386	468	138	66	135	100	104	24.9	12.0	27.6	25.9	22.2
Psychology	703	403	309	364	235	92	29	76	61	41	13.1	7.2	24.6	16.8	17.4
Sport & Exercise Science		646	336	197	346		60	66	36	44		9.3	19.6	18.3	12.7
MANAGEMENT & LANGUAGES	2384	2132	2012	1874	1934	422	292	449	411	426	17.7	13.7	22.3	21.9	22.0
Accountancy & Finance	532	537	592	528	494	93	67	136	107	98	17.5	12.5	23.0	20.3	19.8
Economics	283	212	202	224	245	59	33	53	50	49	20.8	15.6	26.2	22.3	20.0
Languages	456	391	383	351	416	122	91	109	87	107	26.8	23.3	28.5	24.8	25.7
Management	931	619	561	536	578	112	61	103	106	122	12.0	9.9	18.4	19.8	21.1
Management (Scottish Borders Campus)	182	373	274	235	201	36	40	48	61	50	19.8	10.7	17.5	26.0	24.9
MATHEMATICAL & COMPUTER SCIENCES	1151	1006	965	829	897	152	198	265	225	186	13.2	19.7	27.5	27.1	20.7
Actuarial Mathematics & Statistics	267	244	255	237	210	46	62	71	71	41	17.2	25.4	27.8	30.0	19.5
Computer Science	412	414	353	279	347	53	75	102	79	81	12.9	18.1	28.9	28.3	23.3
Mathematics	472	348	357	313	340	53	61	92	75	64	11.2	17.5	25.8	24.0	18.8
TEXTILES & DESIGN	1106	1060	671	527	607	190	133	201	180	162	17.2	12.5	30.0	34.2	26.7



Overseas Applicants

SCHOOL/Programme	Applications					Entrants					Conversion Apps to Entrants %				
	2011	2010	2009	2008	2007	2011	2010	2009	2008	2007	2011	2010	2009	2008	2007
UNIVERSITY TOTAL	946	871	712	733	1000	208	194	174	158	128	22.0	22.3	24.4	21.6	12.8
BUILT ENVIRONMENT	103	103	102	95	134	18	19	24	26	10	17.5	18.4	23.5	27.4	7.5
Architectural Engineering	17	18	17	12		4	6	4	2		23.5	33.3	23.5	16.7	
Civil Engineering	52	33	35	30	49	8	7	9	3	1	15.4	21.2	25.7	10.0	2.0
Construction Mgt & Surveying	26	28	32	35	66	2	3	7	7	6	7.7	10.7	21.9	20.0	9.1
Urban Studies	8	24	18	18	19	4	3	4	14	3	50.0	12.5	22.2	77.8	15.8
ENGINEERING & PHYSICAL SCIENCES	205	176	190	168	279	28	40	40	31	30	13.7	22.7	21.1	18.5	10.8
Chemical Engineering	70	59	66	42	67	14	11	13	5	10	20.0	18.6	19.7	11.9	14.9
Chemistry	17	11	5	8	26	2	2		4	1	11.8	18.2	0.0	50.0	3.8
Combined Studies (BSc)	2	6		1	5			1			0.0	0.0		0.0	0.0
Electrical, Electronic & Computer Engineering	35	38	44	60	77	3	15	12	9	7	8.6	39.5	27.3	15.0	9.1
Mechanical Engineering	66	48	61	45	83	6	11	11	12	11	9.1	22.9	18.0	26.7	13.3
Physics	11	6	10	10	18	3	1	2	1	1	27.3	16.7	20.0	10.0	5.6
BEng Engineering	4	8	4	2	3			1			0.0	0.0	25.0	0.0	0.0
LIFE SCIENCES	63	47	15	17	48	12	12	4	4	4	19.0	25.5	26.7	23.5	8.3
Biological Sciences	40	27	12	16	36	6	10	4	3	4	15.0	37.0	33.3	18.8	11.1
Psychology	23	16	1		5	6	2		1		26.1	12.5	0.0	0.0	0.0
Sport & Exercise Science		4	2	1	7							0.0	0.0	0.0	0.0
MANAGEMENT & LANGUAGES	295	251	175	263	295	87	59	56	54	53	29.5	23.5	32.0	20.5	18.0
Accountancy & Finance	81	68	49	102	77	23	25	22	23	26	28.4	36.8	44.9	22.5	33.8
Economics	43	31	28	30	53	16	8	14	7	8	37.2	25.8	50.0	23.3	15.1
Languages	6	8	8	10	6	1	2	2	4		16.7	25.0	25.0	40.0	0.0
Management	127	70	48	72	74	45	22	14	18	13	35.4	31.4	29.2	25.0	17.6
Management (Scottish Borders Campus)	38	74	42	49	85	2	2	4	2	6	5.3	2.7	9.5	4.1	7.1
MATHEMATICAL & COMPUTER SCIENCES	241	266	221	178	229	56	58	46	42	27	23.2	21.8	20.8	23.6	11.8
Actuarial Mathematics & Statistics	180	175	153	121	130	41	36	29	29	20	22.8	20.6	19.0	24.0	15.4
Computer Science	29	40	31	42	50	8	11	7	9	1	27.6	27.5	22.6	21.4	2.0
Mathematics	32	51	37	15	49	7	11	10	4	6	21.9	21.6	27.0	26.7	12.2
TEXTILES & DESIGN	39	28	9	12	15	7	6	4	1	4	17.9	21.4	44.4	8.3	26.7

PREVIOUS INSTITUTIONS OF FRESHERS: 2011 ENTRY (HOME FEE STATUS)

SCHOOL NAME	Town/City	Area	2011 No	2010 No	2009 No	2008 No
EDINBURGH TELFORD COLLEGE	Edinburgh	Edinburgh	38	36	57	39
FORTH VALLEY COLLEGE OF FE	Falkirk	Stirlingshire	27	17	25	14
STEVENSON COLLEGE	Edinburgh	Edinburgh	24	33	63	43
CARDONALD COLLEGE	Glasgow	Glasgow	17	14	23	25
JEWEL & ESK VALLEY COLLEGE	Dalkeith	Midlothian	16	27	20	18
GLASGOW METROPOLITAN COLLEGE	Glasgow	Glasgow	16	21		
CRAIGMOUNT HIGH SCHOOL	Edinburgh	Edinburgh	14	10	21	11
BANCHORY ACADEMY	Banchory	Aberdeenshire	13	11	14	
BALWEARIE HIGH SCHOOL	Kirkcaldy	Fife	12	9	19	14
BORDERS COLLEGE	Galashiels	Roxburghshire	12			
GEORGE WATSON'S COLLEGE	Edinburgh	Edinburgh	12	8	10	11
ROYAL HIGH SCHOOL	Edinburgh	Edinburgh	12	8		
BOROUGHMUIR HIGH SCHOOL	Edinburgh	Edinburgh	11	15	11	11
CURRIE HIGH SCHOOL	Currie	Edinburgh	11	13	21	12
INVERKEITHING HIGH SCHOOL	Inverkeithing	Fife	11			
ADAM SMITH COLLEGE	Kirkcaldy	Fife	10	15	24	10
LARBET HIGH SCHOOL	Larbert	Central	10			
ST THOMAS OF AQUINS	Edinburgh	Midlothian	10			
WEST CALDER HIGH SCHOOL	West Calder	West Lothian	10	8	14	12
BALERNO COMMUNITY HIGH SCHOOL	Balerno	Edinburgh	10		15	11
CARNEGIE COLLEGE	Dunfermline	Fife	10		11	
FIRRHILL HIGH SCHOOL	Edinburgh	Edinburgh	10		11	11
KIRKCALDY HIGH SCHOOL	Kirkcaldy	Fife	10		11	

The above table shows the top 23 previous institutions by size of HWU entry population in 2011. Within the remaining institutions, 64 had populations of 4 to 9.

QUALIFICATIONS HELD BY FULL-TIME UNDERGRADUATE NEW ENTRANTS: 2007 - 2011 ENTRY Highers and A/AS Level Holders

SCHOOL/Programme	* TOTAL UCAS POINTS									
	2011 Entry		2010 Entry	2009 Entry		2008 Entry		2007 Entry		
	Nos	Tariff	Tariff	Nos	Tariff	Nos	Tariff	Nos	Tariff	
UNIVERSITY TOTAL	923	354	343	1361	344	885	334	816	331	
BUILT ENVIRONMENT	84	351	357	177	307	97	352	103	324	
Architectural Engineering	31	338		69	267	30	364	33	317	
Civil Engineering	66	365		86	339	46	355	42	326	
Urban Studies	18	325		22	311	21	329	28	330	
ENGINEERING & PHYSICAL SCIENCES	272	363	351	338	375	248	335	206	336	
Chemical Engineering	59	359		71	400	46	343	38	374	
Chemistry	50	358		61	391	57	313	47	325	
Electrical, Electronic & Computer Engineering	28	332		36	339	25	312	24	318	
Mechanical Engineering	82	383		96	368	54	360	54	338	
Physics	36	355		46	374	35	360	29	342	
BEng Engineering/Combined Studies (BSc)	17	381		28	345	31	312	14	284	
LIFE SCIENCES	137	339	332	138	336	115	299	102	309	
Biology	81	344		18	352	42	289	41	303	
Sport & Exercise Science				59	334	49	293	37	318	
Psychology	56	332		61	333	24	328	24	305	
MANAGEMENT & LANGUAGES	244	347	323	306	338	197	339	224	340	
Accountancy & Finance	55	343		119	300	51	335	57	340	
Economics	32	330		36	345	21	314	26	294	
Languages (incl Bus & Lang)	86	366		74	386	60	360	71	380	
Management	64	339		69	352	64	331	68	321	
Management (Scottish Borders Campus)	7	282		8	300	1	264	2	210	
MATHEMATICAL & COMPUTER SCIENCES	117	366	352	215	381	155	352	108	349	
Actuarial Mathematics & Statistics	39	399		67	474	63	426	31	411	
Computer Science	38	350		67	332	35	279	31	312	
Mathematics	40	350		81	345	57	316	46	333	
TEXTILES & DESIGN	69	356	345	187	297	73	315	73	300	

No of entrants contributing to the tariff scores in italics

Note that entrants to some of the courses based in the School of Textiles and Design are admitted on the basis of their portfolio as well as academic qualifications.

Sport & Exercise Science was closed to new entrants after 2010/11

* UCAS points allocated to Highers, Advanced Highers, A Levels, Advanced Subsidiaries, Vocational A Levels and Vocational Double Awards

For consistency in reporting the previously reported tariff scores for 2010 entry have been replaced, at School level, by data calculated on the same basis as 2011 entry figures

FIRST DEGREES & OTHER AWARDS: 2009 - 2011 - Scottish Campus

SCHOOL/Programme	2011										2010										2009																	
	EFD	1st	2.1	% EFD, 1,2,1	2.2	3rd	Ord Yr-4	Ord Yr-3	Other Cert HE	Dip HE	Total	EFD	1st	2.1	% EFD, 1,2,1	2.2	Un-clas'd 2nd	3rd	with honours	Ord Yr-4	Ord Yr-3	Other Cert HE	Dip HE	Total	EFD	1st	2.1	% EFD, 1,2,1	2.2	3rd	with honours	Ord Yr-4	Ord Yr-3	Other Cert HE	Dip HE	Total		
UNIVERSITY TOTAL	174	164	426	71	65	222	51	41	164	107	43	1392	132	188	414	69	65	235	1	43	1	46	328	54	27	1469	126	154	400	68	64	221	42	50	396	129	54	1572
BUILT ENVIRONMENT	57	16	58	71	58	37	8	10	8	2	204	38	18	43	69	58	28	7	7	9	12	5	4	164	37	15	45	68	55	40	5	42	10	3	202			
Architectural Engineering	5	2	64	33	2	1	1	1	1	1	13	6	1	70	25	1	1	1	2	2	6	2	2	10	6	1	1	80	50	2	2	2	2	2	12			
Civil Engineering	52	1	81	36	8	3	2	1	1	77	32	2	8	74	40	12	5	5	5	2	4	2	2	67	31	2	7	67	31	13	4	3	7	3	1	71		
Construction Management & Surveying	9	28	61	61	19	3	2	5	4	70	22	10	19	67	67	8	2	2	2	2	2	2	1	50	8	21	67	67	13	1	20	4	2	69				
Urban Studies	6	21	71	71	8	1	2	2	3	44	6	6	15	64	64	8	2	2	2	2	2	2	1	37	4	16	59	59	12	1	13	3	3	60				
ENGINEERING & PHYSICAL SCIENCES	107	15	44	74	57	34	8	15	66	30	18	337	86	22	59	66	49	53	17	16	145	25	14	437	84	11	31	63	37	40	16	17	114	46	19	378		
Chemical Engineering	22	2	4	90	67	2	1	4	4	35	17	2	3	69	33	6	1	1	3	4	2	2	2	38	10	2	57	18	7	2	2	2	2	27				
Chemistry	24	1	6	70	35	7	3	14	7	4	69	25	3	5	83	53	4	2	2	1	47	2	2	91	17	1	50	10	14	4	1	27	6	4	75			
Electrical, Electronic & Comp Eng	9	2	9	61	46	9	2	13	3	52	5	3	11	53	45	10	4	4	3	10	5	2	48	11	4	9	67	52	2	3	7	9	4	1	50			
Mechanical Engineering	30	7	16	80	64	7	1	5	12	7	2	87	22	9	31	70	60	18	5	4	36	5	4	134	22	3	14	80	63	8	1	42	6	2	99			
Physics	22	2	8	76	50	8	2	10	10	52	17	5	8	73	54	8	1	1	2	16	1	1	59	24	1	5	73	35	5	2	4	7	3	51				
Combined Studies (BSc/BEEng)	1	1	29	29	1	4	17	9	9	42	1	1	7	7	7	4	4	4	3	32	15	5	67	24	1	2	14	14	4	4	4	27	25	10	76			
LIFE SCIENCES	20	57	66	66	25	11	4	15	14	5	151	20	65	67	67	36	1	1	4	45	11	2	184	20	62	67	67	25	6	5	19	17	6	150				
Biology	9	27	58	58	15	8	3	8	8	4	82	10	29	59	59	23	1	1	3	39	7	2	114	12	23	58	58	17	4	4	17	8	3	88				
Psychology	7	16	85	85	3	1	3	1	1	31	5	23	85	85	5	5	5	5	3	2	2	2	38	4	17	72	72	6	1	1	4	1	4	1	35			
Sport & Exercise Science	4	14	64	64	7	2	1	4	5	1	38	5	13	67	67	8	2	2	1	3	2	2	32	4	12	84	84	2	1	1	4	2	2	26				
MANAGEMENT & LANGUAGES	44	165	77	77	70	8	9	44	30	10	380	53	146	73	73	61	1	4	9	83	11	5	373	52	169	75	75	58	3	11	178	28	11	510				
Accountancy & Finance	15	47	76	76	16	3	1	9	11	102	18	51	73	73	20	1	1	1	4	14	2	2	110	6	49	71	71	16	1	5	40	6	3	126				
Economics	7	11	64	64	9	1	3	6	1	38	8	21	88	88	4	4	4	4	10	1	1	1	45	4	11	79	79	4	1	9	5	5	33					
Languages	12	34	69	69	16	3	2	4	8	4	83	12	24	75	75	9	2	2	2	2	4	4	54	21	38	84	84	8	1	2	3	4	1	78				
Management (Scottish Borders Campus)	10	73	75	75	24	2	2	10	5	4	130	15	49	70	70	25	1	1	2	13	2	1	108	21	66	73	73	27	1	4	36	9	5	169				
Management (Scottish Borders Campus) Combined Studies (BA)	13	1	1	1	5	3	13	13	13	13	13	1	1	1	1	1	1	1	23	2	1	26	4	5	63	63	3	3	3	22	11	1	2	22				
MATHEMATICAL & COMP SCIENCES	10	48	59	76	74	26	9	2	13	15	4	186	8	52	55	68	36	36	12	1	6	28	2	1	201	5	33	44	62	61	35	5	10	24	21	8	185	
Actuarial Mathematics & Statistics	26	17	83	83	7	2	2	6	1	61	34	28	84	84	8	8	3	3	3	1	5	1	79	14	20	74	74	12	12	12	1	6	1	6	1	54		
Computer Science	7	9	14	73	68	10	1	5	5	48	8	6	17	63	56	11	4	4	3	17	1	1	67	5	12	15	62	57	13	3	4	18	11	4	81			
Mathematics	3	13	28	72	71	9	7	1	6	9	3	79	12	10	47	47	17	5	5	2	6	1	1	55	7	9	47	47	10	2	6	5	4	7	50			
TEXTILES & DESIGN	21	43	62	62	30	7	3	16	10	4	134	23	46	73	73	21	2	2	2	2	15	19	7	110	23	59	72	72	23	7	2	19	7	7	147			

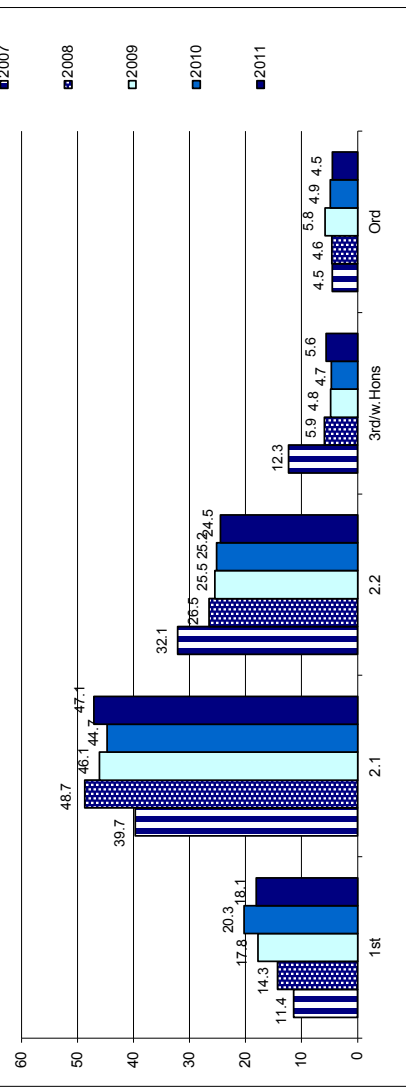
Notes: EFD = Enhanced First Degree. % EFD, 1st, 2.1 provides the percentage of combined EFD/1/2.1 degree awards against the total combined EFD and Honours (4 year) awards.

% 1, 2.1 provides the percentage of combined 1st and 2.1 degree awards against the total Honours (4 year) awards.

FIRST DEGREES AND OTHER AWARDS (INTERNATIONAL PROGRAMMES) 2007 - 2011

SCHOOL/Programme	2011		2010		2009		2008		2007	
	Ord Yr 3	Dip Cert HE	All awards	Total	All awards	Total	All awards	Total	All awards	Total
UNIVERSITY TOTAL	803	3	1	807	782	551	595	455	455	455
BUILT ENVIRONMENT	455			479	422	422	384	254	254	254
Architectural Engineering	1			42	276	276	268	254	254	254
Construction Management & Surveying	444			418	146	146	116	116	116	116
Urban Studies	10			19	19	19	116	116	116	116
MANAGEMENT & LANGUAGES	328	3	1	332	268	118	202	198	198	198
Management Programme	328	3	1	332	268	118	202	198	198	198
MATHEMATICAL & COMP SCIENCES	20	20	3	20	35	11	9	3	3	3
Computer Science	20	20	3	20	35	11	9	3	3	3

Classified Honours Degree Classifications 2007 - 2011 (% of total)
(excludes enhanced first degrees)



UNDERGRADUATE STUDENT PROGRESSION: 2008/09 - 2011/12

ALL YEARS: On-Campus - Scotland

SCHOOL: Programme	2010/11 to 2011/12			2009/10 to 2010/11			2008/09 to 2009/10			Total		
	Awarded degree/ eligible for other qualification	Continuing as registered students in 2010/11	Withdrawn from the University	Total	Awarded degree/ eligible for other qualification	Continuing as registered students in 2010/11	Withdrawn from the University	Total	Awarded degree/ eligible for other qualification		Continuing as registered students in 2009/10	Withdrawn from the University
UNIVERSITY TOTAL	1488	3897	188	5573	1650	4001	332	5983	1574	3948	299	5821
BUILT ENVIRONMENT	216	524	25	765	174	588	46	808	205	546	46	797
Architectural Engineering	14	67	2	83	10	56	4	70	12	42	5	59
Civil Engineering	88	242	11	341	67	278	16	361	71	230	13	314
Construction Management & Surveying	72	136	6	214	55	162	18	235	69	174	13	256
Urban Studies	42	79	6	127	42	92	8	142	53	100	15	168
ENGINEERING & PHYSICAL SCIENCES	368	933	67	1368	479	936	108	1523	359	1017	99	1475
Chemical Engineering	38	191	14	243	42	171	19	232	27	152	9	188
Chemistry	77	155	10	242	100	179	14	293	69	192	13	274
Combined Studies (BSc/BEng)	48	75	8	131	80	91	12	183	60	85	11	156
Electrical, Electronic & Computer Engineering	56	104	19	179	53	107	17	177	50	136	16	202
Mechanical Engineering	93	299	13	405	143	286	27	456	100	352	46	498
Physics	56	109	3	168	61	102	19	182	53	100	4	157
LIFE SCIENCES	150	467	19	636	208	459	33	700	148	419	26	593
Biology	78	267	5	290	126	203	11	340	90	203	11	304
Psychology	34	148	6	188	45	123	11	179	33	100	3	136
Sport & Exercise Science	38	112	8	158	37	133	11	181	25	116	12	153
MANAGEMENT & LANGUAGES	414	971	36	1421	421	1030	83	1534	522	1077	74	1673
Accountancy & Finance	108	276	7	391	124	308	22	454	117	318	22	457
Combined Studies (BA)	18	15	1	34	30	10	3	43	25	14	1	40
Economics	40	124	4	168	50	130	4	184	33	132	3	168
Languages	96	222	6	324	68	234	23	325	98	202	16	316
Management	138	276	8	422	120	299	21	440	171	367	21	559
Management (SBC)	14	58	10	82	29	49	10	88	44	44	11	99
Management Link Programme									34	100.0%		34
MATHEMATICAL & COMPUTER SCIENCES	196	634	28	858	226	607	32	865	183	554	29	766
Actuarial Mathematics & Statistics	60	234	3	297	85	220	3	308	50	223	6	279
Computer Science	55	195	15	265	75	173	15	263	86	155	15	256
Mathematics	81	205	10	296	66	214	14	294	47	176	8	231
TEXTILES & DESIGN	144	368	13	525	142	381	30	553	157	335	25	517
Combined Studies	5	7	1	13	5	3	1	9				
Textiles & Design	139	361	12	512	137	378	29	544	157	335	25	517

Includes full- and part-time students. Includes home students on a year abroad as part of their studies. Excludes registered incoming exchange and non-graduating students.

Withdrawal figures include those who have left the University for either academic or personal reasons.

"Other qualifications" include the Diploma and the Certificate of Higher Education.

UNDERGRADUATE STUDENT PROGRESSION (Split UK and EU/ other overseas): 2010/11 to 2011/12

ALL YEARS: On-Campus - Scotland

SCHOOL: Programme	Awarded degree/ awarded or deemed eligible for other qualification			Continuing as registered students in 2011-12			Withdrawn from the University			Total		
	UK	EU & Overseas	Total	UK	EU & Overseas	Total	UK	EU & Overseas	Total	UK	EU & Overseas	Total
UNIVERSITY TOTAL	1151	337	1488	3222	675	3897	147	41	188	4520	1052	5573
BUILT ENVIRONMENT	177	39	216	434	90	524	19	6	25	630	135	765
Architectural Engineering	12	2	14	51	16	67	8	2	10	63	20	83
Civil Engineering	69	19	88	190	52	242	8	3	11	267	74	341
Construction Management & Surveying	66	6	72	125	11	136	6	1	7	197	17	214
Urban Studies	30	12	42	68	11	79	5	1	6	103	24	127
ENGINEERING & PHYSICAL SCIENCES	260	108	368	787	146	933	52	15	67	1099	269	1368
Chemical Engineering	31	7	38	164	27	191	11	3	14	206	37	243
Chemistry	61	16	77	137	18	155	9	1	10	207	35	242
Combined Studies (BSc/BEng)	42	6	48	68	7	75	7	1	8	117	14	131
Electrical, Electronic & Computer Engineering	35	21	56	76	28	104	14	5	19	125	54	179
Mechanical Engineering	65	28	93	247	52	299	8	5	13	320	85	405
Physics	26	30	56	95	14	109	3	5	8	124	44	168
LIFE SCIENCES	126	24	150	424	43	467	16	3	19	566	70	636
Biology	59	19	78	177	30	207	2	3	5	238	52	290
Psychology	31	3	34	136	12	148	6	1	7	173	15	188
Sport & Exercise Science	36	2	38	111	1	112	8	1	9	155	3	158
MANAGEMENT & LANGUAGES	312	102	414	722	249	971	28	8	36	1062	359	1421
Accountancy & Finance	83	25	108	204	72	276	6	1	7	293	98	391
Combined Studies (BA)	9	9	18	10	5	15	1	1	2	20	14	34
Economics	32	8	40	83	41	124	3	1	4	118	50	168
Languages	81	15	96	181	41	222	6	1	7	268	56	324
Management	100	38	138	203	73	276	6	2	8	309	113	422
Management (SBC)	7	7	14	41	17	58	6	4	10	54	28	82
MATHEMATICAL & COMPUTER SCIENCES	139	57	196	507	127	634	21	7	28	667	191	858
Actuarial Mathematics & Statistics	26	34	60	167	67	234	3	6	9	196	101	297
Computer Science	42	13	55	162	33	195	9	1	10	213	52	265
Mathematics	71	10	81	178	27	205	9	1	10	258	38	296
TEXTILES & DESIGN	137	7	144	348	20	368	11	2	13	496	28	525
Combined Studies	5	5	10	6	1	7	1	1	2	12	1	13
Textiles & Design	132	7	139	342	19	361	10	2	12	484	28	512

UNDERGRADUATE STUDENT PROGRESSION: 2008/09 - 20011/12

FRESHERS ONLY: On-Campus - Scotland

SCHOOL: Programme	2010/11 to 2011/12				2009/10 to 2010/11				2008/09 to 2009/10				Total								
	Awarded degree/awarded or eligible for other qualification	Continuing as registered students in 2010/11	Withdrawn from the University	Total	Awarded degree/awarded or eligible for other qualification	Continuing as registered students in 2010/11	Withdrawn from the University	Total	Awarded degree/awarded or eligible for other qualification	Continuing as registered students in 2009/10	Withdrawn from the University	Total									
UNIVERSITY TOTAL	116	7.8%	1217	82.0%	152	10.2%	1485	293	13.2%	1627	73.6%	292	13.2%	2212	260	13.0%	1519	75.8%	226	11.3%	2005
BUILT ENVIRONMENT	10	5.7%	147	84.5%	17	9.8%	174	14	5.0%	221	78.9%	45	16.1%	280	26	15.1%	122	70.9%	24	14.0%	172
Architectural Engineering	1	1.6%	26	89.7%	2	6.9%	29	10	7.7%	23	85.2%	4	14.8%	27	8	8.3%	12	75.0%	4	25.0%	16
Civil Engineering	3	6.0%	44	88.0%	3	6.0%	50	3	3.5%	65	75.6%	18	20.9%	130	15	13.0%	87	79.2%	12	12.5%	96
Construction Management & Surveying	5	14.7%	24	70.6%	5	14.7%	34	1	2.7%	29	78.4%	7	18.9%	37	11	19.3%	35	61.4%	11	19.3%	57
ENGINEERING & PHYSICAL SCIENCES	55	13.5%	298	73.2%	54	13.3%	407	128	22.0%	361	62.1%	92	15.8%	581	106	18.0%	402	68.1%	82	13.9%	590
Chemical Engineering	1	1.3%	65	85.5%	10	13.2%	76	42	33.9%	71	79.8%	18	20.2%	89	1	1.5%	61	89.7%	6	8.8%	68
Chemistry	8	11.6%	54	78.3%	7	10.1%	69	10	23.8%	69	55.6%	13	10.5%	124	20	19.2%	71	68.3%	13	12.5%	104
Combined Studies (BSc/BEng)	15	71.4%	15	71.4%	6	28.6%	21	11	14.7%	47	62.7%	17	22.7%	75	9	10.2%	63	71.6%	7	14.6%	48
Electrical, Electronic & Computer Engineering	12	7.8%	85	83.3%	9	8.8%	102	37	23.0%	109	64.9%	22	13.1%	168	33	16.0%	136	66.0%	37	18.2%	88
Mechanical Engineering	26	38.2%	39	57.4%	3	4.4%	68	28	33.7%	41	49.4%	14	16.9%	83	30	39.5%	43	56.6%	3	3.9%	206
Physics	9	5.4%	140	84.3%	17	10.2%	166	47	16.7%	205	72.7%	30	10.8%	282	23	11.4%	163	81.1%	15	7.5%	201
LIFE SCIENCES	8	10.3%	65	83.3%	5	6.4%	78	42	30.4%	86	62.3%	10	7.2%	138	21	20.2%	76	73.1%	7	6.7%	104
Biology	1	3.7%	56	91.8%	5	8.2%	61	1	6.1%	68	87.2%	9	11.5%	78	2	3.3%	52	85.2%	7	11.5%	61
Psychology	17	5.0%	295	86.5%	29	8.5%	341	77	14.0%	402	73.1%	71	12.9%	550	69	11.8%	457	78.3%	58	9.9%	584
Sport & Exercise Science	3	3.7%	74	90.2%	5	6.1%	82	12	7.5%	127	79.9%	20	12.8%	159	12	7.8%	124	80.5%	18	11.7%	154
MANAGEMENT & LANGUAGES	1	100%	1	100%	1	100%	1	18	94.7%	1	5.3%	1	6.1%	19	4	80.0%	4	90.7%	1	20.0%	5
Accountancy & Finance	2	4.8%	36	85.7%	4	9.5%	42	5	7.6%	57	86.4%	4	6.1%	66	4	7.4%	49	90.7%	1	1.9%	54
Combined Studies (BA)	1	1.2%	80	93.0%	5	5.8%	86	5	4.2%	93	77.5%	22	18.3%	120	1	1.1%	74	85.1%	12	13.8%	87
Economics	5	5.8%	74	86.0%	7	8.1%	86	13	10.9%	91	76.5%	15	12.6%	119	16	7.5%	180	84.5%	17	8.0%	213
Languages	5	11.4%	31	70.5%	8	18.2%	44	24	35.8%	33	49.3%	10	14.9%	67	32	45.1%	30	42.3%	9	12.7%	71
Management (Scottish Borders Campus)	11	4.2%	227	87.0%	23	8.8%	261	18	5.8%	267	85.6%	27	8.7%	312	23	8.5%	221	81.9%	26	9.6%	270
MATHEMATICAL & COMPUTER SCIENCES	1	5.6%	94	95.9%	3	3.1%	98	15	13.8%	97	97.0%	3	3.0%	100	1	1.0%	94	94.0%	5	5.0%	100
Actuarial Mathematics & Statistics	5	6.8%	73	82.0%	11	12.4%	89	3	2.9%	81	74.3%	13	11.9%	109	20	22.5%	55	61.8%	14	15.7%	89
Computer Science	5	6.8%	60	81.1%	9	12.2%	74	9	4.3%	89	86.4%	11	10.7%	103	2	2.5%	72	88.9%	7	8.6%	81
Mathematics	14	10.3%	110	80.9%	12	8.8%	136	9	4.3%	171	82.6%	27	13.0%	207	13	6.9%	154	81.9%	21	11.2%	188
TEXTILES & DESIGN	14	10.3%	110	80.9%	12	8.8%	136	9	4.3%	171	82.6%	27	13.0%	207	13	6.9%	154	81.9%	21	11.2%	188
Textiles & Design	14	10.3%	110	80.9%	12	8.8%	136	9	4.3%	171	82.6%	27	13.0%	207	13	6.9%	154	81.9%	21	11.2%	188

Includes full- and part-time students. Includes home students on a year abroad as part of their studies. Excludes registered incoming exchange and non-graduating students.

Withdrawal figures include those who have left the University for either academic or personal reasons.

"Other qualifications" include the Diploma and the Certificate of Higher Education.

School of the Built Environment programmes were reconfigured in 2009/10.

UNDERGRADUATE STUDENT PROGRESSION: 2009/101 to 2011/12

ALL YEARS: On-Campus - Dubai

SCHOOL: Programme	2010/11 to 2011/12			2009/10 to 2010/11			Total
	Awarded degree/awarded or eligible for other qualification	Continuing as registered students in 2010/11	Withdrawn from the University	Awarded degree/awarded or eligible for other qualification	Continuing as registered students in 2009/10	Withdrawn from the University	
UNIVERSITY TOTAL	183	788	54	104	474	32	1025
BUILT ENVIRONMENT	21	50	12	32	28	7	83
Civil Engineering	1	45	3	3	14	2	49
Construction Management & Surveying	20	5	9	29	14	5	34
ENGINEERING & PHYSICAL SCIENCES	45	213	16	29	159	9	274
Electrical, Electronic & Computer Engineering	16	69	2	7	54	1	87
Mechanical Engineering	29	144	14	22	105	8	187
MANAGEMENT & LANGUAGES	113	479	22	36	271	13	614
Accountancy & Finance	24	172	5	10	82	2	201
Management	89	307	17	26	189	11	413
TEXTILES & DESIGN	4	46	4	7	16	3	54
Textiles & Design	4	46	4	7	16	3	54

Includes full- and part-time students. Excludes registered incoming exchange and non-graduating students. Withdrawal figures include those who have left the University for either academic or personal reasons.

UNDERGRADUATE STUDENT PROGRESSION: 2009/10 to 2011/12

FRESHERS ONLY: On-Campus - Dubai

SCHOOL: Programme	2010/11 to 2011/12			2009/10 to 2010/11			Total
	Awarded degree/awarded or eligible for other qualification	Continuing as registered students in 2010/11	Withdrawn from the University	Awarded degree/awarded or eligible for other qualification	Continuing as registered students in 2009/10	Withdrawn from the University	
UNIVERSITY TOTAL	41	472	43	28	316	31	556
BUILT ENVIRONMENT	9	37	9	10	26	6	55
Civil Engineering	1	32	3	3	14	2	36
Construction Management & Surveying	8	5	6	7	12	4	19
ENGINEERING & PHYSICAL SCIENCES	2	109	10	5	86	9	121
Electrical, Electronic & Computer Engineering	1	31	2	3	28	1	34
Mechanical Engineering	1	78	8	2	58	8	87
MANAGEMENT & LANGUAGES	29	295	20	6	188	13	344
Accountancy & Finance	3	101	4	6	48	2	108
Management	26	194	16	6	140	11	236
TEXTILES & DESIGN	1	31	4	7	16	3	36
Textiles & Design	1	31	4	7	16	3	36

FIRST DEGREES & OTHER AWARDS: 2010 - 2011 - Dubai Campus

SCHOOL/Programme	2011 Honours				2010 Honours				Total	Ord Yr 3	Other Cert HE Dip HE	Total	Ord Yr 3	Total									
	1st	2.1	% 1,2,1	2.2	3rd	88	5	6							59	8	8	2	2	125	7	5	80
UNIVERSITY TOTAL	8	8	59	6	5	88	5	6	59	8	8	2	2	125	7	5	80	1	2	2	63	78	
BUILT ENVIRONMENT						9								9					1			23	24
Construction Management & Surveying Urban Studies						9								9					1			23	24
ENGINEERING & PHYSICAL SCIENCES	7	6	65	4	3	10	3	4	65	3	3	2	2	35	7	5	92	1	1		10	23	
Electrical, Electronic & Comp Eng	2	3		1	2	5	2	1		2	1	1	1	16							3	3	
Mechanical Engineering	5	3		3	1	5	1	3		1	1	1	1	19	7	5	92	1	1		7	20	
MANAGEMENT & LANGUAGES	1	2		2	2	69	5	2		5				81					1			30	31
Accountancy & Finance Management	1	2		2	2	18	5	2		5				18							10	10	
						51	5	2		5				63					1			20	21

HIGHER DEGREES AND OTHER AWARDS: 2011 - 2012 - Dubai Campus

SCHOOL/Programme	2011 Taught Master			2010 Taught Master			Total
	PgDip	PgCert	Total	PgDip	PgCert	Total	
UNIVERSITY TOTAL	42	25	267	153	9	177	
BUILT ENVIRONMENT	16	14	138	81	6	90	
Construction Management & Surveying Urban Studies	15	13	132	81	5	89	
	1	1	6		1	1	
ENGINEERING & PHYSICAL SCIENCES	8		8	2		2	
Mechanical Engineering	8			2		2	
MANAGEMENT & LANGUAGES	21	5	66	16	1	20	
Management	21	5	66	16	1	20	
MATHEMATICAL & COMPUTER SCIENCES	2	1	19	23	1	30	
Computer Science	2	1	19	23	1	30	
PETROLEUM ENGINEERING	3	5	36	31	1	35	

HIGHER DEGREES AND OTHER AWARDS - ON-CAMPUS (SCOTLAND) STUDENTS: 2009 - 2011

SCHOOL/Programme	2011					2010					2009										
	PhD	Taught Master	PgDip	PgCert	Grad Cert/Dip	Total	PhD	Taught Master	PgDip	PgCert	Grad Cert/Dip	Total	PhD	Taught Master	PgDip	PgCert	Grad Cert/Dip	Total			
UNIVERSITY TOTAL	114	1104	97	123	9	1447	75	4	871	83	66	7	1106	80	1	7	889	70	51	6	1074
BUILT ENVIRONMENT	8	233	27	11		279	7		209	26	8		250	16		1	234	12	15		278
Architectural Engineering		14				14			10	1			11			1	81	1	4		94
Civil Engineering	5	53	5	1		64	2		48	5	3		58	4			37	2	2		45
Construction Management & Surveying	2	84	11	6		103	5		74	10			89	4			102	2	4		112
Urban Studies	1	81	11	4		97			7	10	5		92	1			13	7	5		26
Built Environment (General)		1				1															1
ENGINEERING & PHYSICAL SCIENCES	43	166	9	3		221	36		162	8	7		213	27		2	110	5	4		149
Chemical Engineering	4	15	1			20	3		12		1		16	3			30	1	1		35
Chemistry	10	8	1			19	11		16				27	5			5				10
Electrical, Electronic & Computer Engineering	14	60	4	2		80	7		56	2	4		69	12		2	24	2	2		42
Mechanical Engineering	6	68	1	1		76	5		49	3	1		58	2		1	19	1	1		23
Physics	9	15	2			26	10		29	3	1		43	5		1	32	1			39
LIFE SCIENCES	8	100	7	2		117	7		37	1	1		47	6		1	41	3	1		51
Biology	7	100	7	2		116	6		37	1	1		45	6		1	41	3	1		51
Psychology	1					1	1						2								
Sport & Exercise Science							1		1				2								
MANAGEMENT & LANGUAGES	9	236	29	2	8	284	5		214	37	4	1	261	7			221	29	6	4	267
Accountancy and Finance	1	38	2			41			46	7	1		54	2			29	3	1		35
Economics	1					1	2						2	2							4
Languages	5	36	7		8	56	1		42	13		1	57	3			43	2		4	52
Management	2	162	20	2		186	2		126	17	3		148				144	22	5		171
Management (Scottish Borders Campus)																	1				3
MATHEMATICAL & COMPUTER SCIENCES	22	179	17	5	1	224	9		115	6	3	6	140	15			120	15	4	2	156
Actuarial Mathematics & Statistics	4	95	12	3		114	3		68	3	2		76	4			50	7			61
Computer Science	11	59	5	2	1	78	4		37	2	1	1	46	4			60	6	4	1	75
Mathematics	7	25				32	2		10	1		5	18	7			10	2			20
PETROLEUM ENGINEERING	17	169	7	91		284	10		119	5	26		161	6		4	119	6			135
TEXTILES & DESIGN	7	21	1	9		28	1		1	1	2		19	3			14				18
Academic Practice						9					15		15								20

Notes: Small numbers of campus based and consortium MBA graduates are included in the external programmes Edinburgh Business School total below.

Validation Partners: The University's School of Life Sciences validates an award from the Chartered Institute of Personnel and Development at Postgraduate Certificate level; the PG Cert in the Psychology of Organisational Development and Change. Approximately 50 certificates are awarded annually.

HIGHER DEGREES AND OTHER AWARDS - INTERNATIONAL PROGRAMMES: 2009 - 2011 (*Independent distance learners/ supported learners through ALP network)

SCHOOL/Programme	2011					2010					2009					
	PhD	Taught Master	PgDip	PgCert	Total	PhD	Taught Master	PgDip	PgCert	Total	PhD	Taught Master	PgDip	PgCert	Total	
UNIVERSITY TOTAL	6	1260	28	81	1375	6	1046	9	10	1072	8	1	873	9	61	952
BUILT ENVIRONMENT	1	46	24	46	117	1	82	7	6	96			40	1	2	43
Architectural Eng		6	4	5	15		12	1	1	14			28		1	29
Civil Engineering		12	1		13		6	1	1	9			4			4
Construction Management & Surveying	1	23	19	40	83		54	5	3	62			5	1	1	7
Urban Studies		4		1	5		10		1	11			2			2
Built Environment (General)		1			1								1			1
ENGINEERING & PHYSICAL SCIENCES	1				1	2	1	52		55	3	1	15			19
Chemical Engineering						1		5		6						
Chemistry							47		47	1			15			16
Electrical, Electronic & Computer Eng						1			1	2						2
Mechanical Engineering		1			1					1						
Physics						1				1						1
LIFE SCIENCES	1	4	3	34	42	1	1	1	1	3	2		3	3	52	60
Biology	1	4	3	1	9		1	1	1	2	1		3	3	1	8
Psychology				33	33					1			1		51	52
MANAGEMENT & LANGUAGES											1					1
Management											1					1
MATHEMATICAL & COMPUTER SCIENCES						1				1						4
Computer Science						1				1						4
PETROLEUM ENGINEERING		41	1	1	43	1	89	1	2	93			97	3	1	101
TEXTILES & DESIGN											1					1
EDINBURGH BUSINESS SCHOOL (MBA)	4	1168			1172		822		2	822			717		6	717
Academic Practice																6

Reporting method changed from calendar year to academic year in 2009

GRADUATE FIRST DESTINATIONS (FIRST DEGREES): 2007/08 - 2010/11

SCHOOL/DIVISION	2010/11 (January 2012 census)											2009/10 (January 2011 census)													
	No. of Known Dest (KD)	No. in Emp	% of KD	No. in Further Study	% of KD	Emp/Study (note 1)	Not Available/Not Seeking	% of KD	Seeking	% of KD	Total/In Emp	% in Graduate Level Job (note 2)	No. of Known Dest (KD)	No. in Emp	% of KD	No. in Further Study	% of KD	Emp/Study (note 1)	Not Available/Not Seeking	% of KD	Seeking	% of KD	Total/In Emp	% in Graduate Level Job (note 2)	
UNIVERSITY TOTAL	723	521	72.1	128	17.7	93.9	32	4.4	42	5.8	521	72.6	723	511	70.7	116	16.0	92.1	45	6.2	54	7.5	511	73.0	
BUILT ENVIRONMENT	123	100	81.3	13	10.6	94.2	3	2.4	7	5.7	100	84.0	99	67	67.7	9	9.1	83.5	8	8.1	15	15.2	67	67.2	
Architectural Engineering	8	5	62.5	2	25.0	100.0	1	12.5			5	100.0	35	24	68.6	3	8.6	81.8	2	5.7	6	17.1	24	70.8	
Construction Management & Surveying	42	34	81.0	4	9.5	92.7	1	2.4	3	7.1	34	79.4	42	30	71.4	4	9.5	87.2	3	7.1	5	11.9	30	70.0	
Civil Engineering	49	44	89.8	2	4.1	95.8	1	2.0	2	4.1	44	84.1	22	13	59.1	2	9.1	78.9	3	13.6	4	18.2	13	53.8	
Urban Studies	24	17	70.8	5	20.8	91.7		0.0	2	8.3	17	15	88.2	92	60	65.2	15	16.3	92.6	11	12.0	6	6.5	60	31
LIFE SCIENCES	81	45	55.6	22	27.2	90.5	7	8.6	7	8.6	45	42.2	40	26	65.0	7	17.5	97.1	6	15.0	1	2.5	26	18	
Biological Sciences	39	18	46.2	11	28.2	85.3	5	12.8	5	12.8	18	10	55.6	29	17	58.6	4	13.8	84.0	4	13.8	4	13.8	17	6
Psychology	22	15	68.2	6	27.3	100.0	1	4.5			15	3	20.0	23	17	73.9	4	17.4	95.5	1	4.3	1	4.3	17	7
Sport & Exercise Science	20	12	60.0	5	25.0	89.5	1	5.0	2	10.0	12	6	50.0	162	97	59.9	46	28.4	91.1	5	3.1	14	8.6	97	72
ENGINEERING & PHYSICAL SCIENCES	163	106	65.0	43	26.4	93.1	3	1.8	11	6.7	106	75.5	162	97	59.9	46	28.4	91.1	5	3.1	14	8.6	97	72	
Chemical Engineering	22	18	81.8	4		100.0					18	15	83.3	24	18	75.0	4	91.7					18	16	
Chemistry	47	24	51.1	19	40.4	91.5			4	8.5	24	18	75.0	33	15	45.5	14	42.4	93.5	2	6.1	2	6.1	15	8
Mechanical Engineering	35	28	80.0	6	17.1	100.0	1	2.9			28	24	85.7	57	36	63.2	14	24.6	90.9	2	3.5	5	8.8	36	29
Physics	19	9	47.4	9	47.4	94.7			1	5.3	9	4	44.4	18	10	55.6	5	27.8	86.2	1	5.6	2	11.1	10	6
Electrical, Electronic & Computer Engineering	26	19	73.1	3	11.5	88.0	1	3.8	3	11.5	19	16	84.2	21	14	66.7	5	23.8	90.5			2	9.5	14	11
Combined Studies	14	8	57.1	2	14.3	76.9	1	7.1	3	21.4	8	3	37.5	9	4	44.4	4	44.4	88.9			1	11.1	4	2
MANAGEMENT & LANGUAGES	169	127	75.1	24	14.2	95.0	10	5.9	8	4.7	127	71.7	166	128	77.1	21	12.7	95.5	10	6.0	7	4.2	128	95	
Accountancy & Finance	45	37	82.2	4	8.9	97.6	3	6.7	1	2.2	37	24	64.9	59	48	81.4	6	10.2	91.5			5	8.5	48	38
Economics	18	8	44.4	7	38.9	88.2	1	5.6	2	11.1	8	3	37.5	22	13	59.1	5	22.7	100.0	4	18.2		13	9	
Management	55	42	76.4	7	12.7	96.1	4	7.3	2	3.6	42	33	78.6	55	41	74.5	9	16.4	98.0	4	7.3	1	1.8	41	26
Management (Scottish Borders Campus)	2	2	100.0								2	1	50.0	2	2	100.0							2	2	
Languages	44	35	79.5	5	11.4	95.2	2	4.5	2	4.5	35	27	77.1	27	23	85.2	1	3.7	96.0	2	7.4	1	3.7	23	19
Combined Studies	5	3	60.0	1		80.0			1	20.0	3	3	100.0	1	1	100.0		100.0					1	1	
MATHEMATICAL & COMPUTER SCIENCES	95	69	72.6	14	14.7	91.2	4	4.2	8	8.4	69	53	76.8	119	91	76.5	16	13.4	93.0	8	6.7	8	6.7	91	80
Actuarial Mathematics & Statistics	17	15	88.2		0.0	93.8	1	5.9	1	5.9	15	14	93.3	46	39	84.8	1	2.2	88.9	5	10.9	5	10.9	39	39
Computer Science	33	22	66.7	7	21.2	90.6	1	3.0	3	9.1	22	19	86.4	40	28	70.0	8	20.0	94.7	2	5.0	2	5.0	28	24
Mathematics	45	32	71.1	7	15.6	90.7	2	4.4	4	8.9	32	20	62.5	33	24	72.7	7	21.2	96.9	1	3.0	1	3.0	24	17
TEXTILES & DESIGN	92	74	80.4	12	13.0	98.9	5	5.4	1	1.1	74	51.0	85	68	80.0	9	10.6	95.1	3	3.5	4	4.7	68	60.0	
Combined Studies	2	2	100.0			100.0					2	2	100.0	85	68	80.0	9	10.6	95.1	3	3.5	4	4.7	68	50
Textiles	90	72	80.0	12	13.3	98.8	5	5.6	1	1.1	72	49	68.1	85	68	80.0	9	10.6	95.1	3	3.5	4	4.7	68	50

The census date for graduate first destinations is 6 months following graduation
 'Employed' includes those due to start employment within the next month. 'Other' includes those who are not available for employment because of travel, family commitments, health or other reasons
 Note 1: This is the percentage of those in employment and/or further study as against the aggregated total who are in employment and/or further study or reported as 'seeking'
 Note 2: Graduate Employment is based on the SOC 2000 classification of occupations for studying the graduate labour market (Institute for Employment Research, Warwick)

SCHOOL/DIVISION	2008/09 (January 2010 census)													2007/08 (January 2009 census)												
	No. of Known Dest (KD)	No. in Emp	% of KD	No. in Further Study	% of KD	% in Emp/Study (note 1)	Not Available/Not Seeking	% of KD	Seeking	% of KD	Total in Emp	% in Graduate Level Job (note 2)	No. in Further Study	% of KD	% in Emp/Study (note 1)	Not Available/Not Seeking	% of KD	Seeking	% of KD	Total in Emp	% in Graduate Level Job (note 2)					
UNIVERSITY TOTAL	701	488	69.6	116	16.5	91.9	44	6.3	53	7.6	488	68.9	693	512	73.9	76	11.0	91.7	52	7.5	53	7.6	512	400	78.1	
BUILT ENVIRONMENT	101	67	66.3	11	10.9	83.9	8	7.9	15	14.9	67	73.1	96	76	79.2	6	6.3	95.3	10	10.4	4	4.2	76	67	88.2	
Architectural Engineering																										
Construction Management & Surveying	35	23	65.7	5	14.3	84.8	2	5.7	5	14.3	23	69.6	49	31	63.3	6	12.2	90.2	8	16.3	4	8.2	31	28	90.3	
Civil Engineering	41	28	68.3	4	9.8	82.1	2	4.9	7	17.1	28	78.6	34	32	94.1		100.0	2	5.9				32	28	87.5	
Urban Studies	25	16	64.0	2	8.0	85.7	4	16.0	3	12.0	16	68.8	13	13	100.0		100.0						13	11	84.6	
LIFE SCIENCES	74	49	66.2	14	18.9	90.0	4	5.4	7	9.5	49	51.0	86	52	60.5	18	20.9	88.6	7	8.1	9	10.5	52	30	57.7	
Biological Sciences	41	26	63.4	8	19.5	87.2	2	4.9	5	12.2	26	65.4	51	33	64.7	11	21.6	93.6	4	7.8	3	5.9	33	20	60.6	
Psychology	18	13	72.2	3	16.7	88.9			2	11.1	13	23.1	21	13	61.9	3	14.3	80.0	1	4.8	4	19.0	13	6	46.2	
Sport & Exercise Science	15	10	66.7	3	20.0	100.0	2	13.3			10	50.0	14	6	42.9	4	28.6	83.3	2	14.3	2	14.3	6	4	66.7	
ENGINEERING & PHYSICAL SCIENCES	154	95	61.7	41	26.6	91.9	6	3.9	12	7.8	95	77.9	133	85	63.9	23	17.3	85.0	6	4.5	19	14.3	85	70	82.4	
Chemical Engineering	17	16	94.1			94.1			1	5.9	16	14	20	15	75.0	1	5.0	84.2	1	5.0	3	15.0	15	13	86.7	
Chemistry	40	17	42.5	19	47.5	92.3	1	2.5	3	7.5	17	14	19	8	42.1	9	47.4	89.5			2	10.5	8	7	87.5	
Mechanical Engineering	40	28	70.0	7	17.5	89.7	1	2.5	4	10.0	28	82.1	43	30	69.8	4	9.3	85.0	3	7.0	6	14.0	30	27	90.0	
Physics	18	8	44.4	6	33.3	82.4	1	5.6	3	16.7	8	5	13	6	46.2	4	30.8	83.3	1	7.7	2	15.4	6	6	100.0	
Electrical, Electronic & Computer Engineering	25	19	76.0	4	16.0	100.0	2	8.0			19	15	20	13	65.0	3	15.0	84.2	1	5.0	3	15.0	13	10	76.9	
Combined Studies	14	7	50.0	5	35.7	92.3	1	7.1	1	7.1	7	3	18	13	72.2	2	11.1	83.3			3	16.7	13	7	53.8	
MANAGEMENT & LANGUAGES	186	148	79.6	17	9.1	94.3	11	5.9	10	5.4	148	67.6	182	140	76.9	15	8.2	92.3	14	7.7	13	7.1	140	99	70.7	
Accountancy & Finance	49	41	83.7	2	4.1	95.6	4	8.2	2	4.1	41	27	46	39	84.8			90.7	3	6.5	4	8.7	39	29	74.4	
Economics	13	7	53.8	4	30.8	91.7	1	7.7	1	7.7	7	3	16	13	81.3	2	12.5	100.0	1	6.3			13	10	76.9	
Management	72	57	79.2	8	11.1	95.6	4	5.6	3	4.2	57	39	57	41	71.9	6	10.5	95.9	8	14.0	2	3.5	41	28	68.3	
Management (Scottish Borders Campus)	5	5	100.0			100.0					5	3	12	9	75.0	3	25.0	100.0					9	7	77.8	
Languages	40	34	85.0	3	7.5	94.9	1	2.5	2	5.0	34	25	42	31	73.8	4	9.5	85.4	1	2.4	6	14.3	31	21	67.7	
Combined Studies	7	4	57.1			66.7	1	14.3	2	28.6	4	3	9	7	77.8			87.5	1	11.1	1	11.1	7	4	57.1	
MATHEMATICAL & COMPUTER SCIENCES	83	53	63.9	20	24.1	93.6	5	6.0	5	6.0	53	31	91	74	81.3	8	8.8	93.2	3	3.3	6	6.6	74	59	79.7	
Actuarial Mathematics & Statistics	26	18	69.2	5			3	11.5			18	15	24	23	95.8			100.0	1	4.2			23	22	95.7	
Computer Science	28	19	67.9	7	25.0	92.9			2	7.1	19	8	31	23	74.2	3	9.7	86.7	1	3.2	4	12.9	23	17	73.9	
Mathematics	29	16	55.2	8	27.6	86.9	2	6.9	3	10.3	16	8	36	28	77.8	5	13.9	94.3	1	2.8	2	5.6	28	20	71.4	
TEXTILES & DESIGN	103	76	73.8	13	12.6	95.7	10	9.7	4	3.9	76	57	105	85	81.0	6	5.7	97.8	12	11.4	2	1.9	85	75	88.2	
Combined Studies																										
Textiles	103	76	73.8	13	12.6	95.7	10	9.7	4	3.9	76	57	105	85	81.0	6	5.7	97.8	12	11.4	2	1.9	85	75	88.2	

The census date for graduate first destinations is 6 months following graduation
'Employed' includes those due to start employment within the next month. 'Other' includes those who are not available for employment because of travel, family commitments, health or other reasons

Note 1: This is the percentage of those in employment and/or further study as against the aggregated total who are in employment and/or further study or reported as 'seeking'

Note 2: Graduate Employment is based on the SOC 2000 classification of occupations for studying the graduate labour market (Institute for Employment Research, Warwick)

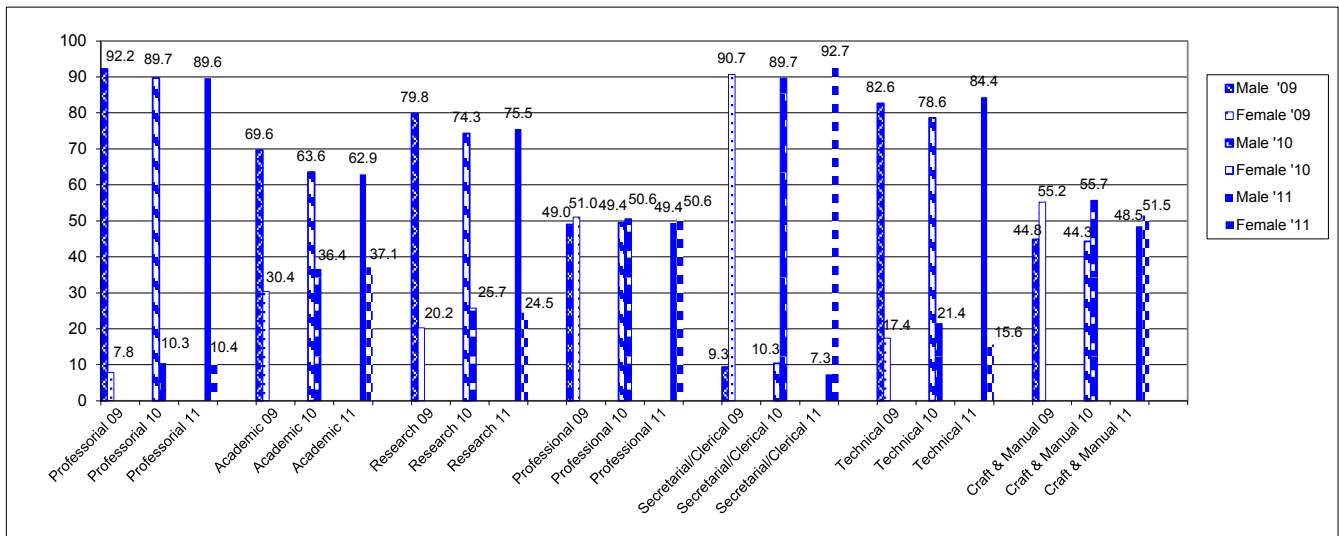
	2011	2010	2009	2008	2007	2006	2005	2004	2003	2002	2001	2000	1999	1998	1997	1996	1995	1994	1993	1992	1991	1990	1989	1988	1987	1986	1985	1984	1983	1982	1981	1980	1979	1978	1977	1976	1975	1974	1973	1972	1971	1970	1969	1968	1967	1966	1965	1964	1963	1962	1961	1960	1959	1958	1957	1956	1955	1954	1953	1952	1951	1950	1949	1948	1947	1946	1945	1944	1943	1942	1941	1940	1939	1938	1937	1936	1935	1934	1933	1932	1931	1930	1929	1928	1927	1926	1925	1924	1923	1922	1921	1920	1919	1918	1917	1916	1915	1914	1913	1912	1911	1910	1909	1908	1907	1906	1905	1904	1903	1902	1901	1900	1899	1898	1897	1896	1895	1894	1893	1892	1891	1890	1889	1888	1887	1886	1885	1884	1883	1882	1881	1880	1879	1878	1877	1876	1875	1874	1873	1872	1871	1870	1869	1868	1867	1866	1865	1864	1863	1862	1861	1860	1859	1858	1857	1856	1855	1854	1853	1852	1851	1850	1849	1848	1847	1846	1845	1844	1843	1842	1841	1840	1839	1838	1837	1836	1835	1834	1833	1832	1831	1830	1829	1828	1827	1826	1825	1824	1823	1822	1821	1820	1819	1818	1817	1816	1815	1814	1813	1812	1811	1810	1809	1808	1807	1806	1805	1804	1803	1802	1801	1800	1799	1798	1797	1796	1795	1794	1793	1792	1791	1790	1789	1788	1787	1786	1785	1784	1783	1782	1781	1780	1779	1778	1777	1776	1775	1774	1773	1772	1771	1770	1769	1768	1767	1766	1765	1764	1763	1762	1761	1760	1759	1758	1757	1756	1755	1754	1753	1752	1751	1750	1749	1748	1747	1746	1745	1744	1743	1742	1741	1740	1739	1738	1737	1736	1735	1734	1733	1732	1731	1730	1729	1728	1727	1726	1725	1724	1723	1722	1721	1720	1719	1718	1717	1716	1715	1714	1713	1712	1711	1710	1709	1708	1707	1706	1705	1704	1703	1702	1701	1700	1699	1698	1697	1696	1695	1694	1693	1692	1691	1690	1689	1688	1687	1686	1685	1684	1683	1682	1681	1680	1679	1678	1677	1676	1675	1674	1673	1672	1671	1670	1669	1668	1667	1666	1665	1664	1663	1662	1661	1660	1659	1658	1657	1656	1655	1654	1653	1652	1651	1650	1649	1648	1647	1646	1645	1644	1643	1642	1641	1640	1639	1638	1637	1636	1635	1634	1633	1632	1631	1630	1629	1628	1627	1626	1625	1624	1623	1622	1621	1620	1619	1618	1617	1616	1615	1614	1613	1612	1611	1610	1609	1608	1607	1606	1605	1604	1603	1602	1601	1600	1599	1598	1597	1596	1595	1594	1593	1592	1591	1590	1589	1588	1587	1586	1585	1584	1583	1582	1581	1580	1579	1578	1577	1576	1575	1574	1573	1572	1571	1570	1569	1568	1567	1566	1565	1564	1563	1562	1561	1560	1559	1558	1557	1556	1555	1554	1553	1552	1551	1550	1549	1548	1547	1546	1545	1544	1543	1542	1541	1540	1539	1538	1537	1536	1535	1534	1533	1532	1531	1530	1529	1528	1527	1526	1525	1524	1523	1522	1521	1520	1519	1518	1517	1516	1515	1514	1513	1512	1511	1510	1509	1508	1507	1506	1505	1504	1503	1502	1501	1500	1499	1498	1497	1496	1495	1494	1493	1492	1491	1490	1489	1488	1487	1486	1485	1484	1483	1482	1481	1480	1479	1478	1477	1476	1475	1474	1473	1472	1471	1470	1469	1468	1467	1466	1465	1464	1463	1462	1461	1460	1459	1458	1457	1456	1455	1454	1453	1452	1451	1450	1449	1448	1447	1446	1445	1444	1443	1442	1441	1440	1439	1438	1437	1436	1435	1434	1433	1432	1431	1430	1429	1428	1427	1426	1425	1424	1423	1422	1421	1420	1419	1418	1417	1416	1415	1414	1413	1412	1411	1410	1409	1408	1407	1406	1405	1404	1403	1402	1401	1400	1399	1398	1397	1396	1395	1394	1393	1392	1391	1390	1389	1388	1387	1386	1385	1384	1383	1382	1381	1380	1379	1378	1377	1376	1375	1374	1373	1372	1371	1370	1369	1368	1367	1366	1365	1364	1363	1362	1361	1360	1359	1358	1357	1356	1355	1354	1353	1352	1351	1350	1349	1348	1347	1346	1345	1344	1343	1342	1341	1340	1339	1338	1337	1336	1335	1334	1333	1332	1331	1330	1329	1328	1327	1326	1325	1324	1323	1322	1321	1320	1319	1318	1317	1316	1315	1314	1313	1312	1311	1310	1309	1308	1307	1306	1305	1304	1303	1302	1301	1300	1299	1298	1297	1296	1295	1294	1293	1292	1291	1290	1289	1288	1287	1286	1285	1284	1283	1282	1281	1280	1279	1278	1277	1276	1275	1274	1273	1272	1271	1270	1269	1268	1267	1266	1265	1264	1263	1262	1261	1260	1259	1258	1257	1256	1255	1254	1253	1252	1251	1250	1249	1248	1247	1246	1245	1244	1243	1242	1241	1240	1239	1238	1237	1236	1235	1234	1233	1232	1231	1230	1229	1228	1227	1226	1225	1224	1223	1222	1221	1220	1219	1218	1217	1216	1215	1214	1213	1212	1211	1210	1209	1208	1207	1206	1205	1204	1203	1202	1201	1200	1199	1198	1197	1196	1195	1194	1193	1192	1191	1190	1189	1188	1187	1186	1185	1184	1183	1182	1181	1180	1179	1178	1177	1176	1175	1174	1173	1172	1171	1170	1169	1168	1167	1166	1165	1164	1163	1162	1161	1160	1159	1158	1157	1156	1155	1154	1153	1152	1151	1150	1149	1148	1147	1146	1145	1144	1143	1142	1141	1140	1139	1138	1137	1136	1135	1134	1133	1132	1131	1130	1129	1128	1127	1126	1125	1124	1123	1122	1121	1120	1119	1118	1117	1116	1115	1114	1113	1112	1111	1110	1109	1108	1107	1106	1105	1104	1103	1102	1101	1100	1099	1098	1097	1096	1095	1094	1093	1092	1091	1090	1089	1088	1087	1086	1085	1084	1083	1082	1081	1080	1079	1078	1077	1076	1075	1074	1073	1072	1071	1070	1069	1068	1067	1066	1065	1064	1063	1062	1061	1060	1059	1058	1057	1056	1055	1054	1053	1052	1051	1050	1049	1048	1047	1046	1045	1044	1043	1042	1041	1040	1039	1038	1037	1036	1035	1034	1033	1032	1031	1030	1029	1028	1027	1026	1025	1024	1023	1022	1021	1020	1019	1018	1017	1016	1015	1014	1013	1012	1011	1010	1009	1008	1007	1006	1005	1004	1003	1002	1001	1000	999	998	997	996	995	994	993	992	991	990	989	988	987	986	985	984	983	982	981	980	979	978	977	976	975	974	973	972	971	970	969	968	967	966	965	964	963	962	961	960	959	958	957	956	955	954	953	952	951	950	949	948	947	946	945	944	943	942	941	940	939	938	937	936	935	934	933	932	931	930	929	928	927	926	925	924	923	922	921	920	919	918	917	916	915	914	913	912	911	910	909	908	907	906	905	904	903	902	901	900	899	898	897	896	895	894	893	892	891	890	889	888	887	886	885	884	883	882	881	880	879	878	877	876	875	874	873	872	871	870	869	868	867	866	865	864	863	862	861	860	859	858	857	856	855	854	853	852	851	850	849	848	847	846	845	844	843	842	841	840	839	838	837	836	835	834	833	832	831	830	829	828	827	826	825	824	823	822	821	820	819	818	817	816	815	814	813	812	811	810	809	808	807	806	805	804	803	802	801	800	799	798	797	796	795	794	793	792	791	790	789	788	787	786	785	784	783	782	781	780	779	778	777	776	775	774	773	772	771	770	769	768	767	766	765	764	763	762	761	760	759	758	757	756	755	754	7
--	------	------	------	------	------	------	------	------	------	------	------	------	------	------	------	------	------	------	------	------	------	------	------	------	------	------	------	------	------	------	------	------	------	------	------	------	------	------	------	------	------	------	------	------	------	------	------	------	------	------	------	------	------	------	------	------	------	------	------	------	------	------	------	------	------	------	------	------	------	------	------	------	------	------	------	------	------	------	------	------	------	------	------	------	------	------	------	------	------	------	------	------	------	------	------	------	------	------	------	------	------	------	------	------	------	------	------	------	------	------	------	------	------	------	------	------	------	------	------	------	------	------	------	------	------	------	------	------	------	------	------	------	------	------	------	------	------	------	------	------	------	------	------	------	------	------	------	------	------	------	------	------	------	------	------	------	------	------	------	------	------	------	------	------	------	------	------	------	------	------	------	------	------	------	------	------	------	------	------	------	------	------	------	------	------	------	------	------	------	------	------	------	------	------	------	------	------	------	------	------	------	------	------	------	------	------	------	------	------	------	------	------	------	------	------	------	------	------	------	------	------	------	------	------	------	------	------	------	------	------	------	------	------	------	------	------	------	------	------	------	------	------	------	------	------	------	------	------	------	------	------	------	------	------	------	------	------	------	------	------	------	------	------	------	------	------	------	------	------	------	------	------	------	------	------	------	------	------	------	------	------	------	------	------	------	------	------	------	------	------	------	------	------	------	------	------	------	------	------	------	------	------	------	------	------	------	------	------	------	------	------	------	------	------	------	------	------	------	------	------	------	------	------	------	------	------	------	------	------	------	------	------	------	------	------	------	------	------	------	------	------	------	------	------	------	------	------	------	------	------	------	------	------	------	------	------	------	------	------	------	------	------	------	------	------	------	------	------	------	------	------	------	------	------	------	------	------	------	------	------	------	------	------	------	------	------	------	------	------	------	------	------	------	------	------	------	------	------	------	------	------	------	------	------	------	------	------	------	------	------	------	------	------	------	------	------	------	------	------	------	------	------	------	------	------	------	------	------	------	------	------	------	------	------	------	------	------	------	------	------	------	------	------	------	------	------	------	------	------	------	------	------	------	------	------	------	------	------	------	------	------	------	------	------	------	------	------	------	------	------	------	------	------	------	------	------	------	------	------	------	------	------	------	------	------	------	------	------	------	------	------	------	------	------	------	------	------	------	------	------	------	------	------	------	------	------	------	------	------	------	------	------	------	------	------	------	------	------	------	------	------	------	------	------	------	------	------	------	------	------	------	------	------	------	------	------	------	------	------	------	------	------	------	------	------	------	------	------	------	------	------	------	------	------	------	------	------	------	------	------	------	------	------	------	------	------	------	------	------	------	------	------	------	------	------	------	------	------	------	------	------	------	------	------	------	------	------	------	------	------	------	------	------	------	------	------	------	------	------	------	------	------	------	------	------	------	------	------	------	------	------	------	------	------	------	------	------	------	------	------	------	------	------	------	------	------	------	------	------	------	------	------	------	------	------	------	------	------	------	------	------	------	------	------	------	------	------	------	------	------	------	------	------	------	------	------	------	------	------	------	------	------	------	------	------	------	------	------	------	------	------	------	------	------	------	------	------	------	------	------	------	------	------	------	------	------	------	------	------	------	------	------	------	------	------	------	------	------	------	------	------	------	------	------	------	------	------	------	------	------	------	------	------	------	------	------	------	------	------	------	------	------	------	------	------	------	------	------	------	------	------	------	------	------	------	------	------	------	------	------	------	------	------	------	------	------	------	------	------	------	------	------	------	------	------	------	------	------	------	------	------	------	------	------	------	------	------	------	------	------	------	------	------	------	------	------	------	------	------	------	------	------	------	------	------	------	------	------	------	------	------	------	------	------	------	------	------	------	------	------	------	------	------	------	------	------	------	------	------	------	------	------	------	------	------	------	------	------	------	------	------	------	------	------	------	------	------	------	------	------	------	------	------	------	------	------	------	------	------	------	------	------	------	------	------	------	------	------	------	------	------	------	------	------	------	------	------	------	------	------	------	------	------	------	------	------	------	------	------	------	------	------	------	------	------	------	------	------	------	------	------	------	------	------	------	------	------	------	------	------	------	------	------	------	------	------	------	------	------	------	------	------	------	------	------	------	------	------	------	------	------	------	------	------	------	------	------	------	------	------	------	------	------	------	------	------	------	------	------	------	------	------	------	------	------	------	------	------	------	------	------	------	------	------	------	------	------	------	------	------	------	------	------	------	------	------	------	------	------	------	------	------	------	------	------	------	------	------	------	------	------	------	------	------	------	------	------	------	------	------	------	------	------	------	------	------	------	------	------	------	------	------	------	------	------	------	------	------	------	------	------	------	------	------	------	------	------	------	------	------	------	------	-----	-----	-----	-----	-----	-----	-----	-----	-----	-----	-----	-----	-----	-----	-----	-----	-----	-----	-----	-----	-----	-----	-----	-----	-----	-----	-----	-----	-----	-----	-----	-----	-----	-----	-----	-----	-----	-----	-----	-----	-----	-----	-----	-----	-----	-----	-----	-----	-----	-----	-----	-----	-----	-----	-----	-----	-----	-----	-----	-----	-----	-----	-----	-----	-----	-----	-----	-----	-----	-----	-----	-----	-----	-----	-----	-----	-----	-----	-----	-----	-----	-----	-----	-----	-----	-----	-----	-----	-----	-----	-----	-----	-----	-----	-----	-----	-----	-----	-----	-----	-----	-----	-----	-----	-----	-----	-----	-----	-----	-----	-----	-----	-----	-----	-----	-----	-----	-----	-----	-----	-----	-----	-----	-----	-----	-----	-----	-----	-----	-----	-----	-----	-----	-----	-----	-----	-----	-----	-----	-----	-----	-----	-----	-----	-----	-----	-----	-----	-----	-----	-----	-----	-----	-----	-----	-----	-----	-----	-----	-----	-----	-----	-----	-----	-----	-----	-----	-----	-----	-----	-----	-----	-----	-----	-----	-----	-----	-----	-----	-----	-----	-----	-----	-----	-----	-----	-----	-----	-----	-----	-----	-----	-----	-----	-----	-----	-----	-----	-----	-----	-----	-----	-----	-----	-----	-----	-----	-----	-----	-----	-----	-----	-----	-----	-----	-----	-----	-----	-----	-----	-----	-----	-----	-----	-----	-----	-----	-----	-----	-----	-----	-----	-----	-----	-----	-----	-----	-----	-----	-----	-----	-----	-----	-----	-----	-----	---

STAFF: 2009 - 2011

ALL STAFF BY CONTRACT TYPE: AT END DECEMBER 2011

GRADE RANGE	End December 2011					End December 2010					End December 2009				
	ft/pt	Gender	No.	% of category	% of all staff (Scotland)	ft/pt	Gender	No.	% of category	% of all staff (Scotland)	ft/pt	Gender	No.	% of category	% of all staff (Scotland)
University Total	1785					1800					1702				
Professional			135	100.0	7.6			136	100.0	7.8			128	100.0	7.9
	ft	F	13	9.6	0.7	ft	F	14	10.3	0.8	ft	F	10	7.8	0.6
		M	108	80.0	6.1		M	112	82.4	6.4		M	102	79.7	6.3
	pt	F	1	0.7	0.1	pt	F				pt	F			
		M	13	9.6	0.7		M	10	7.4	0.6		M	16	12.5	1.0
Academic (non-professional)			345	100.0	19.3			343	100.0	19.6			316	100.0	19.4
	ft	F	88	25.5	4.9	ft	F	86	25.1	4.9	ft	F	71	22.5	4.4
		M	187	54.2	10.5		M	189	55.1	10.8		M	191	60.4	11.7
	pt	F	40	11.6	2.2	pt	F	39	11.4	2.2	pt	F	25	7.9	1.5
		M	30	8.7	1.7		M	29	8.5	1.7		M	29	9.2	1.8
Research			184	100.0	10.3			175	100.0	10.0			173	100.0	10.6
	ft	F	36	19.6	2.0	ft	F	36	20.6	2.1	ft	F	27	15.6	1.7
		M	122	66.3	6.8		M	120	68.6	6.8		M	121	69.9	7.4
	pt	F	9	4.9	0.5	pt	F	9	5.1	0.5	pt	F	8	4.6	0.5
		M	17	9.2	1.0		M	10	5.7	0.6		M	17	9.8	1.0
Professional			524	100.0	29.4			529	100.0	30.2			504	100.0	30.9
	ft	F	191	36.5	10.7	ft	F	196	37.1	11.2	ft	F	192	38.1	11.8
		M	251	47.9	14.1		M	247	46.7	14.1		M	241	47.8	14.8
	pt	F	74	14.1	4.1	pt	F	74	14.0	4.2	pt	F	60	11.9	3.7
		M	8	1.5	0.4		M	12	2.3	0.7		M	11	2.2	0.7
Secretarial/Clerical			233	100.0	13.1			261	100.0	14.9			236	100.0	14.5
	ft	F	117	50.2	6.6	ft	F	131	50.2	7.5	ft	F	126	53.4	7.7
		M	12	5.2	0.7		M	20	7.7	1.1		M	17	7.2	1.0
	pt	F	99	42.5	5.5	pt	F	103	39.5	5.9	pt	F	88	37.3	5.4
		M	5	2.1	0.3		M	7	2.7	0.4		M	5	2.1	0.3
Technical			32	100.0	1.8			28	100.0	1.6			23	100.0	1.4
	ft	F	3	9.4	0.2	ft	F	4	14.3	0.2	ft	F	2	8.7	0.1
		M	21	65.6	1.2		M	19	67.9	1.1		M	18	78.3	1.1
	pt	F	2	6.3	0.1	pt	F	2	7.1	0.1	pt	F	2	8.7	0.1
		M	6	18.8	0.3		M	3	10.7	0.2		M	1	4.3	0.1
Craft			26	100.0	1.5			27	100.0	1.5			27	100.0	1.7
	ft	M	26	100.0	1.5	ft	M	26	96.3	1.5	ft	M	26	96.3	1.6
	pt	M				pt	M	1	3.7	0.1	pt	M	1	3.7	0.1
Manual			258	100.0	14.5			255	100.0	14.5			259	100.0	15.9
	ft	F	50	19.4	2.8	ft	F	50	19.6	2.9	ft	F	53	20.5	3.3
		M	85	32.9	4.8		M	84	32.9	4.8		M	84	32.4	5.2
	pt	F	108	41.9	6.1	pt	F	107	42.0	6.1	pt	F	105	40.5	6.4
		M	15	5.8	0.8		M	14	5.5	0.8		M	17	6.6	1.0
Dubai Campus			48	100.0				46	100.0				36	100.0	
	ft	F	18	37.5		ft	F	14	30.4		ft	F	6	16.7	
		M	28	58.3			M	28	60.9			M	23	63.9	
	pt	F	2	4.2		pt	F	1	2.2		pt	F	1	2.8	
		M					M	3	6.5			M	6	16.7	

ALL STAFF BY GENDER & CONTRACT TYPE: PERCENTAGE OF TOTAL



UNIVERSITY ALUMNI AT DECEMBER 2011

ALL ALUMNI BY COUNTRY OF DOMICILE: 2010/11

CONTINENT/COUNTRY	2010/11	%
UNIVERSITY TOTAL	82,062	
United Kingdom	47,099	57.4
Malaysia	3,475	7.4
China	3,250	4.0
Israel	2,684	3.3
France	2,200	2.7
Norway	2,167	2.6
Singapore	1,895	2.3
USA	1,638	2.0
Greece	1,453	1.8
Canada	1,409	1.7
Germany	1,166	1.4
Trinidad & Tobago	1,123	1.4
Republic of Ireland	1,111	1.4
United Arab Emirates	868	1.1
India	688	0.8
Australia	654	0.8
South Africa	651	0.8
Spain	538	0.7
Russian Federation	527	0.6
Nigeria	408	0.5
Switzerland	274	0.3
Egypt	260	0.3
Iran	257	0.3
Zambia	249	0.3
Kingdom of Saudi Arabia	239	0.3
Netherlands	233	0.3
Sultanate of Oman	216	0.3
Kenya	212	0.3
Sweden	208	0.3
Uganda	192	0.2
Pakistan	180	0.2
Italy	166	0.2
Denmark	164	0.2
New Zealand	160	0.2
Japan	152	0.2
Belgium	151	0.2
Mauritius	139	0.2
Taiwan	137	0.2
Thailand	128	0.2
Barbados	126	0.2
Kingdom of Bahrain	124	0.2
Mexico	112	0.1
Libya	109	0.1
Austria	100	0.1
OTHER ASIA	961	
OTHER EUROPE	767	
OTHER AFRICA	495	
OTHER AMERICAS	515	
OTHER AUSTRALIA	17	

ALUMNI BY GENDER: 2010/11

		%
Female	27,225	33.7
Male	53,674	66.3

ALUMNI BY AGE RANGE: 2010/11

		%
Age 21-29	14,385	21.4
Age 30-39	25,610	38.1
Age 40-49	16,812	25.0
Age 50-59	7,364	11.0
Age 60-69	2,359	3.5
Age 70-79	437	0.7
Age 80-89	162	0.2
Age 90-99	20	~
Age 100+	3	~

ALUMNI BY SCHOOL/INSTITUTE: 2010/11

		%
Built Environment	7,005	15.1
Engineering & Physical Science	5,414	11.7
Life Sciences	2,293	4.9
Management & Languages	8,190	17.6
Mathematical & Computer Science	4,137	8.9
Textiles & Design	2,231	4.8
Petroleum Engineering	2,020	4.3
EBS	11,231	24.2
Edinburgh College of Art	3,797	8.2
Staff Learning & Development Unit	106	0.2
International Centre for Island Technology	15	~

Contact us

HERIOT-WATT UNIVERSITY

Edinburgh Campus

Edinburgh EH14 4AS

☎ 0131 449 5111

Scottish Borders Campus

Galashiels TD1 3HF

☎ 0870 050 5152

Orkney Campus

Old Academy, Back Road, Stromness

Orkney Islands

Scotland KW16 3AW

☎ 01856 850 605

Dubai Campus

Dubai International Academic City

PO Box 294345

Dubai

UAE

☎ 00 971 4 435 8700

CORPORATE COMMUNICATIONS

☎ 0131 451 3242

@ pr@hw.ac.uk

STUDENT RECRUITMENT AND ADMISSIONS

☎ 0131 451 3451

@ edu.liaison@hw.ac.uk

RESEARCH AND ENTERPRISE SERVICES

☎ 0131 451 3192

@ res@hw.ac.uk