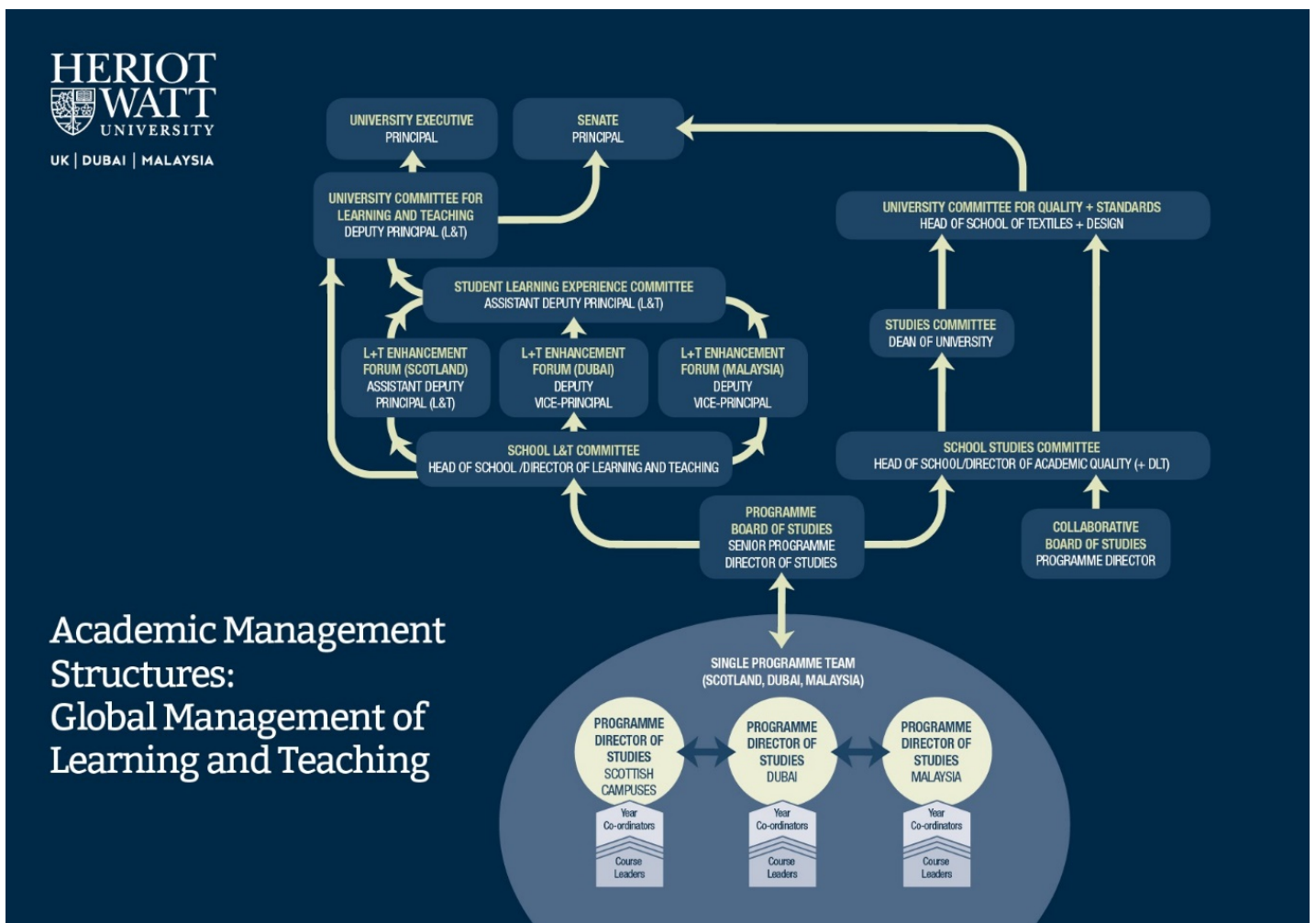


ACADEMIC STRUCTURES AT MULTIPLE CAMPUSES

Key Points

1. A University-wide academic management structure across all campuses was introduced from session 2014/15.
2. The academic management structure has been implemented by all Schools.
3. **Heads of School have responsibility for all academic matters** relating to programmes offered in their School's discipline areas across all campuses, regardless of mode or location of delivery.
4. The academic management structure of Schools is as follows:

(1) School Learning and Teaching Committee	(5) Director of Academic Quality
(2) School Studies Committee	(6) Senior/Programme Director of Studies
(3) Programme Board of Studies	(7) Year Co-ordinator
(4) Director of Learning and Teaching	(8) Senior/Course Leader



References and Further Information

Academic Structures at Multiple Campuses: <https://www.hw.ac.uk/services/docs/learning-teaching/policies/amsmultiplecampuses.pdf>

Learning and Teaching Policies and Procedures: <https://www.hw.ac.uk/services/academic-registry/quality/learning-teaching/policy-bank.htm>

Learning and Teaching Briefing Papers

This briefing paper has been produced by the Academic Registry and is one of a series related to Learning and Teaching. <https://www.hw.ac.uk/services/academic-registry/quality/learning-teaching/learning-and-teaching-briefing-papers.htm>