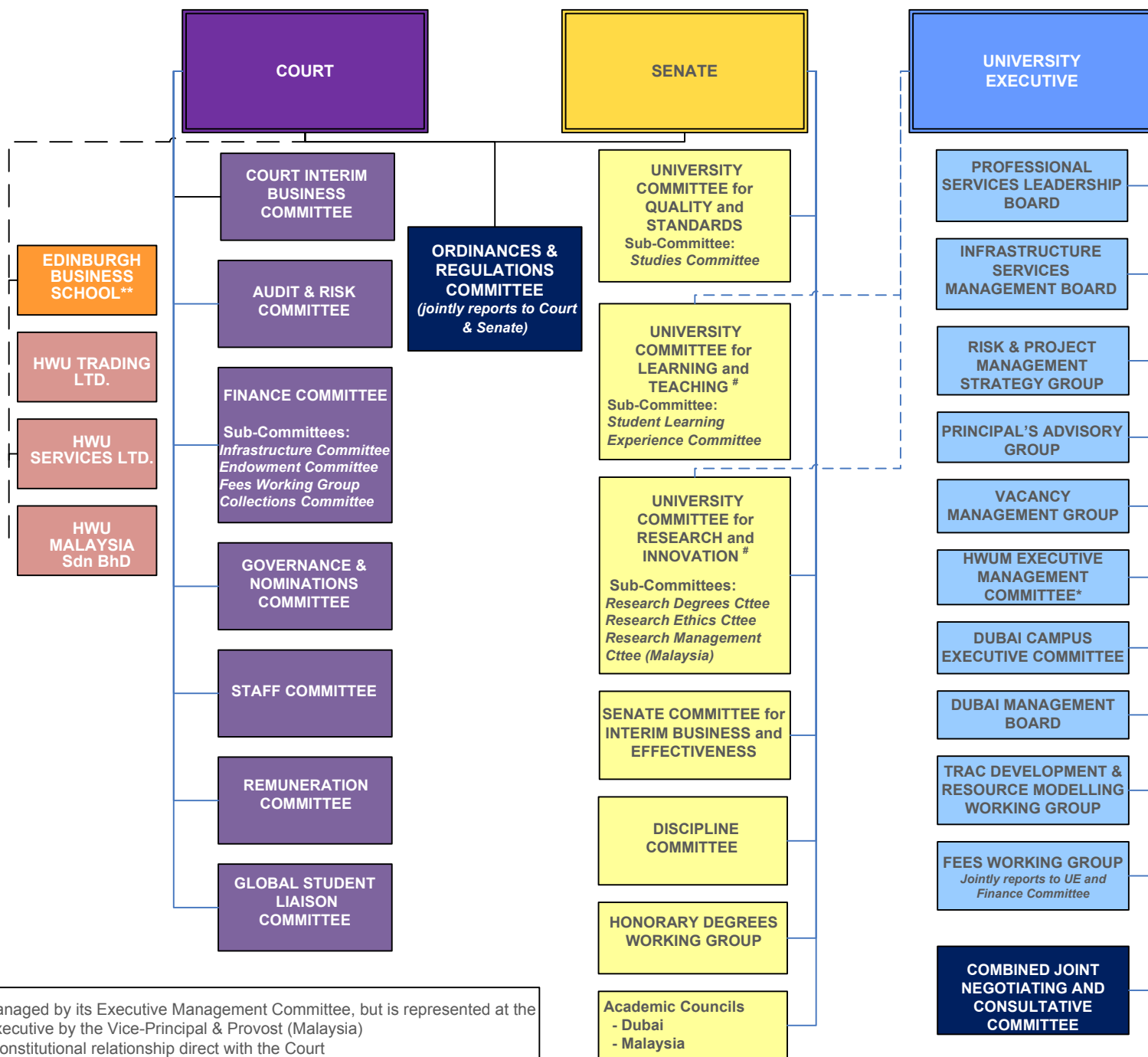


HERIOT-WATT UNIVERSITY GOVERNANCE STRUCTURE



* HWUM is managed by its Executive Management Committee, but is represented at the University Executive by the Vice-Principal & Provost (Malaysia)
 **EBS has a constitutional relationship direct with the Court
 # UCLT and UCRI report on certain matters to the Senate and on other matters to the University Executive