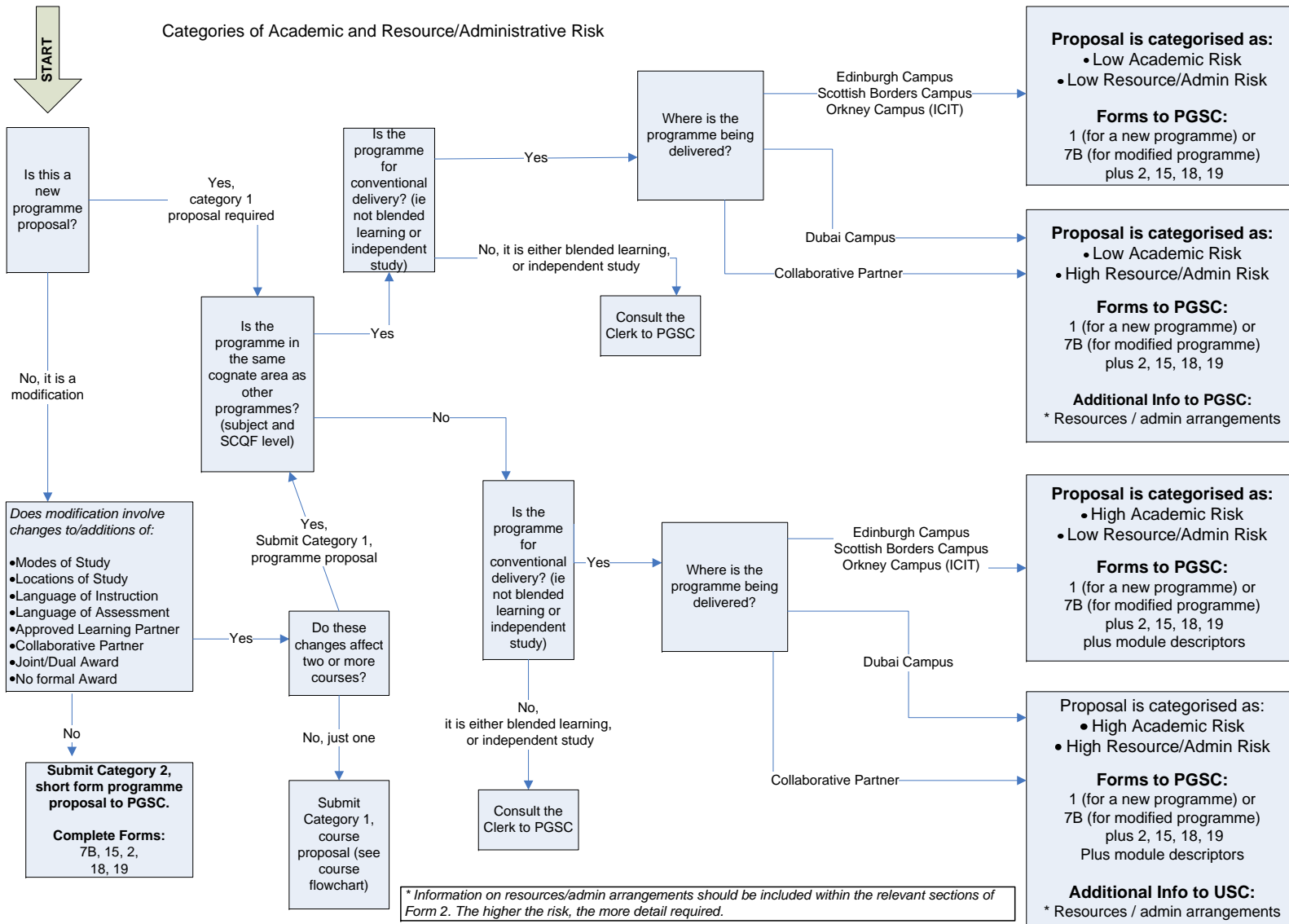


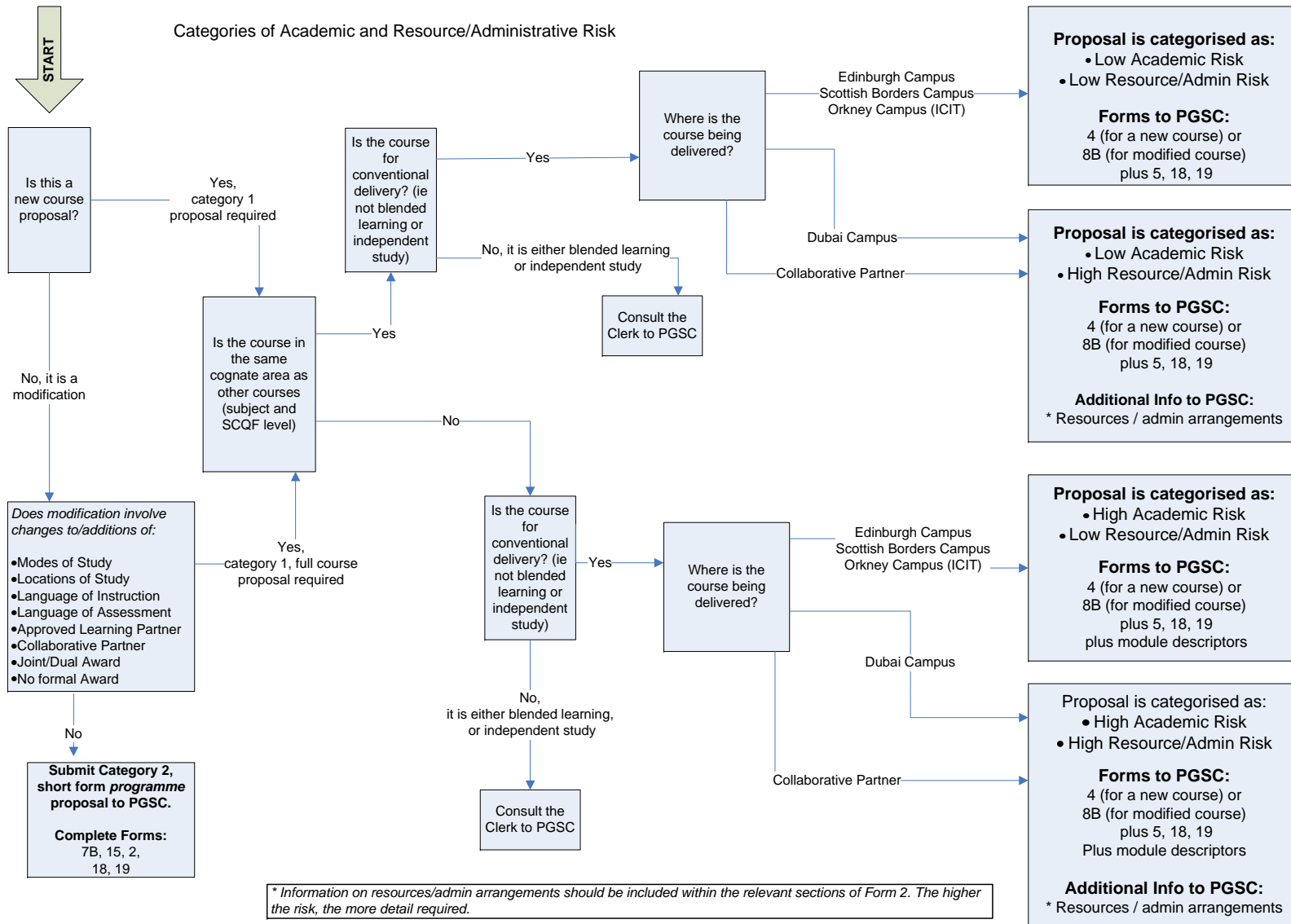
# RAY SUBMISSIONS – POSTGRADUATE PROGRAMMES

Categories of Academic and Resource/Administrative Risk



# RAY SUBMISSIONS – POSTGRADUATE COURSES

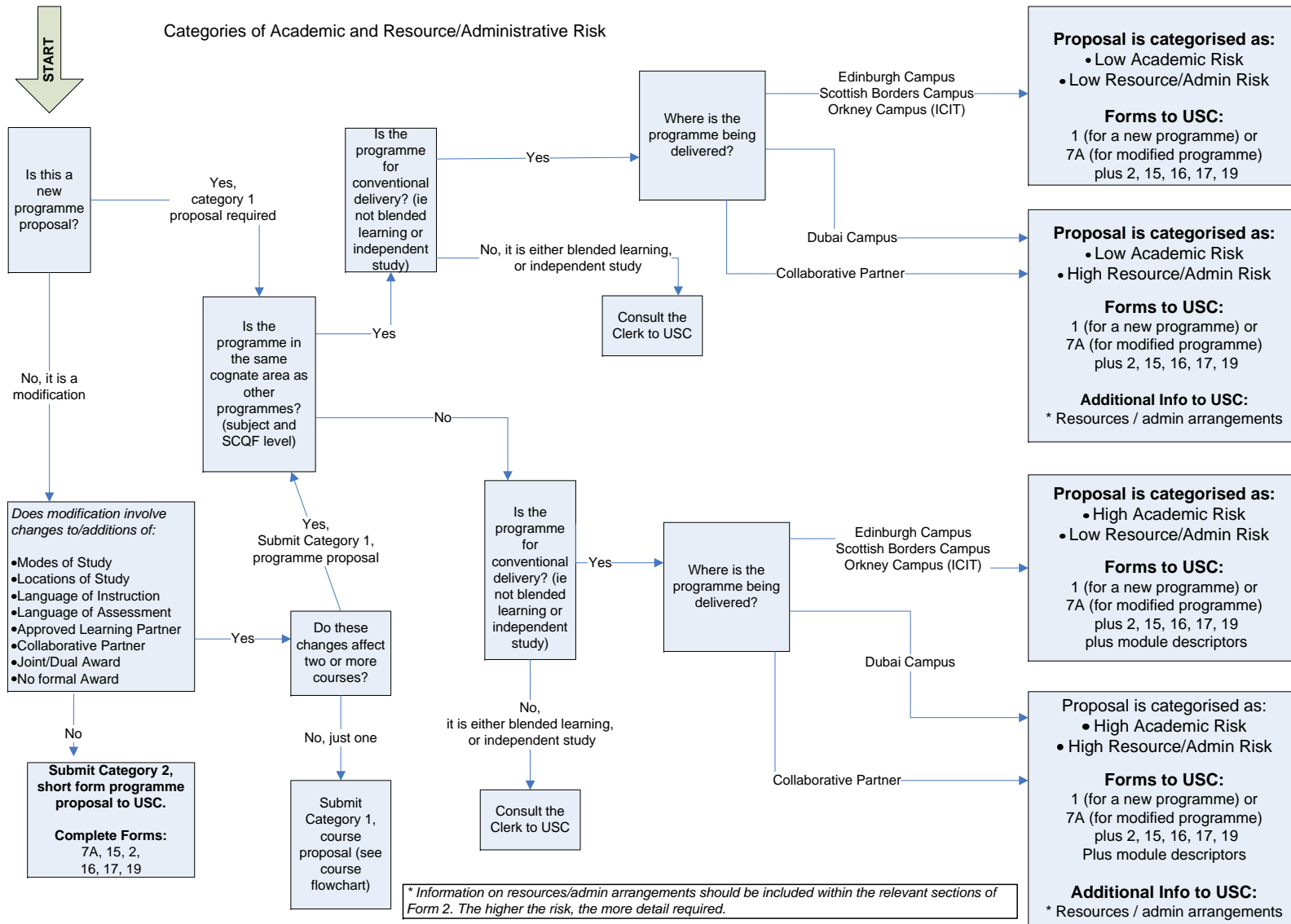
Categories of Academic and Resource/Administrative Risk



\* Information on resources/admin arrangements should be included within the relevant sections of Form 2. The higher the risk, the more detail required.

# RAY SUBMISSIONS – UNDERGRADUATE PROGRAMMES

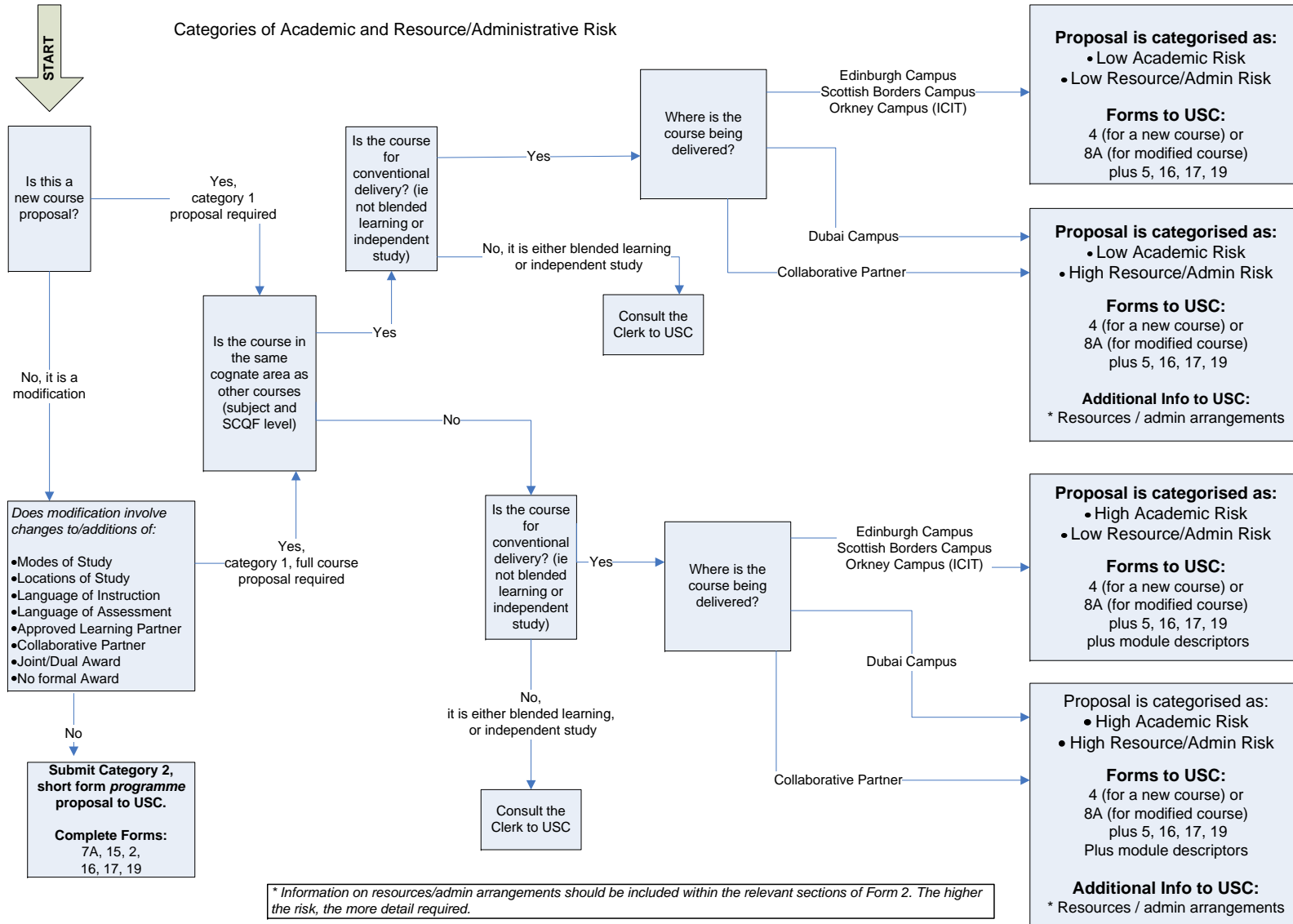
Categories of Academic and Resource/Administrative Risk



\* Information on resources/admin arrangements should be included within the relevant sections of Form 2. The higher the risk, the more detail required.

# RAY SUBMISSIONS – UNDERGRADUATE COURSES

Categories of Academic and Resource/Administrative Risk



\* Information on resources/admin arrangements should be included within the relevant sections of Form 2. The higher the risk, the more detail required.