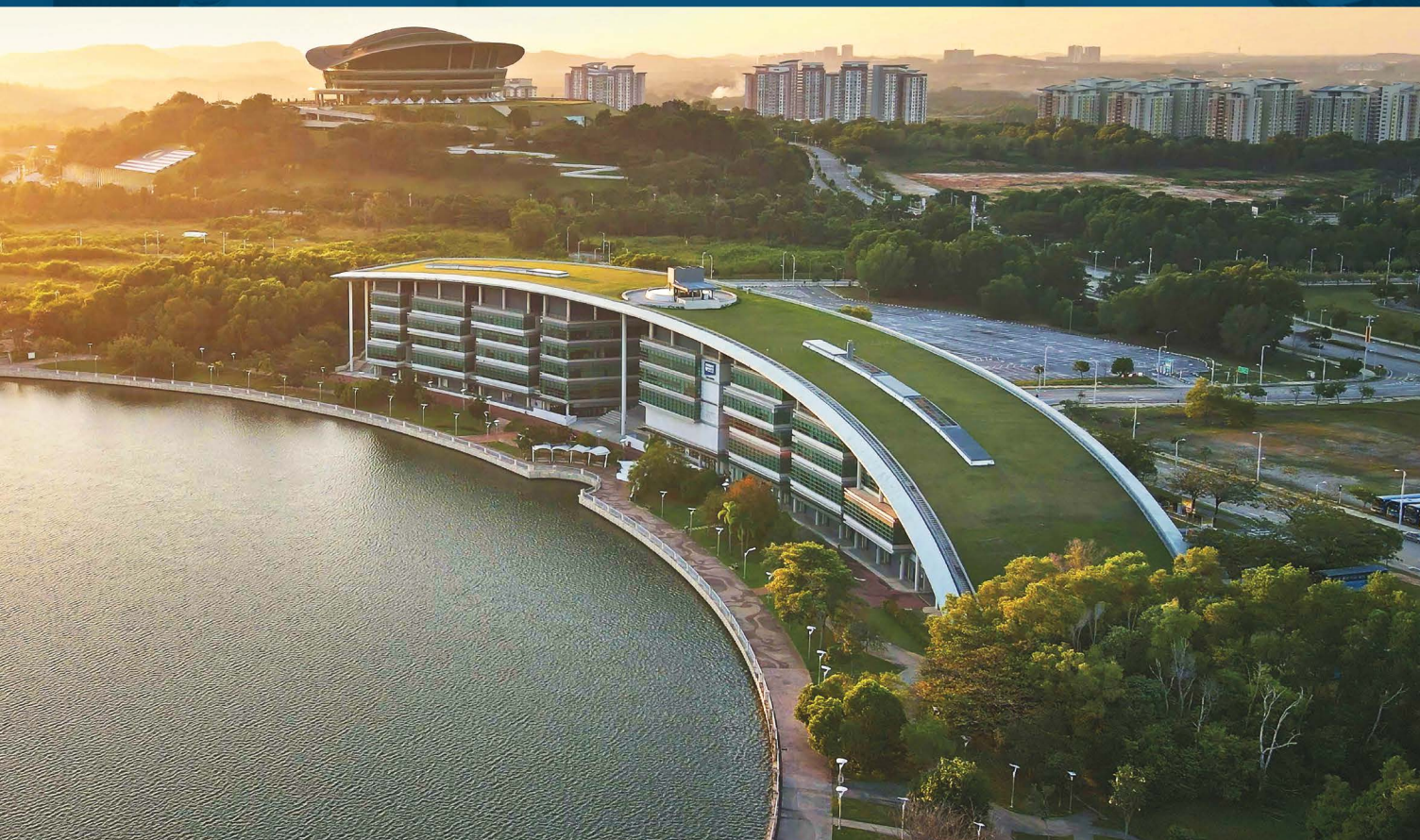




**HERIOT
WATT**
UNIVERSITY

Global
College

Foundation
Programme
2025



About Our Go Global

At Heriot-Watt University, the world is your classroom. Immerse yourself in a truly international learning experience with students from diverse backgrounds. Unlock the world's possibilities through our seamless inter-campus transfer programme to the **Edinburgh** or **Dubai campuses** and enjoy a **20% discount***.

** Subject to the degree programme running at your chosen campus.*

20%

tuition fee discount
when you transfer
to our **Edinburgh**
or **Dubai campuses**

99%

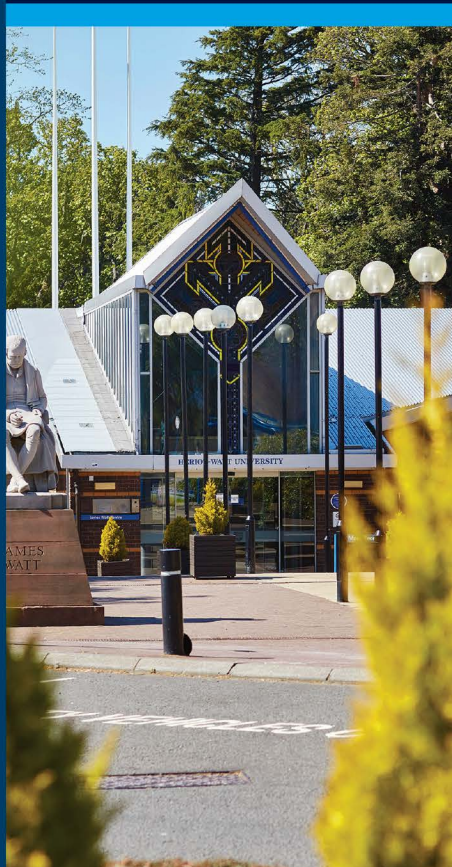
of **Go Global**
students said
they would
recommend it

Heriot-Watt University
Student Survey 2020

80%

of surveyed
employers actively
seek out graduates
with international
experience

QS Global Employer
Survey Report





Foundation Programme

INTAKES

January, April, July or September

DURATION

Full-time, 3 semesters

FEES

See website for details:
http://bit.ly/hwum_fees

PROGRAMME

Foundation in Science

KPT/JPS (R2/0011/3/0223) (MOA/FA3952) 07/30

Foundation in Business

KPT/JPS (R2/0410/3/0019) (MOA/FA4351) 03/29

Overview

- The Foundation Programme is a full-time three-semester programme of study, comprising of a combination of courses intended to prepare students who have completed appropriate national qualifications e.g. SPM, IGCSE or the equivalent level of studies. It is a programme of academic subjects, study skills and English language training designed to provide students with a direct pathway to their chosen degree at the University.

Learning Approach

- The Foundation Programme uses an innovative challenge-based learning approach to provide students with an enhanced and engaging learning experience. This approach enables students to develop independent learning skills that will ensure their success in their academic journey at the University.
- In **Foundation in Business**, you will be required to undertake **English** and **Economics** as the two mandatory courses and depending on your intended degree pathway, you will choose **two further courses** from the list below:
 - Accounting • Business Management
 - Computing • Mathematics • Psychology

- In **Foundation in Science**, you will be required to undertake three mandatory courses i.e. **English, Mathematics** and **Physics**. Depending on your intended degree pathway, you will choose **one further course** from the list below:
 - Computing • Chemistry • Psychology

Assessment

- You will be assessed regularly throughout the programme to ensure your learning is on track to meet the requirements for progressing to your chosen degree programme. Your attainment is monitored through a combination of continuous assessments and a final written examination.

Admissions Note

- Please note that progression to your chosen Undergraduate programme may require specific grade achievement in your Foundation Programme results and pre-requisite subjects with specific grades at the SPM / IGCSE / equivalent levels.

Foundation Pathways

Foundation In Business

There are 5 broad degree pathways that articulate to a wide range of degree programmes at Heriot-Watt University globally:

- Accounting and Finance
- Business
- Built Environment (Excluding Civil Engineering)
- Psychology
- Actuarial, Computing Science and Data Science

FOR ACCOUNTING AND FINANCE PATHWAY

Entry requirement:	5Cs in SPM / IGCSE or equivalent, in relevant subjects including English and Mathematics
Recommended course combination:	English, Economics, Accounting and Business Management

FOR BUSINESS PATHWAY

Entry requirement:	5Cs in SPM / IGCSE or equivalent, in relevant subjects including English and a pass in Mathematics
Recommended course combination:	English, Economics, Business Management and one further course (Accounting* or Psychology) <i>*A credit in SPM / IGCSE or equivalent in Mathematics is required for Accounting option. Please note that a pass in SPM / IGCSE or equivalent in Mathematics does not fulfill the entry requirement for BSc (Hons) in Psychology</i>

FOR BUILT ENVIRONMENT PATHWAY (EXCLUDING CIVIL ENGINEERING)

Entry requirement:	5Cs in SPM / IGCSE or equivalent, in relevant subjects including English and Mathematics
Recommended course combination:	English, Economics, Business Management and one further course (Accounting or Psychology)

FOR PSYCHOLOGY PATHWAY

Entry requirement:	5Cs in SPM / IGCSE or equivalent, in relevant subjects including English, Mathematics and Science
Recommended course combination:	English, Economics, Business Management and Psychology

FOR ACTUARIAL, COMPUTING SCIENCE AND DATA SCIENCE PATHWAY

Entry requirement:	5Cs in SPM / IGCSE or equivalent, in relevant subjects including English, Mathematics and Additional Mathematics
Recommended course combination:	English, Economics, Mathematics and one further course (Accounting or Computing*) <i>*Preferred courses for Data and Computing Sciences pathway</i>

What Choice Of Degree* Will I Have?

*Eligibility for your choice of degree programme is dependent on your chosen course combinations above and your final results of your Foundation Programme. The pre-requisite subjects with specific grade requirements at the SPM / IGCSE / equivalent levels (if required) must also be satisfied.

- | | |
|--|---|
| <ul style="list-style-type: none"> • MA (Hons) Accounting and Business Finance • BBA (Hons) Business Administration • MA (Hons) Business and Finance • MA (Hons) International Business Management • MA (Hons) Marketing • BSc (Hons) Psychology with Management | <ul style="list-style-type: none"> • BSc (Hons) Psychology • BSc (Hons) Quantity Surveying • BSc (Hons) Actuarial Science • BSc (Hons) Computing Science • BSc (Hons) Statistical Data Science • BSc (Hons) Information Systems with Data Analytics |
|--|---|

The above programmes are available at the Malaysia campus. You can take advantage of our unique Go Global transfer programme to study at our Edinburgh or Dubai campuses for at least one semester during your Undergraduate studies. It is also possible to transfer to more than one location over the course of your Undergraduate studies. You may also enter into degree programmes available only in UK and/or Dubai right after your Foundation studies. For these programmes, please refer to our website and speak to an Education Consultant should you have any further queries. However, direct entry to the UK and Dubai campuses is contingent upon agreed progression rules and entry requirements in place. Students are advised to consult with Student Life before planning for campus transfer.

Foundation Pathways

Foundation In Science

There are 6 broad degree pathways that articulate to a wide range of degree programmes at Heriot-Watt University globally:

- Engineering
- Actuarial, Computing Science and Data Science
- Built Environment
- Business
- Accounting and Finance
- Psychology

FOR ENGINEERING PATHWAY

Entry requirement:	5Cs in SPM / IGCSE or equivalent, in relevant subjects including English, Physics, Chemistry*, Mathematics and Additional Mathematics
Recommended course combination:	English, Mathematics, Physics and one further course (Computing or Chemistry*) <i>*required for Chemical Engineering</i>

FOR ACTUARIAL, COMPUTING SCIENCE AND DATA SCIENCE PATHWAY

Entry requirement:	5Cs in SPM / IGCSE or equivalent, in relevant subjects including English, Physics, Mathematics and Additional Mathematics
Recommended course combination:	English, Mathematics, Physics and Computing

FOR BUILT ENVIRONMENT PATHWAY

Entry requirement:	5Cs in SPM / IGCSE or equivalent, in relevant subjects including English, Physics and Mathematics
Recommended course combination:	English, Mathematics, Physics and one further course (Computing or Psychology)

FOR BUSINESS, ACCOUNTING AND FINANCE PATHWAY

Entry requirement:	5Cs in SPM / IGCSE or equivalent, in relevant subjects including English, Mathematics and Physics
Recommended course combination:	English, Mathematics, Physics and one further course (Computing or Psychology)

FOR PSYCHOLOGY PATHWAY

Entry requirement:	5Cs in SPM / IGCSE or equivalent, in relevant subjects including English, Mathematics and Physics
Recommended course combination:	English, Mathematics, Physics and Psychology

What Choice Of Degree* Will I Have?

*Eligibility for your choice of degree programme is dependent on your chosen course combinations above and your final results of your Foundation Programme. The pre-requisite subjects with specific grade requirements at the SPM / IGCSE / equivalent levels (if required) must also be satisfied.

- MEng Chemical Engineering
- MEng Electrical and Electronic Engineering
- MEng Mechanical Engineering
- MEng Civil Engineering
- BSc (Hons) Actuarial Science
- BSc (Hons) Computing Science
- BSc (Hons) Statistical Data Science
- BSc (Hons) Information Systems with Data Analytics
- MA (Hons) Accounting and Business Finance
- BBA (Hons) Business Administration
- MA (Hons) Business and Finance
- MA (Hons) International Business Management
- MA (Hons) Marketing
- BSc (Hons) Psychology with Management
- BSc (Hons) Psychology
- BSc (Hons) Quantity Surveying

The above programmes are available at the Malaysia campus. You can take advantage of our unique Go Global transfer programme to study at our Edinburgh or Dubai campuses for at least one semester during your Undergraduate studies. It is also possible to transfer to more than one location over the course of your Undergraduate studies. You may also enter into degree programmes available only in UK and/or Dubai right after your Foundation studies. For these programmes, please refer to our website and speak to an Education Consultant should you have any further queries. However, direct entry to the UK and Dubai campuses is contingent upon agreed progression rules and entry requirements in place. Students are advised to consult with Student Life before planning for campus transfer.

Transforming Our Youth

Realising the important role our young people play today, Heriot-Watt University Malaysia has developed specific programmes that are designed to support every student to realise their full potential.

Fit-For-Future

Students are encouraged to engage in a positive transformation by focusing on developing their emotional intelligence, creativity, understanding their own personalities, their strengths and weaknesses, and developing a long-term vision and mission. This is done by setting realistic **SMART goals** through engaging and interesting activities. Using a proven emotional intelligence framework, and engaging activities focusing on expressing positive emotions such as empathy and gratitude, students are taught self-awareness, self-management, social awareness and relationship management.

On completion of the programme, students will **develop a strong sense of self-confidence**, ability to **express their emotions in a positive way**, and be able to **relate comfortably to their peers** and better **manage their relationship with friends and family**, providing a smooth transition and preparing them for the challenges of University studies.

EmPOWER Programme

The **EmPOWER Programme** is a **4-level structured programme** anchored by **six developmental domains**. These are designed to deliver experiential learning opportunities that provide a lifelong foundation for building emotional intelligence, resilience, and happiness. We engage students in advanced personalised and self-driven developmental activities to give them a competitive advantage, enabling them to achieve their full potential when they graduate.

The first level, known as **Watt Level** of the EmPOWER Programme is compulsory for all students and will be offered in their first year of Undergraduate degree studies. Watt Level focuses on **Leading Self** and **Defining Impact** and is delivered through **POWER talk sessions** conducted by a panel of experienced POWER speakers. The other three levels (**Kilowatt**, **Megawatt** and **Gigawatt**) are achieved through a more personalised approach developed by students with their Personal Tutors.



“

I learned a lot about managing an online business in my group project, such as financial management techniques. I discovered that having a good relationship and understanding among team members are important to run a business successfully. Having different opinions and being open to them can lead to better ideas as well. As the group leader, I kept the group motivated and inspired with a positive attitude. I'm glad that our cake jars sold well in just 2 weeks! ”



AFRIN FARHANA

Foundation in Business |
MA (Hons) Accounting and
Business Finance

“

My foundation studies was enjoyable with various science experiments. I learned key interpersonal skills like video editing, report writing, referencing, and public speaking. Classes were engaging, especially Chemistry. The friendly dynamics between the lecturer and students transformed normal conversations into meaningful knowledge sharing. Never before had I experienced such joy while learning and I thank my Chemistry lecturer, who played a pivotal role in igniting my interest in Chemical Engineering. I am grateful for this wonderful experience and the lasting impact it has had on my future. ”



LIM RUI JING

Foundation in Science |
MEng Chemical Engineering

“

Exciting. Enriching. Eye-opening. These are what spring to mind upon reflection of my time as a Foundation in Business student at Heriot-Watt University Malaysia.

Though I did find myself initially stumbling and faltering over the steep learning curve that comes with transitioning from high school to university, I eventually found my footing through the support and guidance of some of the wonderful lecturers I had the privilege of being taught by.

The programme offered me the chance to step outside of what was comfortable and familiar, and take a leap of faith into the unknown. Suffice to say, I came out on the other side and made it to the finish line, all the better for it. ”



ASHLEY LYE ZE ERN

Foundation in Business |
MA (Hons) International
Business Management

“

The Foundation programme syllabus here at Heriot-Watt University Malaysia is challenging and extensive, yet immensely rewarding. It provides a rigorous academic framework that has significantly enhanced my knowledge across multiple disciplines. ”



DAVID LING

Foundation in Science |
BSc (Hons) Computing Science

HOW TO APPLY

Heriot-Watt
University
Malaysia accepts
applications all
year round.



Scan to Navigate
to Our Location

APPLY ONLINE

You can apply online for our programmes at <https://bit.ly/HWApply>. You must create an account to use the online application form. You don't have to complete the application in one session; you can save the information you have already entered and return to complete it at a later date. There is a help facility on each page of the online form.

SUPPORTING DOCUMENTS

Please remember to upload supporting documents so that we can make a decision on your application. This includes proof of English language proficiency and original or certified copies of academic transcripts.

Please refer to the supplemental item checklist on the Online Application form:

► <http://bit.ly/hwumaccount>

See website for details of fees:

► http://bit.ly/hwum_fees




Follow Us

-  /hwumalaysia
-  @hwumalaysia
-  /@HeriotWattUniversityMalaysia
-  heriotwattmalaysia
-  heriot-watt university malaysia

www.hw.edu.my

Open for consultation:
Weekdays 9am - 5pm
Weekends by appointment

Heriot-Watt University Malaysia (DULN007(WP))
No. 1, Jalan Venna P5/2, Precinct 5, 62200 Putrajaya, Malaysia

 +603-8894 3888  +6012-651 2599  HWUM@hw.ac.uk



As of January 2025