

EmPOWER PROGRAMME

The Empower Programme is a 4-level structured programme that is aimed at future-proofing our graduates, to unleash their potential and to prepare them to stand out and have an impact in a highly uncertain world. As students go through the programme, they accumulate Watts. Students will have a transcript that will document their developmental journey. The first level (Watt level), where students may accumulate up to 999 Watts, is delivered through a course that is aimed at “Self Leadership” and “Defining Impact”. The other three levels are achieved through a more personalised approach where different students will work with their personal tutors.

Empower Programme has the following 6 developmental domains:

Global Citizenship, Leadership & Impact



This is cultivated through meaningful global experiences that will result in the development of a global perspective as well as the honing of the individual's leadership style.

Employability & Industrial Relevance



Students will study in an industry relevant environment that will enhance their experience and employability potential.

Entrepreneurship, Innovation & Creativity



The creativity, innovation and entrepreneurial potential of the students will be developed through practical and impactful exercises.

People Skills



Students will develop people skills that will enable them to remain effective, connected and relevant. This includes the cultivation of social capital and economic capital.

Critical Thinking & Decision Making



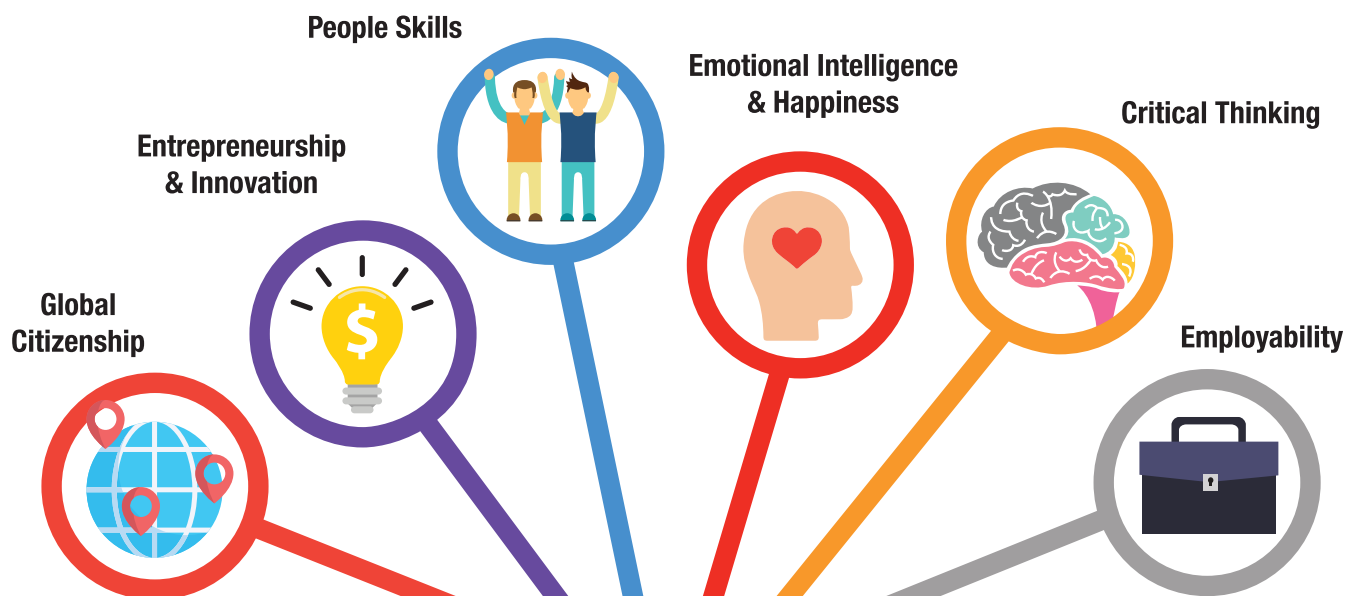
Students will learn how the brain works and use that to build critical mental habits that will enable them to think critically and make decisions effectively.

Emotional Intelligence, Resilience & Happiness



Students will enhance their emotional intelligence and develop resilience and happiness while engaging in an active and healthy lifestyle.





Gigawatt

Leading Enterprises
Global Impact
Raising Funds
Creating Jobs

This level will help inculcate holistic and systematic thinking capabilities. Students at this level will be able to have an impact on industry practices and create jobs or raise funds through their own businesses or social entrepreneurial ventures.

Megawatt

Leading Communities
Widening Impact
Volunteering
Global Work Opportunity

At this level, students will aspire to impact communities – raise awareness of global challenges, volunteer for a cause, and enhance their social and economic capital.

Kilowatt

Leading Teams
Influencing Others
Developing Others

At this level, students will hone their appreciation for team dynamics, practise their relationship management skills through developing others, and leading projects, events and campus extra-curricular activities. These will enhance their people skills in navigating differing value perspectives.

Watt

Leading Self
Defining Impact
Community Project

This level focuses on enhancing emotional intelligence; developing positive personal qualities such as resilience, happiness, self-awareness and self-motivation; leadership style awareness; and developing a personal impact statement. Students will work in teams on a community project related to their impact statement, and also create SMART goals and a personal development Plan. This Watt level is delivered via experiential learning and assessed through a credit-bearing course guiding student' progress to the kilowatt level.