

VPN User Guide: Own Device

Student: Malaysia Campus

Own PC/laptop: Windows.....	2
Pre-Configurations required before logging into VPN	2
JAVA Configuration Settings	2
Using the VPN	2
Logging in	2
Navigating your files	3
Other links, tips and help	4
Log out	4
Own PC/laptop: Mac.....	5
Pre-Configurations required before logging into VPN	5
JAVA Configuration Settings	5
Creating a Folder for VPN access – MAC Users.....	5
Using the VPN	6
Logging in	6
Navigating your files	7
Other links, tips and help	9
Log out	9

Own PC/laptop: Windows

These instructions tell you how to setup and install the software required to connect your own/home PC or laptop to the Heriot-Watt (Malaysia) VPN

Browser choice is important - use either **Internet Explorer (IE)** or **Firefox**

- Do not use Windows 10 Edge Browser or Chrome

Pre-Configurations required before logging into VPN

JAVA Configuration Settings

You must be running the most recent version of JAVA on your home PC

You can download [JAVA](http://www.java.com/en/download) here (<http://www.java.com/en/download>)

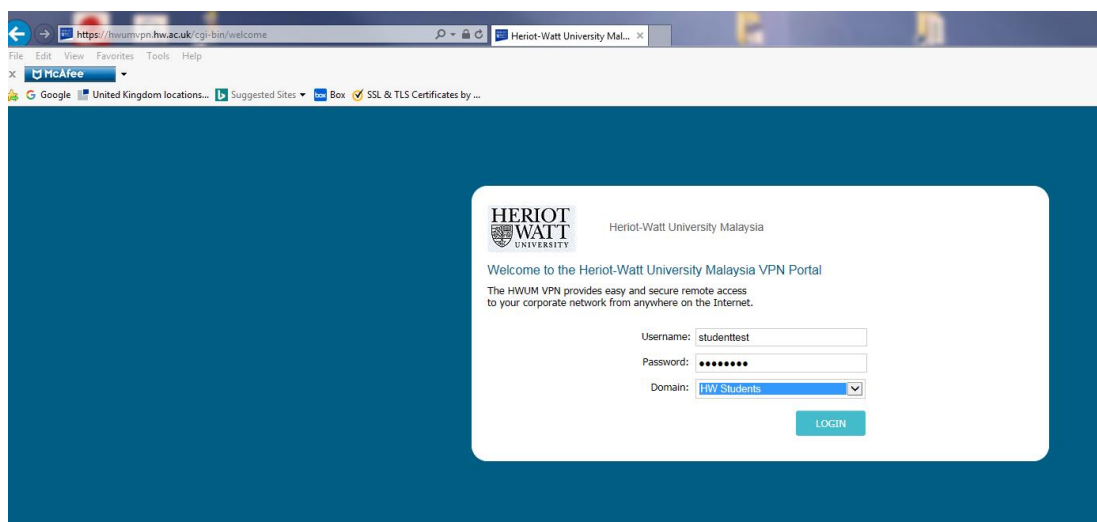
Edit your JAVA security settings

1. Go to the **Java Control Panel** (Open System preferences – then open Java)
2. Select the **Security** tab
3. Click Edit Site List
4. Click **ADD**
5. Type **https://hwumvpn.hw.ac.uk** in the new row
6. Click **OK**

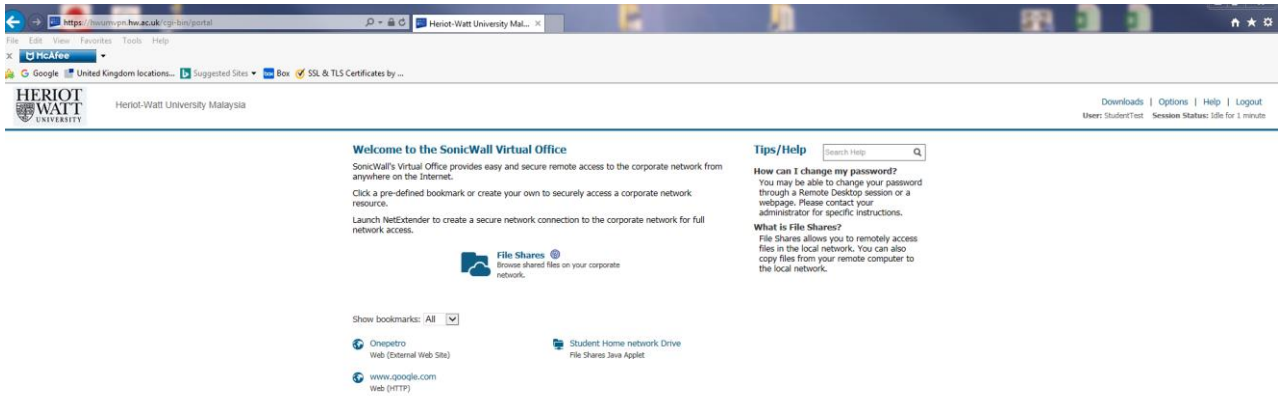
Using the VPN

Logging in

1. Open a browser and enter <https://hwumvpn.hw.ac.uk>
2. Enter your HW **username** and **Password**
3. Select **HW Students** from the drop down box
4. Click on **Login**



- You will now be logged into the VPN and should similar links as the diagram

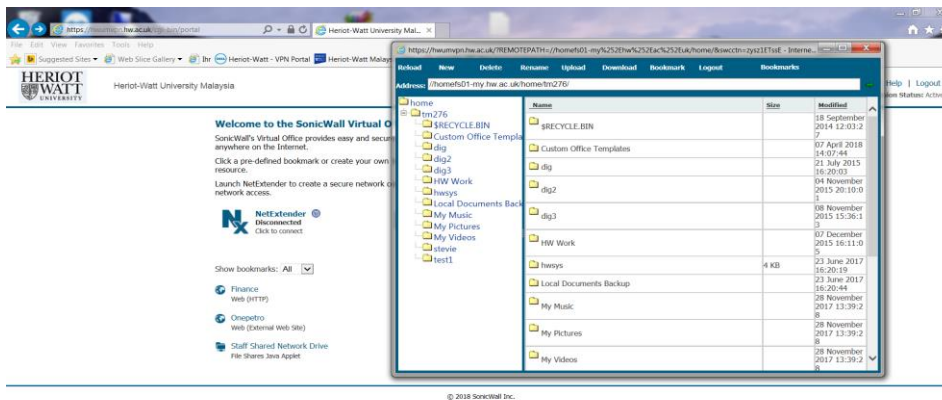


Navigating your files

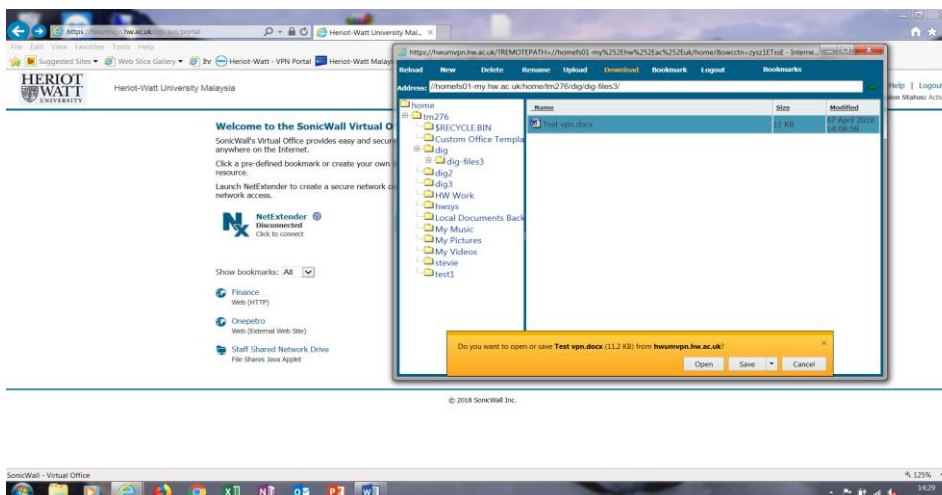
1. Click **Student Home Network Drive**

- You will see the pop-up window showing the file layout

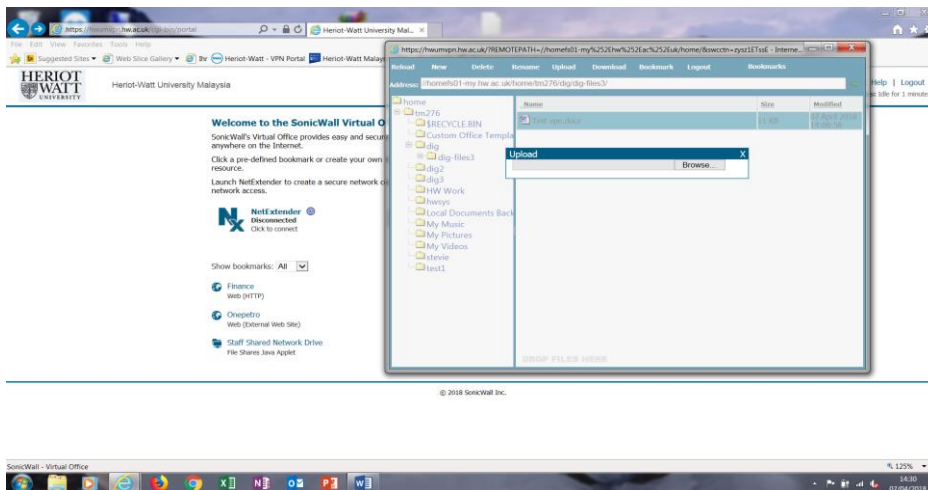
Search and locate the file that you require



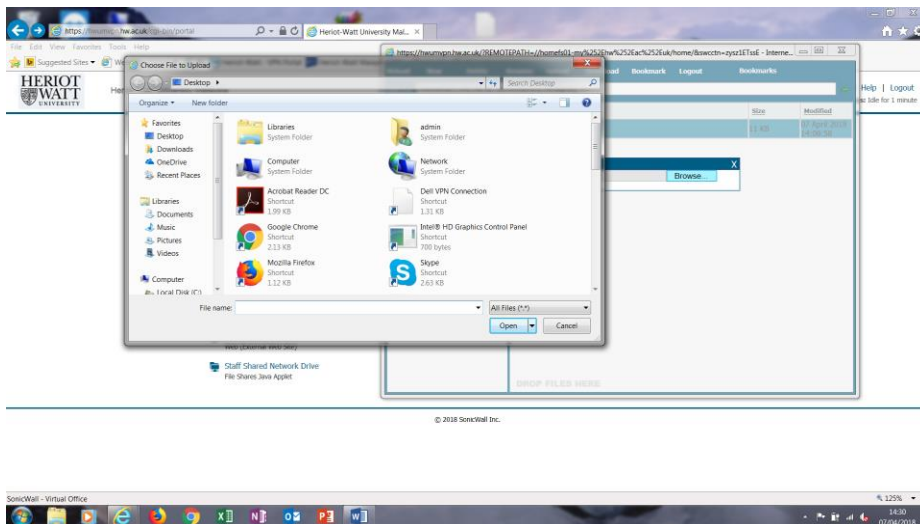
- Once file is located, highlight the file and click download



- Once you have finished editing the file that you downloaded, click upload



- Locate the file that you were editing, click open and file will start to upload.



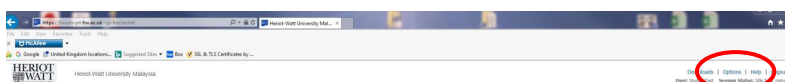
Other links, tips and help

The other links to the HW web and to Vision are on the VPN as quick short cuts while logged into the VPN.

You do not need to login to the VPN, you can go directly to these web sites via a browser.

Log out

- Click Logout to close VPN connection



Own PC/laptop: Mac

Follow these instructions on how to setup and install the software required to connect to the Heriot-Watt Edinburgh VPN.

Pre-Configurations required before logging into VPN

JAVA Configuration Settings

You must be running the most recent version of JAVA

You can download **JAVA** here (<http://www.java.com/en/download>)

Edit your JAVA security settings

1. Go to the **Java Control Panel** (System Preferences, Java)
2. Select the **Security** tab
3. Click **Edit Site List**
4. Click **ADD**
5. Type **https://hwumvpn.hw.ac.uk** in the new row
6. Click **OK**

Creating a Folder for VPN access – MAC Users

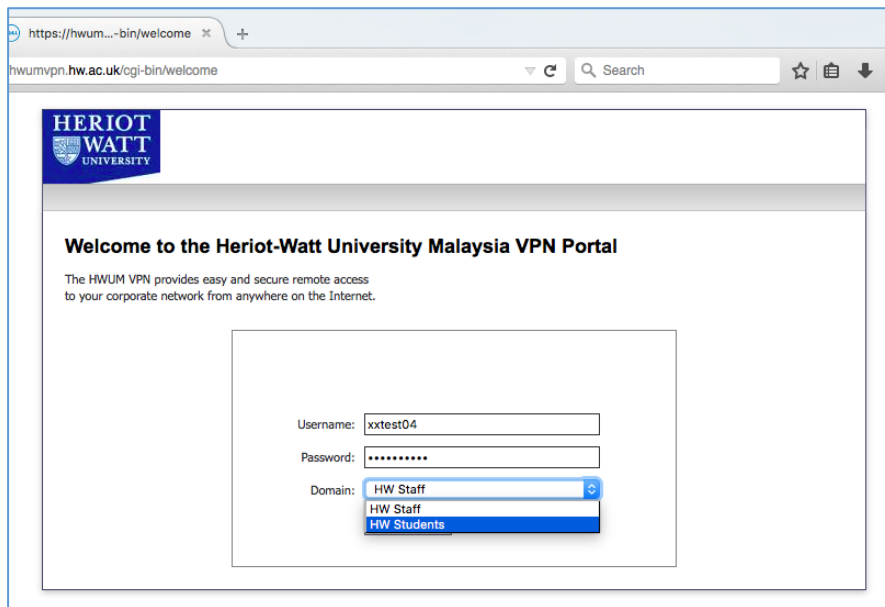
- Create a new folder called **HW WORK** in **Documents** on your MAC.

This will allow you to access the folder created from your MAC when you connect via the VPN, allowing you to easily drag and drop files from your HW student home drive to your home MAC PC.

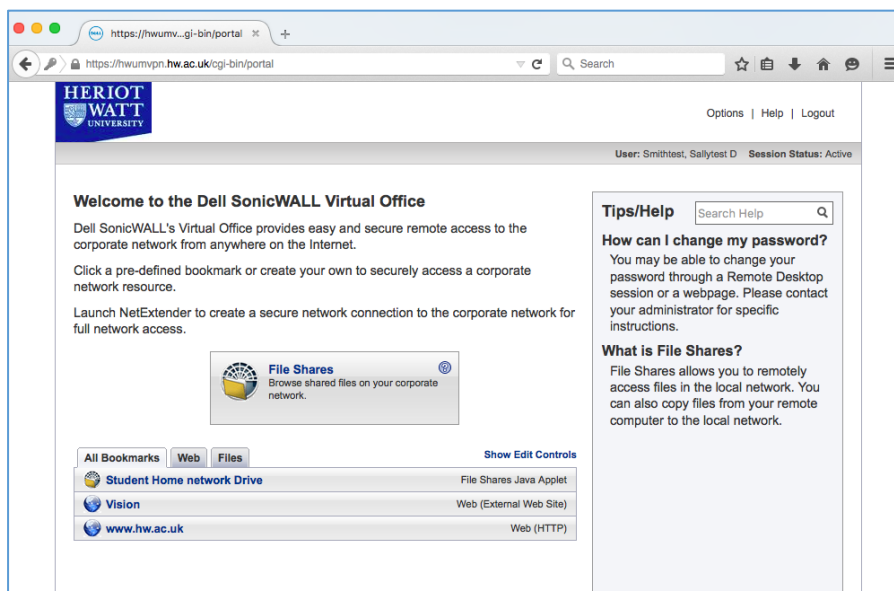
Using the VPN

Logging in

1. Open a browser (Firefox preferred) and go to <https://hwumvpn.hw.ac.uk>
2. Enter your HWU **Username** and **Password**
3. Select HW Students from the drop down box
4. Click **Login**



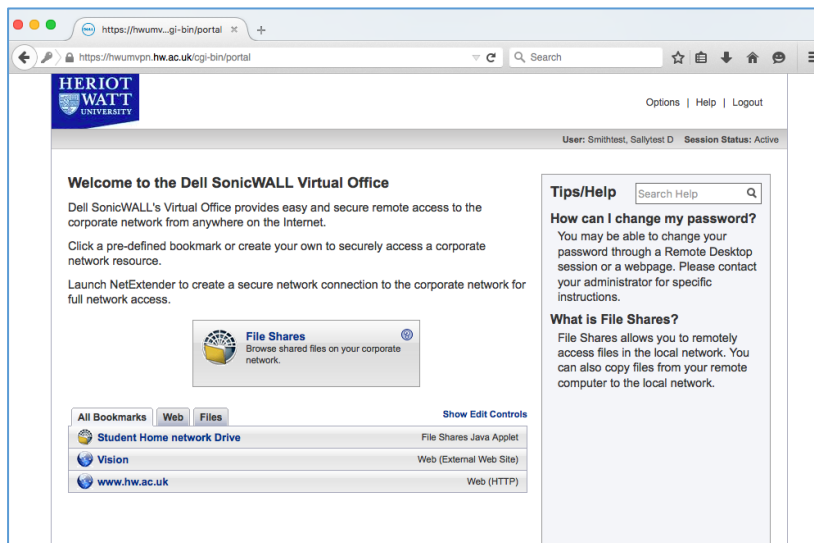
You will now be logged into the VPN and should see links as the diagram



Navigating your files

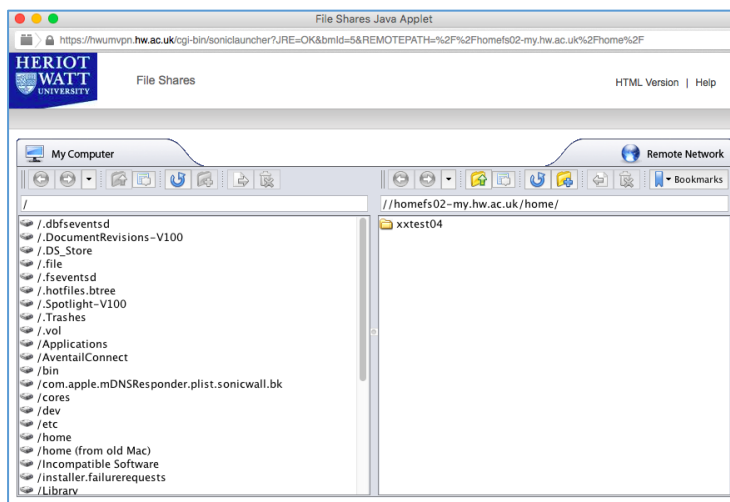
1. Click **Student Home Network Drive**

- You maybe prompted by JAVA, please check the box and click either **Run** or **Allow**.

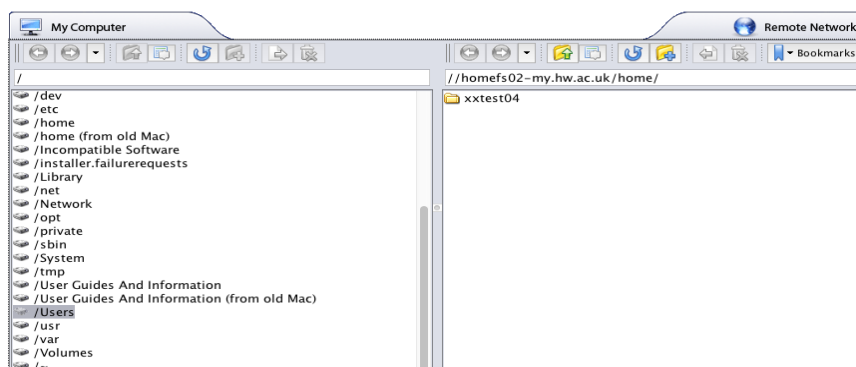


In the window displayed you can see

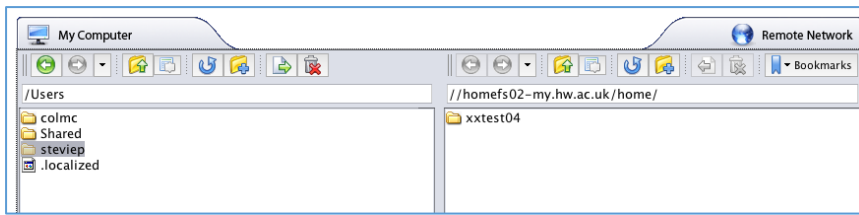
- Left panel – your local MAC Folders
- Right panel – your HW home (H:) drive



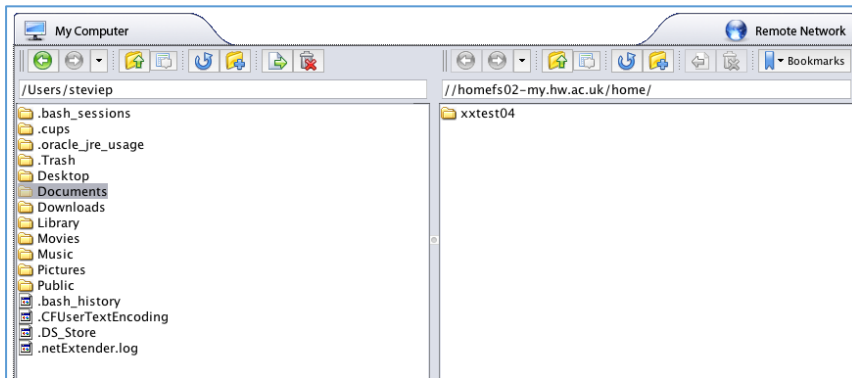
2. Scroll down the contents in the left-hand panel (if necessary) and select **/Users**



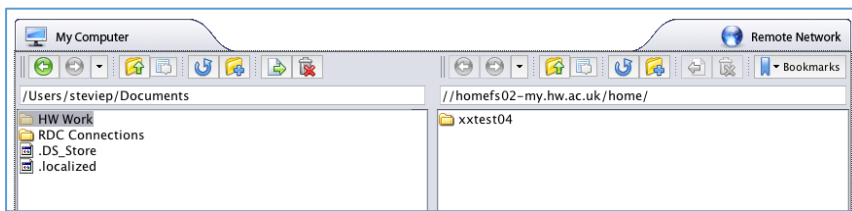
3. Open the **Username** folder e.g. Home or steviep



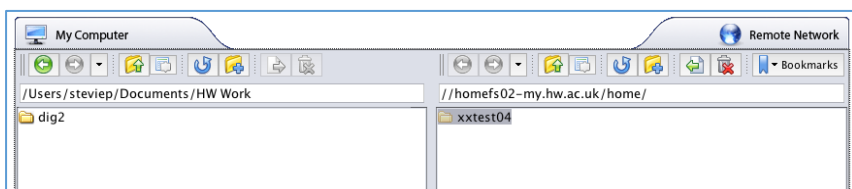
4. Open **Documents** folder



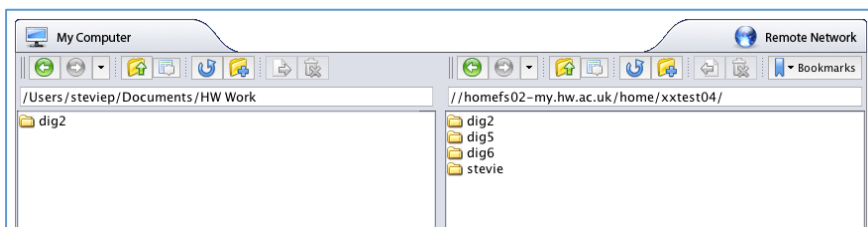
5. Open **HW Work** folder (this is the Folder that you created before logging into the VPN)



6. In the right panel – open your username folder



- You can now drag and drop files from your Mac to your HW Home drive or vice-versa



Other links, tips and help

The other links to the HW web and to Vision are on the VPN as quick short cuts while logged into the VPN.

You do not need to login to the VPN, you can go directly to these web sites via a browser.

Log out

- Click Logout to close VPN connection

