

Remote Desktop: Apple (all devices)

Install the App

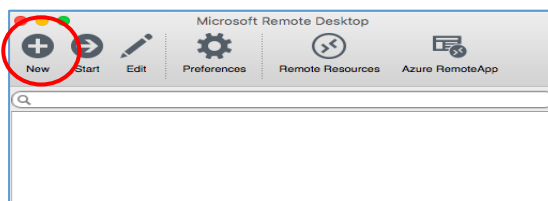
- Download the **Microsoft Remote Desktop** App from the Apple store

Configure your device

1. Open the App



2. Click on **New**

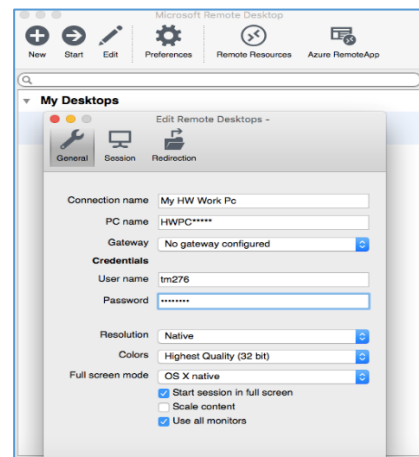


3. Fill in the Details required

- Connection name e.g. **My HW Work PC**
- PC name e.g. **HWPC12345**
- User name e.g. **abc123**
- Your HWU **Password**

4. Close the dialog box - click **X**

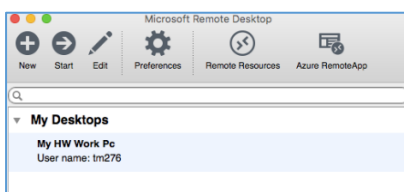
- Your **Remote Desktop client** is now configured.



You must **connect to the VPN** before you start a Remote Desktop connection
(see *VPN User Guide: Own Device (Mac, iPad & Android)*)

Start a Remote Desktop session

1. Double click the **Microsoft Remote Desktop** App – the connection details will be displayed
2. Double click on the connection i.e. **My HW Work PC**



You should now be connected by Remote Desktop to your PC at work.

Exit the Remote Desktop session

1. Go to **Start**
2. Click the **arrow** next to **Shut down**
3. Click on **Disconnect**

Remember to disconnect from the VPN once you are finished
(see *VPN User Guide: Own Device (Mac, iPad & Android)*)